



# AIRCHARGER™

## HIGH-FLOW INTAKE KITS

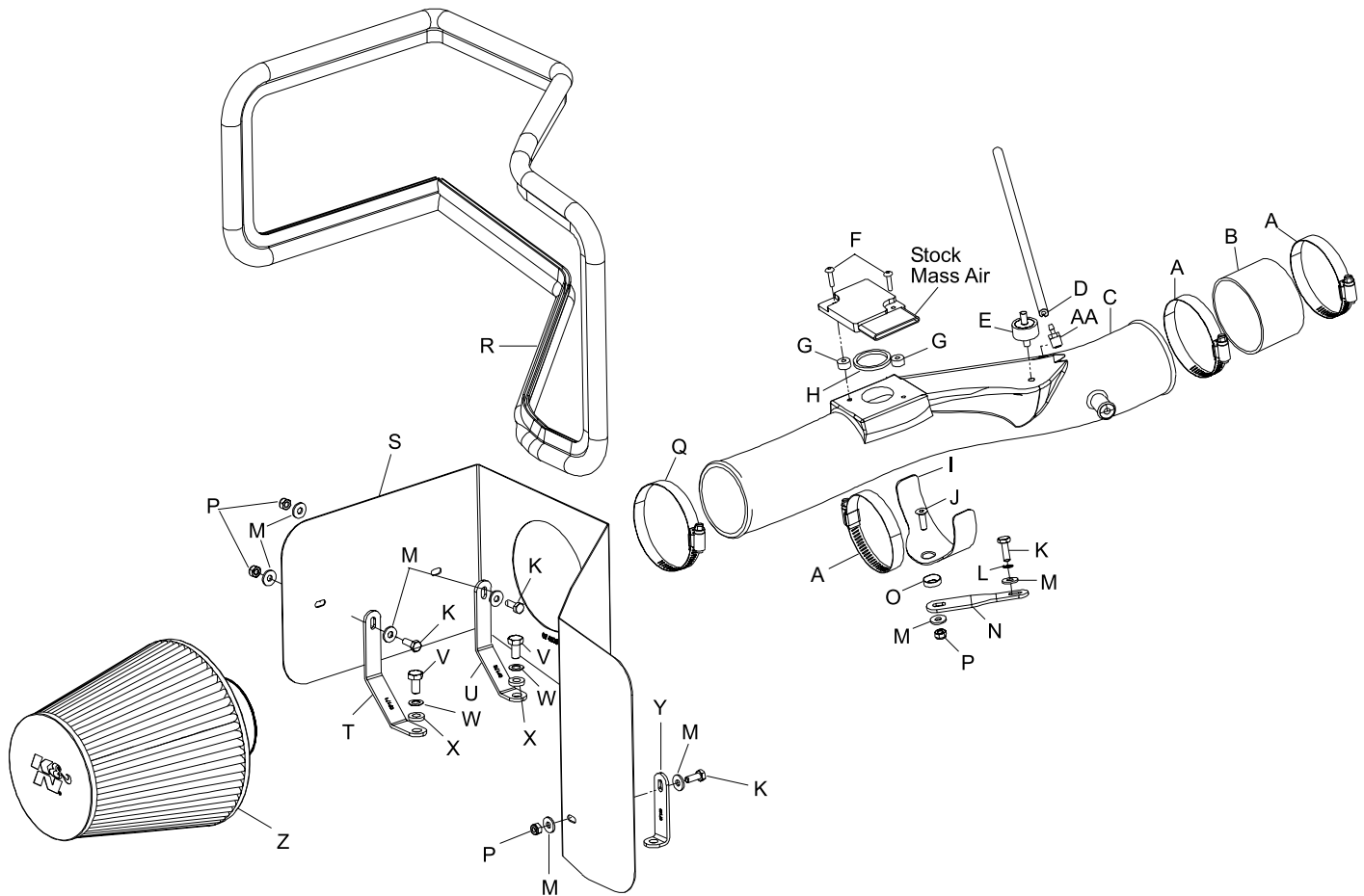
### INSTALLATION INSTRUCTIONS

**63-9023**  
**TOYOTA**  
**2003-08 4RUNNER**  
**V6-4.0L**

**NOTE:** This kit was not designed to fit vehicles with a body lift.

**TOOLS NEEDED:**

- Phillips Screwdriver
- Flat Blade Screwdriver
- Ratchet
- Extension
- 10mm Socket
- 12mm Socket
- 13mm Socket
- 10mm Wrench
- Pliers
- 2.5mm Allen
- 4mm Allen



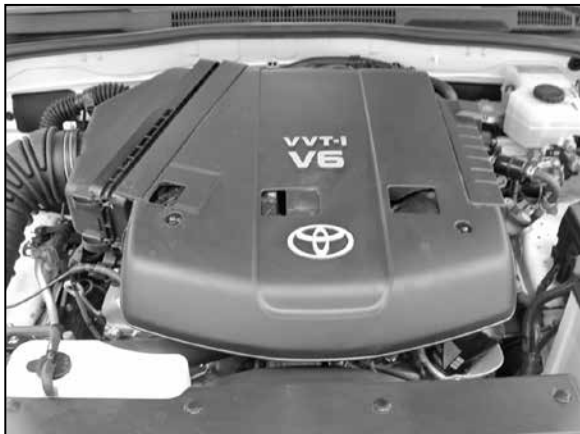
**PARTS LIST:**

| Description                     | Qty. | Part # | Description                     | Qty. | Part # | Description                         | Qty. | Part #  |
|---------------------------------|------|--------|---------------------------------|------|--------|-------------------------------------|------|---------|
| A hose clamp #48                | 3    | 08601  | K bolt 6mm-1.00x16mm            | 4    | 07703  | U bracket, med "L"                  | 1    | 07172   |
| B silicone hose; 3.0" id x 2.0" | 1    | 08434  | L 1/4" split lock washer        | 1    | 08198  | V bolt 8mm x 1.25 x 16mm            | 2    | 07844   |
| C intake tube (DD)              | 1    | 087099 | M washer flat 1/4" id x 5/8" od | 8    | 08275  | W washer wave 8mm                   | 2    | 08239   |
| D silicone hose; 4mm x 18"L     | 1    | 08153  | N bracket                       | 1    | 07179  | X washer 5/16" id x 5/8" od flat    | 2    | 08276   |
| E rubber stud m6-1.00m/m        | 1    | 07027  | O washer; black nylon           | 1    | 08180  | Y bracket "L"                       | 1    | 07158   |
| F button head allen m4-.7x16mm  | 2    | 07793  | P nut 6mm nylock                | 4    | 07553  | Z air filter                        | 1    | RC-5100 |
| G spacer, mass air sensor       | 2    | 06531  | Q hose clamp #52                | 1    | 08610  | AA vent; strt, 3/16 barbed 1/4" not | 1    | 080021  |
| H gasket, mass air sensor       | 1    | 09013  | R edge trim 83"L                | 1    | 102503 |                                     |      |         |
| I saddle bracket                | 1    | 078855 | S heat shield                   | 1    | 074005 |                                     |      |         |
| J bolt 6mm f/h/a                | 1    | 08376  | T bracket, long "L"             | 1    | 07171  |                                     |      |         |

**NOTE: FAILURE TO FOLLOW INSTALLATION INSTRUCTIONS AND NOT USING THE PROVIDED HARDWARE MAY DAMAGE THE INTAKE TUBE, THROTTLE BODY AND ENGINE.**

**TO START:**

1. Turn off the ignition and disconnect the negative battery cable.  
**NOTE: Disconnecting the negative battery cable erases pre-programmed electronic memories. Write down all memory settings before disconnecting the negative battery cable. Some radios will require an anti-theft code to be entered after the battery is reconnected. The anti-theft code is typically supplied with your owner's manual. In the event your vehicles' anti-theft code cannot be recovered, contact an authorized dealership to obtain your vehicles anti-theft code.**



2. Loosen the two nuts that secure the engine cover, then remove the engine cover



3. Loosen the hose clamps at the air box and resonator.



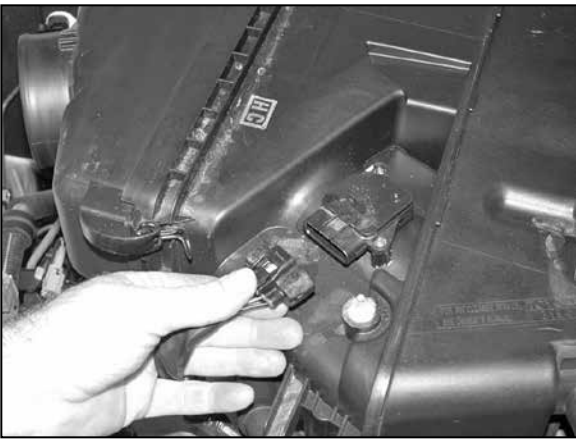
4. Pull wire harness clip up to release from intake tube.



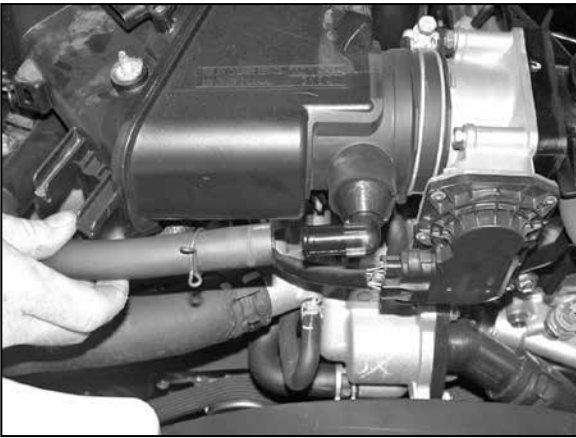
5. Remove intake tube from vehicle as shown.



6. Remove two bolts that secure resonator to inner fender, then remove resonator from vehicle as shown.



7. Disconnect the two mass air wire harness retaining clips from air box, then disconnect the mass air sensor electrical connection.



8. Remove crank case vent hose from air box as shown.



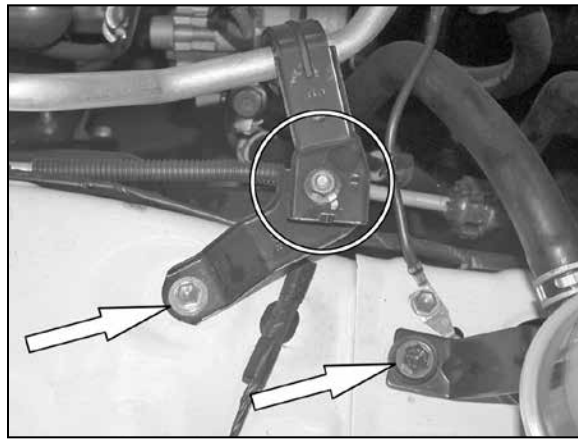
9. Remove fuel pressure regulator hose from back side of air box.



10. Loosen the hose clamp at throttle body, then remove the two bolts that secure air box to engine.



11. Remove air box assembly from engine as shown.



12. On vehicles equipped with the A/C mounting bracket, remove the A/C mounting bracket and loosen the nut. Then, remove the power steering reservoir mounting bolt.

**NOTE: The power steering reservoir bolt will be re-used.**



13. Rotate the A/C mounting bracket onto the power steering reservoir, then secure it using the bolt from the previous step. Tighten the A/C mounting nut.



14. Remove the 12mm bolt that retains the power steering reserve to vehicle, then mount the provided bracket (07158) onto the vehicle with the bolt that was removed.



15. Mount the two provided brackets onto the vehicle with the provided hardware.

**NOTE: Bracket (07172) mounts closest to engine.**



16. Install the edge trim onto the heat shield as shown. Trim if needed.



17. Install the heat shield onto the vehicle, then secure to brackets with the provided hardware.



18. Assemble the saddle bracket assembly with the provided hardware as shown.



19. Remove crank case vent hose from valve cover.



20. Install the saddle bracket assembly onto the threaded boss on the cam cover with the provided hardware as shown.



21. Install the provided silicone hose (08434) onto throttle body with the provided hose clamp as shown.



22. Remove the two screws that secure the mass air sensor to the air box assembly, then remove the mass air sensor as shown.



23. Apply the gasket to the mass air sensor, sticky side down as shown.



24. Secure the mass air sensor to the K&N® intake tube using the provided screws and spacers as shown.



25. Install the vent fitting onto the K&N® intake tube as shown.

**NOTE: Plastic NPT fittings are easy to cross thread. Install the vent fitting "hand" tight, then turn it two complete turns with a wrench.**



26. Install rubber mounted stud onto K&N® intake tube as shown.



27. Install the K&N® intake tube onto the throttle body and align with the saddle bracket.



28. Secure the K&N® intake tube to the saddle bracket with the provided hose clamps also tighten the hose clamp at the throttle body.



29. Remove the stock vacuum hose from fuel pressure regulator, then install provided silicone hose to fuel pressure regulator and then onto the K&N® intake tube.



30. Fuel pressure regulator and then onto the K&N® intake tube. Install the original crank case vent hose onto the valve cover, then connect the crank case vent hose onto the K&N® intake tube.

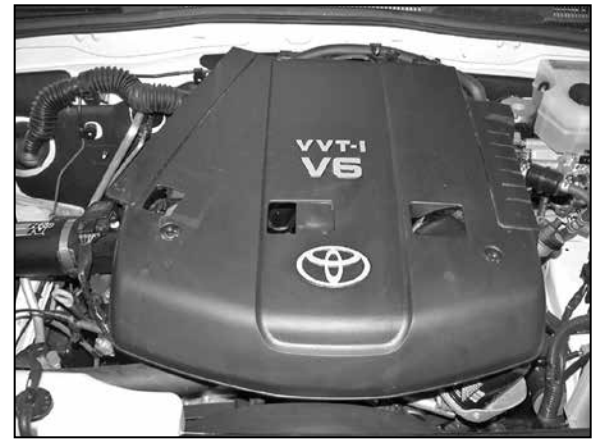


31. Install the K&N® Air filter onto the intake tube as shown.

**NOTE: Drycharger® air filter wrap; part # RC-5100DK is available to purchase separately.**



32. Reconnect the mass air sensor electrical connections.



33. Re-install the engine cover using the original nuts removed in step #1.



34. Reconnect the vehicle's negative battery cable. Double check to make sure everything is tight and properly positioned before starting the vehicle.

35. It will be necessary for all K&N® high flow intake systems to be checked periodically for realignment, clearance and tightening of all connections. Failure to follow the above instructions or proper maintenance may void warranty.

#### ROAD TESTING:

1. Start the engine with the transmission in neutral or park, and the parking brake engaged. Listen for air leaks or odd noises. For air leaks secure hoses and connections. For odd noises, find cause and repair before proceeding. This kit will function identically to the factory system except for being louder and much more responsive.

2. Test drive the vehicle. Listen for odd noises or rattles and fix as necessary.

3. If road test is fine, you can now enjoy the added power and performance from your kit.

4. K&N Engineering, Inc., requires cleaning the intake system's air filter element every 100,000 miles. When used in dusty or off-road environments, our filters will require cleaning more often. We recommend that you visually inspect your filter once every 25,000 miles to determine if the screen is still visible. When the screen is no longer visible some place on the filter element, it is time to clean it. To clean and re-oil, purchase our filter Recharger® service kit, part number 99-5050 or 99-5000 and follow the easy instructions.