



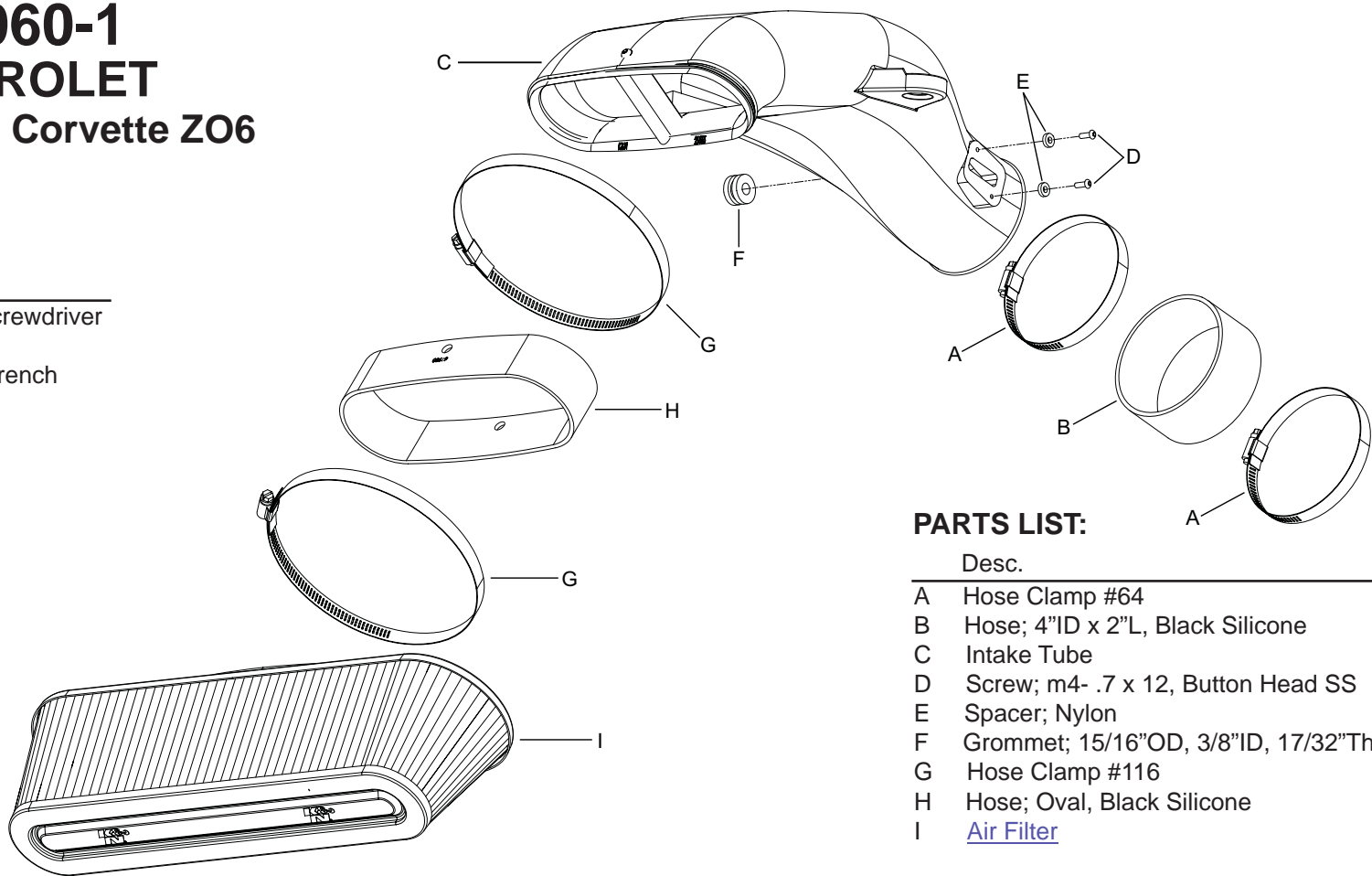
AIRCHARGER® HIGH-FLOW INTAKE KITS

INSTALLATION INSTRUCTIONS

63-3060-1
CHEVROLET
2006-09 Corvette ZO6
V8-7.0L

TOOLS:

- Flat Blade Screwdriver
- 2.5mm Allen
- T20P Torx Wrench



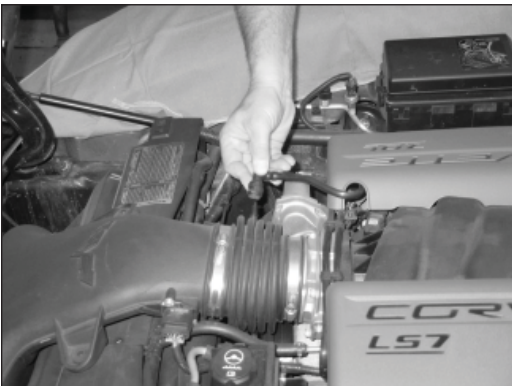
PARTS LIST:

Desc.	Qty.	Part #
A Hose Clamp #64	2	08648
B Hose; 4"ID x 2"L, Black Silicone	1	08761
C Intake Tube	1	087197-1
D Screw; m4- .7 x 12, Button Head SS	2	07726
E Spacer; Nylon	2	06503
F Grommet; 15/16"OD, 3/8"ID, 17/32"Thk.	1	08100
G Hose Clamp #116	2	08647
H Hose; Oval, Black Silicone	1	08619
I Air Filter	1	RP-5161

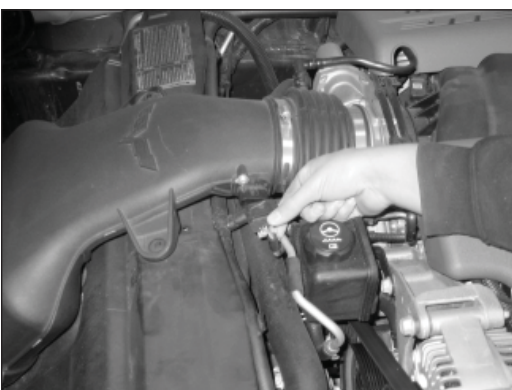
NOTE: FAILURE TO FOLLOW INSTALLATION INSTRUCTIONS AND NOT USING THE PROVIDED HARDWARE MAY DAMAGE THE INTAKE TUBE, THROTTLE BODY AND ENGINE.

TO START:

1. Turn off the ignition and disconnect the negative battery.



2. Unlock and disconnect the crank case vent hose from the intake tube as shown.



3. Disconnect the mass air sensor electrical connection.



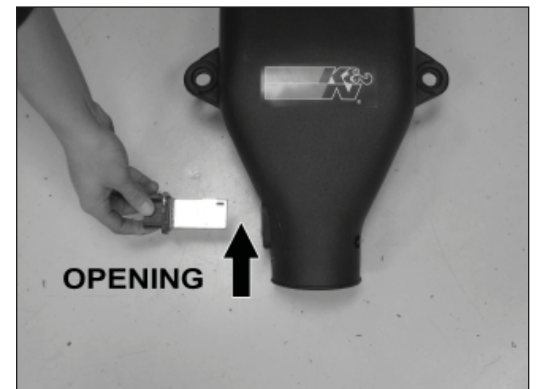
4. Loosen the hose clamp that secures the intake tube to the engine throttle body.



5. Pull the intake tube off of the throttle body and dislodge the intake tube from the mounting pins on the radiator cover. Then remove the complete intake assembly from the vehicle.
NOTE: K&N recommends that customers do not discard factory air intake.



6. Remove the two screws which secure the mass air sensor in the stock intake tube and then remove the sensor as shown.



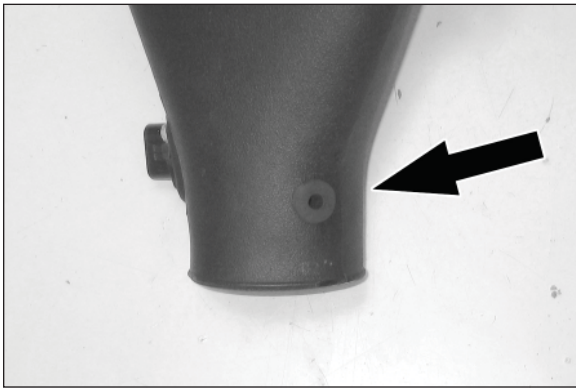
7. Install the mass air sensor into the K&N Intake Tube as shown.
NOTE: The opening in the mass air sensor should be toward the filter end of the tube as shown.



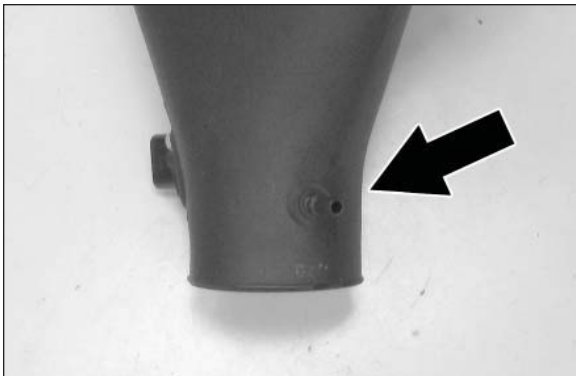
8. Secure the mass air sensor to the K&N Intake Tube with the screws and spacers provided.



9. Remove the crank case vent fitting from the stock intake tube as shown.



10. Install the provided grommet into the K&N Intake Tube as shown.



11. Install the crank case vent fitting removed in step #9 into the grommet installed into the K&N Intake Tube during step #9 as shown.



12. Remove the two mounting grommets shown from the stock intake tube.



13. Install the mounting grommets removed in step #11 into the K&N Intake Tube mounting holes.

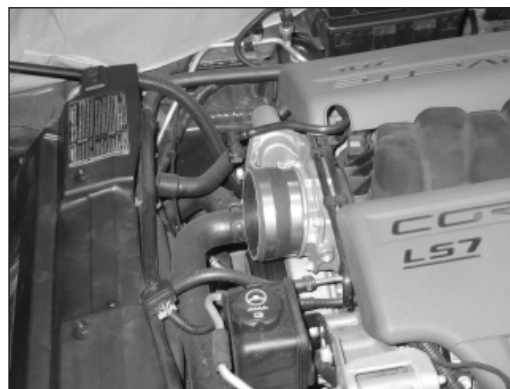


14. Install the supplied silicone hose (08619) onto the K&N Intake Tube and secure with the supplied hose clamp. **NOTE: Be sure to place the notches in the silicone hose over the air diverter mounting bolts.**

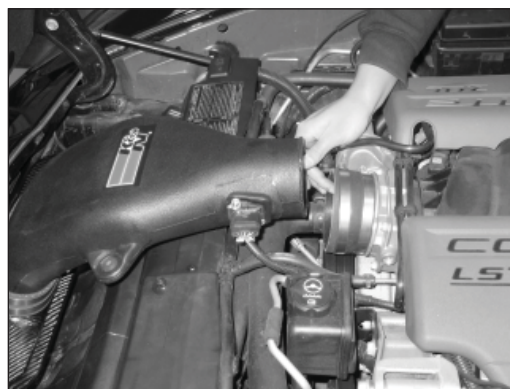


15. Install the K&N Air Filter into the silicone hose installed on the K&N Intake Tube as shown and secure with the provided hose clamp.

NOTE: The silicone hose on the K&N Air Filter and intake tube is designed to be a very tight fit, Use care while installing the filter onto the intake tube.



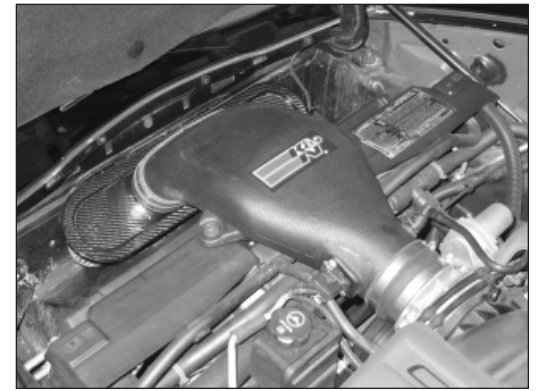
16. Install the silicone hose (08761) onto the throttle body and secure with the provided hose clamp.



17. Install the K&N intake assembly into position and connect the mass air sensor electrical connection.



18. Install the K&N intake assembly onto the mounting pins and into the silicone hose at the throttle body and secure with the provided hose clamp and then reconnect the crank case vent hose.



19. Reconnect the vehicles negative battery cable. Double check to make sure everything is tight and properly positioned before starting the vehicle.

20. It will be necessary for all K&N intake kits to be checked periodically for realignment, clearance and tightening of all connections. Failure to follow the above instructions or proper maintenance may void warranty.

ROAD TESTING:

1. Start the engine with the transmission in neutral or park, and the parking brake engaged. Listen for air leaks or odd noises. For air leaks secure hoses and connections. For odd noises, find cause and repair before proceeding. This kit will function identically to the factory system except for being louder and much more responsive.

2. Test drive the vehicle. Listen for odd noises or rattles and fix as necessary.

3. If road test is fine, you can now enjoy the added power and performance from your kit.

4. K&N suggests checking the air filter element periodically for excessive dirt build-up. When the element becomes covered in dirt (or once a year), service it according to the instructions on the Recharger service kit, part number 99-5000 or 99-5050.