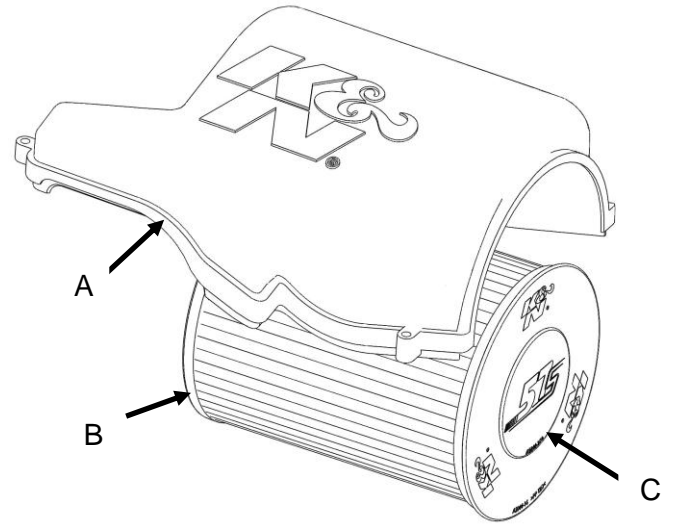


Ford Focus II /C-Max 1.4i, 1.6i, 1.8i, 2.0i, 1.6d, 1.8d, 2.0d, 2.5RS
Ford Focus III/ (Grande) C-Max II 1.0i, 1.6i, 2.0i, 1.6d, 2.0d
Ford Kuga 2.0d
Volvo C30/S40/V50 1.6i, 1.8i, 2.0i, 1.6d, 2.0d,
Volvo V70 1.6d, Volvo C70 II 2.0d Mazda 3/5 1.6d

Tools needed for installation:

Flat blade screwdriver
 7mm Socket spanner

Description	
A	Air box Lid A2091-36
B	Air filter
C	Air filter end cap



Instruction sheet A2054-766

1. Remove the 4 screws from the original air box lid. (Fig. 1)
2. Remove the original air box lid from the air box base. (Fig. 2)
3. Remove the original air filter from the air box base. (Fig. 3)
4. Fit the new K&N air filter into the original air box base. Make sure the filter neck is correctly positioned onto the intake snorkel. (Fig. 4&5)
5. Fit the new K&N air box lid onto the air box base using the 4 original screws (max 5Nm). (Fig. 6)
6. Carry out a final check of all the connections and alignment of the K&N air filter system before starting the engine. Installation is now complete.
7. It is possible to remove the rubber end cap of the filter, this will result in a higher air flow. This configuration is not allowed in countries which have TUV regulations. (Fig. 7)

WARNING: Before starting the engine carry out a final fitment check of the K&N performance kit. It will be necessary for all systems to be checked periodically for alignment, clearance and tightening of all connections. Failure to follow the instructions or proper maintenance may void the warranty.

FILTER MAINTENANCE: K&N suggests checking the filter periodically for excessive dirt build-up. When the element becomes covered in dirt (or once a year), service it according to the instructions on the service kit available from your K&N dealer, part number 99-5000EU

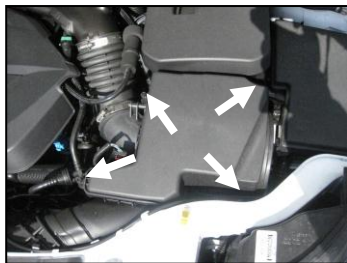


Fig. # 1



Fig. # 2



Fig. # 3

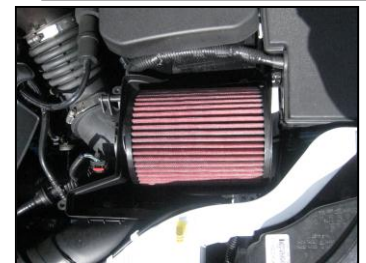


Fig. # 4

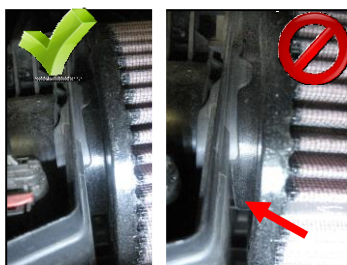


Fig. # 4



Fig. # 5



Fig. # 6



Fig. # 7