



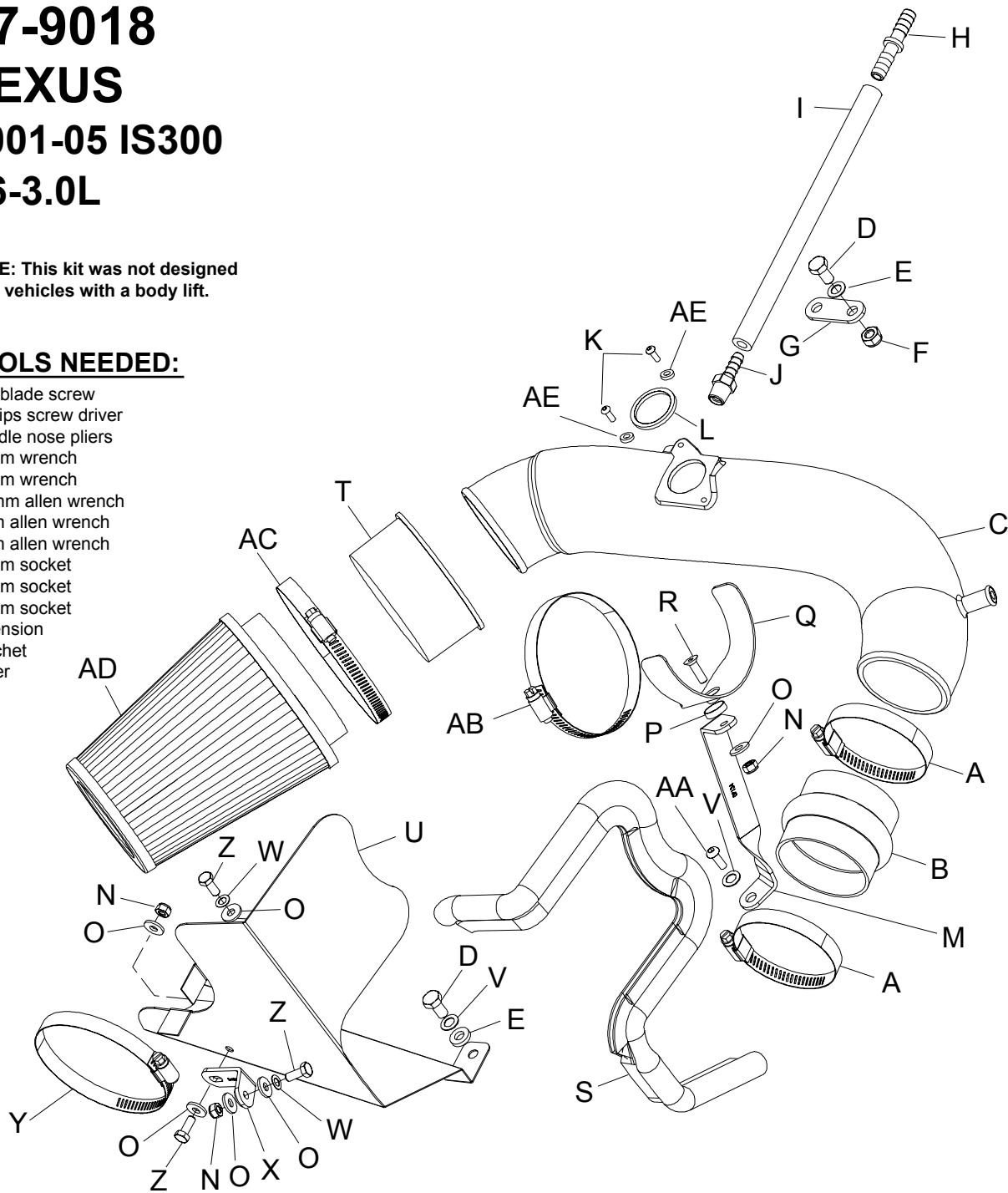
INSTALLATION INSTRUCTIONS

57-9018
LEXUS
2001-05 IS300
L6-3.0L

NOTE: This kit was not designed to fit vehicles with a body lift.

TOOLS NEEDED:

Flat blade screw
 Phillips screw driver
 Needle nose pliers
 13mm wrench
 10mm wrench
 2.5mm allen wrench
 4mm allen wrench
 5mm allen wrench
 10mm socket
 12mm socket
 13mm socket
 Extension
 Ratchet
 driver



PARTS LIST:

Description	Qty.	Part #
A Hose clamp #44	2	08577
B Hump hose	1	08185
C Intake tube (CB)	1	087052
D Bolt 8mm-1.25 x 16mm hexhead	2	07844
E Washer 5/16" id x 5/8" od flat	2	08276
F Nut 8mm nylock	1	07542
G Bracket small	1	07133
H Vent; strt, 3/8" hose-3/8" hose	1	08041
I Silicone hose	1	08403
J Vent; strt, 5/16" barbed, 1/4 npt	1	08908
K Screw; m4-.7 x 16mm, button head	2	07793
L Gasket	1	09013
M Bracket, twist L	1	07134
N Nut 6mm nylock hexhead	3	07553
O Washer 1/4" id x 5/8" od flat zn	6	08275
P Washer, conical, nylon, black	1	08180
Q Saddle bracket	1	078855
R Bolt; m6-1.00 x 20mm f/h/a ss	1	08376
S Edge trim 26"	1	102488
T Filter adapter (A040E0)	1	21561
U Heat shield	1	07466
V Washer 8mm spring (wave)	2	08239
W Washer 6mm wave	2	08174
X Bracket; angled I-bend	1	070942
Y Hose clamp #60	1	08624
Z Bolt; m6-1.00 x 16mm hexhd tp	3	07703
AA Bolt; 8mm-1.25x25mm button head	1	07748
AB Hose clamp #48	1	08601
AC Hose clamp #64	1	08648
AD K&N Filtercharger	1	RP-4980
AE Spacer	2	06531

NOTE: FAILURE TO FOLLOW INSTALLATION INSTRUCTIONS AND NOT USING THE PROVIDED HARDWARE MAY DAMAGE THE INTAKE TUBE, THROTTLE BODY AND ENGINE.

TO START:

1. Turn off the ignition and disconnect the negative battery cable.

NOTE: Disconnecting the negative battery cable erases pre-programmed electronic memories. Write down all memory settings before disconnecting the negative battery cable. Some radios will require an anti-theft code to be entered after the battery is reconnected. The anti-theft code is typically supplied with your owner's manual. In the event your vehicles' anti-theft code cannot be recovered, contact an authorized dealership to obtain your vehicles anti-theft code.



2. Loosen and remove the 4 nuts that retain the engine cover to engine then remove the engine cover.



3. Disconnect the mass air electrical connection.



4. Remove the 3 clips that retain the electrical harness onto the factory air box.



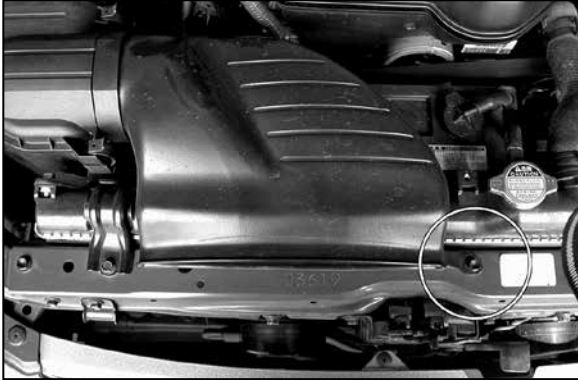
5. Remove the crank case vent from the intake tube as shown.



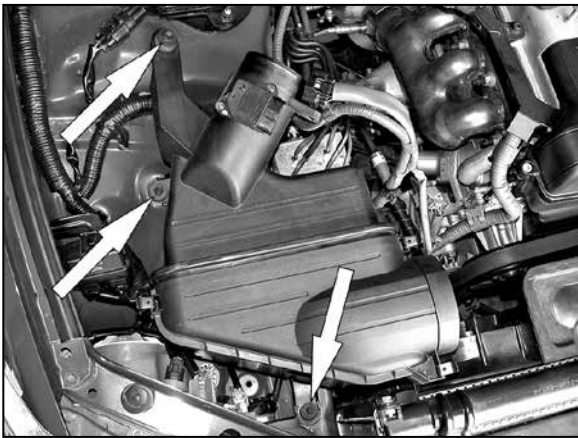
6. Loosen the 2 hose clamps that secure the intake tube to the air box and the throttle body.



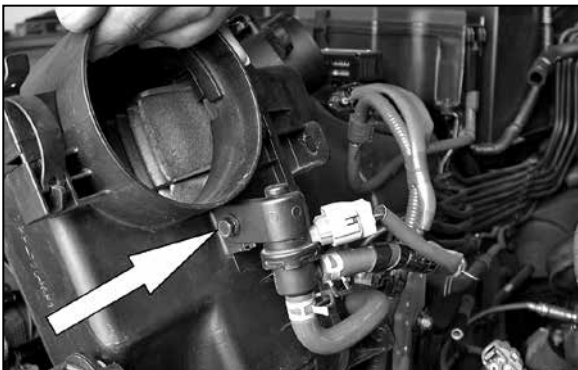
7. Remove the intake tube as shown.



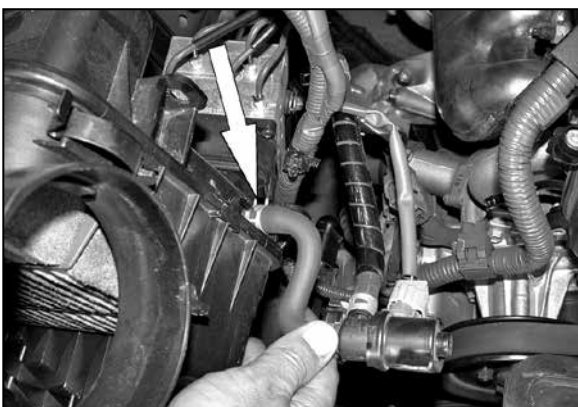
8. Loosen and remove the 10mm bolt that retains the fresh air intake to the vehicle then remove from the vehicle.



9. Remove the 3 bolts that retain the air box onto the vehicle.



10. Lift air box up to access the 10mm bolt that retains the evap Solenoid to the air box then remove bolt.



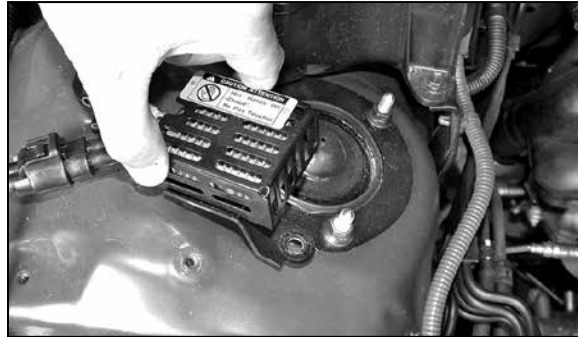
11. Disconnect evap Hose from air box.



12. Remove the complete air box from vehicle.



13. Loosen the 12mm nut.
NOTE: Do not remove nut.



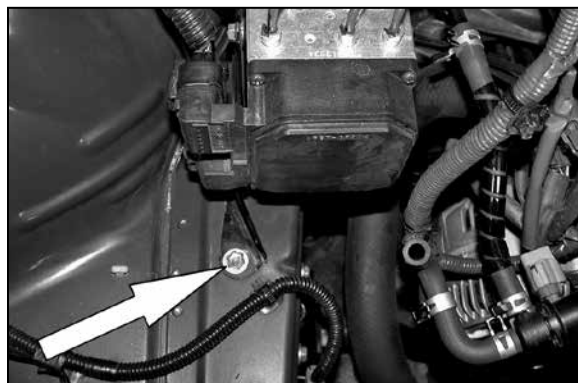
14. Loosen and remove the 12mm nut then lift and rotate relay box clockwise as shown.



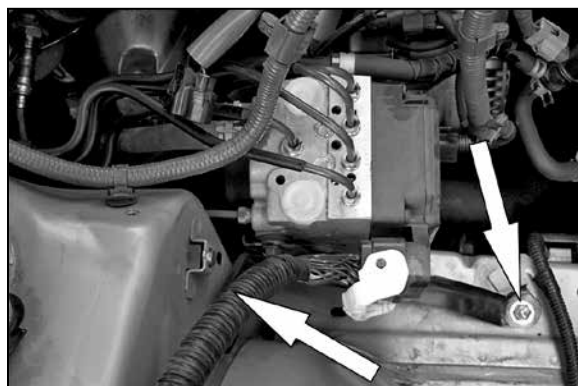
15. Install the new K&N® bracket onto relay and then onto strut mount as shown. Tighten all hardware completely.



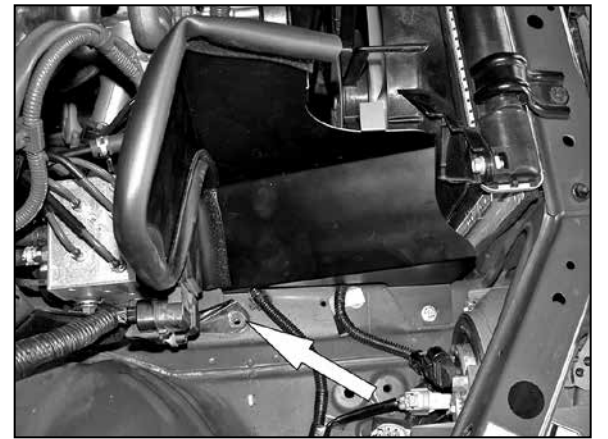
16. Install edge trim onto the heat shield as shown. Trim if needed.



17. On 2001 models, loosen and remove the 12mm bolt that retains the ABS pump to vehicle.



17a. On 2002 and later models, loosen and remove the 2 bolts and one nut that retains the ABS pump to the vehicle.



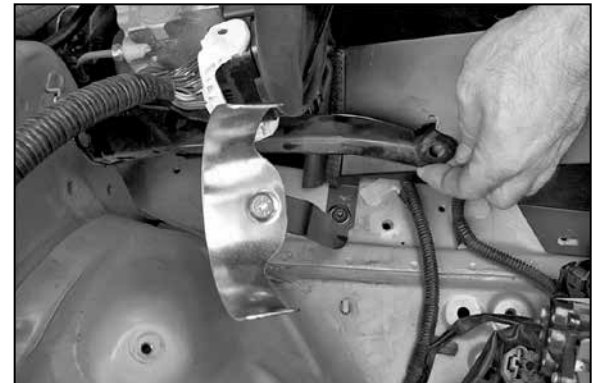
18. Install heat shield onto the vehicle and fasten to the vehicle with the provided 6mm bolt as shown.
NOTE: The heat shield needs to be mounted under ABS pump bracket.



19. Assemble the saddle bracket onto the new bracket as shown.



20. On 01 models, mount the heat shield and saddle bracket assembly onto the vehicle with the provided 8mm button head bolt as shown.

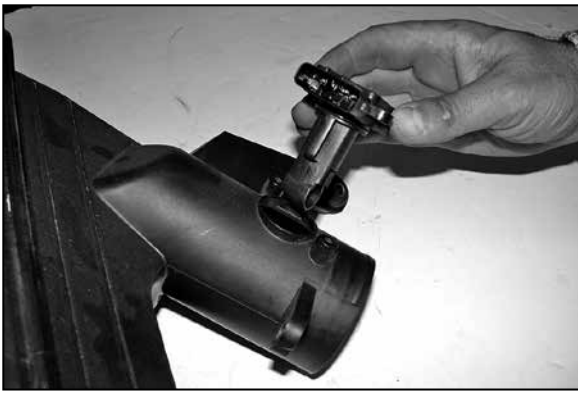


20a. On 2002 and later models, lift up on the ABS bracket and mount the heat shield and saddle bracket assembly onto the vehicle with the provided 8mm button head bolt as shown.

20b. On 2002 models and later, mount the ABS pump back onto the vehicle with the bolts and nut that were removed in step 17a.



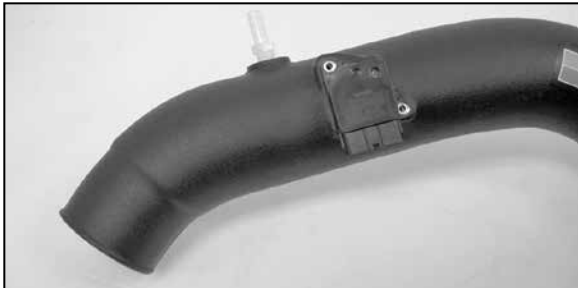
21. Install the vent fitting onto the new K&N® intake tube as shown.
NOTE: Plastic NPT fittings are easy to cross thread. Install the vent fitting "hand" tight, then turn it two complete turns with a wrench.



22. Remove the mass air from the factory air box as shown.



23. Install the provided gasket onto the mass air sensor with the sticky side towards the mass air.



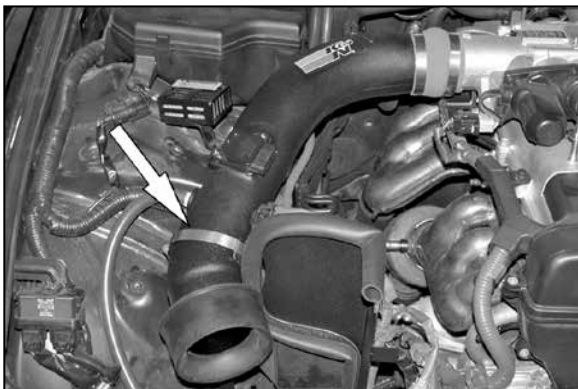
24. Install the mass air onto the new K&N® intake tube with the provided hardware as shown.



25. Install the hump hose onto the throttle with the provided hose clamps.



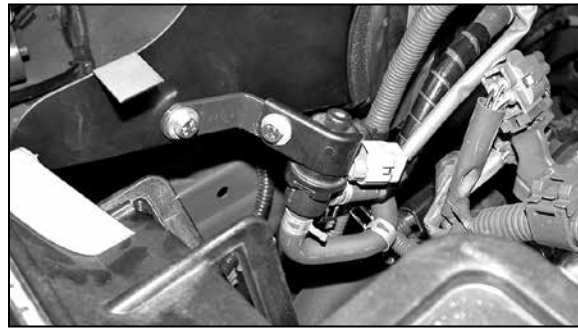
26. Install the filter adapter onto the K&N® intake tube as shown.



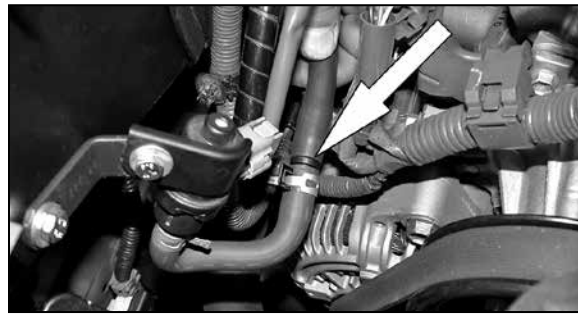
27. Install the K&N® intake tube onto the throttle body and secure the tube to the saddle bracket with the provided hose clamp.



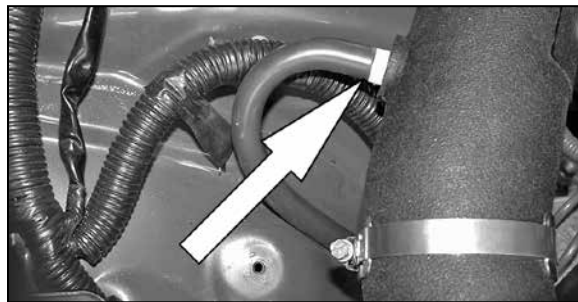
28. Install hose mender into the provided silicone hose as shown.



29. Mount the "L" bracket onto the heat shield and then mount the evap solenoid onto the bracket with the provided hardware.



30. Connect the provided hose onto the evap solenoid as shown.



31. Connect the other end of the silicone hose onto the K&N® intake tube as shown.

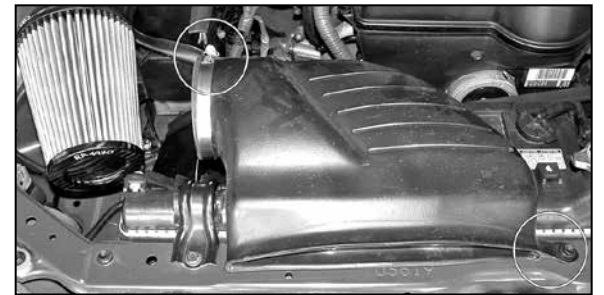


32. Reconnect the crank case vent as shown.



33. Install the K&N® Air Filter onto the intake tube as shown.

NOTE: Drycharger® air filter wrap; part # RC-5149DK is available to purchase separately.



34. Install the fresh air intake with the bolt that was removed in step 8 and then secure the fresh air intake to the heat shield as shown.



35. Reconnect the mass air electrical sensor as shown.



36. Re-install the engine cover with the factory hardware.

37. Reconnect the vehicle's negative battery cable. Double check to make sure everything is tight and properly positioned before starting the vehicle.

38. The C.A.R.B. exemption sticker, (attached), must be visible under the hood so that an emissions inspector can see it when the vehicle is required to be tested for emissions. California requires testing every two years, other states may vary.

39. It will be necessary for all K&N® high flow intake systems to be checked periodically for realignment, clearance and tightening of all connections. Failure to follow the above instructions or proper maintenance may void warranty.

ROAD TESTING:

1. Start the engine with the transmission in neutral or park, and the parking brake engaged. Listen for air leaks or odd noises. For air leaks secure hoses and connections. For odd noises, find cause and repair before proceeding. This kit will function identically to the factory system except for being louder and much more responsive.

2. Test drive the vehicle. Listen for odd noises or rattles and fix as necessary.

3. If road test is fine, you can now enjoy the added power and performance from your kit.

4. K&N Engineering, Inc., requires cleaning the intake system's air filter element every 100,000 miles. When used in dusty or off-road environments, our filters will require cleaning more often. We recommend that you visually inspect your filter once every 25,000 miles to determine if the screen is still visible. When the screen is no longer visible some place on the filter element, it is time to clean it. To clean and re-oil, purchase our filter Recharger® service kit, part number 99-5050 or 99-5000 and follow the easy instructions.