

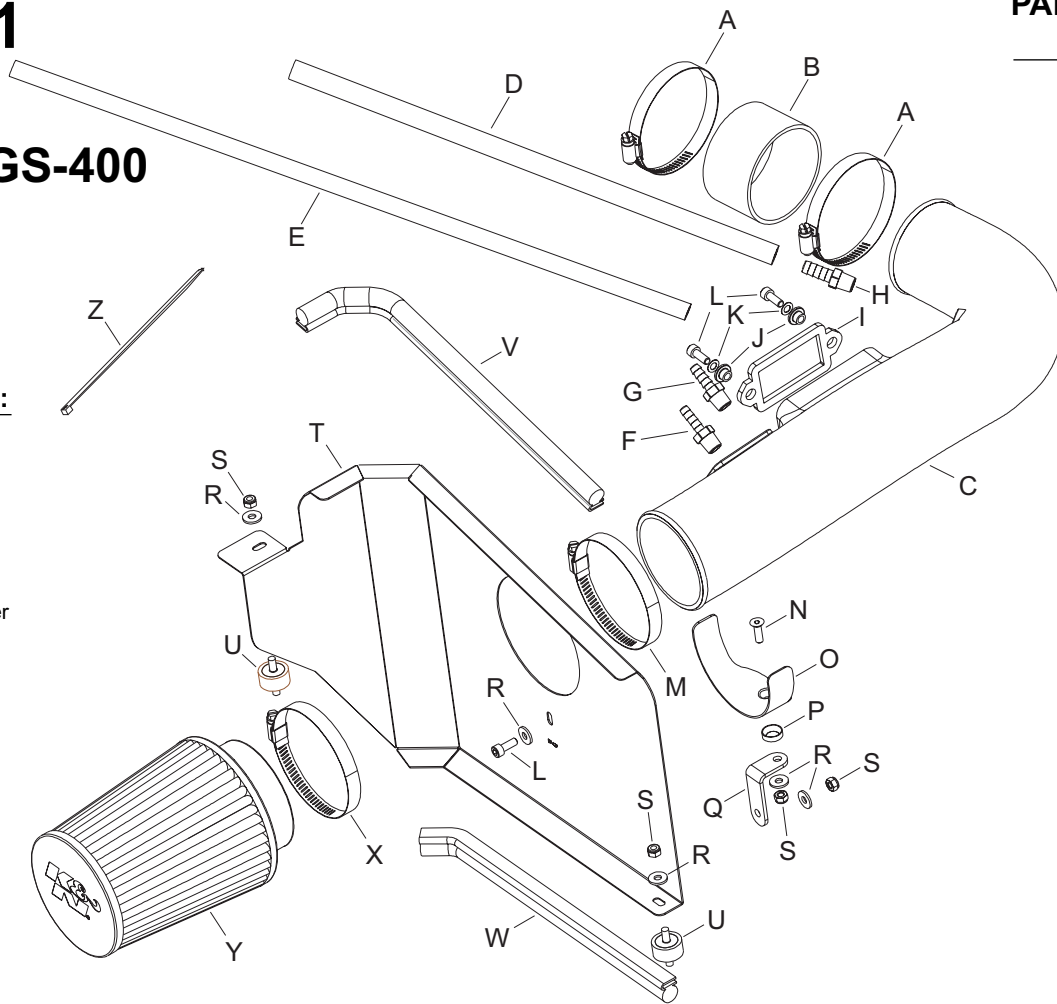


## INSTALLATION INSTRUCTIONS

**57-9011**  
**LEXUS**  
**1998-00 GS-400**  
**V8-4.0L**

**TOOLS NEEDED:**

- 10mm Socket
- Ratchet
- Ratchet Extension
- 7/16 Socket
- 10mm Wrench
- 7/16 Wrench
- 4mm Allen
- Flat Blade Screwdriver



**PARTS LIST:**

Description	Qty.	Part#
Hose Clamp #52	2	08610
Silicone Hose	1	08690
Intake Tube	1	08766
Silicone Hose 3/8"ID x 17"L	1	08404
Silicone Hose 5/16"ID x 24"L	1	08403
Vent 1/4" Hose, 1/4"NPT Plas	1	08046
Vent 5/16" Hose, 1/4"NPT Plas	1	08908
Vent 3/8" Hose, 1/4"NPT Plas	1	08047
Gasket	1	09032
Spacer	2	06501
Washer 6mm Wave	2	08174
Bolt 6mm-1.00 x 16mm F/H/A	3	07818
Hose Clamp #56	1	08620
Bolt 6mm-1.00 x 20mm F/H/A	1	08376
Bracket; Saddle	1	078855
Washer, Conical, Nylon, Blk	1	08180
Bracket; L-Bend	1	07078
Washer 1/4"ID x 5/8"OD	5	08275
Nut 6mm Nylock	4	07553
Heat Shield	1	07427
Stud M6-1.0mm Rubber Mntd	2	07027
Edge Trim 14" Long	1	102478
Edge Trim 12" Long	1	102477
Hose Clamp #60	1	08624
<a href="#">Air Filter</a>	1	RC-4630
Cable Ties	1	21591

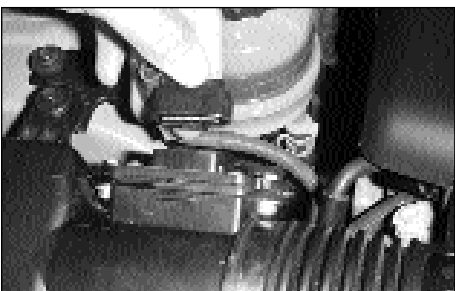
**NOTE: FAILURE TO FOLLOW INSTALLATION INSTRUCTIONS AND NOT USING THE PROVIDED HARDWARE MAY DAMAGE THE INTAKE TUBE, THROTTLE BODY AND ENGINE.**

**TO START:**

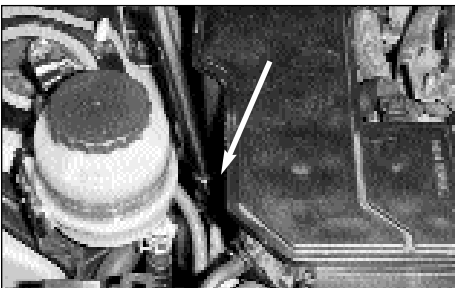
1. Turn the ignition OFF and disconnect the vehicle's negative battery cable.



2. Loosen the four bolts that secure the engine cover, then remove the cover.



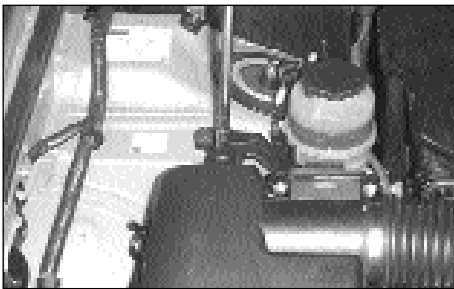
3. Disconnect the mass air electrical connection.



4. Loosen and remove the two bolts that hold the resonator in place.



5. Remove the three vacuum lines that go to the resonator.



6. Loosen and remove the three bolts that hold the air box to the car.



7. Loosen and remove the bolts which holds the fresh air intake, then remove intake.



8. Loosen the hose clamp at throttle body.



9. Remove the complete air box assembly.  
**NOTE: K&N Engineering, Inc., recommends that customers do not discard factory air intake.**



10. Loosen and remove the two bolts that hold mass air sensor onto the stock air box.



11. Then remove the mass air sensor.

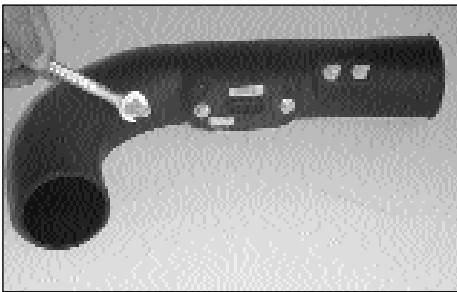


12. Install the provided gasket onto the mass air sensor with the sticky side towards the mass air sensor.



13. Install the provided bushings into the mass air sensor as shown.

14. Install the mass air sensor into the new air intake tube with the hardware provided, then tighten the bolts until the shoulder of the insert contacts the air intake tube.

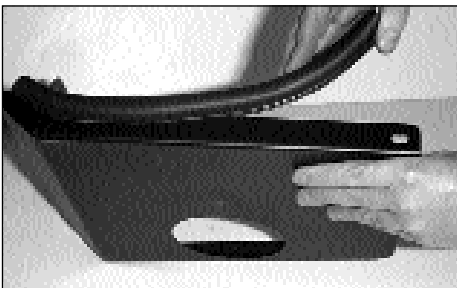


15. Install the barbed vents into the air intake tube

**NOTE: Plastic NPT fittings are easy to cross thread. Install the vent fitting "hand" tight, then turn it two complete turns with a wrench.**



16. Assemble the saddle bracket assembly as shown.



17. Install the edge trim to heat shield as shown.



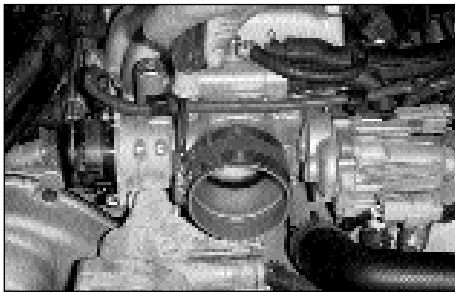
18. Install the saddle bracket assembly to the heat shield as shown.



19. Install the rubber studs to the stock air box mounting location as shown.



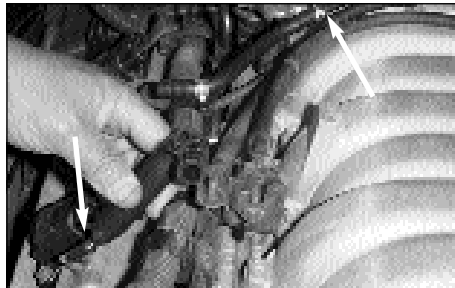
20. Install the heat shield onto the rubber mounted studs with the hardware provided.



21. Install the silicone hose onto the throttle body.



22. Install the new air intake tube to the throttle body and heat shield then tighten the hose clamps.



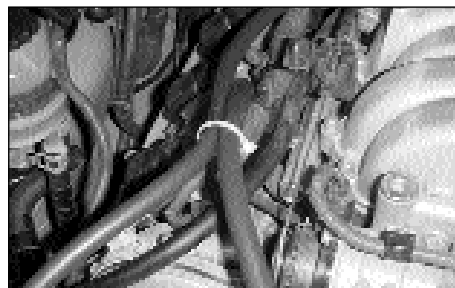
23. Remove the vacuum lines from the motor as shown above.



24. Install the stock vacuum line onto the new air intake tube.



25. Install the new vacuum lines onto the new intake tube as shown.



26. Zip-tie the new vacuum lines together as shown.



27. Install the new K&N® Air Filter onto the new air intake tube.



28. Reconnect the mass air electrical connection.



29. Install the engine cover back onto the motor and tighten the four bolts.

30. Reconnect the vehicle's negative battery cable. Double check to make sure everything is tight and properly positioned before starting the vehicle.

31. The C.A.R.B. exemption sticker, (attached), must be visible under the hood so that an emissions inspector can see it when the vehicle is required to be tested for emissions. California requires testing every two years, other states may vary.

32. It will be necessary for all K&N® high flow intake systems to be checked periodically for realignment, clearance and tightening of all connections. Failure to follow the above instructions or proper maintenance may void warranty.

#### ROAD TESTING:

1. Start the engine with the transmission in neutral or park, and the parking brake engaged. Listen for air leaks or odd noises. For air leaks secure hoses and connections. For odd noises, find cause and repair before proceeding. This kit will function identically to the factory system except for being louder and much more responsive.
2. Test drive the vehicle. Listen for odd noises or rattles and fix as necessary.
3. If road test is fine, you can now enjoy the added power and performance from your kit.
4. K&N Engineering, Inc., requires cleaning the intake system's air filter element every 100,000 miles. When used in dusty or off-road environments, our filters will require cleaning more often. We recommend that you visually inspect your filter once every 25,000 miles to determine if the screen is still visible. When the screen is no longer visible some place on the filter element, it is time to clean it. To clean and re-oil, purchase our filter Recharger® service kit, part number 99-5050 or 99-5000 and follow the easy instructions.