



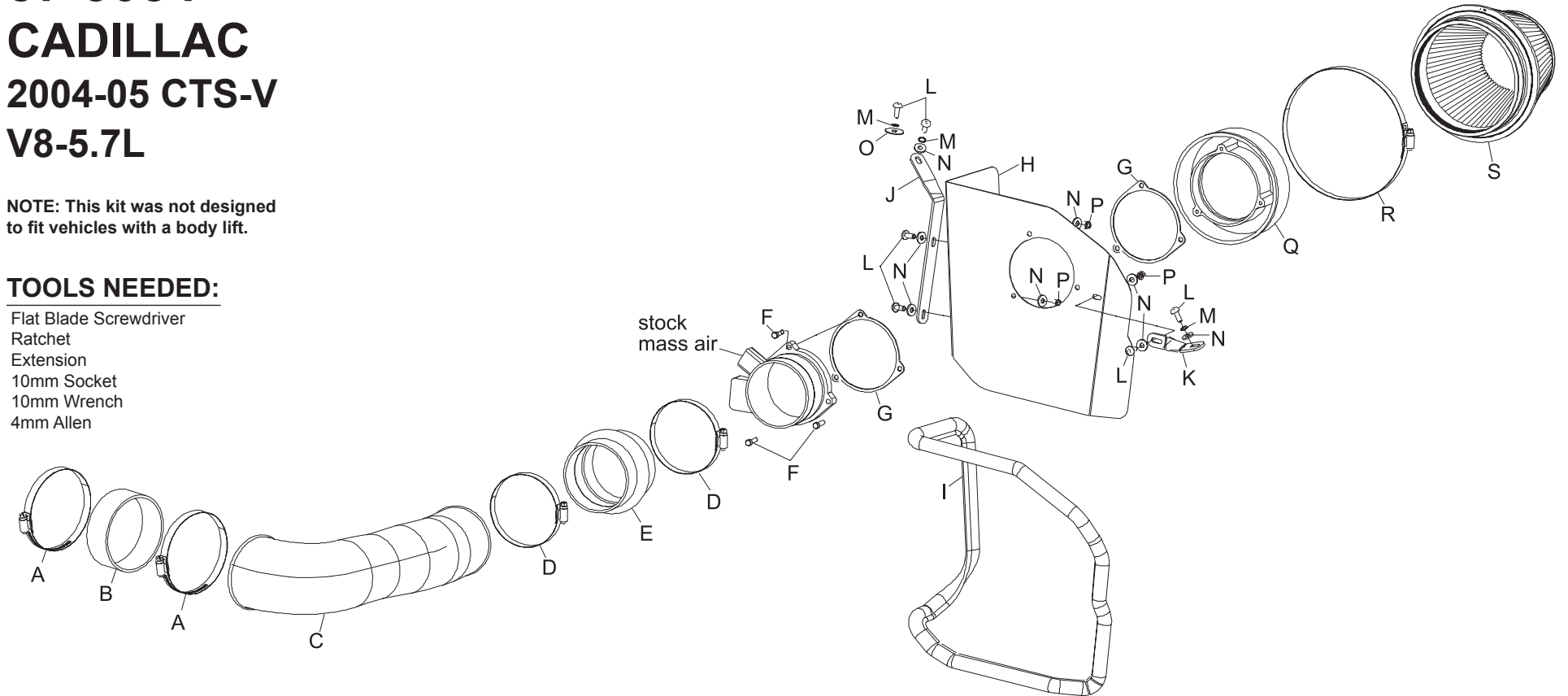
INSTALLATION INSTRUCTIONS

57-3054
CADILLAC
2004-05 CTS-V
V8-5.7L

NOTE: This kit was not designed to fit vehicles with a body lift.

TOOLS NEEDED:

- Flat Blade Screwdriver
- Ratchet
- Extension
- 10mm Socket
- 10mm Wrench
- 4mm Allen



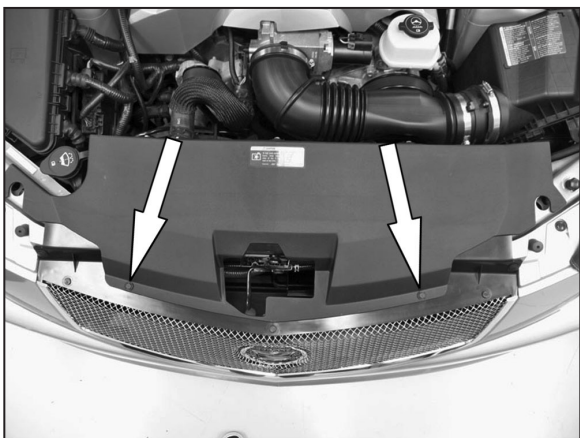
PARTS LIST:

Description	Qty.	Part #	Description	Qty.	Part #	Description	Qty.	Part #
A hose clamp #64	2	08645	H heat shield	1	07666	O washer fender	1	08160
B hose; 4" id x 15" silicone	1	08755	I edge trim 48"	1	102485	P nut, 6mm nylock	3	07553
C intake tube (FI)	1	087179	J bracket angle	1	010126	Q filter adapter #240	1	08783
D hose clamp #56	2	08620	K bracket twist	1	010127	R hose clamp #104	1	08697
E hose; 3.63" id x 3.38" l hump	1	08176	L bolt 6mm-1.00 x 16mm btn hd	6	07730	S air filter	1	RC-2960
F bolt; 5mm-.8x20mm, cap hd allen	3	08320	M washer; split lock	3	08198			
G gasket	2	09033	N washer; 1/4" id x 5/8" od flat	8	08275			

NOTE: FAILURE TO FOLLOW INSTALLATION INSTRUCTIONS AND NOT USING THE PROVIDED HARDWARE MAY DAMAGE THE INTAKE TUBE, THROTTLE BODY AND ENGINE.

TO START:

1. Turn off the ignition and disconnect the negative battery cable.
NOTE: Disconnecting the negative battery cable erases pre-programmed electronic memories. Write down all memory settings before disconnecting the negative battery cable. Some radios will require an anti-theft code to be entered after the battery is reconnected. The anti-theft code is typically supplied with your owner's manual. In the event your vehicles anti-theft code cannot be recovered, contact an authorized dealership to obtain your vehicles anti-theft code.



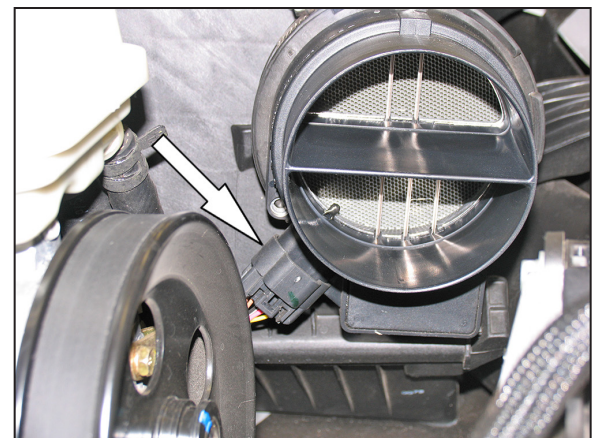
2. Release the two locking pins shown which secure the radiator cover to the radiator core support.



3. Dislodge the cover from the hold on clamps on the under side of the cover and then remove the cover as shown.



4. Loosen the two hose clamps which secure the intake tube to the throttle body and mass air sensor, then remove the intake tube as shown.



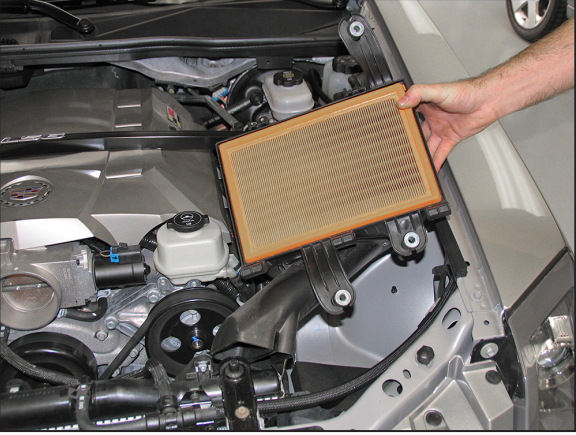
5. Disconnect the mass air sensor electrical connection shown.



6. Loosen the two screws, which secure the air box lid to the air box base.



7. Lift and remove the air box lid and mass air sensor from the lower air box as shown.

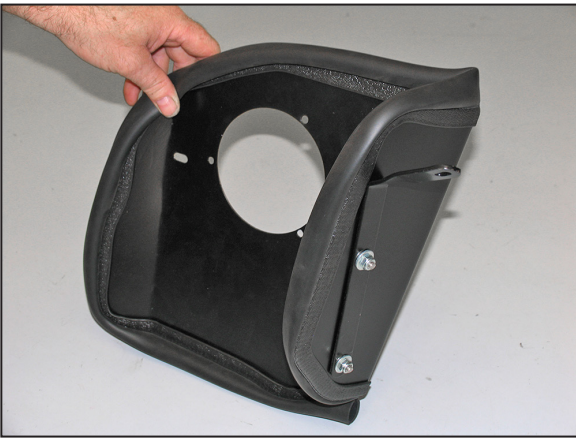


8. Remove the three lower air box retaining bolts and then remove the lower air box assembly as shown.

NOTE: K&N recommends that you do not discard your factory air intake.



9. Install the edge trim onto the heat shield as shown.



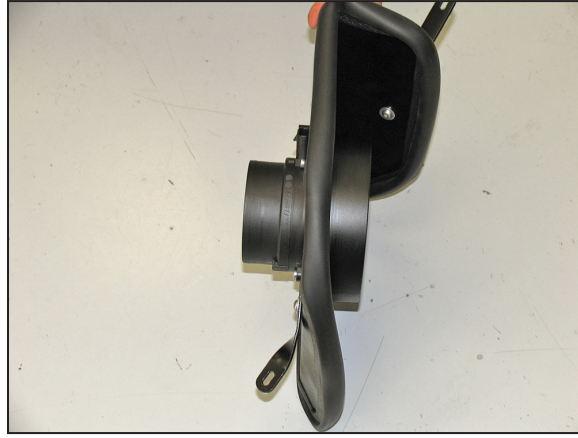
10. Install the heat shield mounting bracket onto the heat shield as shown with the provided hardware.



11. Install the heat shield mounting bracket onto the heat shield as shown with the provided hardware.



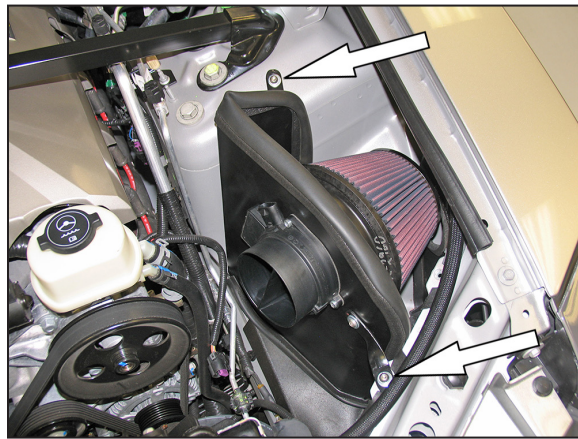
12. Loosen the hose clamp which secures the mass air sensor to the air box and then remove the mass air sensor from the air box as shown.



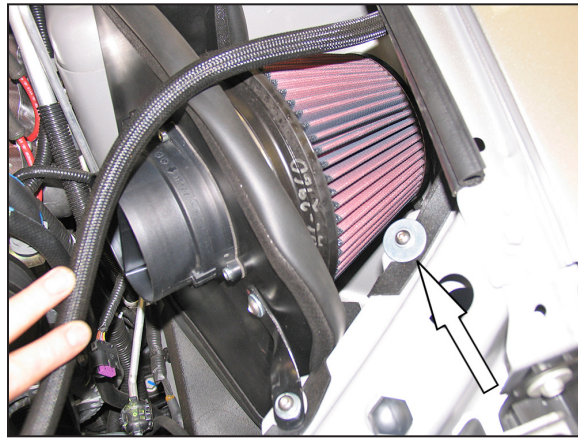
13. Install the mass air sensor onto the heat shield using the gaskets and filter adapter as shown.



14. Install the K&N® air filter onto the heat shield assembly and secure with the provided hose clamp as shown.



15. Install the heat shield and air filter assembly into the vehicle and secure with the provided hardware as shown.



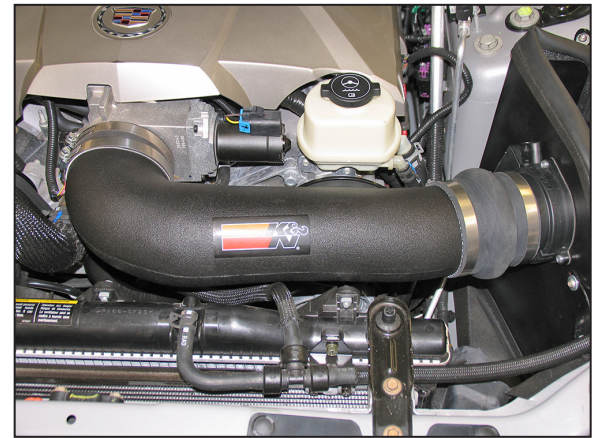
16. Install the provided button head allen and fender washer onto the core support to retain the inner splash shield as shown.



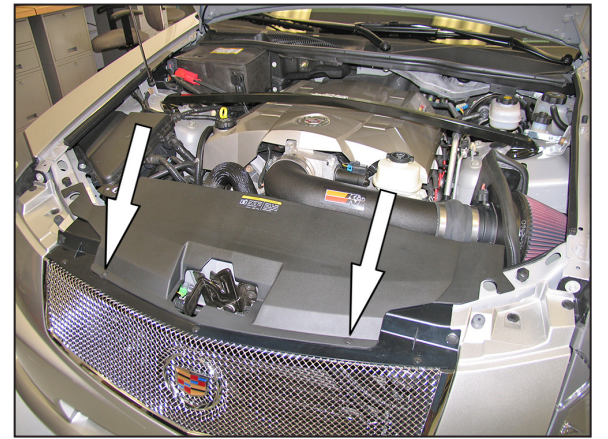
17. Install the silicone hose (08755) onto the throttle body and secure with the provided hose clamps.



18. Install the silicone hump hose onto the K&N® intake tube as shown and secure with the provided hose clamp.



19. Install the K&N® intake tube onto the throttle body and mass air sensor as shown and secure with the provided hose clamp.



20. Reinstall the radiator cover onto the radiator core support and reinstall the clips removed in step #2.



21. Reconnect the mass air sensor electrical connection as shown.



22. Reconnect the vehicle's negative battery cable. Double check to make sure everything is tight and properly positioned before starting the vehicle.

23. The C.A.R.B. exemption sticker, (attached), must be visible under the hood so that an emissions inspector can see it when the vehicle is required to be tested for emissions. California requires testing every two years, other states may vary.

24. It will be necessary for all K&N® high flow intake systems to be checked periodically for realignment, clearance and tightening of all connections. Failure to follow the above instructions or proper maintenance may void warranty.

ROAD TESTING:

1. Start the engine with the transmission in neutral or park, and the parking brake engaged. Listen for air leaks or odd noises. For air leaks secure hoses and connections. For odd noises, find cause and repair before proceeding. This kit will function identically to the factory system except for being louder and much more responsive.

2. Test drive the vehicle. Listen for odd noises or rattles and fix as necessary.

3. If road test is fine, you can now enjoy the added power and performance from your kit.

4. K&N Engineering, Inc., requires cleaning the intake system's air filter element every 100,000 miles. When used in dusty or off-road environments, our filters will require cleaning more often. We recommend that you visually inspect your filter once every 25,000 miles to determine if the screen is still visible. When the screen is no longer visible some place on the filter element, it is time to clean it. To clean and re-oil, purchase our filter Recharger® service kit, part number 99-5050 or 99-5000 and follow the easy instructions.