



# INSTALLATION INSTRUCTIONS

## 57-3047 CHEVROLET / GMC 2005 SILVERADO HD (w/Panel Filter) 2004 SIERRA HD (LLY) V8 6.6L TURBO DIESEL

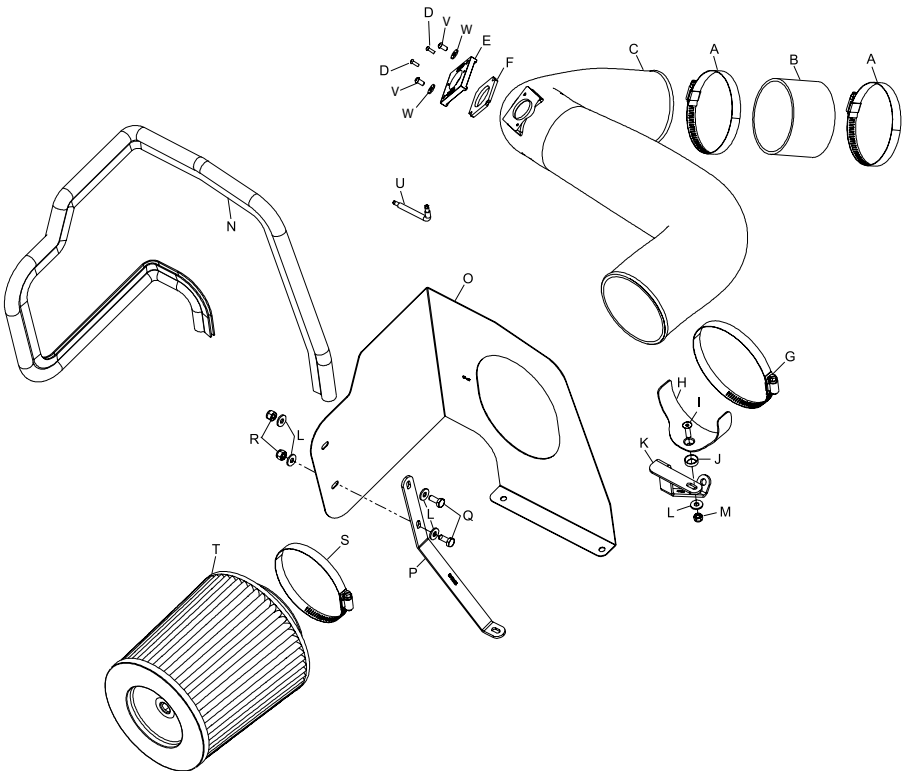
NOTE: This kit was not designed to fit vehicles with a body lift.

### TOOLS NEEDED:

- 7/16" socket
- 7/16" wrench
- 2.5mm allen wrench
- 4mm allen wrench
- 10mm socket
- 10mm wrench
- 14mm socket
- 14mm wrench
- extension
- flat blade screwdriver
- ratchet

### PARTS LIST:

Description	Qty.	Part #	Description	Qty.	Part #	Description	Qty.	Part #
A Hose Clamp #56	2	08620	I Bolt 6mm F/H/A	1	08376	Q Bolt 1/4-20 x 5/8	2	08315
B Silicone Hose	1	08456	J Washer; Conical, Black	1	08180	R Nut; 1/4-20 Nylock	2	07517
C Intake Tube	1	087131-1	K Bracket	1	010080	S Hose Clamp #72	1	08671
D Bolt M4-.7, B/H/A	2	07726	L Washer; 1/4"ID x 5/8"OD	5	08275	T Air Filter	1	RC-4900
E Adapter; Mass Air Sensor	1	27317	M Nut; 6mm Nylock	1	07553	U Wrench, T20	1	69081
F Gasket	1	09074	N Edge Trim 50"	1	102481	V Bolt; M6 x 1.00 x 16mm , Buttnhd, SS	2	07730
G Hose Clamp #64	1	08648	O Heat Shield	1	07457	W Washer; 1/4" Lock, ZN	2	08198
H Saddle Bracket	1	078855	P Bracket	1	070025			



NOTE: FAILURE TO FOLLOW INSTALLATION INSTRUCTIONS AND NOT USING THE PROVIDED HARDWARE MAY DAMAGE THE INTAKE TUBE, THROTTLE BODY AND ENGINE.

### TO START:

- Turn off the ignition and disconnect the negative battery cable.  
**NOTE: Disconnecting the negative battery cable erases pre-programmed electronic memories. Write down all memory settings before disconnecting the negative battery cable. Some radios will require an anti-theft coded to be entered after the battery is reconnected. The anti-theft code is typically supplied with your owner's manual. In the event your vehicles' anti-theft code cannot be recovered, contact an authorized dealership to obtain your vehicles anti-theft code.**



- Depress the locking tab on the mass air sensor electrical connector, and then disconnect the electrical connection.



- Loosen the hose clamp, which secures the intake tube to the intake manifold, and then disconnect the intake tube from the intake manifold.



- Lift up on the air box assembly to release from the mounting grommets, and then remove the air box and intake tube assembly from the vehicle.  
**NOTE: K&N Engineering, Inc., recommends that customers do not discard factory air intake.**



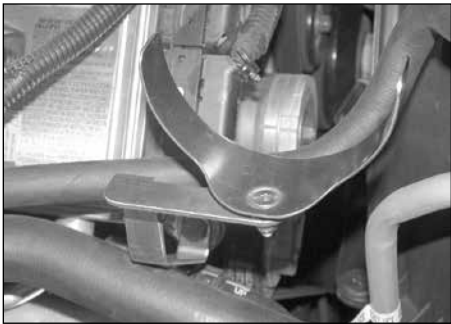
- Install the silicone hose (08456) onto the intake manifold and secure with the provided hose clamps.



- Install the saddle bracket onto the K&N intake tube brackets as shown.



- Remove the lower front engine processor mounting bolt shown.



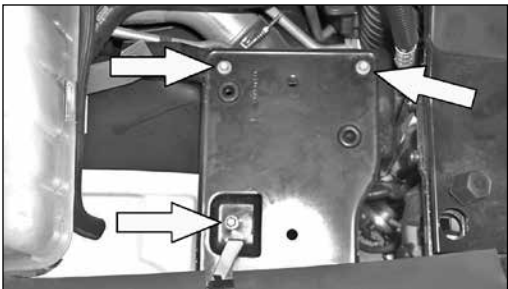
- Using the factory bolt removed in step #7, install the tube-mounting bracket to the engine processor.



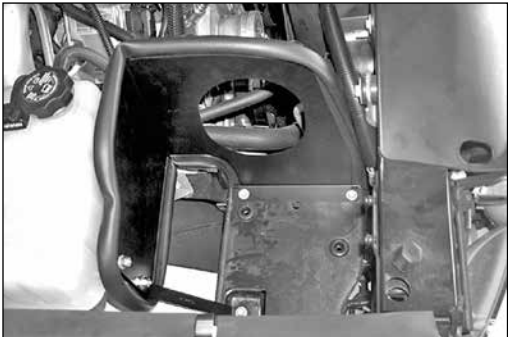
- Apply the provided trim seal to the heat shield assembly as show.  
**NOTE: Some trimming of the edge trim will be necessary.**



- Install bracket onto heat shield as shown. Do not tighten completely.



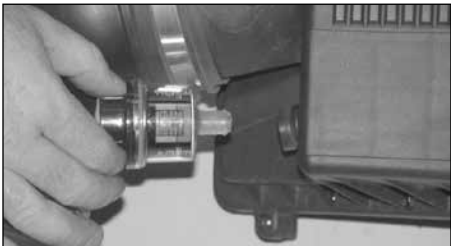
11. Remove the three bolts from the stock airbox mounting tray.



12. Mount the heat shield onto the airbox mounting tray and secure with the three bolts removed in step 10.



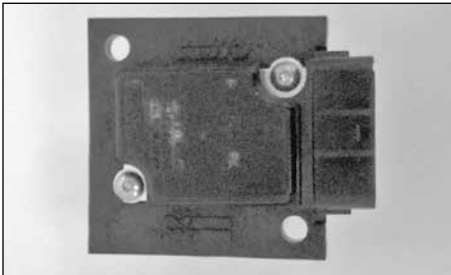
13. Using the "TORX" T20 wrench provided, loosen and remove the two-torx screw that retain the mass air sensor, and then remove the sensor.



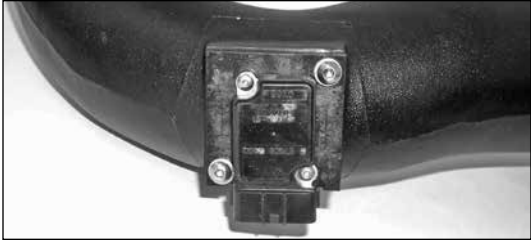
14. Remove the restriction gauge and grommet from the stock air box as shown.



15. Install the provided gasket onto the mass air sensor adapter as shown.



15a. Install the mass air sensor into the K&N® mass air sensor adapter and secure with the provided hardware.



15b. Install the mass air sensor assembly into the K&N® intake tube and secure with the provided hardware.



16. Secure the K&N® intake tube to the intake manifold with the provided hose clamp.



17. Install saddle bracket onto intake tube with hose clamp provided. Adjust for best fit and tighten all hardware.



18. Adjust heat shield and bracket for necessary clearance, then tighten all hardware completely.



19. Install grommet onto filter as shown.



20. Install filter restriction gauge onto K&N® air filter as shown.



21. Install the K&N® air filter onto the intake tube as shown and tighten completely.  
**NOTE: Drycharger® air filter wrap; part number RC-4900DK is available to purchase separately.**



22. Reconnect the mass air sensor electrical connection as shown.



23. Reconnect the vehicle's negative battery cable. Double check to make sure everything is tight and properly positioned before starting the vehicle.

24. The C.A.R.B. exemption sticker, (attached), must be visible under the hood, so the emissions inspector can see it when the vehicle is required to be tested for emissions. California requires testing every two years, other states may vary.

25. **NOTE:** Most General Motors vehicles have the Vehicle Emissions Certification Information (VECI) label affixed to the air filter box. In order to be compliant with California emissions laws, the label **MUST** remain in the engine compartment. If the Vehicle Emission Control Information label is removed during modification, a new replacement label must be obtained and installed in a readily visible position in the engine compartment. The label shall not be affixed to any equipment which is easily detached from the vehicle. We recommend that the label is affixed to the underside of the hood adjacent to the hood latch. The label is Vehicle Identification Number dependent and can be ordered from the vehicle dealership. In order to receive the proper decal please bring your VIN with you. Failure to have the VECI under the hood may result in failure of a pre-registration smog test.

26. It will be necessary for all K&N® high flow intake systems to be checked periodically for realignment, clearance and tightening of all connections. Failure to follow the above instructions or proper maintenance may void warranty.

**ROAD TESTING:**

1. Start the engine with the transmission in neutral or park, and the parking brake engaged. Listen for air leaks or odd noises. For air leaks secure hoses and connections. For odd noises, find cause and repair before proceeding. This kit will function identically to the factory system except for being louder and much more responsive.

2. Test drive the vehicle. Listen for odd noises or rattles and fix as necessary.

3. If road test is fine, you can now enjoy the added power and performance from your kit.

4. K&N Engineering, Inc., suggests checking the air filter element periodically for excessive dirt build-up. When the element becomes covered in dirt (or once a year), service it according to the instructions on the Recharger® service kit, part number 99-5050 or 99-5000.

**IMPORTANT: Service air filter according to the K&N® cleaning instructions (99-5050) when the indicator on the restriction gauge reaches the last two lines in the green. Do not run the vehicle with the yellow indicator in the red, as damage to the air filter and or engine could result.**

**50-STATE STREET LEGAL**  
**K&N CARB EXEMPT K&N**