

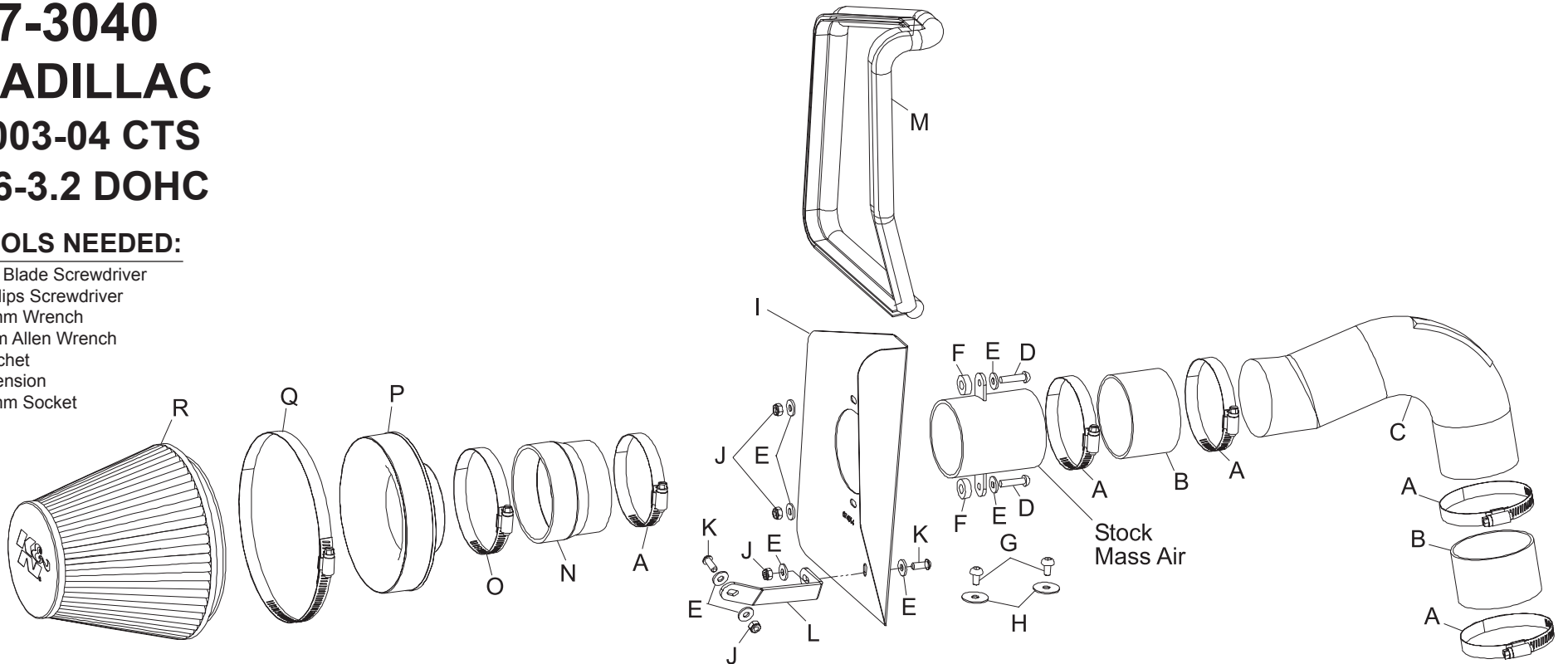


INSTALLATION INSTRUCTIONS

57-3040
CADILLAC
2003-04 CTS
V6-3.2 DOHC

TOOLS NEEDED:

- Flat Blade Screwdriver
- Phillips Screwdriver
- 10mm Wrench
- 4mm Allen Wrench
- Ratchet
- Extension
- 10mm Socket



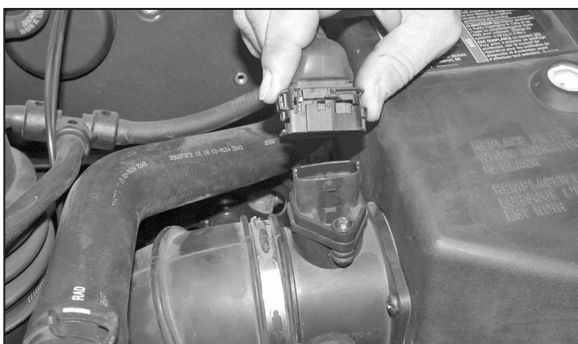
PARTS LIST:

Description	Qty.	Part #	Description	Qty.	Part #	Description	Qty.	Part #
A hose clamp #48	5	08601	H 1/4" id x 1.0" od fender washer	2	08160	O hose clamp #52	1	08610
B silicone hose	2	08434	I heat shield	1	074014	P filter adapter #380	1	21512-1
C intake tube (DG)	1	087102	J 6mm-1.00 nylock nut	4	07553	Q hose clamp #104	1	08697
D B/H/A; m6-1.00 x 25mm	2	07729	K B/H/A; m6-1.00 x 16mm	2	07730	R filtercharger	1	RF-1048
E 1/4" id x 5/8" od flat washer	8	08275	L bracket	1	07184			
F 1/4" id x 5/8" x 1/4" L spacer	2	06555	M edge trim 39"L	1	102496			
G B/H/A; m6-1.00 x 12mm	2	07794	N silicone step hose	1	08051			

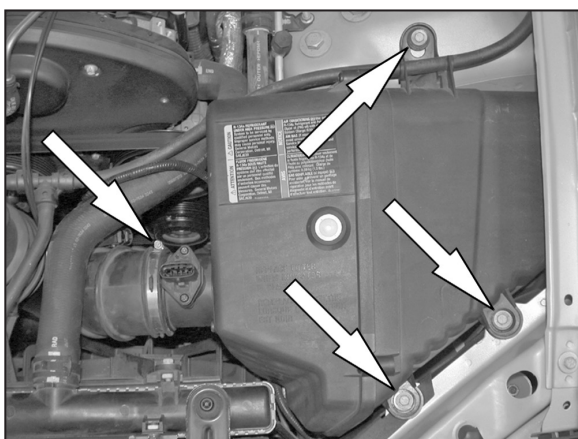
NOTE: FAILURE TO FOLLOW INSTALLATION INSTRUCTIONS AND NOT USING THE PROVIDED HARDWARE MAY DAMAGE THE INTAKE TUBE, THROTTLE BODY AND ENGINE.

TO START:

1. Turn off the ignition and disconnect the negative battery cable.
NOTE: Disconnecting the negative battery cable erases pre-programmed electronic memories. Write down all memory settings before disconnecting the negative battery cable. Some radios will require an anti-theft code to be entered after the battery is reconnected. The anti-theft code is typically supplied with your owner's manual. In the event your vehicles anti-theft code cannot be recovered, contact an authorized dealership to obtain your vehicles anti-theft code.



2. Disconnect the mass air sensor electrical connection.



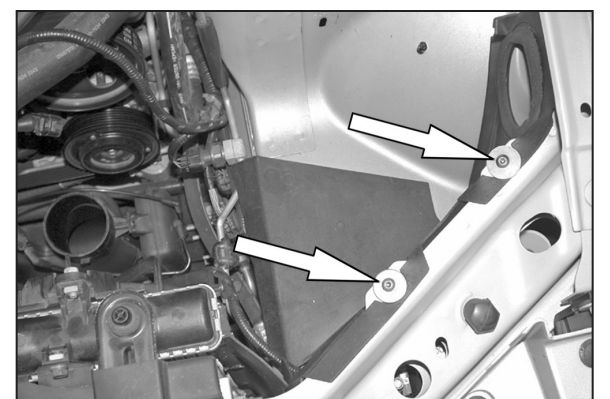
3. Loosen hose clamp at the mass air, then remove the three 10mm bolts that secure air box to vehicle.



4. Remove air box from vehicle as shown.



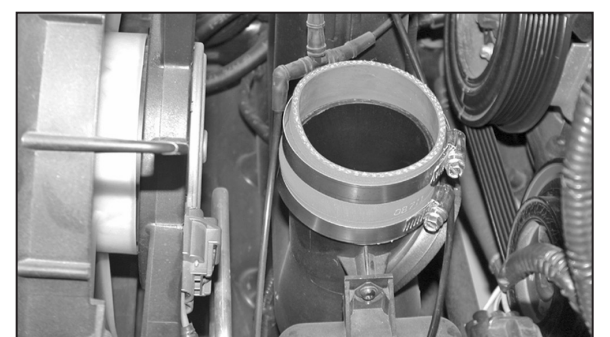
5. Loosen the lower hose clamp on the intake tube, then remove intake tube as shown.
NOTE: K&N Engineering, Inc., recommends that customers do not discard factory air intake.



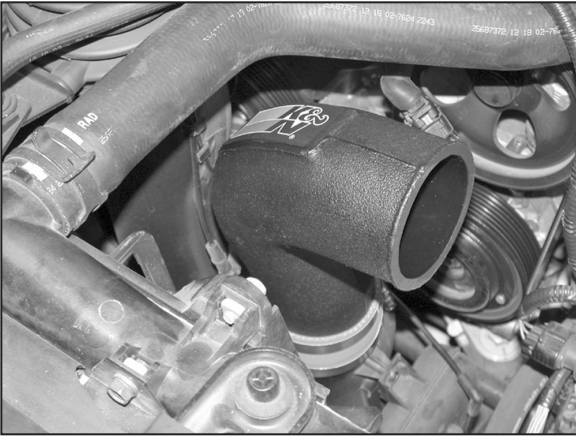
6. Secure splash shield onto vehicle with the provided hardware as shown.



7. Remove the two screws that secure the mass air sensor to air box, then remove mass air sensor.



8. Install silicone hose (08434) onto intake track with the provided hose clamps as shown.



9. Install the new K&N® intake tube onto the intake track and secure with the provided hose clamps.



10. Install the mass air sensor onto the heat shield with the provided spacers and hardware as shown.



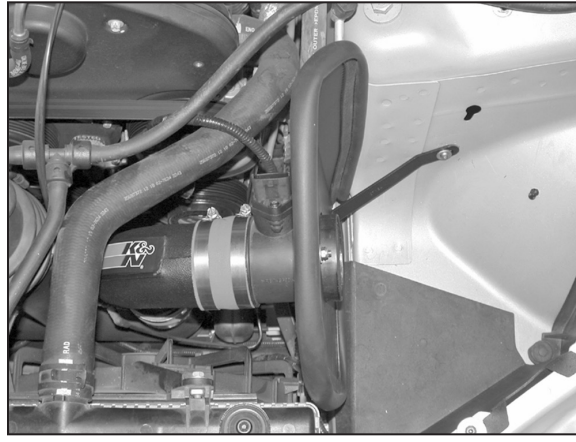
11. Install edge trim onto heat shield as shown. Trim if needed.



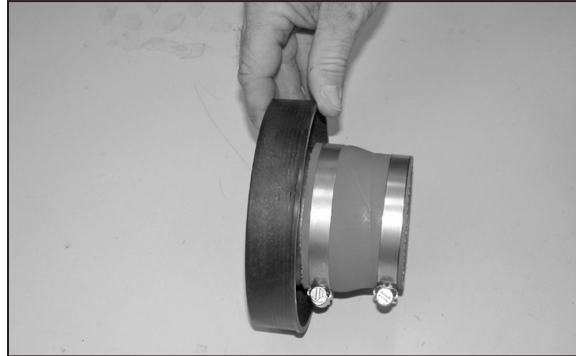
12. Attach the bracket onto heat shield with the provided hardware as shown.



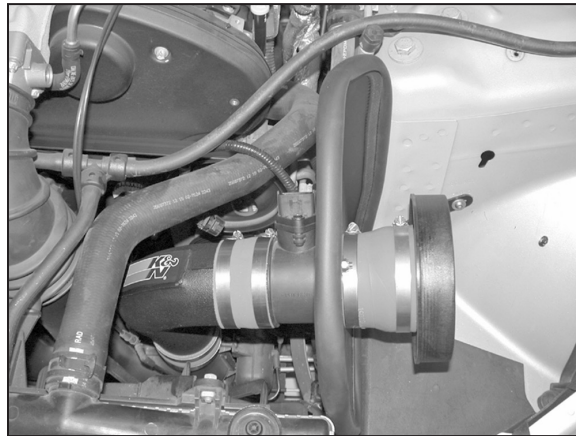
13. Install silicone hose (08434) onto the mass air assembly with the provided hose clamps as shown.



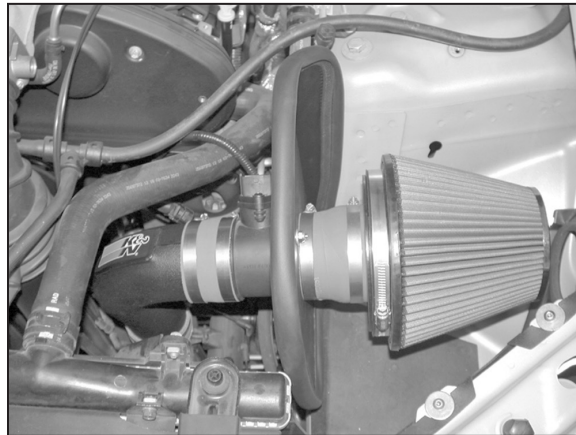
14. Install the heat shield assembly onto the vehicle, then attach intake tube to silicone hose and secure bracket to wheel well as shown.



15. Install the silicone hose (08051) onto the filter adapter as shown.



16. Install the filter adapter onto the mass air sensor with the provided hose clamps.



17. Install the K&N® filtercharger onto the mass air assembly as shown.



18. Reconnect the mass electrical connection as shown.



19. Reconnect the vehicle's negative battery cable. Double check to make sure everything is tight and properly positioned before starting the vehicle.

20. The C.A.R.B. exemption sticker, (attached), must be visible under the hood so that an emissions inspector can see it when the vehicle is required to be tested for emissions. California requires testing every two years, other states may vary.

21. It will be necessary for all K&N® high flow intake systems to be checked periodically for realignment, clearance and tightening of all connections. Failure to follow the above instructions or proper maintenance may void warranty.

ROAD TESTING:

1. Start the engine with the transmission in neutral or park, and the parking brake engaged. Listen for air leaks or odd noises. For air leaks secure hoses and connections. For odd noises, find cause and repair before proceeding. This kit will function identically to the factory system except for being louder and much more responsive.

2. Test drive the vehicle. Listen for odd noises or rattles and fix as necessary.

3. If road test is fine, you can now enjoy the added power and performance from your kit.

4. K&N Engineering, Inc., requires cleaning the intake system's air filter element every 100,000 miles. When used in dusty or off-road environments, our filters will require cleaning more often. We recommend that you visually inspect your filter once every 25,000 miles to determine if the screen is still visible. When the screen is no longer visible some place on the filter element, it is time to clean it. To clean and re-oil, purchase our filter Recharger® service kit, part number 99-5050 or 99-5000 and follow the easy instructions.