



# INSTALLATION INSTRUCTIONS

**57-3034**

**CHEVROLET / GMC**

**2001-04 Silverado HD**

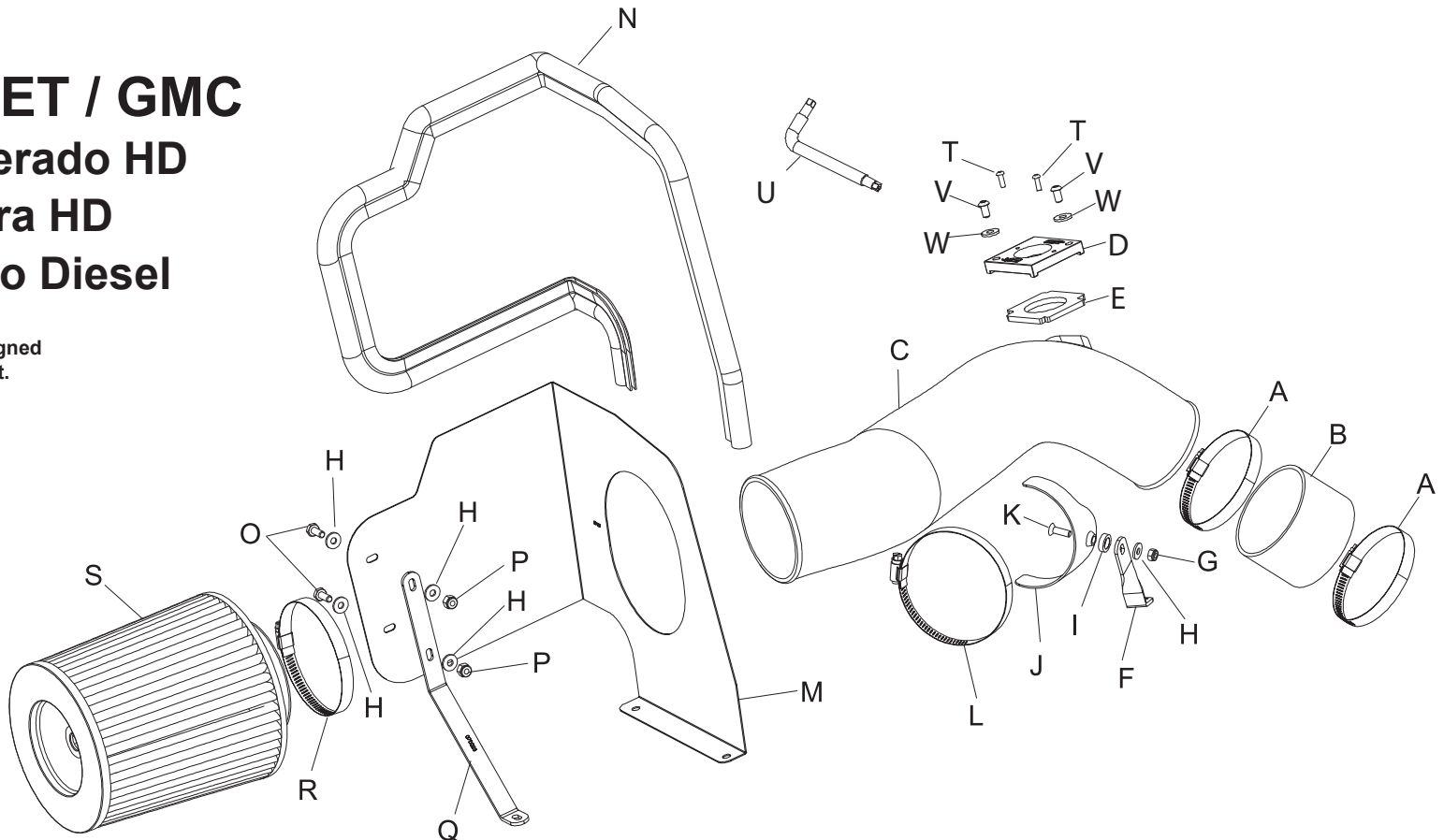
**2001-04 Sierra HD**

**V8-6.6L Turbo Diesel**

**NOTE:** This kit was not designed to fit vehicles with a body lift.

**TOOLS NEEDED:**

- 8mm socket
- Ratchet
- Short extension
- Flat blade screwdriver
- 7/16" wrench
- 10mm wrench
- T-30 wrench
- 2.5mm allen
- T-20 tamper proof torx



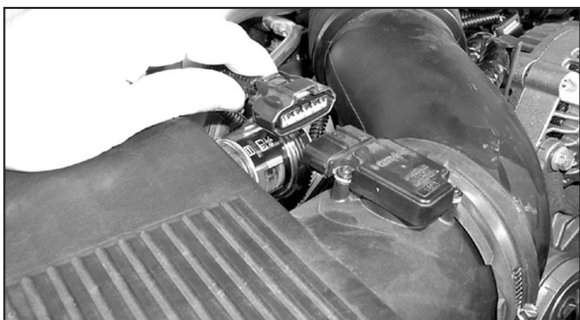
**PARTS LIST:**

| Description       | Qty. | Part #   | Description              | Qty. | Part # | Description             | Qty. | Part #  |
|-------------------|------|----------|--------------------------|------|--------|-------------------------|------|---------|
| A Hose Clamp #56  | 2    | 08620    | I Washer, Conical, Black | 1    | 08180  | Q Bracket               | 1    | 070025  |
| B Silicone Hose   | 1    | 08456    | J Bracket, Saddle        | 1    | 078855 | R Hose Clamp #72        | 1    | 08671   |
| C Intake Tube     | 1    | 087000-1 | K Bolt, 6mm F/H/A        | 1    | 08376  | S Air Filter            | 1    | RC-4900 |
| D Adaptor         | 1    | 27317    | L Hose Clamp #64         | 1    | 08648  | T Screw, Buttonhead     | 2    | 07726   |
| E Gasket          | 1    | 09074    | M Heat Shield            | 1    | 07457  | U Wrench Torx T20       | 1    | 69801   |
| F Bracket         | 1    | 070022   | N Edge Trim, 50"L        | 1    | 102481 | V Bolt, M6 X 1 X 16mm   | 2    | 07730   |
| G Nut, 6mm Nylock | 1    | 07553    | O Bolt, 1/4-20 x 5/8     | 2    | 08315  | W Washer, 1/4" Lock, ZN | 2    | 08198   |
| H Washer, 1/4"ID  | 5    | 08275    | P Nut, 1/4-20 Nylock     | 2    | 07517  |                         |      |         |

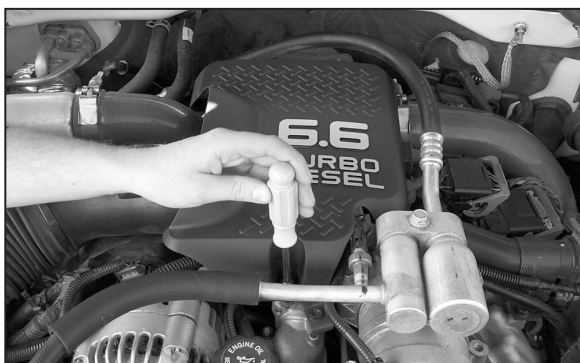
**NOTE: FAILURE TO FOLLOW INSTALLATION INSTRUCTIONS AND NOT USING THE PROVIDED HARDWARE MAY DAMAGE THE INTAKE TUBE, THROTTLE BODY AND ENGINE.**

**TO START:**

1. Turn off the ignition and disconnect the negative battery cable.  
**NOTE: Disconnecting the negative battery cable erases pre-programmed electronic memories. Write down all memory settings before disconnecting the negative battery cable. Some radios will require an anti-theft code to be entered after the battery is reconnected. The anti-theft code is typically supplied with your owner's manual. In the event your vehicles anti-theft code cannot be recovered, contact an authorized dealership to obtain your vehicles anti-theft code.**



2. Disconnect the mass air sensor electrical connection.



3. On 2001 models, remove the 8mm bolt that retains the engine cover, then remove cover.



4. On 2002 models, remove the torx bolt from intake resonator as shown.



5. Loosen hose clamp at intake resonator then remove resonator from vehicle.



6. Loosen hose clamp at intake manifold and airbox, then remove complete air intake tube.



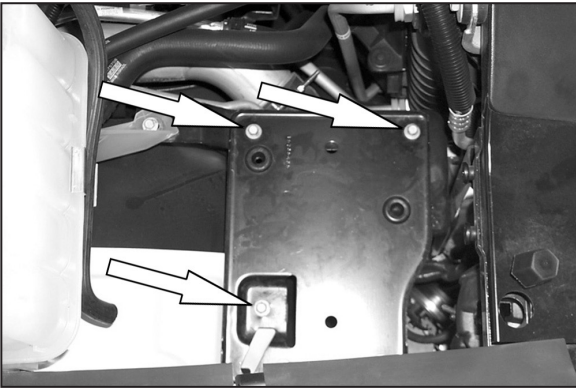
7. Pull firmly upwards on stock airbox to remove from vehicle.  
**NOTE: K&N Engineering, Inc., recommends that customers do not discard factory air intake.**



8. Apply the provided trim seal to the heat shield assembly as show. Trim if necessary.



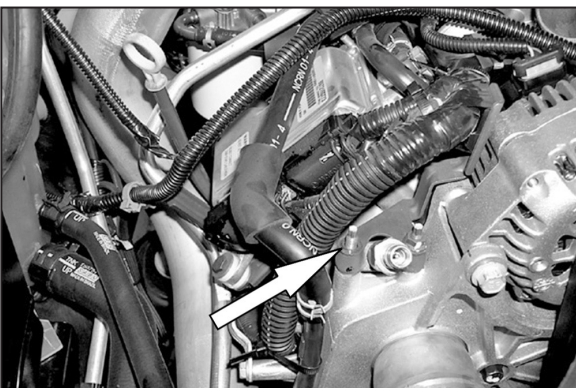
9. Install bracket onto heat shield as shown. Do not tighten completely.



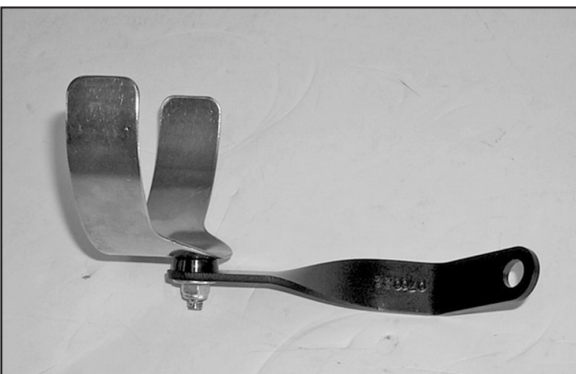
10. Remove the three bolts from the stock airbox mounting tray.



11. Mount the heat shield onto the airbox mounting tray and secure with the three bolts removed in step 10.



12. Remove nut from the Schrader valve as shown.



13. Install saddle bracket onto new bracket as shown.



14. Secure bracket onto stud and secure bracket with nut that was removed in step 12. Do not tighten completely.



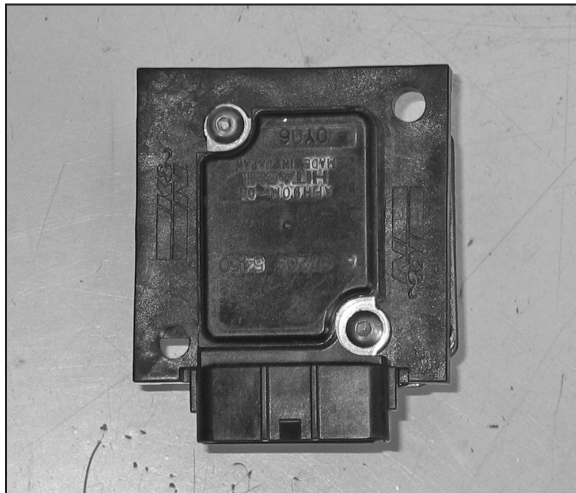
15. Loosen and remove the two torx screws that retain the mass air sensor with the provided torx wrench, then remove sensor.



16. Remove the restriction gauge and grommet from the stock airbox assembly as shown.



17a. Install the provided gasket onto the K&N® mass air sensor adaptor as shown.

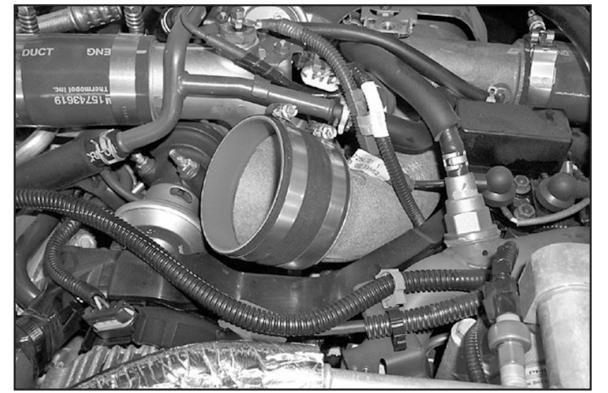


17b. Install the mass air sensor mounting adaptor and secure with the hardware provided.

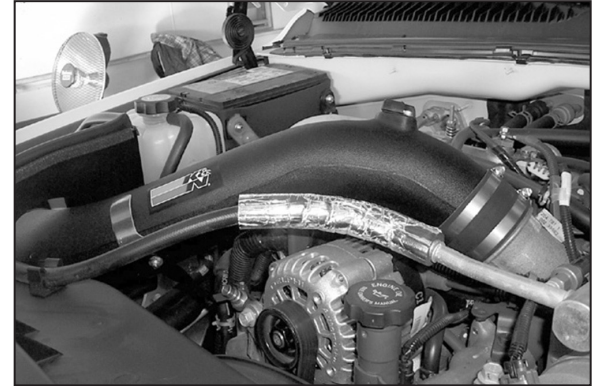


18. Install the mass air sensor assembly into the K&N® intake tube as shown and secure with hardware provided.

**NOTE: Be sure to install the assembly as shown in the photo, with the electrical connection pointed down.**



19. Install silicone hose onto intake manifold with provided hose clamps.



20. Secure the K&N® intake tube to the intake manifold with the provided hose clamp.



21. Install saddle bracket onto intake tube with hose clamp provided. Adjust for best fit and tighten all hardware.



22. Adjust heat shield and bracket for necessary clearance, then tighten all hardware completely.



23. Install grommet onto filter as shown.



24. Install filter restriction gauge onto air filter as shown.



25. Install the K&N® air filter onto intake tube as shown then tighten completely.



26. Reconnect the mass air sensor electrical connection as shown.

27. On 2001 models, re-install engine cover that was removed in step #3.



28. Reconnect the vehicle's negative battery cable. Double check to make sure everything is tight and properly positioned before starting the vehicle.

29. The C.A.R.B. exemption sticker, (attached), must be visible under the hood so that an emissions inspector can see it when the vehicle is required to be tested for emissions. California requires testing every two years, other states may vary.

30. **NOTE:** Most General Motors vehicles have the Vehicle Emissions Certification Information (VECI) label affixed to the air filter box. In order to be compliant with California emissions laws, the label **MUST** remain in the engine compartment. If the Vehicle Emission Control Information label is removed during modification, a new replacement label must be obtained and installed in a readily visible position in the engine compartment. The label shall not be affixed to any equipment which is easily detached from the vehicle. We recommend that the label is affixed to the underside of the hood adjacent to the hood latch. The label is Vehicle Identification Number dependent and can be ordered from the vehicle dealership. In order to receive the proper decal please bring your VIN with you. Failure to have the VECI under the hood may result in failure of a pre-registration smog test.

31. It will be necessary for all K&N® high flow intake systems to be checked periodically for realignment, clearance and tightening of all connections. Failure to follow the above instructions or proper maintenance may void warranty.

#### ROAD TESTING:

1. Start the engine with the transmission in neutral or park, and the parking brake engaged. Listen for air leaks or odd noises. For air leaks secure hoses and connections. For odd noises, find cause and repair before proceeding. This kit will function identically to the factory system except for being louder and much more responsive.

2. Test drive the vehicle. Listen for odd noises or rattles and fix as necessary.

3. If road test is fine, you can now enjoy the added power and performance from your kit.

4. K&N Engineering, Inc., requires cleaning the intake system's air filter element every 100,000 miles. When used in dusty or off-road environments, our filters will require cleaning more often. We recommend that you visually inspect your filter once every 25,000 miles to determine if the screen is still visible. When the screen is no longer visible some place on the filter element, it is time to clean it. To clean and re-oil, purchase our filter Recharger® service kit, part number 99-5050 or 99-5000 and follow the easy instructions.