



INSTALLATION INSTRUCTIONS

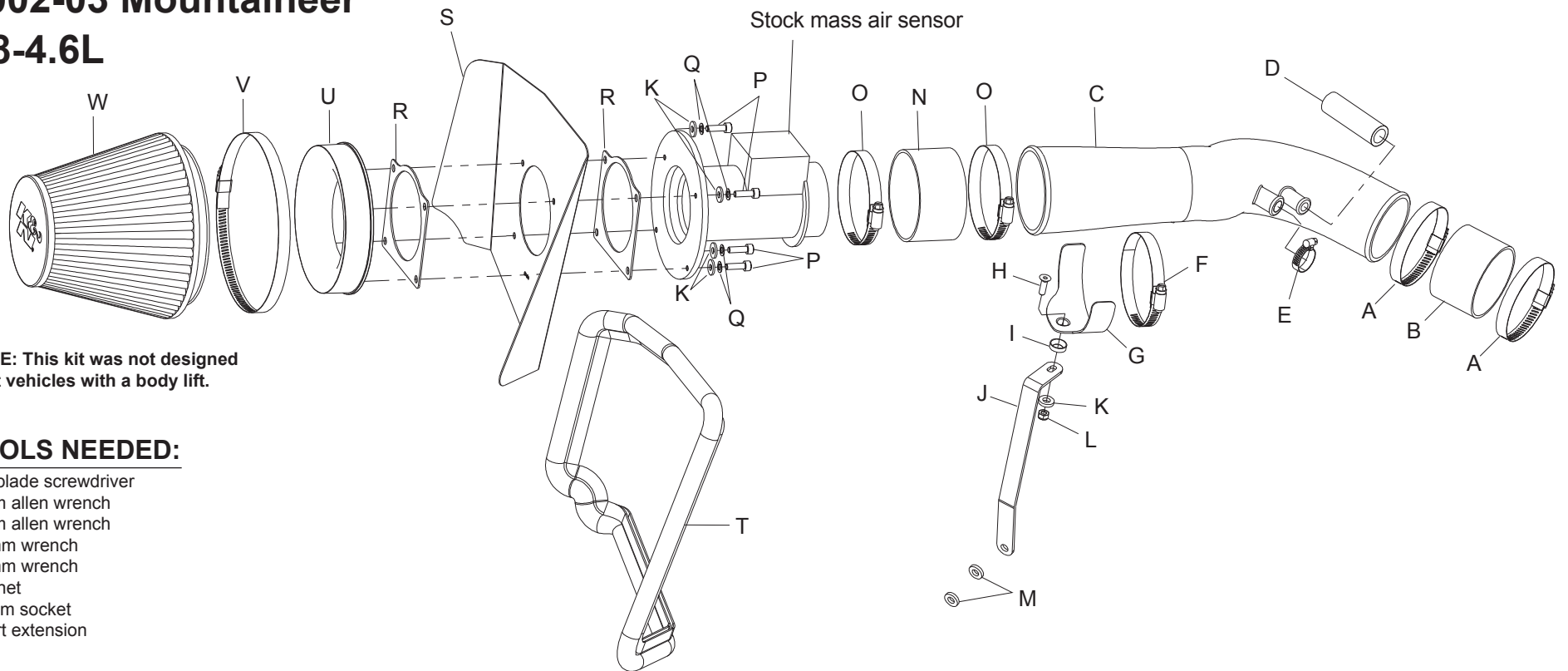
57-2539

FORD / MERCURY

2002-03 Explorer

2002-03 Mountaineer

V8-4.6L



NOTE: This kit was not designed to fit vehicles with a body lift.

TOOLS NEEDED:

- flat blade screwdriver
- 5mm allen wrench
- 4mm allen wrench
- 10mm wrench
- 13mm wrench
- ratchet
- 11mm socket
- short extension

PARTS LIST:

Description	Qty.	Part #	Description	Qty.	Part #	Description	Qty.	Part #
A Hose Clamp #48	2	08601	I Washer, Conical, Nylon, Blk.	1	08180	Q Washer 6mm Wave	4	08174
B Silicone Hose	1	08434	J Bracket Lg. "L"	1	07156	R Mass Air Sensor Gasket	2	09984
C Intake Tube (CL)	1	087061	K Washer 1/4"ID x 5/8"OD	5	08275	S Heat Shield	1	07484
D Silicone Hose 5/8"ID x 3"L	1	08464	L Nut 6mm Nylock Hexhead	1	07553	T Edge Trim 44"L	1	102486
E Hose Clamp #10	1	08411	M Washer 5/16"ID x 5/8"OD	2	08276	U Filter Adapter #250	1	08785
F Hose Clamp #52	1	08610	N Silicone Hose	1	08630	V Hose Clamp #104	1	08697
G Saddle Bracket	1	078855	O Hose Clamp #56	2	08620	W Air Filter	1	RF-1048
H Bolt 6mm-1.00x20mm F/H/A	1	08376	P Bolt 6mm-1.00 x 20mm Allen	4	07852			

NOTE: FAILURE TO FOLLOW INSTALLATION INSTRUCTIONS AND NOT USING THE PROVIDED HARDWARE MAY DAMAGE THE INTAKE TUBE, THROTTLE BODY AND ENGINE.

TO START:

1. Turn off the ignition and disconnect the negative battery cable.
NOTE: Disconnecting the negative battery cable erases pre-programmed electronic memories. Write down all memory settings before disconnecting the negative battery cable. Some radios will require an anti-theft code to be entered after the battery is reconnected. The anti-theft code is typically supplied with your owner's manual. In the event your vehicles' anti-theft code cannot be recovered, contact an authorized dealership to obtain your vehicles anti-theft code.



2. Disconnect the mass air sensor electrical connection.



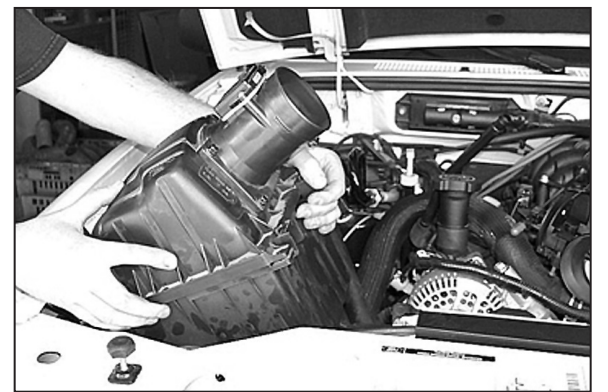
3. Loosen and remove the two 11mm nuts that secure the engine cover, then remove the cover as shown.



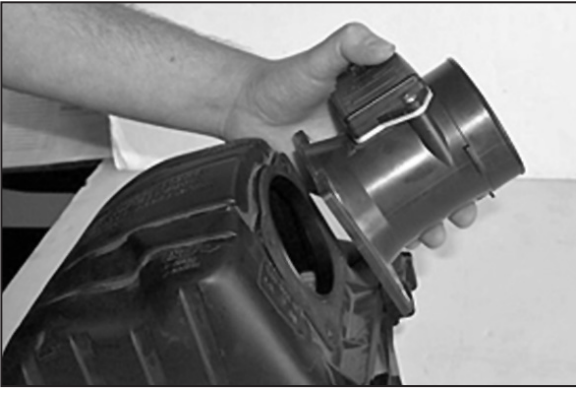
4. Remove the crankcase vent hose and idle bypass hose and cruise control cable from the stock intake tube as shown.



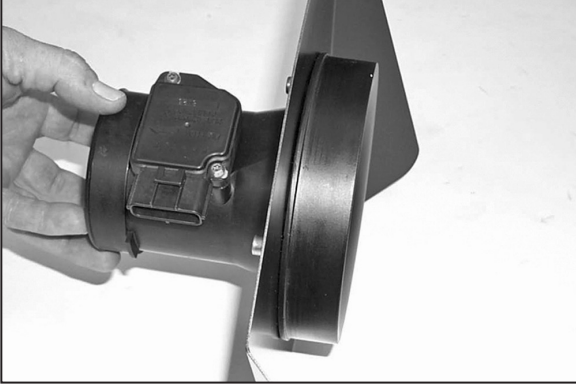
5. Loosen the hose clamp at the throttle body and at the mass air sensor, then remove the stock air intake tube as shown.



6. Using a screwdriver, pry up the bottom of the air cleaner to release the air cleaner from the stock grommets, then remove the air cleaner assembly as shown.
NOTE: K&N Engineering, Inc., recommends that customers do not discard factory air intake.



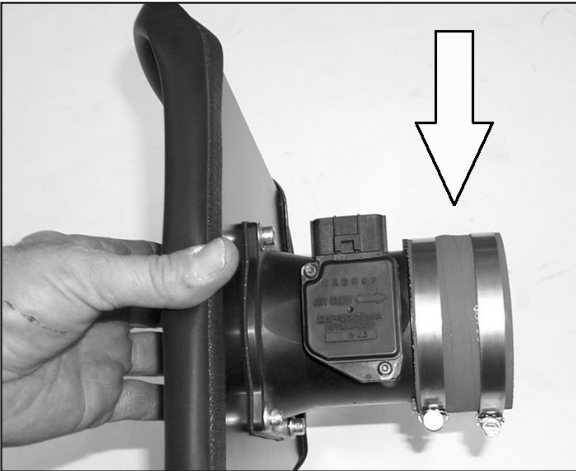
7. Loosen and remove the four bolts that secure the mass air sensor, then remove the mass air sensor as shown.



8. Assemble the mass air adapter, gaskets, heat shield and mass air sensor as shown.



9. Apply the trim seal to the heat shield assembly as shown. Trim if needed.



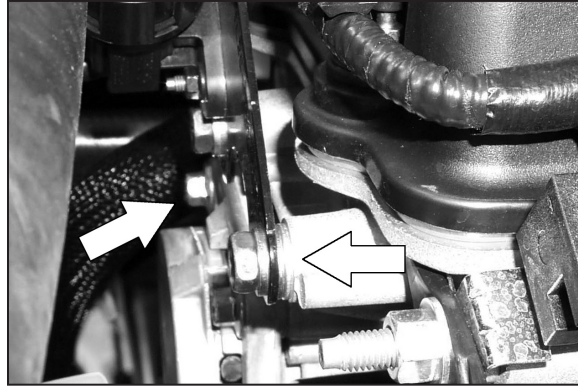
10. Assemble the silicone hose (08630) and the hose clamps onto the heat shield assembly as shown.



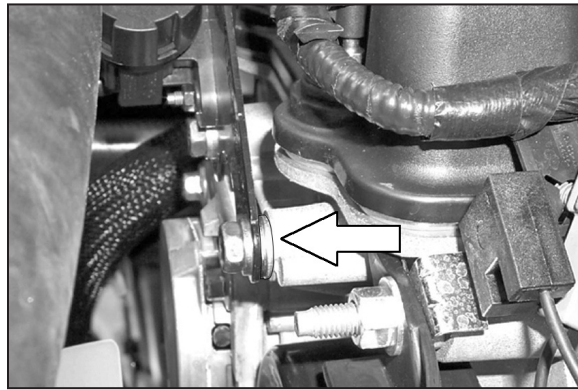
11. Install the silicone hose (08434) and the hose clamps onto the throttle body as shown.



12. Using the provided hardware, assemble the saddle bracket assembly as shown.



13. Remove the two bolts with a 13mm wrench that secure the purge solenoid to the front of the cylinder head as shown.



14. Install the new bracket between the cylinder head and purge solenoid bracket then install the two provided washers behind the purge solenoid bracket (see arrow), then secure with the two factory bolts.



15. Install the silicone hose onto the K&N® intake tube as shown.



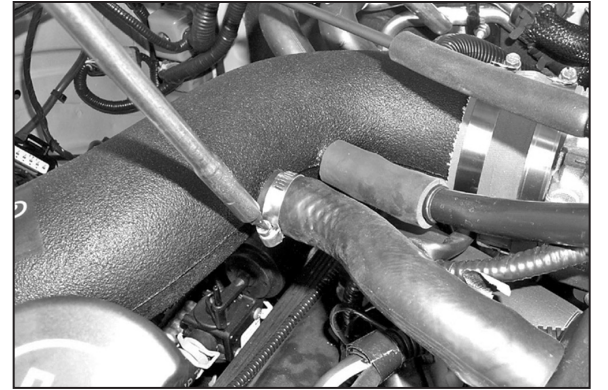
16. Install the K&N® intake tube onto the throttle body then line it up with the saddle bracket assembly as shown.



17. Secure the intake tube to the saddle bracket assembly with the provided hose clamp.



18. Remove the factory hose mender from vent hose as shown.



19. Re-connect the crankcase vent hose and the idle bypass hose then secure with the provided hose clamp to the K&N® intake tube as shown.



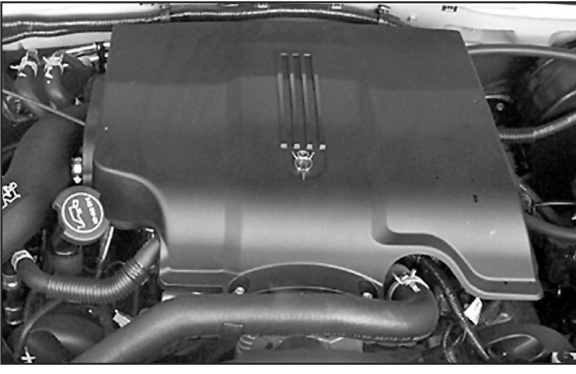
20. Install the K&N® air filter onto the heat shield assembly as shown.



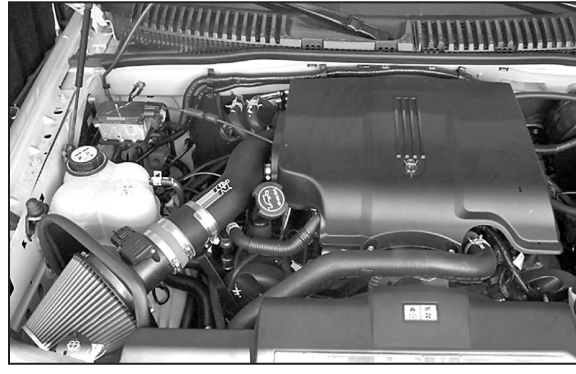
21. Install the heat shield assembly onto the K&N® intake tube and tighten the hose clamp as shown. **NOTE: Adjust heat shield for best clearance before tightening.**



22. Re-connect the mass air sensor electrical connection as shown.



23. Re-install the engine cover then secure with the two 11mm nuts that were removed in step 3.



24. Reconnect the vehicle's negative battery cable. Double check to make sure everything is tight and properly positioned before starting the vehicle.

25. The C.A.R.B. exemption sticker, (attached), must be visible under the hood so that an emissions inspector can see it when the vehicle is required to be tested for emissions. California requires testing every two years, other states may vary.

26. It will be necessary for all K&N® high flow intake systems to be checked periodically for realignment, clearance and tightening of all connections. Failure to follow the above instructions or proper maintenance may void warranty.

ROAD TESTING:

1. Start the engine with the transmission in neutral or park, and the parking brake engaged. Listen for air leaks or odd noises. For air leaks secure hoses and connections. For odd noises, find cause and repair before proceeding. This kit will function identically to the factory system except for being louder and much more responsive.

2. Test drive the vehicle. Listen for odd noises or rattles and fix as necessary.

3. If road test is fine, you can now enjoy the added power and performance from your kit.

4. K&N Engineering, Inc., requires cleaning the intake system's air filter element every 100,000 miles. When used in dusty or off-road environments, our filters will require cleaning more often. We recommend that you visually inspect your filter once every 25,000 miles to determine if the screen is still visible. When the screen is no longer visible some place on the filter element, it is time to clean it. To clean and re-oil, purchase our filter Recharger® service kit, part number 99-5050 or 99-5000 and follow the easy instructions.