



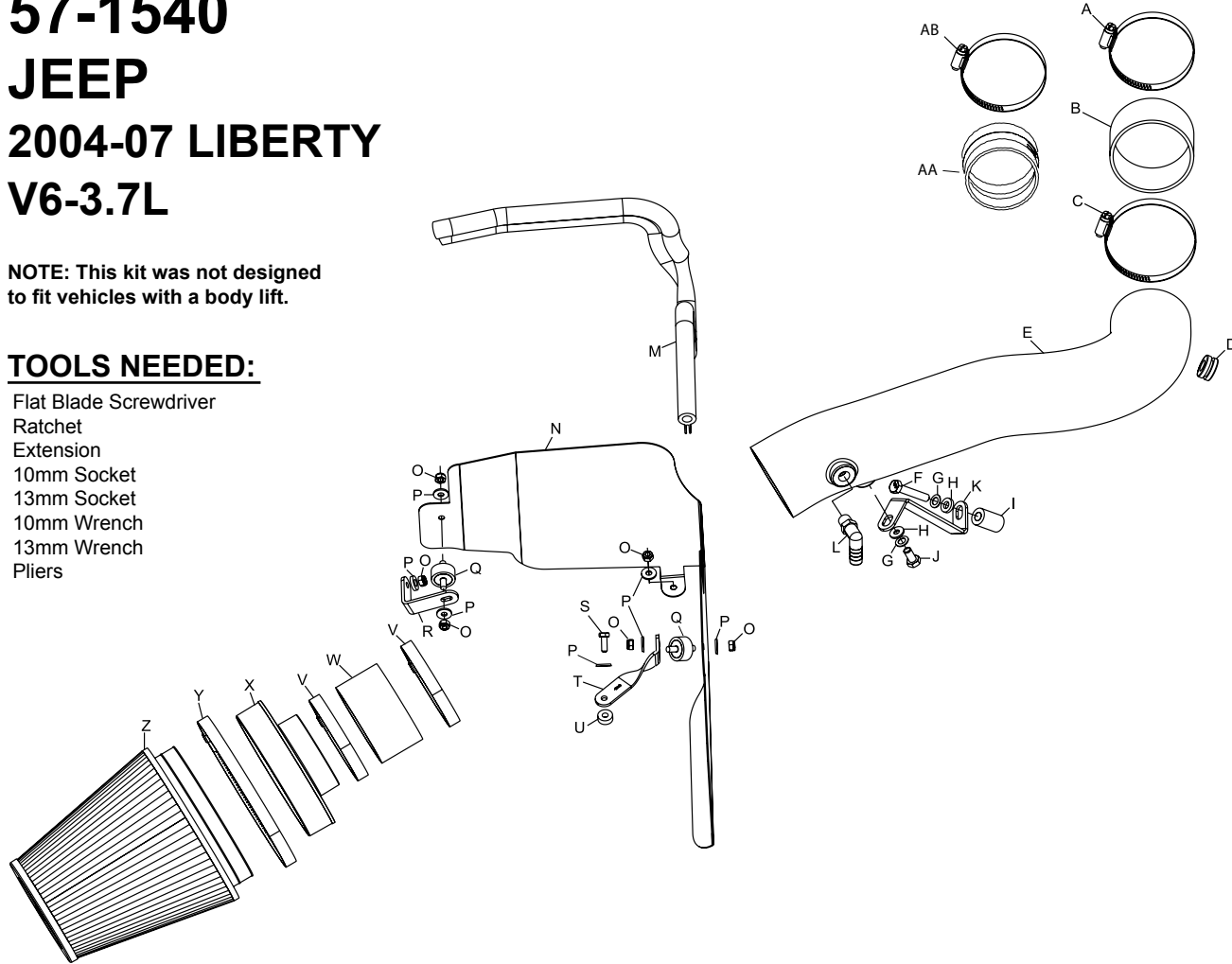
# INSTALLATION INSTRUCTIONS

## 57-1540 JEEP 2004-07 LIBERTY V6-3.7L

NOTE: This kit was not designed to fit vehicles with a body lift.

### TOOLS NEEDED:

- Flat Blade Screwdriver
- Ratchet
- Extension
- 10mm Socket
- 13mm Socket
- 10mm Wrench
- 13mm Wrench
- Pliers



### PARTS LIST:

	Description	Qty.	Part #
A	Hose Clamp #48	1	08601
B	Hose; 3.0"ID x 2.0"L Silicone	1	08690
C	Hose Clamp #52	1	08610
D	Grommet; 1.0"OD x 1/2"ID	1	08064
E	Intake Tube	1	087128
F	Bolt; 8mm-1.75 x 45mm hex	1	07745
G	Washer; 8mm Wave	2	08239
H	Washer; 5/16"ID x 5/8"OD,	2	08276
I	Spacer; 3/8"IDx3/4"ODx1.175"L	1	06547
J	Bolt; 8mm-1.25 x 16mm, hex	1	07844
K	Bracket "Z"	1	010064
L	Vent; 1/4"NPT, 1/2" Barb, 90°	1	08110
M	Edge Trim	1	102489
N	Heat Shield	1	07469
O	Nut; 6mm Nylock	6	07553
P	Washer; 1/4"ID x 5/8"OD, Flat	6	08275
Q	Rubber Mounted Stud	2	07027
R	Bracket; "L"	1	070932
S	Bolt; 6mm-1.00 x 16mm	1	07703
T	Bracket; Twist	1	07139
U	Spacer; .625"IDx.25"ODx.250"L	1	06555
V	Hose Clamp #56	2	08620
W	Hose; 3.5"ID x 2.0"L Silicone	1	08630
X	Adapter #380	1	21512
Y	Hose Clamp #104	1	08697
Z	Air Filter	1	RF-1048
AA	Hose; 2-3/4" to 3-1/4" x 2"L	1	084034
AB	Hose Clamp #40	1	08554

**NOTE: FAILURE TO FOLLOW INSTALLATION INSTRUCTIONS AND NOT USING THE PROVIDED HARDWARE MAY DAMAGE THE INTAKE TUBE, THROTTLE BODY AND ENGINE.**

### TO START:

1. Turn off the ignition and disconnect the negative battery cable.

**NOTE: Disconnecting the negative battery cable erases pre-programmed electronic memories. Write down all memory settings before disconnecting the negative battery cable. Some radios will require an anti-theft code to be entered after the battery is reconnected. The anti-theft code is typically supplied with your owner's manual. In the event your vehicles' anti-theft code cannot be recovered, contact an authorized dealership to obtain your vehicles anti-theft code.**



2. Release the locking tap on the air temperature sensor electrical connection, and then disconnect the electrical connection from the air temperature sensor.



3. Loosen the hose clamp that secures the intake tube to the throttle body, and then disconnect the intake tube from the throttle body.



4. Disconnect the stock crankcase vent hose from the airbox as shown.



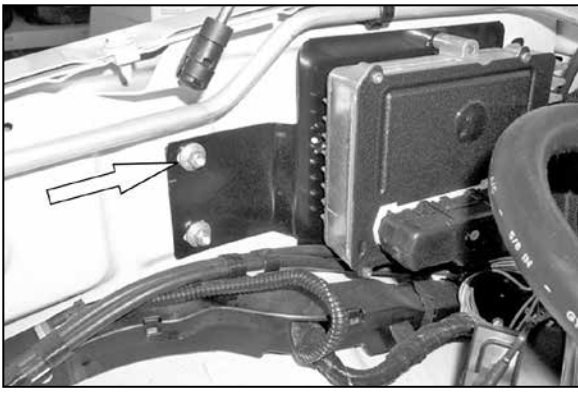
5. Firmly lift up to disengage the airbox from the retaining grommets and remove the airbox from the vehicle.

**NOTE: K&N Engineering, Inc., recommends that customers do not discard factory air intake.**



6. Assemble "L" bracket and rubber mounted stud as shown.





7. Remove nut from inner fender on vehicles that come equipped with a TCM.

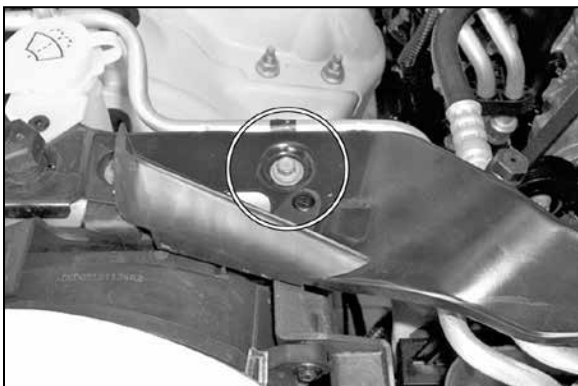


8. Secure "L" bracket to inner fender with the nut that was removed in the previous step.



9. On vehicles that do not come with TCM's mount "L" bracket onto existing stud with the provided hardware.

**NOTE: Make sure to install two washers onto stud before mounting bracket.**



10. Remove the 6mm bolt from core support.

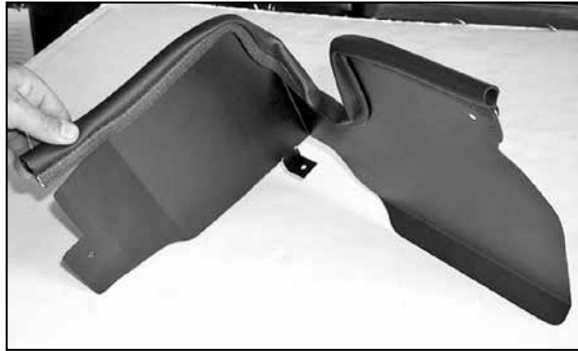


11. Assemble the bracket and rubber mounted stud as shown.

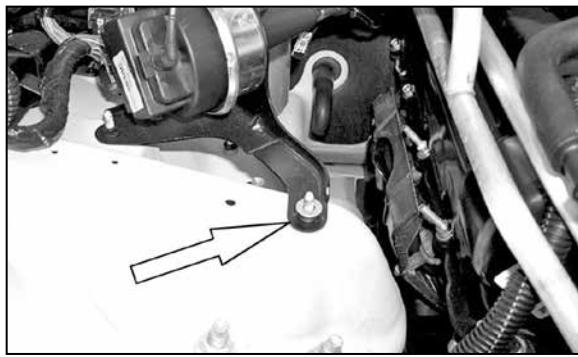


12. Install the bracket onto core support with the provided hardware as shown.

**NOTE: Make sure 1/4 spacer is placed under new bracket.**



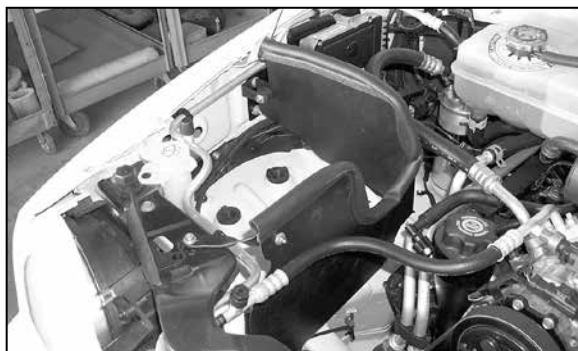
13. Install edge trim onto heat shield as shown. Trim if needed.



14. Install the provided 1/4 washer onto existing nut that retains the cruise control bracket to vehicle.



15. Vehicles that do not come equipped with cruise control, install the provided spacer and washer onto the stud as shown.



16. Install heat shield onto the vehicle with the provided hardware as shown.



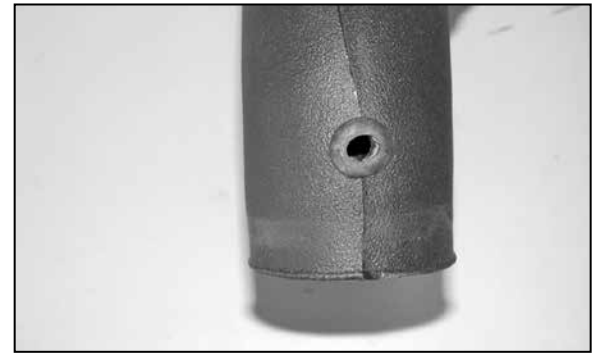
17. Remove the A/C compressor-mounting bolt.



18. On 2006 and earlier vehicles, install the provided silicone hose (08690) onto the throttle body with the provided hose clamps as shown.



18a. On 2007 vehicles with a plastic throttle body, install the supplied silicone hose (084034) onto the throttle body and secure with the provided hose clamps as shown.



19. Install the provided grommet in the K&N® intake tube as shown.



20. Remove the air temperature sensor from the stock [intake tube](#) as shown.



21. Install the air temperature sensor into the grommet in the K&N® intake tube as shown.



22. Install the 90° NPT fitting into the K&N® intake tube as shown.  
**NOTE: Plastic NPT fittings are easy to cross thread. Install the vent fitting "hand" tight, then turn it two complete turns with a wrench.**





23. Install the K&N® intake tube into the silicone hose at throttle body, position the tube mounting bracket to line up on the A/C pump with the bolt removed in step #17. Then secure bracket to intake tube with the provided hardware. Then tighten the hose clamp at the throttle body and the AC mounting bolt removed in step #17.



24. On vehicles not equipped with A/C, use the spacer and bolt provided to secure the mounting bracket to the engine.



25. Rotate crankcase vent hose, align with NPT fitting, and cut where shown.



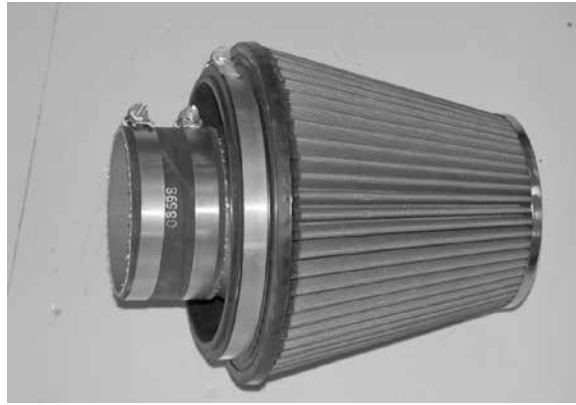
26. Install cut crankcase vent hose onto the NPT fitting as shown.



27. Reconnect the air temperature sensor electrical connection as shown.



28. Install the filter adapter into the air filter as shown, secure with the provided hose clamp.  
**NOTE: Drycharger® air filter wrap; part # RF-1048DK is available to purchase separately.**



29. Install the silicone (08630) onto the air filter assembly and secure with the provided hose clamp.



30. Install the air filter assembly onto the K&N® intake tube as shown and secure with the provided hose clamp.



31. Reconnect the vehicle's negative battery cable. Double check to make sure everything is tight and properly positioned before starting the vehicle.

32. The C.A.R.B. exemption sticker, (attached), must be visible under the hood so that an emissions inspector can see it when the vehicle is required to be tested for emissions. California requires testing every two years, other states may vary.

33. It will be necessary for all K&N® high flow intake systems to be checked periodically for realignment, clearance and tightening of all connections. Failure to follow the above instructions or proper maintenance may void warranty.

#### ROAD TESTING:

1. Start the engine with the transmission in neutral or park, and the parking brake engaged. Listen for air leaks or odd noises. For air leaks secure hoses and connections. For odd noises, find cause and repair before proceeding. This kit will function identically to the factory system except for being louder and much more responsive.

2. Test drive the vehicle. Listen for odd noises or rattles and fix as necessary.

3. If road test is fine, you can now enjoy the added power and performance from your kit.

4. K&N Engineering, Inc., requires cleaning the intake system's air filter element every 100,000 miles. When used in dusty or off-road environments, our filters will require cleaning more often. We recommend that you visually inspect your filter once every 25,000 miles to determine if the screen is still visible. When the screen is no longer visible some place on the filter element, it is time to clean it. To clean and re-oil, purchase our filter Recharger® service kit, part number 99-5050 or 99-5000 and follow the easy instructions.

**50-STATE STREET LEGAL**  
**K&N CARB EXEMPT K&N**