



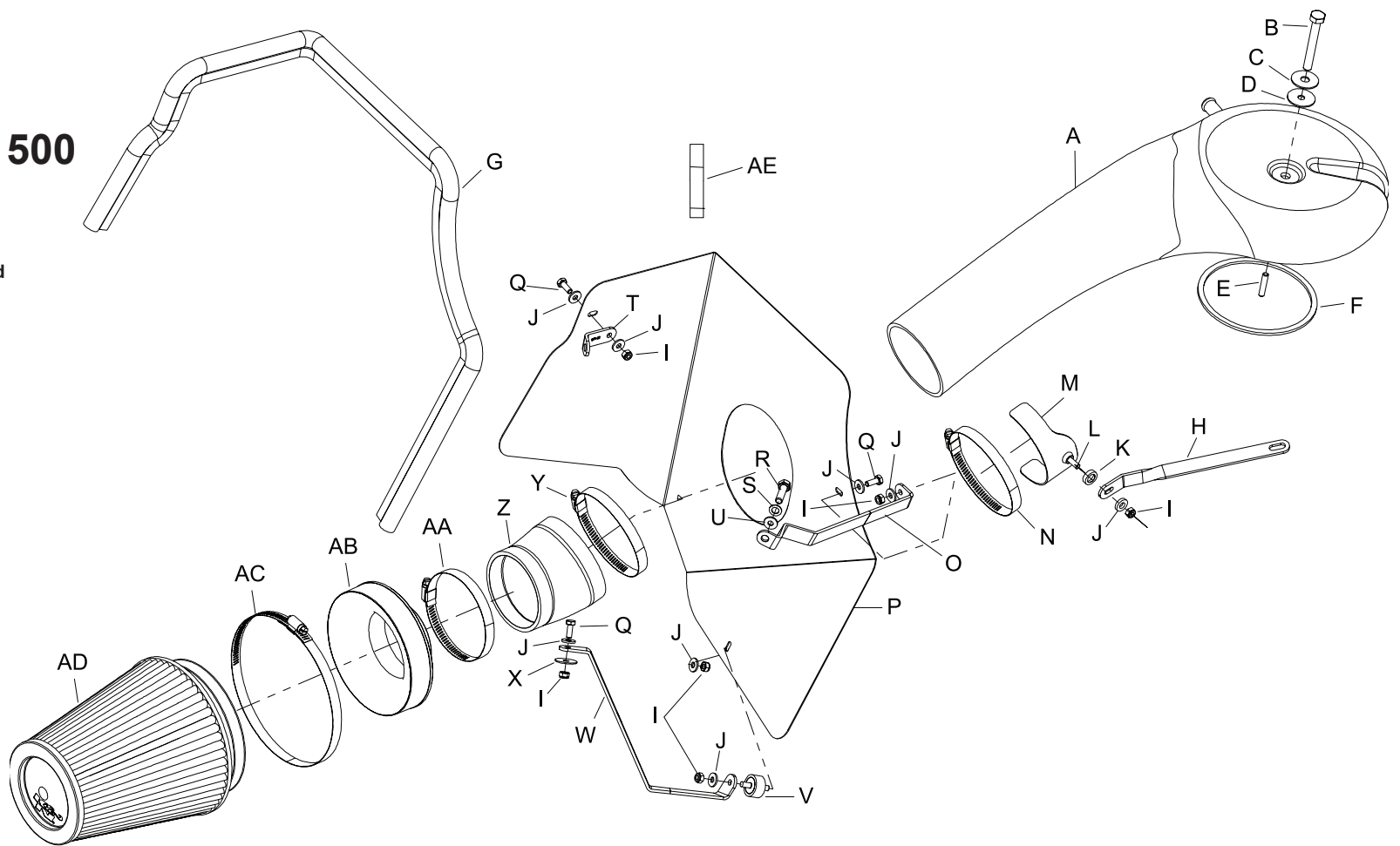
INSTALLATION INSTRUCTIONS

57-1530-1
DODGE
2002-03 Ram 1500
V8-5.9L

NOTE: This kit was not designed to fit vehicles with a body lift.

TOOLS NEEDED:

- Flat blade screwdriver
- Ratchet
- 1/2" socket
- 8mm socket
- 10mm socket
- 13mm socket
- 10mm wrench
- 5/8" wrench
- 1/8" allen wrench



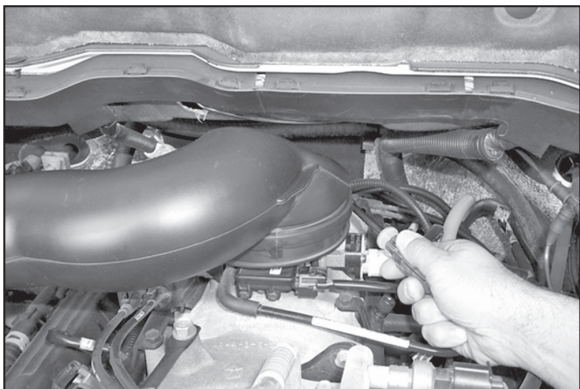
PARTS LIST:

Description	Qty.	Part #	Description	Qty.	Part #	Description	Qty.	Part #
A intake tube (p)	1	087141	L bolt 6mm-1.00 x 20mm f/h/a	1	08376	V stud; m6-1.00 m/m; rubber mntd	1	07027
B nut extension	1	08241	M saddle bracket	1	078855	W bracket	1	07146
C washer 1.25od x .40id	1	08126	N hose clamp #60	1	08624	X washer, 1"D X 1/4 hole fender	1	08160
D washer 1.25 x .30 x .10 rubber	1	21708	O bracket	1	07147	Y hose clamp #64	1	08648
E screw 1/4-20 x 1-1/2" I set	1	07800	P heat shield	1	07477	Z hose; radiused, step intake	1	08749
F gasket; 4bbl carb. 1/8" neoprene	1	09989	Q bolt; m6-1.00 x 16mm hexhead	3	07703	AA hose clamp #56	1	08620
G edge trim 39"	1	102496	R bolt; 8mm-1.25 x 30mm, hexhead	1	07821	AB filter adapter #380	1	21512-1
H bracket; twist	1	070840	S washer 8mm spring (wave)	1	08239	AC hose clamp #104	1	08697
I nut nylock 6mm	6	07553	T bracket	1	07145	AD Air Filter	1	RF-1020
J washer 1/4" id x 5/8" od	8	08275	U washer 5/16" id x 5/8" od flat	1	08276	AE Thread Locker	1	482
K washer conical nylon black	1	08180						

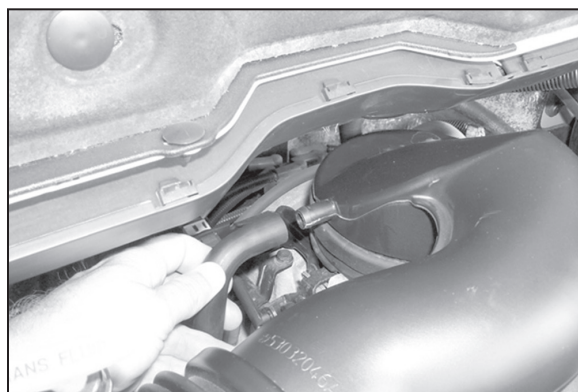
NOTE: FAILURE TO FOLLOW INSTALLATION INSTRUCTIONS AND NOT USING THE PROVIDED HARDWARE MAY DAMAGE THE INTAKE TUBE, THROTTLE BODY AND ENGINE.

TO START:

1. Turn off the ignition and disconnect the negative battery cable.
NOTE: Disconnecting the negative battery cable erases pre-programmed electronic memories. Write down all memory settings before disconnecting the negative battery cable. Some radios will require an anti-theft code to be entered after the battery is reconnected. The anti-theft code is typically supplied with your owner's manual. In the event your vehicles' anti-theft code cannot be recovered, contact an authorized dealership to obtain your vehicles anti-theft code.



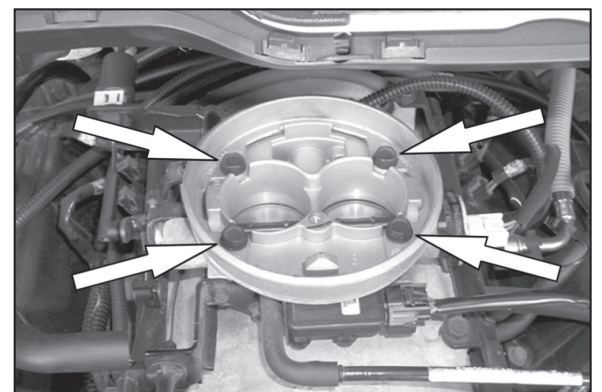
2. Loosen the hose clamp on the air intake tube at the throttle body.



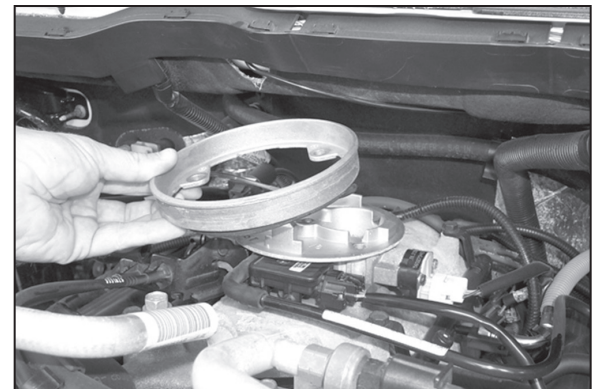
3. Disconnect the crankcase vent line from the air cleaner.



4. Lift up firmly to release the airbox from mounting studs, then remove completely.
NOTE: K&N recommends that you do not discard your factory air intake.



5. Using a 1/2" socket, remove the 4 bolts that retain the throttle body adapter.

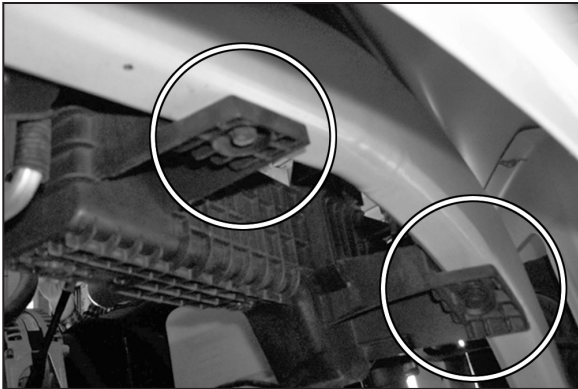


6. Remove the throttle body adapter and factory gasket from throttle body. Then re-install and tighten the 4 bolts that were removed in step 5.

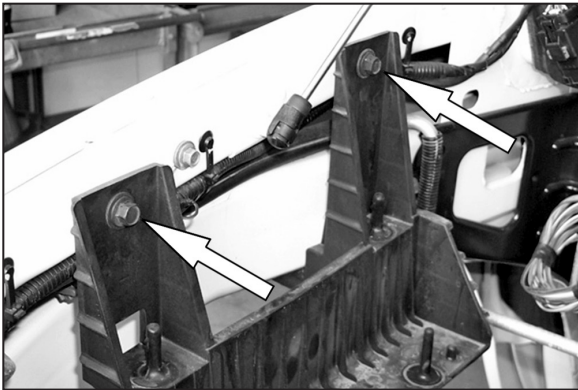


7. Remove the 8 bolts that retain the inner fender to the vehicle. To allow inner fender well to drop for access to the lower airbox mount bolts.

NOTE: Not necessary to remove tire to access these bolts.



8. Use a 13mm wrench to remove the two bolts that retain the lower airbox mount.



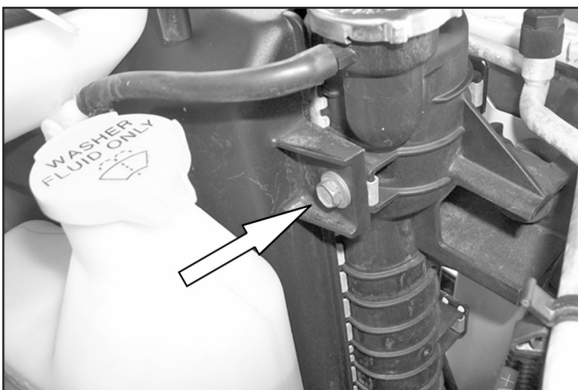
9. Use a 13mm wrench to remove the two bolts that retain the upper airbox mount.



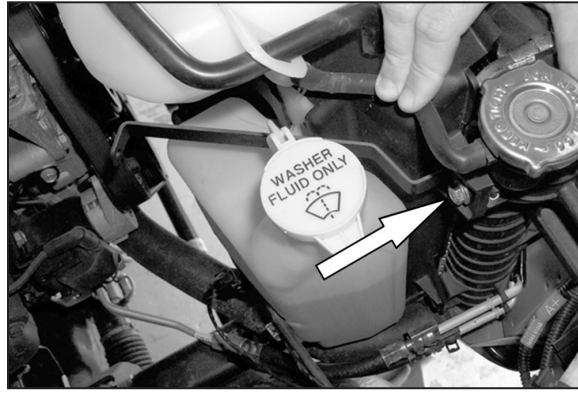
10. Remove the airbox mount as shown.

11. Re-install the inner fender with the bolts that was removed in step 7.

NOTE: 2 of the bolts will not be re-used.

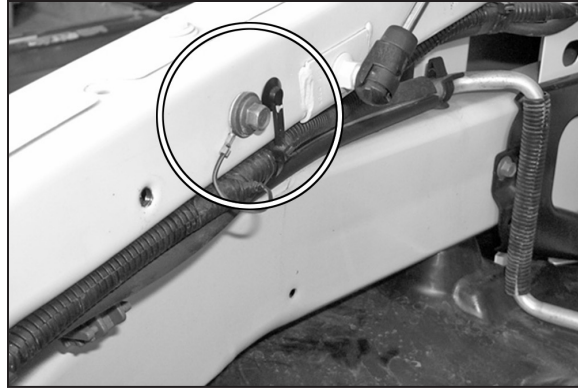


12. Remove the upper radiator shroud bolt.



13. Install the provided bracket onto the radiator shroud with the provided 8mm bolt and washers.

NOTE: Do not tighten completely.



14. Using a 10mm wrench remove the bolt from the inner fender well.



15. Install the provided L bracket onto the inner fender well with the bolt that was removed in step 14.

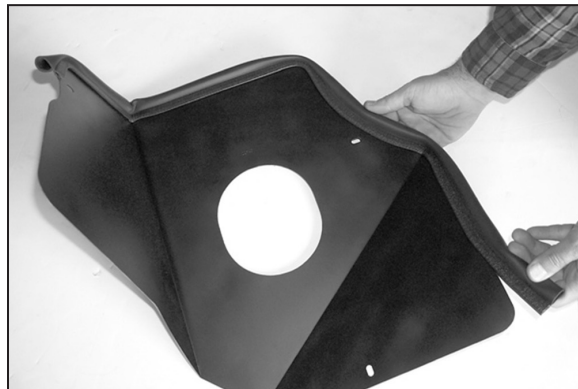


16. Install the provided rubber mounted stud onto the bracket as shown.



17. Install bracket and bumper stud onto inner fender well with hardware provided.

NOTE: Do not tighten at this time.



18. Install edge trim onto heat shield as shown. Trim if needed.



19. Install heat shield onto the vehicle with the provided hardware.

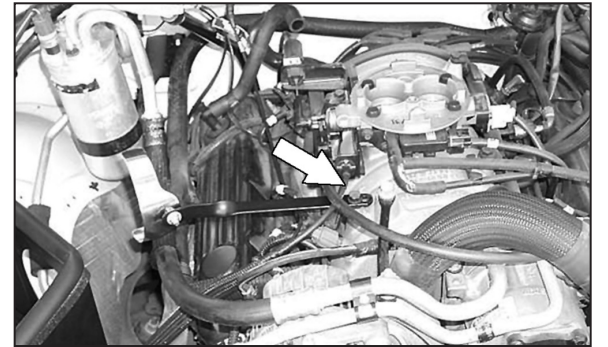
NOTE: Do not tighten completely.



20. Assemble the saddle bracket assembly as shown.

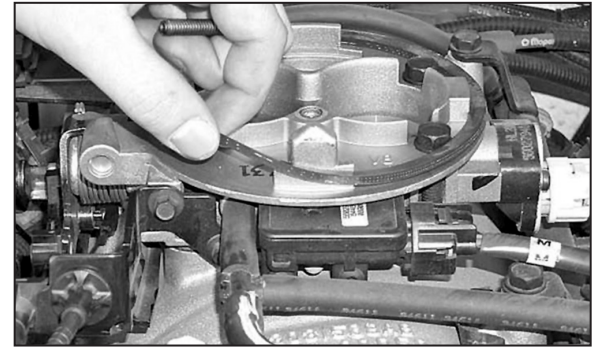


21. Using a 1/2" socket, loosen and remove the bolt that retains the fuel rail bracket.

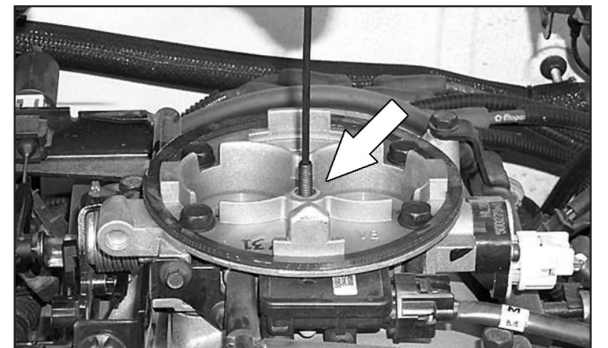


22. Install the saddle bracket assembly using the bolt removed in step #21.

NOTE: Do not tighten completely.

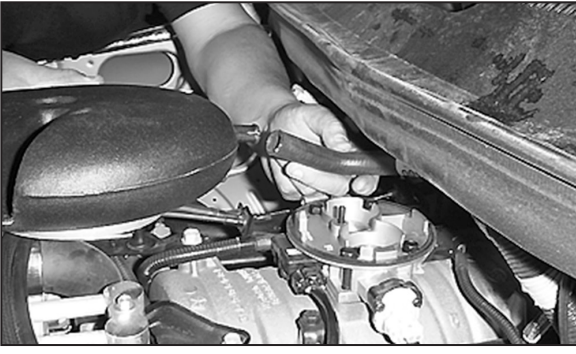


23. Apply the new provided gasket on the throttle body as shown.



24. Install the provided stud into the throttle body as shown.

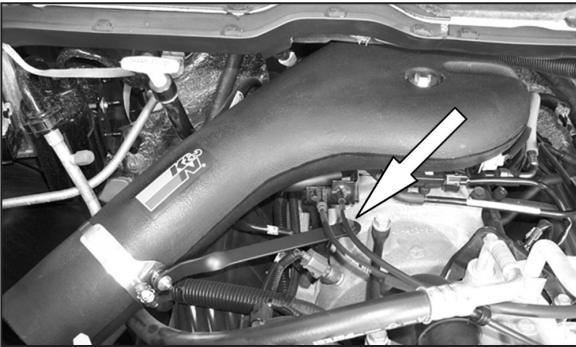
NOTE: Apply two drops of thread locker to the throttle body stud. Failure to follow the above instructions may damage the throttle body.



25. Attach the crankcase vent hose assembly to the vent tube on the intake tube.



26. Install the intake tube onto the throttle body and secure the plenum with the provided nut extension and washer.



27. Secure the saddle bracket to the intake tube with the provided hose clamp as shown. Then tighten the bolt at the fuel rail (see arrow). Position the heat shield for best fit and clearance.



28. Install filter onto the radius filter adapter as shown.



29. Install step hose onto the filter adapter as shown.



30. Install the air filter assembly onto the intake tube and adjust for maximum clearance around the filter.



31. Align the heat shield for best clearance then tighten the 3 brackets.

NOTE: Check clearance between heat shield and overflow bottle and if needed loosen the bolt that retain the overflow bottle and adjust for best clearance.



32. Reconnect the vehicle's negative battery cable. Double check to make sure everything is tight and properly positioned before starting the vehicle.

33. The C.A.R.B. exemption sticker, (attached), must be visible under the hood so that an emissions inspector can see it when the vehicle is required to be tested for emissions. California requires testing every two years, other states may vary.

34. It will be necessary for all K&N® high flow intake systems to be checked periodically for realignment, clearance and tightening of all connections. Failure to follow the above instructions or proper maintenance may void warranty.

ROAD TESTING:

1. Start the engine with the transmission in neutral or park, and the parking brake engaged. Listen for air leaks or odd noises. For air leaks secure hoses and connections. For odd noises, find cause and repair before proceeding. This kit will function identically to the factory system except for being louder and much more responsive.

2. Test drive the vehicle. Listen for odd noises or rattles and fix as necessary.

3. If road test is fine, you can now enjoy the added power and performance from your kit.

4. K&N Engineering, Inc., requires cleaning the intake system's air filter element every 100,000 miles. When used in dusty or off-road environments, our filters will require cleaning more often. We recommend that you visually inspect your filter once every 25,000 miles to determine if the screen is still visible. When the screen is no longer visible some place on the filter element, it is time to clean it. To clean and re-oil, purchase our filter Recharger® service kit, part number 99-5050 or 99-5000 and follow the easy instructions.