



INSTALLATION INSTRUCTIONS

57-1000

BMW 3 Series (E 36)

1997-99 323is

1998-99 323Ci / 328iC

1992-95 325i, 325is / 325Ci

I6-2.5L

1995-99 328Ci

1996-99 328i & 328is

I6-2.8L

1995 M3

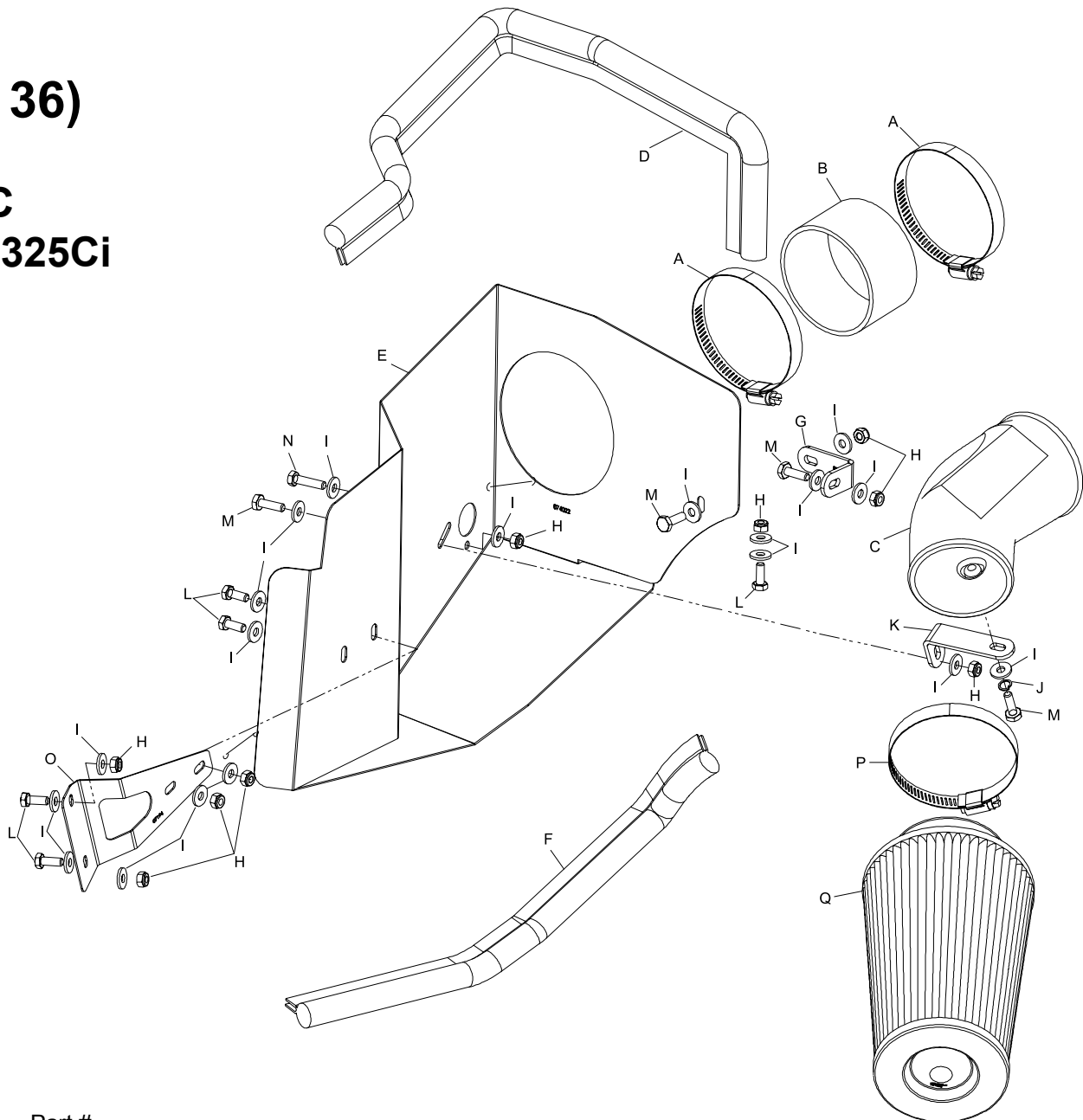
I6-3.0L

1996-99 M3

I6-3.2L

TOOLS NEEDED:

- Flat Blade Screwdriver
- Phillips Screwdriver
- 10mm Wrench
- Ratchet
- Extension
- 10mm Socket



PARTS LIST:

Description	Qty.	Part #	Description	Qty.	Part #	Description	Qty.	Part #
A Hose Clamp #52	2	08610	G Bracket; Small "L"	1	070015	M Bolt; Hex M6-1.00x10mm	4	07863
B Silicone Hose	1	08690	H Nut, Nylock; M6-1.00	9	07553	N Bolt; Hex M6-1.00x25mm	1	07704
C Intake Tube	1	087112	I Washer, flat 1/4"IDx5/8"OD	19	08275	O Bracket	1	07194
D Edge Trim 26"	1	102488	J Washer; Split Lock, 1/4"	1	08198	P Hose Clamp #48	1	08601
E Heat Shield	1	074022	K Bracket, Sm "L"	1	07195	Q Air Filter	1	RC-4690
F Edge Trim 17"	1	102469	L Bolt, Hex M6-100x16mm	5	07703			

NOTE: FAILURE TO FOLLOW INSTALLATION INSTRUCTIONS AND NOT USING THE PROVIDED HARDWARE MAY DAMAGE THE INTAKE TUBE, THROTTLE BODY AND ENGINE.

TO START:

1. Turn off the ignition and disconnect the negative battery cable.

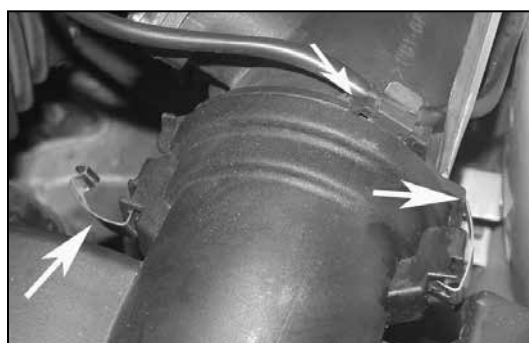
NOTE: Disconnecting the negative battery cable erases pre-programmed electronic memories. Write down all memory settings before disconnecting the negative battery cable. Some radios will require an anti-theft code to be entered after the battery is reconnected. The anti-theft code is typically supplied with your owner's manual. In the event your vehicles' anti-theft code cannot be recovered, contact an authorized dealership to obtain your vehicles anti-theft code.



2. Twist the locking ring on the speed control electrical connection counter clockwise, then separate the wire harness connection from the speed control.



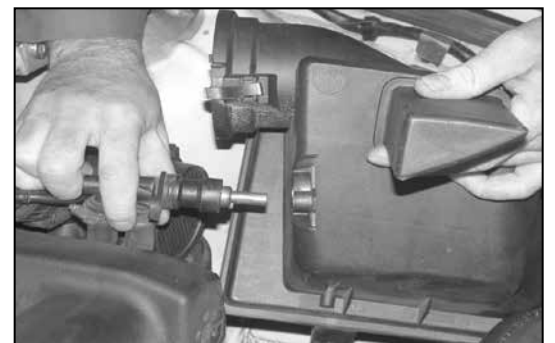
3. Remove the two speed control mounting nuts, then lift and place the speed control unit to the side.



4. Using a flat blade screwdriver, unlock the mass air sensor retaining clips as shown.



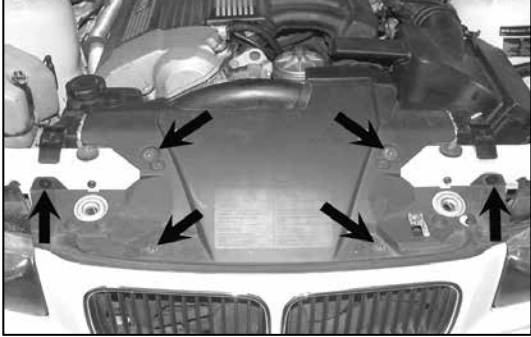
5. Using a flat blade screwdriver, dislodge the fresh air duct from the air box as shown.



6. On vehicles equipped with a throttle body heater, lift the air box partially out to access throttle body heater thermostat. Remove the retaining bolt, then remove the thermostat from the air box as shown.



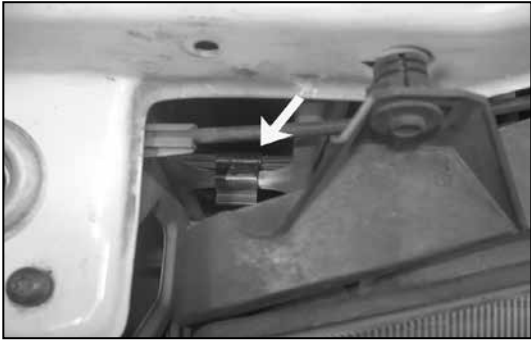
7. Remove the air box from the vehicle as shown.
NOTE: K&N Engineering, Inc., recommends that customers do not discard factory air intake.



8. Remove the four screws shown that secure the radiator cover in place, remove the two plastic retainer clips by pulling up on the center pin.



9. Lift the radiator cover from the rear to unhook from the alternator fresh air supply. Remove the cover from the vehicle.



10. Using a flat blade screwdriver, unhook the fresh air duct behind the head light.



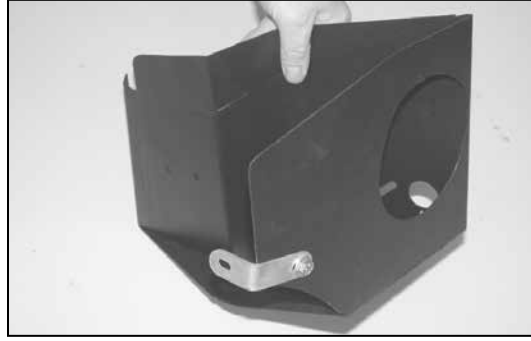
11. Remove the fresh air duct from the vehicle as shown.



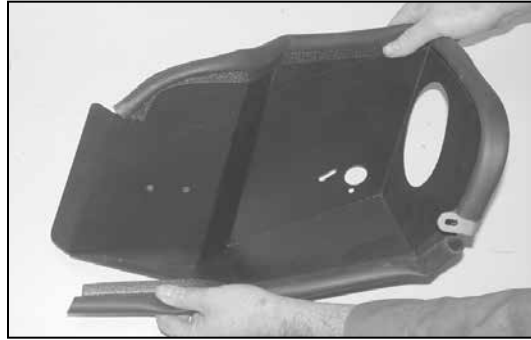
12. Unthread and remove the air box locating bumper.



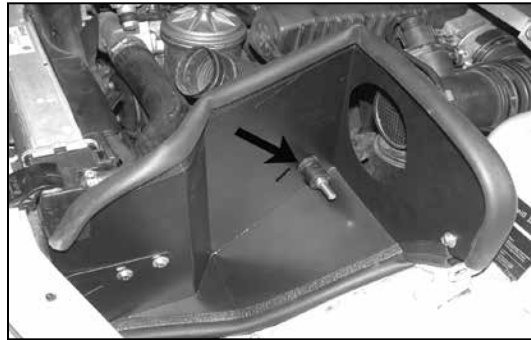
13. Install the heat shield mounting bracket onto the existing holes of the radiator core support with the hardware provided as shown.



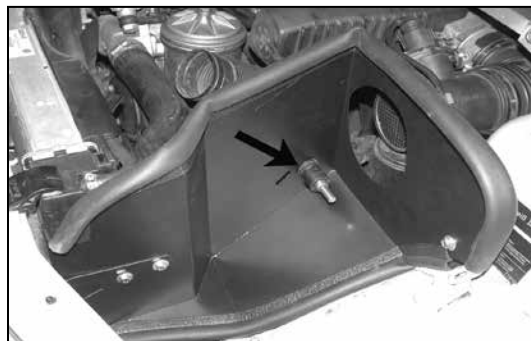
14. Install bracket (070015) onto the heat shield with the provided hardware as shown.
NOTE: Do not tighten at this time.



15. Install the edge trim on to the heat shield as shown.
NOTE: Trim as necessary.



16. Install the heat shield assembly onto the vehicle.
NOTE: The heat shield will pass between the mounting bracket and the vehicle radiator. Secure the heat shield to the mounting bracket provided.



16a. On vehicles equipped with a throttle body heater, pass the throttle body thermostat through the hole in the heat shield and secure with the provided hardware as shown.



17. Install silicone hose (08690) onto the mass air sensor as shown with the provided hose clamps.



18. Install the tube mounting bracket (07195) onto the intake tube with the provided hardware.



19. Install the intake onto the mass air sensor, then secure with the provided hose clamp and secure the tube mounting bracket to the heat shield with the provided hardware.



20. Re-install the speed control removed in step #3 to the mounting brackets with the provided hardware as shown.

NOTE: The heat shield bracket should rest on top of the speed control bracket.



21. Reconnect the speed control electrical connection and twist the locking ring clockwise to lock in position.



22. Install the K&N® air filter and secure with the provided hose clamp.



23. Re-install the radiator cover removed in step #9 and secure with the existing hardware.



24. Reconnect the vehicle's negative battery cable. Double check to make sure everything is tight and properly positioned before starting the vehicle.

25. It will be necessary for all K&N® high flow intake systems to be checked periodically for realignment, clearance and tightening of all connections. Failure to follow the above instructions or proper maintenance may void warranty.

ROAD TESTING:

1. Start the engine with the transmission in neutral or park, and the parking brake engaged. Listen for air leaks or odd noises. For air leaks secure hoses and connections. For odd noises, find cause and repair before proceeding. This kit will function identically to the factory system except for being louder and much more responsive.

2. Test drive the vehicle. Listen for odd noises or rattles and fix as necessary.

3. If road test is fine, you can now enjoy the added power and performance from your kit.

4. K&N Engineering, Inc., requires cleaning the intake system's air filter element every 100,000 miles. When used in dusty or off-road environments, our filters will require cleaning more often. We recommend that you visually inspect your filter once every 25,000 miles to determine if the screen is still visible. When the screen is no longer visible some place on the filter element, it is time to clean it. To clean and re-oil, purchase our filter Recharger® service kit, part number 99-5050 or 99-5000 and follow the easy instructions.