



## PLEASE READ THE INSTRUCTIONS BEFORE FITTING THE KIT

- 1 Remove the complete air filter system including the hose attached to the throttle body.
- 2 Fit the air filter to the intake pipe and adjust until the K&N logo is straight before tightening the clip. Tighten the clip until the filter just rotates, then give one full turn (360 degrees). No more. **Don't overtighten the clip.**
- 3 **Cold air system**  
Release the four fixing screws shown. Release the two side sections by pulling firmly forwards. **Drawing A.**
- 4 Take hold of the metal deflector panel (shaded area) at a point approximately 9.0cm/3.5" down from the slam panel. Pull the metal panel outwards to give enough space for the cold air hose to pass through. When the hose is fitted the panel can be pushed back until it touches the hose (don't squash the hose). **Drawing B.**
- 5 **Carefully** expand the hose to approximately 94cm/37". Drill three 6mm holes in the metal front panel 5cm apart. **Drawing B.**
- 6 Feed the hose behind the slam panel and carefully bend the hose at 90 degrees around the reshaped deflector panel. The hose should protrude approximately 7.5cm/3" and sit behind the grille. **Drawing C.**
- 7 Attach the hose using a plastic tie through the two new holes. Attach the other tie through the other hole and the original hole under the slam panel. Bend the hose down, then upwards. Using a plastic tie attach the hose to the slot in the air filter box bracket. **Drawing C.**
- 8 Position the end of the cold air hose to finish approximately 10cm/4" from the filter (**no nearer**).
- 9 Refit grille assembly with the four screws previously removed. Push the two side sections firmly into place .
- 10 The grille assembly screws on earlier models may be difficult to remove. These can be easily drilled out and replaced.
- 11 **Tuning.**  
Set the **CO** at 1.5% to 2.0%.
- 12 **Filter Maintenance.**  
Under normal conditions clean and reoil the filter at approx. 25,000 miles / 40,000 km. **Use only K&N cleaner and oil** and follow the instructions carefully.

**K&N filters are pre oiled ready to fit**

**The advantages of K&N's cold [air intake system](#)**

Cooler air, being denser, will show positive improvements in power over hot air supplied in the engine compartment.

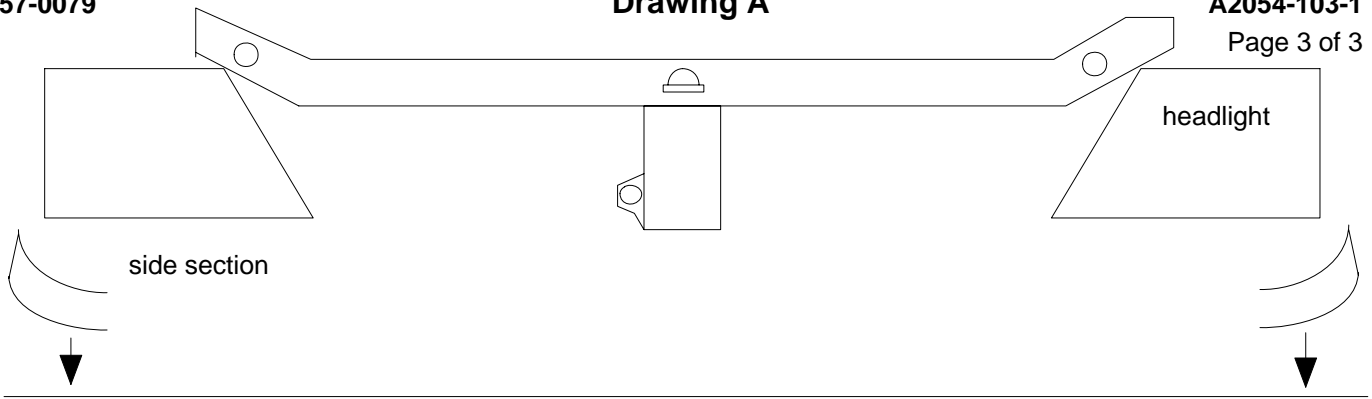
**This Kit Should contain :-**

- 1 x Air filter.
- 1 x Hose clip size 44.
- 1 x Cold air hose assembly.
- 3 x Plastic cable tie (14" long).
- 1 x Instruction sheet.
- 1 x Instruction pack:-
  - 1 x Filter maintenance sheet.
  - 1 x K&N window sticker.
  - 1 x Million mile warranty card.
  - 1 x Leaflet.

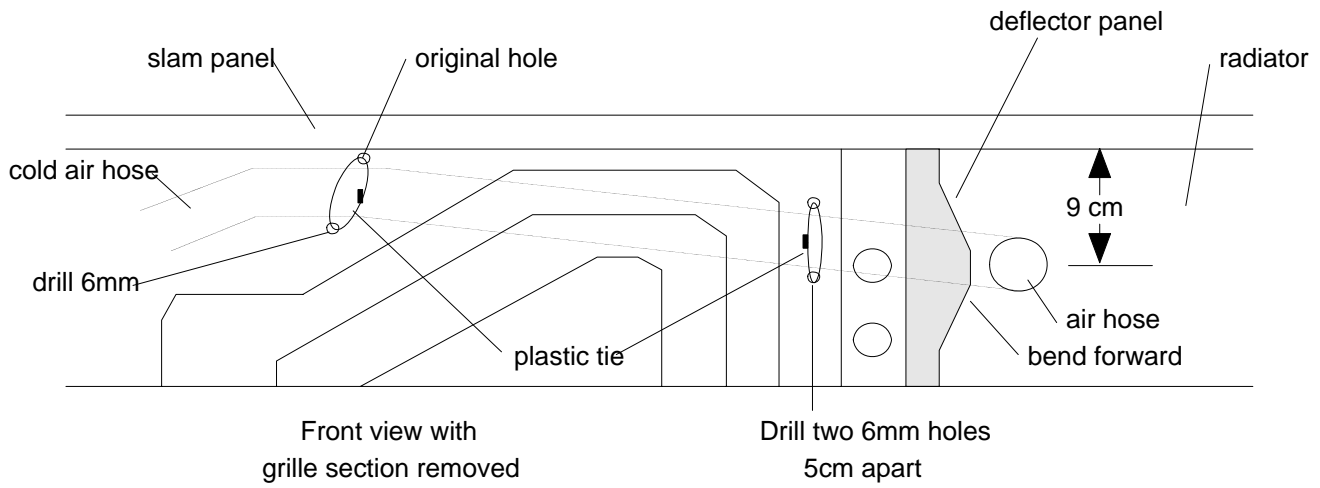
**FITTING YOUR OWN 57i KIT**

If not, **it is essential** that the person fitting the kit (e.g. mechanic) **carefully follows these particular instructions** even if he has fitted K&N kits before. This will save you both time and money. Kits incorrectly fitted may show a loss in performance e.g. the positioning of the essential cold air hose, (flexi expandable and rubber hoses are used).

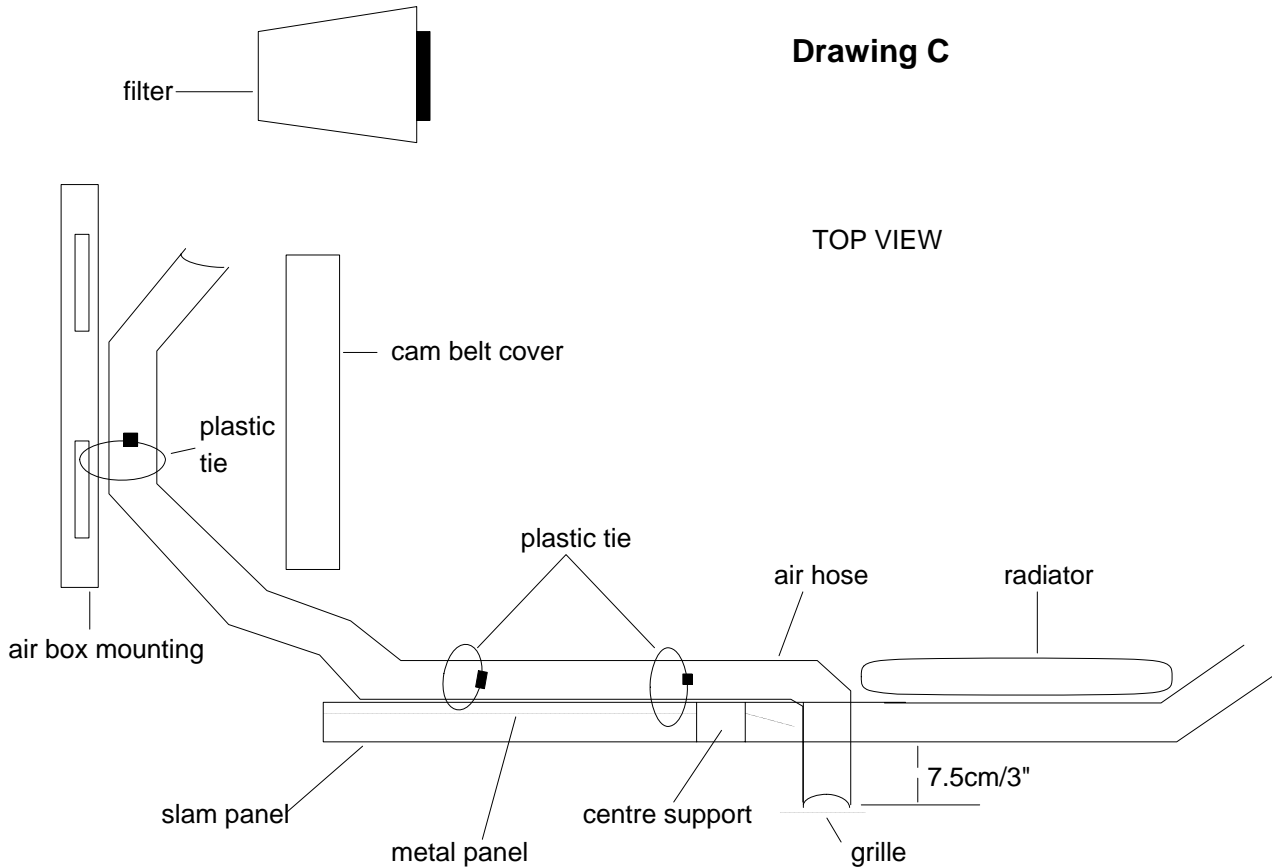
**A final check** under the bonnet, by yourself, with the instructions, would seem sensible.



Drawing B



Drawing C



Drawing D

