



## PLEASE READ THE INSTRUCTIONS BEFORE FITTING THE KIT

- 1 Release the hose clip on the intake pipe and remove the two nuts securing the air box. Remove the plug to the air flow meter (**AFM**).
- 2 Remove the complete air box assembly including the **AFM**.
- 3 Remove the **AFM** from the air box.
- 4 Fit the new bracket to the rear air box mounting. **Drawing A**.
- 5 Attach the **AFM** to the bracket using screws and washers supplied.
- 6 Refit the intake hose to the **AFM** and replace the plug. Fit the filter to the **AFM** and adjust until the K&N logo is straight before tightening in place. Tighten the clip until the filter just rotates, then give one full turn (**360 degrees**). **No more. Don't overtighten the clips.**
- 7 **Cold air system**  
Cut out a section of the LHS (nearside) radiator surround to allow the cold air hose to pass through to the front grille. **Drawing B**.
- 8 Remove the nearside headlight surround and remove the sections shown in **Drawing C**.
- 9 **Carefully** expand the flexi cold air hose to approx. 28cm/11". Feed the hose up against the opened up section of grille. Using the plastic tie attach the hose to the headlight bracket. Position the end of the cold air hose to finish approximately **10cm/4"** from the air filter, (**no nearer**). **Drawing D**.
- 10 **Tuning. CAT. Cars**, no adjustments are required.  
**NON. CAT. Cars**, we suggest that a simple **CO** test is carried out, as some cars may be set weaker than the standard setting. The **CO** figure should not be set at more than **0.5%** above the recommended figure.
- 11 **Filter maintenance.**  
Under normal conditions clean and reoil the filter at approx. 40,000 miles / 65,000 km. **Use only K&N cleaner and oil** and follow the instructions carefully.

**K&N filters are pre oiled ready to fit.**

**The advantages of K&N's cold [air intake system](#)**  
Cooler air, being denser, will show positive improvements in power over filter systems that draw hot air from the engine bay.

**This Kit Should Contain :-**

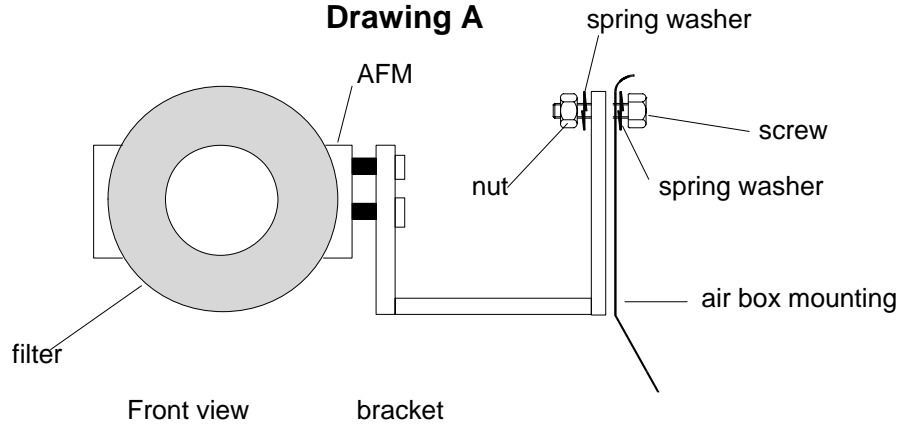
- 1 x Air filter.
- 1 x Cold air hose assembly.
- 1 x Instruction sheet.
- 1 x Instruction pack.
  - 1 x Filter maintenance sheet.
  - 1 x K&N window sticker.
  - 1 x Million mile warranty card.
  - 1 x Leaflet
- 1 x Fixing kit containing :-
  - 1 x #48 Hose clip.
  - 1 x Bracket.
  - 1 x Metal washer.
  - 3 x 8mm spring washers.
  - 3 x M8 hex nuts.
  - 2 x M8 x 16 screw.
  - 1 x Plastic cable tie (14" long).

**FITTING YOUR OWN 57i KIT**

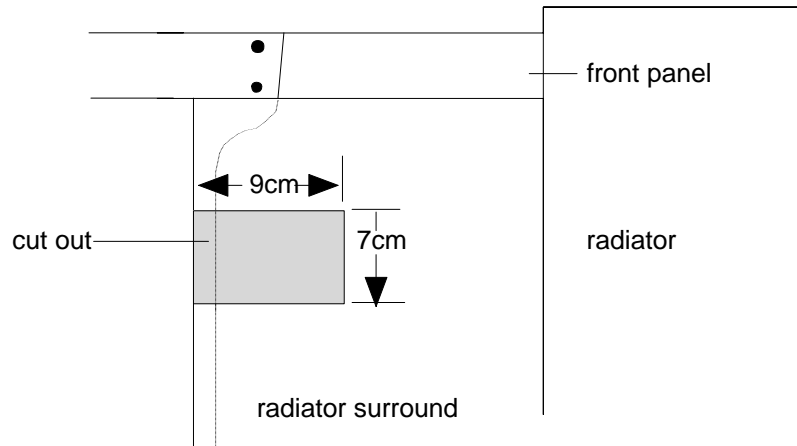
If not, **it is essential** that the person fitting the kit (e.g. mechanic) **carefully follows these particular instructions** even if he has fitted K&N kits before. This will save you both time and money. Kits incorrectly fitted may show a loss in performance e.g. the positioning of the essential cold air hose, (flexi expandable and rubber hoses are used).

**A final check** under the bonnet, by yourself, with the instructions, would seem sensible.

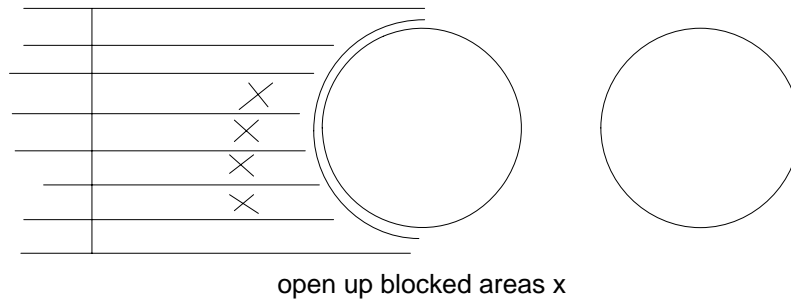
**Drawing A**



**Drawing B**



**Drawing C**



**Drawing D**

