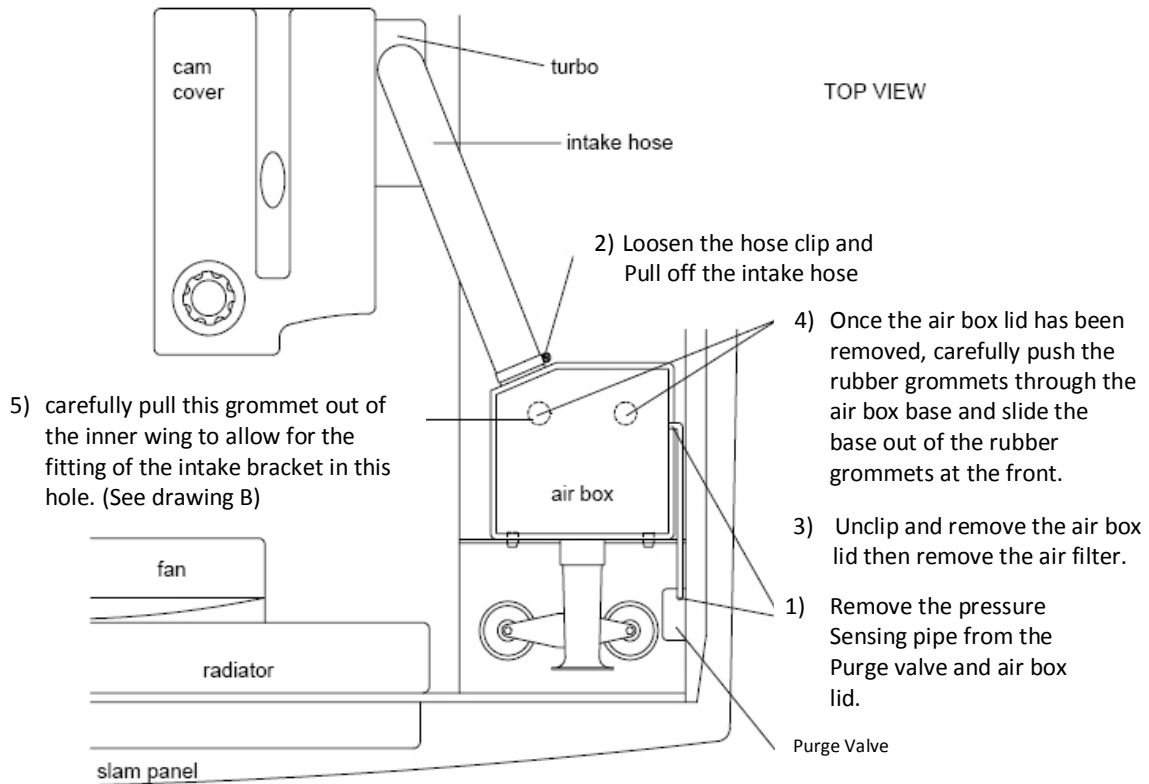
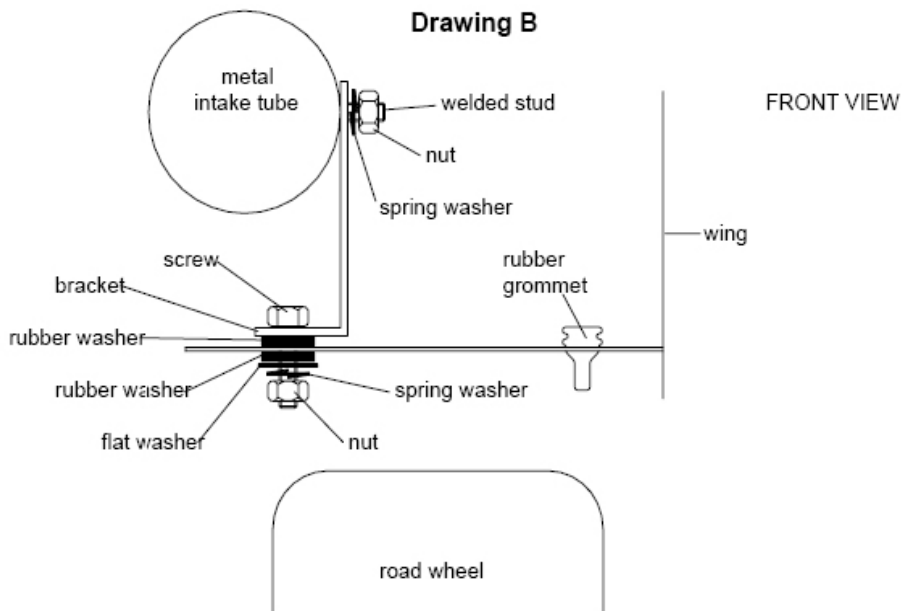


**PLEASE READ THESE INSTRUCTIONS CAREFULLY BEFORE FITTING THIS KIT**

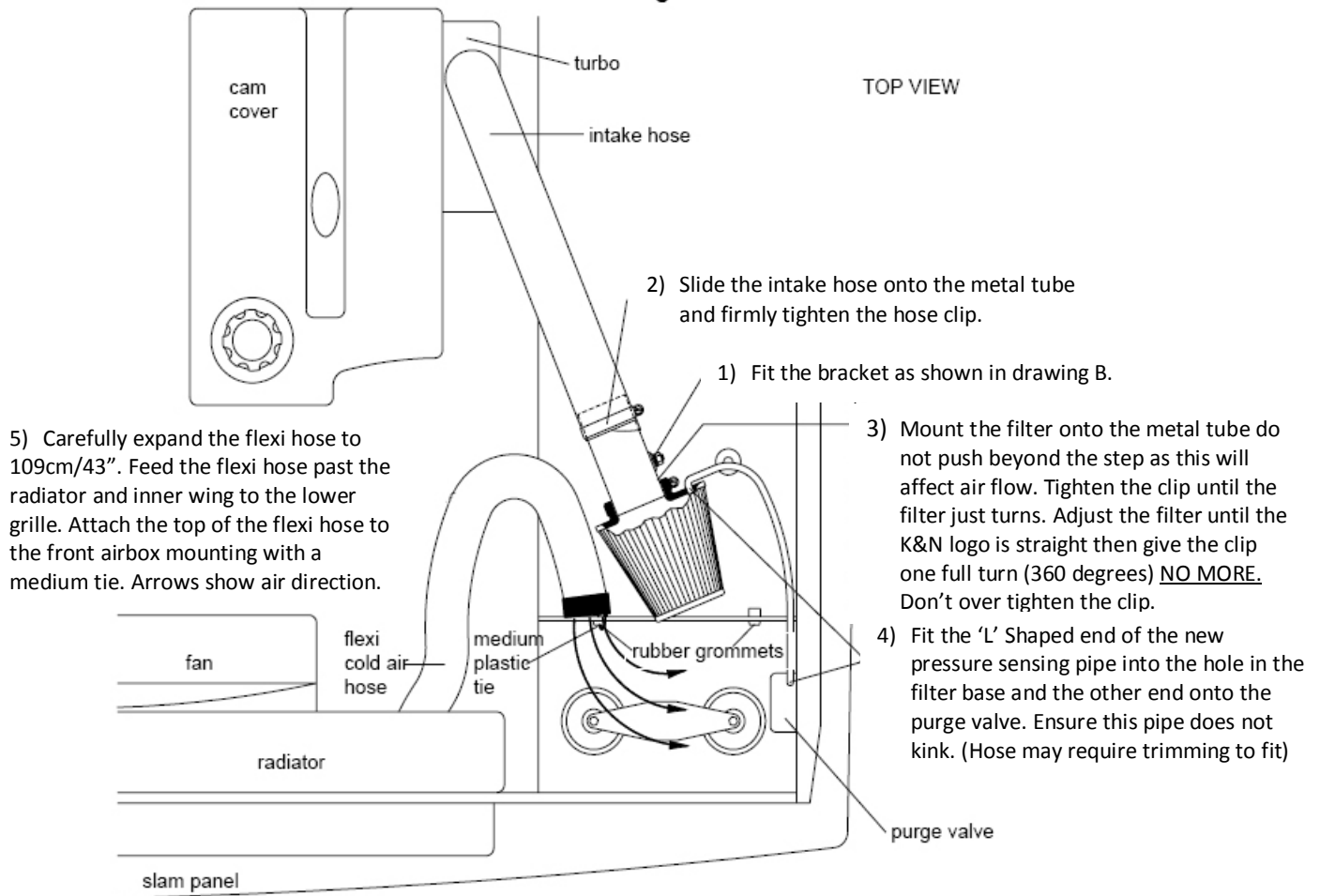
**Drawing A**



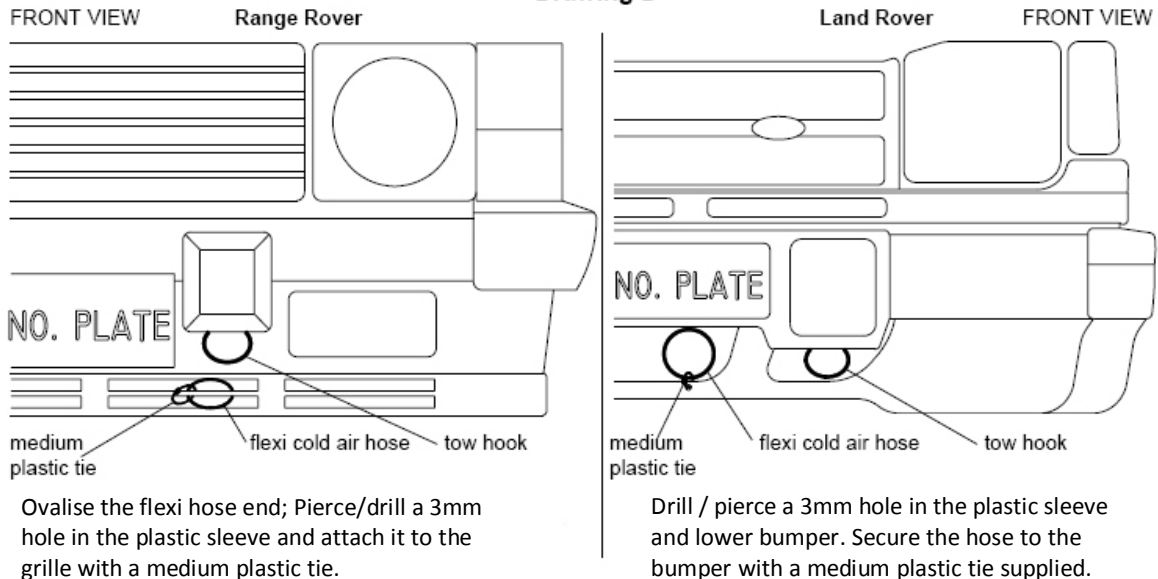
**Drawing B**



Drawing C



Drawing D



**Tuning.**

**CAT. Cars** No adjustments required

An increase in fuel mixture may be required if further modifications are carried out.

**Filter Maintenance.**

Under normal conditions clean and re-oil the filter at approx. 40,000miles / 65,000km

**Use only K&N cleaner and oil.** Follow the instructions carefully.

**K&N Filters are pre oiled and ready to fit.**

**The advantage of K&N's cold air intake system.**

Cooler air being denser will show positive improvements in power

Over filter systems that draw hot air from the engine bay.

**This Kit Should Contain:**

1	x	Clamp On Filter
1	x	Cold Air Hose Assembly
1	x	Metal Intake Tube
1	x	Instruction Sheet
<b>1</b>	<b>x</b>	<b>Instruction Pack:-</b>
	1	x Filter Maintenance Sheet
	1	x K&N Window Sticker
	1	x Million Mile Warranty
	1	x Leaflet
<b>1</b>	<b>x</b>	<b>Fixing kit:-</b>
	1	x Bracket
	1	x #44 Hose Clamp
	1	x Pressure Sensing Pipe
	1	x M6 x 20 Screw
	1	x 6mm x 25 Flat Washer
	2	x Rubber Washers
	2	x M6 Nuts
	2	x Spring Washers
	2	x Medium Cable Ties

**FITTING YOUR OWN 57i KIT**

If not it is essential that the person fitting the kit (e.g. mechanic) carefully follows these particular instructions even if he has fitted K&N kits before. This will save you both time and money. Incorrectly fitted kits may show a loss in performance e.g. the positioning of the essential cold air hose. (Flexi expandable and rubber hoses are used)

**A final check** Under the bonnet by yourself with the instructions would seem sensible.