



INSTALLATION INSTRUCTIONS

Part Number E-0776

This filter fits: **See current catalog for applications**

Congratulations, you have purchased the finest air filter that money can buy. With proper care, this filter will last 1 million miles or more. This filter is a direct replacement for the stock air filter, and no modifications will be required. However the following procedures **MUST** be followed to ensure the proper fit and seal of the K&N *Filtercharger*®.

1. Unfasten air box clamps.
2. Remove the airbox lid from the vehicle.
3. Remove the dirty air filter. (See Fig. 1)
4. Wipe out any dirt or dust that may be inside the air filter housing.
5. Install the K&N *FILTERCHARGER*® into the airbox base. (See Fig. 2)
6. Press around the edges of the filter to insure that it is properly sealed.
7. Re-install the airbox lid and re-fasten the air box clamps.

NOTE: FAILURE TO FOLLOW INSTALLATION INSTRUCTIONS AND USE THE PROVIDED HARDWARE MAY IMPAIR THE PERFORMANCE OF YOUR FILTER AND DAMAGE YOUR ENGINE.

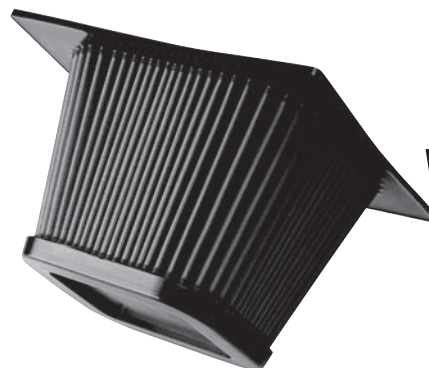


Fig. 1



Fig. 2

**Replace
Factory
Filtration**



**The
World's Best
Air Filter**

Learn more about performance air intake systems we have.