



Installation Instructions (Page 1)

2003-2009 Toyota 4Runner - FJ Cruiser
Land Cruiser 120 - Lexus GX470 2.5 Front
Coilover

Front Parts List:

- 2 – Front Coil Over Shocks (25001-124) or (25001-261)
- 2 – Front Reservoir Brackets (Left 25048-108 – Right 25048-109)
- 1 – Hardware Kit (KH02-103)

Tools Required:

- Floor Jack/Jack Stands
- Metric Wrench/Socket Set
- Standard Wrench/Socket Set

Toyota 4Runner/FJ Cruiser
OEM PERFORMANCE SERIES

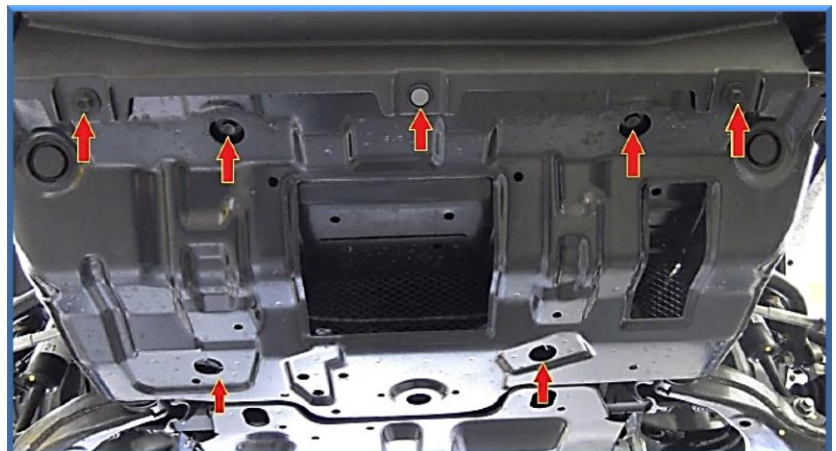


FRONT SHOCKS: With the vehicle on level ground, set the emergency brake and block the rear tires. Using a floor jack, raise the front end and support the frame rails with jack stands for safety. Then remove the front tires.

NOTE: Never work under an unsupported vehicle.

(These instructions cover a few different vehicles; some steps may vary or may not apply to your vehicle)

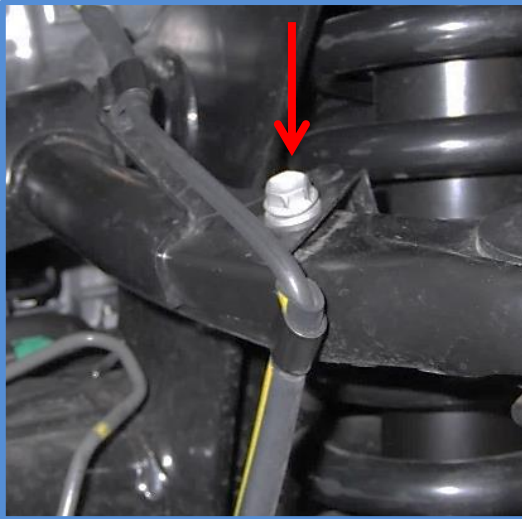
1. Remove the front skid plate. It is held on by 4 bolts. (Some models may also have two bolts and a plastic push pin that attach fascia to the skid plate. Remove those first), then remove the 4 skid plate mounting bolts, remove skid plate and set aside.



IMPORTANT: Read all instructions thoroughly from start to finish before beginning the install. Check parts list and make sure all parts are included in the kit. If the instructions are not properly followed severe frame, driveline and/or suspension damage may result. Check for frame and suspension damage prior to installation.

This kit does not require welding. Do not weld on any component. Welding may void the warranty and/or cause the product to fail.

2. Remove ABS sensor wire from the upper control arms.

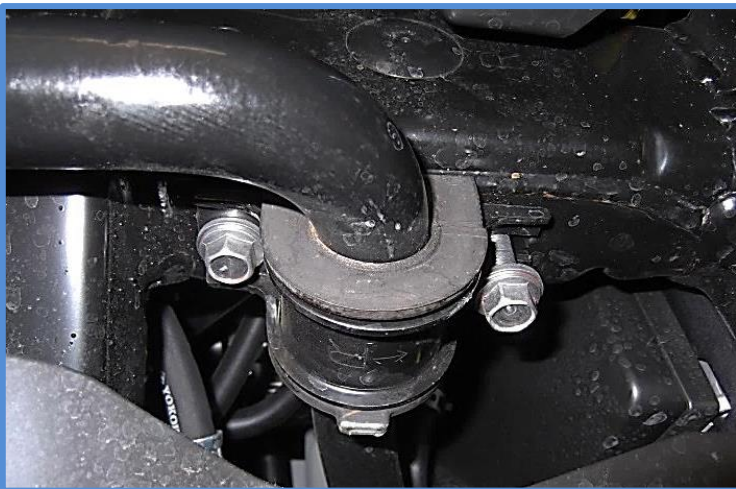


3. Disconnect upper A-arms (A), sway bar links (B), tie rods (C), and lower shock mounting bolts (D).



Use an allen wrench to hold the sway bar link stud for removing and tightening nut.

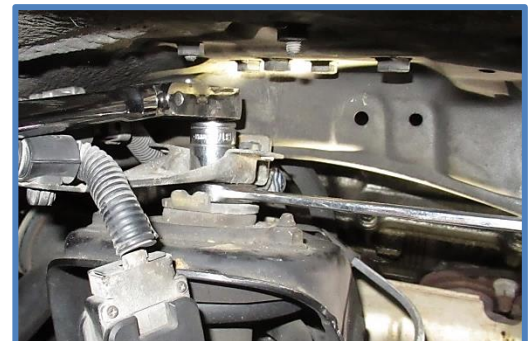
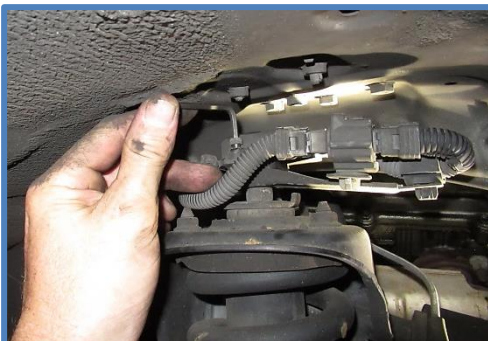
4. Remove Sway Bar, notice that the sway bar mounting brackets are side specific and must be oriented properly when reinstalling.



5. Remove the three nuts from the upper mount and remove shock.



For Lexus GX470 you will need to remove and unplug the control module on top of the shock.



IMPORTANT: Read all instructions thoroughly from start to finish before beginning the install. Check parts list and make sure all parts are included in the kit. If the instructions are not properly followed severe frame, driveline and/or suspension damage may result. Check for frame and suspension damage prior to installation.

This kit does not require welding. Do not weld on any component. Welding may void the warranty and/or cause the product to fail.

6. Install the reservoir brackets to the frame (Reservoir brackets are side specific). Use the existing threaded holes in the frame (for the sway bar) to mount the reservoir brackets with the M10-1.25x40mm Allen head bolts. You will install the sway bar to the threaded holes in the reservoir brackets using the 3/8 x 3/4" bolts provided in the kit after the shock is installed.



7. Install your new King coil over shocks by placing them in position in the mounts on the vehicle and get the upper 3/8 x 1" bolts started to hold it in place. Be aware that the shocks are side specific and need to be oriented so the reservoir hose is pointing toward the front of the vehicle. Also, the reservoir hose will be routed under the upper control arm. With the upper bolts installed but not tightened yet install the factory bolt in the lower mount, the head of the bolt should be facing the front of the vehicle so the nut is on the back side. You may need to push down on the lower control arm to get the lower shock mounting bracket and rod end to line up, do not force the bolt into the mount by pounding it in as this will damage the threads. Tighten all bolts.



8. Install reservoir in the reservoir bracket using the provided hose clamps. Position the reservoir so it is centered in the cradle with the hose pointing almost straight back. Adjust accordingly.



IMPORTANT: Read all instructions thoroughly from start to finish before beginning the install. Check parts list and make sure all parts are included in the kit. If the instructions are not properly followed severe frame, driveline and/or suspension damage may result. Check for frame and suspension damage prior to installation.

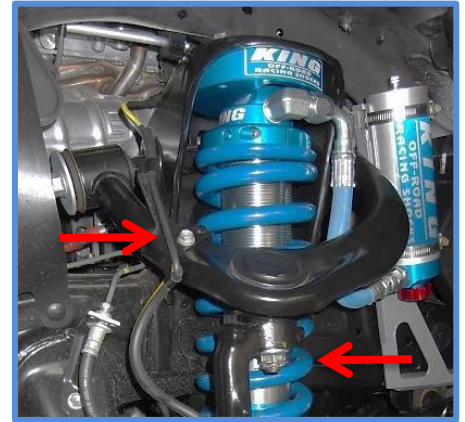
This kit does not require welding. Do not weld on any component. Welding may void the warranty and/or cause the product to fail.



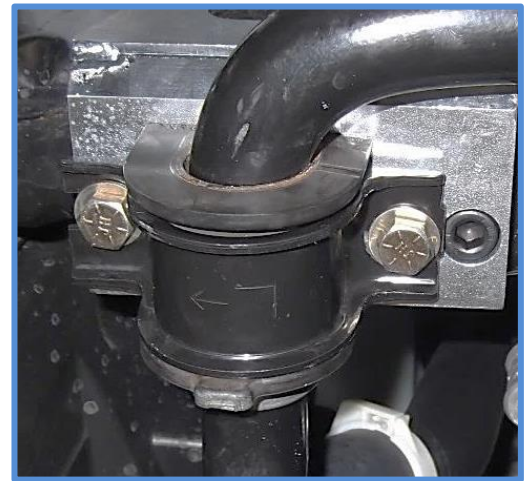
Installation Instructions (Page 4)

2003-2009 Toyota 4Runner - FJ Cruiser
Land Cruiser 120 - Lexus GX470 2.5 Front
Coilover

9. Reconnect the upper control arms, ABS sensor wires and tie rods.

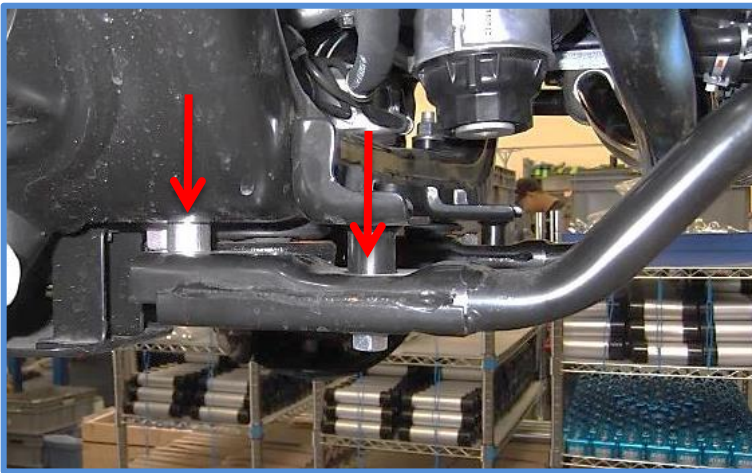


10. Install the sway bar to the threaded holes in the reservoir bracket using the 3/8 x 3/4" bolts and washers provided in the kit. The factory sway bar brackets are side specific and stamped "L" and "R" with an arrow that points toward the front of the vehicle. After the sway bar is mounted to the frame you can reconnect the sway bar links to the steering knuckle.



Some vehicles may require installing spacers to drop down the skid plate supports to make room for the sway bar...

11. Install the skid plate tubular support pieces using the spacers and M10x30mm bolts provided in the kit.



12. Install skid plate using the factory hardware.

IMPORTANT: Read all instructions thoroughly from start to finish before beginning the install. Check parts list and make sure all parts are included in the kit. If the instructions are not properly followed severe frame, driveline and/or suspension damage may result. Check for frame and suspension damage prior to installation.

This kit does not require welding. Do not weld on any component. Welding may void the warranty and/or cause the product to fail.



Installation Instructions (Page 5)

2003-2009 Toyota 4Runner - FJ Cruiser
Land Cruiser 120 - Lexus GX470 2.5 Front
Coilover

DOUBLE CHECK ALL HARDWARE:

Make sure everything is installed correctly and all hardware is tight before reinstalling tires. Install tires, remove jack stands and lower vehicle to the ground. Recheck all hardware and lug nuts after 100 miles and periodically after that as part of routine maintenance.



Alignment is critical:

A professional alignment must be performed before driving this vehicle at highway speeds. Do not attempt to drive your vehicle after this install without having the alignment readjusted to factory specs!

IMPORTANT: Read all instructions thoroughly from start to finish before beginning the install. Check parts list and make sure all parts are included in the kit. If the instructions are not properly followed severe frame, driveline and/or suspension damage may result. Check for frame and suspension damage prior to installation.

This kit does not require welding. Do not weld on any component. Welding may void the warranty and/or cause the product to fail.

[View other performance suspension parts made by King Shocks on our website.](#)