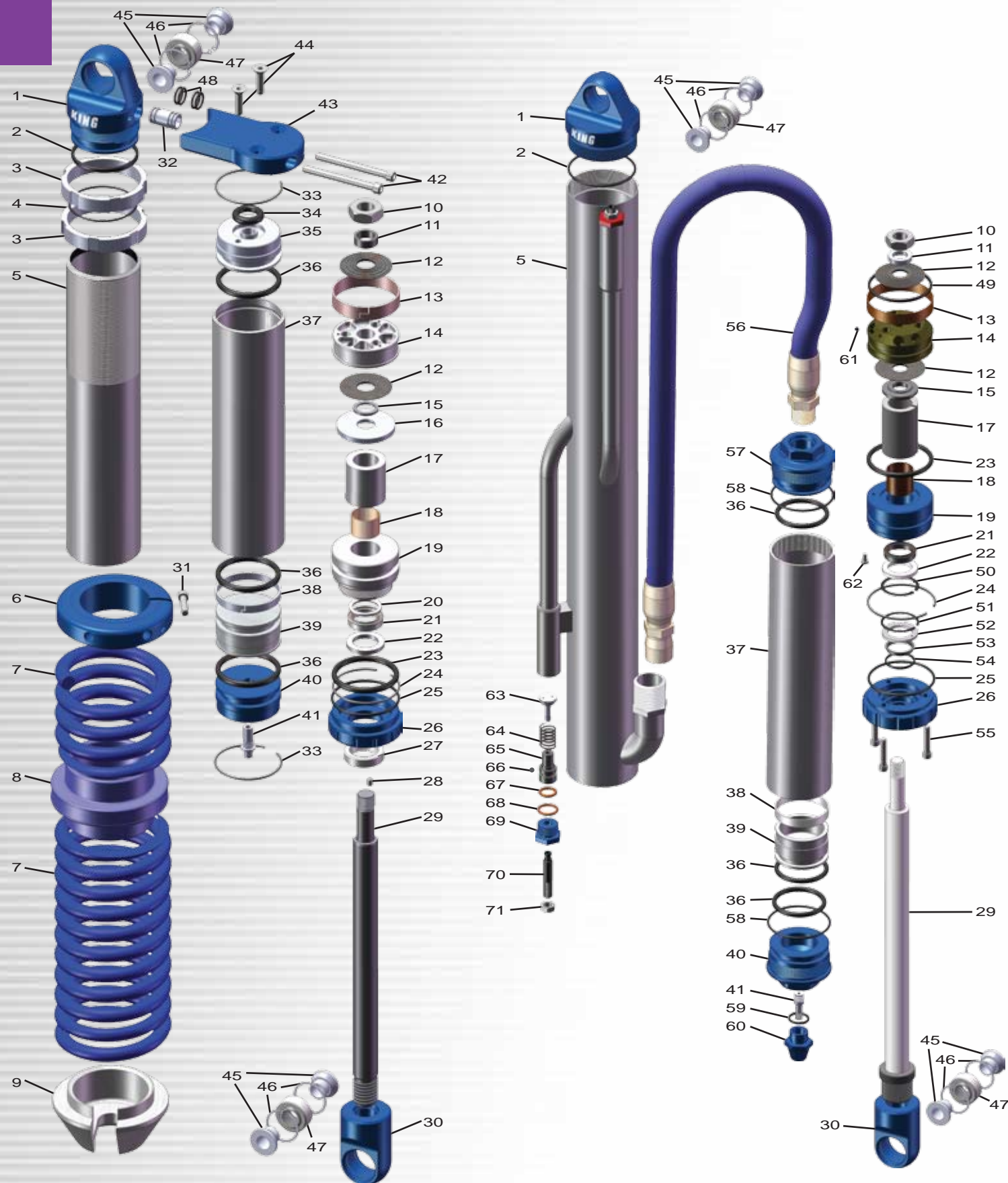




KING FACTORY REPLACEMENT PARTS

King shocks are made from the finest materials available to provide years of trouble free service. Our shocks have evolved from pure racing designs so they are able to be tuned and serviced with simple hand tools. Any part on a King shock can be rebuilt or replaced with factory fresh pieces. When the time comes, convenient pre-packaged seal and shim kits as well as wear bands, bearings, shafts and shock oil are just a phone call away. All the parts that go into a King shock are identified below.



Parts Glossary

- 1-Top Cap
- 2-Top Cap O-Ring
- 3-Secondary Nuts
- 4-Secondary Nut O-Ring
- 5-Shock Cylinder
- 6-Coil Adjustment Nut
- 7-Coil Spring
- 8-Coil Slider
- 9-Coil Plate
- 10-Piston Retaining Nut
- 11-Piston Retaining Washer
- 12-Valve Shims
- 13-Piston Wear band
- 14-Piston
- 15-Base Washer
- 16-Top Out Washer
- 17-Shaft Spacer
- 18-Shaft Guide / DU Bushing
- 19-Seal Cap
- 20-Shaft O-Ring
- 21-Main Seal
- 22-Main Seal Retainer
- 23-Seal Cap O-Ring
- 24-Shock Cylinder C-Clip
- 25-Wiper Cap O-Ring
- 26-Wiper Cap
- 27-Wiper Seal
- 28-Set Screw
- 29-Shock Shaft
- 30-Rod End
- 31-Coil Adjustment Pinch Bolt
- 32-Piggyback Mounting Sleeve
- 33-Reservoir C-Clip
- 34-Piggyback Adaptor O-Ring
- 35-Piggyback Reservoir Oil End Cap
- 36-Reservoir O-Rings
- 37-Reservoir Cylinder
- 38-Reservoir Piston Wear Band
- 39-Reservoir Piston
- 40-Remote Reservoir Air End Cap
- 41-Schrader Valve
- 42-Piggyback Mounting Plate Bolts
- 43-Piggyback Mounting Plate
- 44-Piggyback Reservoir End Cap Bolts
- 45-Spacer
- 46-Bearing C-Clips
- 47-Spherical bearing
- 48-Piggyback Mounting Sleeve O-Rings
- 49-Piston O-Ring
- 50-Main Seal C-Clip
- 51-Wiper Seal C-Clip
- 52-Wiper Seal Retainer
- 53-Wiper Seal
- 54-Wiper O-Ring
- 55-Wiper Cap Bolts
- 56-Remote Reservoir Hose
- 57-Remote Reservoir Oil End Cap
- 58-Remote Reservoir End Cap O-Ring
- 59-Schrader Valve Cap O-Ring
- 60-Schrader Valve Cap
- 61-Piston Bleed Screw
- 62-Seal Cap Bleed Screw
- 63-Bypass Valve
- 64-Bypass Spring
- 65-Bypass Valve Stop
- 66-Bypass Valve Stop Set Screw
- 67-Bypass Valve Stop O-Ring
- 68-Bypass Adjusting Nut O-Ring
- 69-Bypass Adjusting Nut
- 70-Bypass Adjusting Screw
- 71-Bypass Adjusting Jam Nut



Gallon size King, high performance shock fluid.
Get the edge on your competition by running high quality, specially formulated, King shock oil. Shock Oil: **Part # F10011** Air Shock oil: **Part # F10012**



King seal replacement kit.
Rebuild your shocks with genuine factory replacement parts made from the proper materials for peak performance. **Multiple kit sizes available**



King performance shim kit.
King valve shims are made from a unique stainless alloy that remains stable at high temperatures and does not crack like plain steel shims do. King shims are crucial to maintain proper, consistent performance from your King shocks. **Multiple sizes available**



King piston wear bands.
King piston wear bands are made from Teflon impregnated bronze material unlike all others. They give you a higher level of safety and performance. **Multiple sizes available**



Schrader valves.
High pressure, high temperature, precision made Schrader valves.
CV2101-(short) CV2102-(long)



Spherical bearing reducers/ spacers.
Properly locate your shocks while still allowing articulation with these spacers. Available to fit several bolt sizes and mounting tab widths. **Multiple sizes available**



Cylinder and shaft clamping soft jaws.
Get a firm grip on shock bodies and shafts when doing service without scratches or dents. **Part # 100-001-(3/4"shaft) 100-002-(7/8"shaft) 100-003-(1"shaft) 100-004-(1 1/4"shaft) 100-005-(2.0PR clamp) 101-002-(2.5PR clamp) 101-001-(2.5RS clamp) 101-004-(3.0RS clamp) 101-003-(2.5&3.0RES clamp)**



Coil nut adjusting spanner wrenches.
Beautifully anodized billet spanner wrenches for 2.0 and 2.5 diameter shock preload adjustments. **Part # T1002-(2.0) T1002-002-(2.5)**



T-Handle coil nut adjuster wrench.
Make quick work of coil nut adjustments with this textured t-handled adjuster. One size for 3.0 and bigger and another for 2.0 and 2.5 inch shocks. **Part # 25308-100-(2.0 & 2.5) 30313-100-(3.0)**



Standard coil nut adjuster wrench.
Simple, durable coil nut adjuster wrench for setting preload and ride height. **Part # 25308-002**



Retaining ring pliers.
Quality, precision, German made snap ring pliers have comfortable padded grips. They come in two sizes to handle a range of snap ring diameters. **Part # CR2901-(small) CR2902-(large)**



King shock charging manifold
Accurate 0-400 PSI pressure gage, easy to use manifold for precise shock charging. **Part # T1001-100**



King assorted decal kit.
Show your pride in running the best shocks available with King decals. **Part # D13001**



DEALER INQUIRES
WARRANTY & RETURN

CARL RENEZEDER
MULTI-TIME SHORT COURSE CHAMPION

JOIN THE KING DEALER NETWORK

King Shocks, the leader in performance damping technology, is currently expanding their dealer network. Join the team that continuously leads the way with innovative designs and the most comprehensive customer support in the industry. King shocks are designed to allow custom tuning to suit your customer's vehicle and driving style. There are over 30 custom options available to provide your customers with endless choices when purchasing their King shocks. Applications are available for UTV's, bolt on OEM upgrades, Sand cars, 4X4's, custom applications and all out racing. As a dealer, you can attend King factory technical training to provide custom tuning and rebuilding to your customers, or concentrate on sales and rely on the existing factory provided services, the choice is yours.

King Shocks are made in the USA using the finest raw materials available under the strictest precision tolerances. Not only are they the best performing shocks, they are also exquisitely finished jewels that will add appeal to any vehicle. King's quality and value will help you gain a diversified, loyal, customer base with the high level of satisfaction that comes from owning the best. Inquire today about all the benefits of becoming an authorized dealer and servicer of King performance shock absorbers.

THE KING SHOCK WARRANTY

King Shock Technology, (King Shocks), reserves the right to change or modify any of the products and their inherent physical and technical specifications without prior notice. King Shocks and affiliates assume no responsibility or liability for any errors or inaccuracies within. Products may not be exactly as displayed; prices and specs are subject to change without notice. Plating, anodizing and other coatings used are warranted to be free from defects at time of sale only. They may degrade over time depending on environmental conditions beyond the control of King Shocks. King Shocks' products are warranted to be free from manufacturing defects for a period of 90 days from date of purchase. The warranty does not cover; crash damage, abuse, modified and/or use of non- King parts, lack of maintenance or incorrect supplied dimensions and or specifications on custom orders. The user shall determine the suitability of the product for his or her intended use and shall assume all risk and liability in connection therewith.

DEALER INQUIRES
WARRANTY & RETURN

Check out the collection of suspension systems we offer.