

# **KING** *RACING*

HIGH PERFORMANCE BEARINGS

*The science of speed*



**Bull's Eye Tolerance™**  
Perfect clearance  
in every set



**pMaxBlack™**  
Superior load  
capacity



**U-Groove™**  
Greater load  
surface



**Elliptix™**  
Improved oil  
ingress

***2016-2017 Application Guide***

## Continuously pushing the limits

Today's race engines make more power than ever before. Yesterday's engine bearing load capacity no longer works today... and tomorrow's race engines will be even more powerful. There's a need to meet these demands with higher bearing design standards and improved materials.

King Racing's XP series of rod and main bearings was developed to meet these challenges through technologically advanced geometrical features and a unique metal structure. Together, they drive the industry to a new level of durability and performance.



### pMAX Black™ Superior load capacity

A unique tri - metal structure developed to meet the ongoing demand for increased engine bearing load capacity.

- 24% stronger overlay
- 17% more fatigue resistance
- SecureBond™ - A micro - etch process that improves multi - layer adhesion and structural integrity
- Compatible with all crankshafts

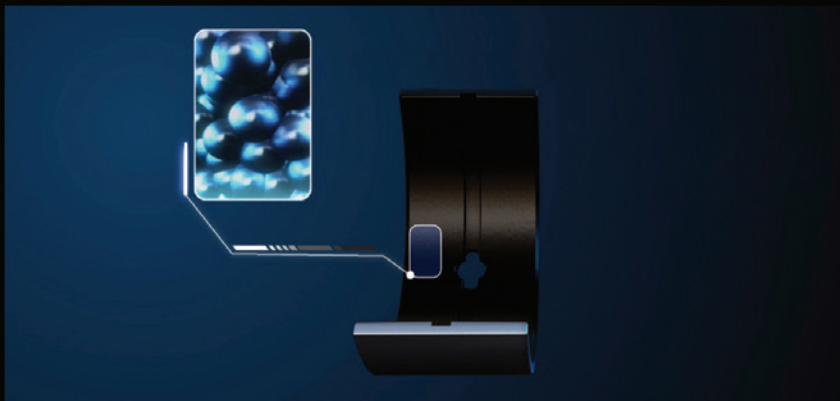
#### **Intermediate layer:**

- Copper - based alloy strengthened by 4.5% tin
- Industry's highest hardness level - 115HV
- Load capacity - 17,000 PSI

#### **Overlay:**

- Strengthened by 5% copper
- Industry's highest hardness level - up to 18.1HV
- Fatigue resistance - 10,200 PSI

## Breakthrough hardening technology



King Racing's new hardening technology modifies the overlay molecular structure and creates a fatigue - resisting shield, capable of carrying 24% more load.

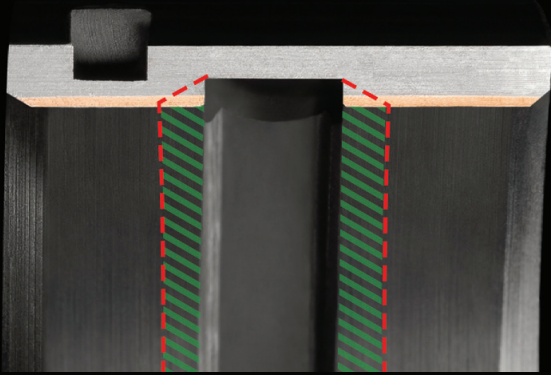




## U-Groove™ Greater load surface

A unique oil groove design with a 90° groove shape. **U-Groove™** increases bearing load capacity by expanding the effective surface area, while keeping oil flow capacity intact.

- Better load distribution across the bearing surface
- More stable hydrodynamic lubrication regime
- Greater bearing durability at high RPM's

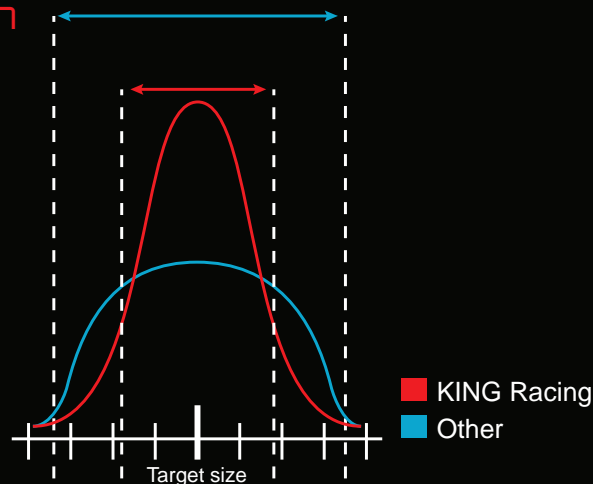


## Bull's Eye Tolerance™ Perfect clearance in every set

**Bull's Eye Tolerance™** sets new standards in bearing thickness consistency. It outperforms the industry's wall thickness tolerance, ensuring the least thickness variation.

- No more purchasing multiple sets or “fishing” for bearings to reach the right clearance
- No need to grind cranks “fat” or “thin”
- No need to adjust housing diameter
- Less taper across the bearing face

## The most accurate clearance in the industry Wall Thickness Variation

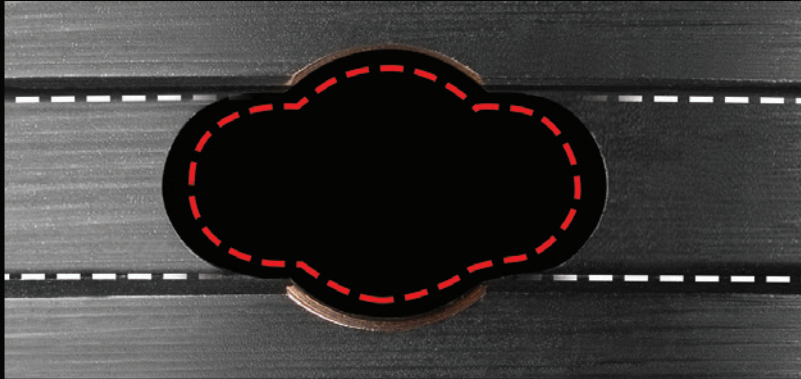




## ElliptiX™ Improved oil ingress

**ElliptiX™** is a newly designed oil slot / oil hole hybrid. It improves oil ingress without affecting the bearing's surface or compromising the load capacity.

- Increases oil passage capacity
- Higher oil supply reliability
- Eliminates need for custom- made oil hole enlargement



## RadiaLock™ Optimal crush height and heat transfer

**RadiaLock™** is an optimal crush height value determined by a robust R&D process that customizes each bearing crush height to its specific performance demands.

- Optimal press fit
- Improves bearing spin and fretting prevention
- Better heat transfer
- Reduces bearing and housing distortion



## EccentriX™ A superior hydrodynamic regime

**EccentriX™** is an optimized eccentricity value reached through elasto hydrodynamic analysis and dynamic calculations. Each bearing's eccentricity value is custom designed to meet specific performance requirements.

- Better oil wedge formation
- More stable hydrodynamic lubrication regime
- Reduces vibration and wear
- Prevents oil film “wiping” under high RPM conditions
- Optimizes load distribution across the bearing surface





Engine	Conrod Bearing Set XP Series	Conrod Bearing Set HP Series	Main Bearing Set XP Series	Main Bearing Set HP Series	Thrustwasher Set	Cam bearings set
<b>ALFA ROMEO</b>						
1	1.3L DOHC 8v 101, 105/31, 115	CR4595XP		MB 511XP		
2	1.6L DOHC 8v 105	CR4595XP		MB 511XP		
3	1.8L DOHC 8v 105.48	CR4595XP		MB 511XP		
4	2.0L DOHC 8v AR016	CR4595XP		MB 511XP		
5	2.0L DOHC 8v AR64103, AR67201	CR4595XP		MB 511XP		
<b>AUDI / VOLKSWAGEN</b>						
6	1.6L SOHC/OHC 8v AEA	CR4597XP		MB5028XP		TW2010AM
7	1.6L SOHC ABB, ABM, ADA, ADP, DT, JU, PP, RN, SA ('83-'01)	CR4104XP		MB5566XP		TW2010AM
8	1.6L 8v AFT	CR4104XP		MB5269XP		TW2010AM
9	1.6L SOHC/OHC 8v AKS	CR4104XP		MB5269XP		TW2010AM
10	1.6L 8v APF	CR4104XP		MB5661XP		TW2010AM
11	1.6L SOHC/OHC 8v AEH, AKL, AWH, AUR, AHL, ARM	CR4104XP		MB5661XP		TW2010AM
12	1.8L DOHC 20v AVC	CR4104XP		MB5269XP		TW2010AM
13	1.8L DOHC 20v AJL (till '99)	CR4104XP		MB5566XP (360° oil groove in pos. 4) MB5269XP (180° oil groove)		TW2010AM
14	1.8L DOHC 20v AJL (from '99)	CR4104XP		MB5661XP		TW2010AM
15	1.8L 20v APH	CR4104XP		MB5269XP		TW2010AM
16	1.8L SOHC 10v 4B, DR, DS, DZ, JN, JV, JW, NE, NP, PH, PM, PV, RS, RU, SF, SH ('82-'91)	CR4104XP		MB5566XP		TW2010AM
17	1.8L DOHC 20v AFY, ADR, ARK	CR4104XP		MB5566XP (360° oil groove in pos. 4) MB5269XP (180° oil groove)		TW2010AM
18	1.8L DOHC 20v AQE, ARH, AVV ('97-'04)	CR4104XP		MB5661XP		TW2010AM
19	1.8L DOHC Turbo AEB ('95-'01)	CR4104XP		MB5566XP		
20	1.8L DOHC Turbo AJO, AMK, APP, APY, AQA, ARZ, AUL, BFV ('97-'06)	CR4104XP		MB5661XP		
21	1.8L DOHC Turbo AMB, ARX, ARY, AUM, AUQ, AVJ, AWT, BEX, BFB ('00-'>)	CR4597XP		MB5661XP		
22	1.8L 8v AAM, ANN, ANP, ADF	CR4104XP		MB5661XP		TW2010AM
23	1.8L DOHC 20v ARG, APT, ANB, APG, AWC, AGN, ANB, APX, AGU, APU	CR4104XP		MB5661XP		TW2010AM
24	1.8L 20v BAM	CR4104XP		MB5661XP		TW2010AM
25	1.8L SOHC/OHC 8v ADZ	CR4104XP		MB5661XP		TW2010AM
26	2.0L 8v AGG, AKR, AWF, AWG, BEF	CR4104XP		MB5269XP		TW2010AM
27	2.0L SOHC 8v 3A, AAD, AAE, ABK, ABT, ADW ('88-'98)	CR4104XP		MB5566XP		TW2010AM
28	2.0L DOHC 16v 6A, ACE ('90-'96)	CR4104XP		MB5566XP		TW2010AM
29	2.0L DOHC 20v ALT ('00-'08)	CR4597XP		MB5661XP		TW2010AM
30	2.0L DOHC16v AWA, AXW, BMB ('00-'08)	CR4597XP		MB5661XP		TW2010AM
31	2.0L DOHC 16v Turbo AXX, BGB, BUL, BWA, BWE ('04-'>)	CR4597XP		MB5661XP		TW2010AM
32	2.0L 10v JL, PS, KP, RT, SK, SL	CR 505XP		MB 605XP		TW2009AM
33	2.0L 20v NM	CR 505XP		MB 605XP		TW2009AM
34	2.0L SOHC/OHC, 10v HP, JS	CR 505XP		MB 605XP		TW2009AM
35	2.0L 8v AXA, AUZ, AVA	CR4104XP		MB5661XP		TW2010AM
36	2.0L SOHC/OHC 8v AQY, AEG, BHY, ASU, APK	CR4104XP		MB5661XP		TW2010AM
37	2.2L SOHC/OHC 10v KM, KX, HY, HX, KU, KZ, PX, KV, JT	CR 505XP		MB 605XP		TW2009AM
38	2.3L SOHC/OHC 10v NF, NG, PR, AAR	CR 505XP		MB 605XP		TW2009AM
39	2.3L DOHC 20v 7A	CR 505XP		MB 605XP		TW2009AM
40	2.5L 10v AAF, AEN, AET, AEU, AVT	CR 505XP		MB 605XP		TW2009AM
41	2.5L SOHC/OHC 10v ACU, APL	CR 505XP		MB 605XP		TW2009AM
42	2.8L VR6 R30 AAA, AES, AQP, AUE, AYL, BDE	CR6764XP		MB7089XP		
43	3.2L VR6 R32 AZZ, AXJ, BDL, BFH, BJS, BKK, BKJ, BUB, CFLA	CR6764XP		MB7089XP		
<b>BMW</b>						
44	1.6L SOHC 8v M40B16, M43B16	CR4042XP		MB5082XP		
45	1.6L SOHC 16v W10B16 Mini Cooper	CR4537XP			MB5667SI**	
46	1.6L SOHC 16v Super Charged W11B16 Mini Cooper	CR4600XP			MB5667SI**	
47	1.8L SOHC/DOHC 8v/16v M40B18, M42B18, M43B18	CR4042XP		MB5082XP		
48	1.9L SOHC/DOHC 8v/16v M43B19, M44B19	CR4042XP		MB5082XP		
49	2.0L DOHC 16v S14B20	CR4596XP				
50	2.0L SOHC/DOHC 12v/24v M20B20, M50B20, M52B20	CR6640XP		MB7039XP		
51	2.2L DOHC 24v M54B22	CR6640XP				
52	2.3L DOHC 16v S14B23	CR4596XP				
53	2.3L SOHC 12v M20B23	CR6640XP		MB7039XP		
54	2.5L DOHC 16v S14B25	CR4596XP				
55	2.5L SOHC/DOHC 12v/24v M20B25, M50B25, M52B25, M54B25	CR6640XP		MB7039XP		
56	2.7L SOHC/DOHC 12v/24v M20B27, M50B27	CR6640XP		MB7039XP		
57	3.0L DOHC 24v M54B30	CR6640XP				
58	3.0L DOHC 24v S50B30 Euro	CR6854XP		MB7039XP		
59	3.0L DOHC 24v S50B30 Euro - for USA	CR6640XP		MB7039XP		
60	3.2L DOHC 24v S50B32	CR6853XP		MB7039XP		
61	3.2L DOHC 24v S52B32	CR6640XP		MB7039XP		
62	3.2L DOHC 24v S54B32	CR6877XP		MB7039XP		

\*\* Normal street bearings



Engine	Conrod Bearing Set XP Series	Conrod Bearing Set HP Series	Main Bearing Set XP Series	Main Bearing Set HP Series	Thrustwasher Set	Cam bearings set
<b>CHRYSLER</b>						
63	2.4L 146 DOHC 16v EDZ SRT4 ('02-'05)	CR4256XP		MB5270XP		
64	3.5L 215 OHV 12v	CR6672XP		MB7723XP		
65	4.0L 245 OHV 12v	CR6672XP		MB7723XP		
66	4.3L 265 OHV 12v	CR6672XP		MB7723XP		
67	4.5L 273 OHV 16v V8	CR 805XPN		MB 558XP		CS 512HP
68	5.2L 318 OHV 16v V8	CR 805XPN		MB 558XP		CS 512HP
69	5.6L 340 OHV 16v V8	CR 805XPN		MB 558XP		CS 512HP
70	5.7L 345 OHV 16v V8 Hemi ('03->)	CR8032XPN		MB5659XP		TW1003AM
71	5.7L 350 OHV 16v V8	CR 806XPND	CR 806HPND		MB 555HP	
72	5.9L 360 OHV 16v V8	CR 805XPN				
73	5.9L 361 OHV 16v V8	CR 806XPND	CR 806HPND		MB 555HP	
74	6.1L 370 OHV 16v V8 Hemi ('05->)	CR8032XPN		MB5659XP		TW1003AM
75	6.3L 383 OHV 16v V8	CR 806XPND	CR 806HPND		MB 555HP	
76	6.4L 392 OHV 16v V8 Hemi	CR8032XP				
77	6.6L 400 OHV 16v V8	CR 806XPND	CR 806HPND		MB 555HP	
78	6.7L 413 OHV 16v V8	CR 806XPND	CR 806HPND			
79	7.0L 426 OHV 16v V8	CR 806XPND	CR 806HPND	MB5116XP	MB5116HP	CS 533HP
80	7.0L 426 OHV 16v V8 Hemi	CR 806XPND	CR 806HPND	MB5116XP	MB5116HP	CS 533HP
81	7.2L 440 OHV 16v V8	CR 806XPND	CR 806HPND	MB5116XP	MB5116HP	CS 533HP
<b>FORD</b>						
82	1.3L OHV 8v 273SE, 711M X Flow, 751M	CR 410XP		MB 512XP		
83	1.5L, 1.6L OHV 8v 116E Lotus	CR 410XP		MB 512XP		
84	1.6L/1.7L BDA, BDB, BDC, BDD	CR4540XP		MB 512XP		
85	2.0L DOHC 16v YB	CR4440XP		MB5672XP		TW2022CP
86	2.0L DOHC 16v Duratec	CR4515XP (for 47mm journal)		MB5442XP		
87	2.3L DOHC 16v Duratec	CR4507XP (for 50mm journal)		MB5442XP		
88	2.0L, 2.3L DOHC 16v EcoBoost	CR4604XP (for 52mm journal)		MB5442XP		
89	2.3L 140 Inline 4 SOHC 8v 2300 Stroker			MB 582XP (-> '90, for 2.591" housing bore) MB5278XP ('89->, for 2.397" housing bore)		
90	2.3L 144 OHV 12v Inline 6 Falcon	CR 618XP				
91	2.8L 170 OHV 12v Inline 6 Falcon	CR 618XP				
92	3.0L 188 OHV 12v Inline 6 Falcon	CR 618XP				
93	3.3L 200 OHV 12v Inline 6	CR 618XP		MB7703XP		
94	3.9L 250 OHV 12v Inline 6	CR 618XP		MB7703XP		
95	4.0L DOHC 24v (Incl. Turbo) Inline 6	CR 618XP		MB7063XP		
96	4.0L SOHC 12v EB-ED, EF-EL	CR 618XP		MB7703XP		
97	4.0L SOHC 12v Intech	CR 618XP		MB7063XP		
98	4.2L 260 OHV 16v V8	CR 804XPN	CR 804HPN	MB 529XP	MB 529HP	CS 514HP CS 514HPT
99		CR 804XPND				
100	4.6L SOHC 16v Cast Iron Block, Romeo Vin W ('91-'10), X ('96-'04), V ('06-'10)	CR 868XPN	CR 868HPN	MB5353XP (upper shell centered lug)	MB5353HP	lower flange1 thrustwasher CS 604BB
101	4.6L SOHC 16v WindsorVin 6 ('96-'03), W ('93-'10), X ('96-'04)	CR 868XPN	CR 868HPN	MB5280XP	MB5280HP	set includes 3 thrustwashers CS 604BB
102	4.6L SOHC 24v Aluminum BlockVin 8 ('06-'10), H ('05-'10)	CR 868XPN	CR 868HPN	MB5283XP (upper shell offset lug)	MB5283HP	lower flange1 thrustwasher CS 604BB
103	4.6L DOHC 32v Aluminum BlockVin H, R, V, Y ('96-'05)	CR 868XPN	CR 868HPN	MB5283XP (upper shell offset lug)	MB5283HP	lower flange1 thrustwasher CS 605BB (DOHC up to '96) CS 606BB (96->)CS 514HP
104	4.7L 289 OHV 16v V8	CR 804XPN CR 804XPND	CR 804HPN	MB 529XP	MB 529HP	CS 514HP CS 514HPT
105	5.0L 302 OHV 16v V8 Windsor	CR 804XPN CR 804XPND	CR 804HPN	MB 529XP	MB 529HP	CS 514HP CS 514HPT
106	5.0L 302 DOHC 32v V8 Coyote ('11-'13)	CR 868XPN	CR 868HPN	MB5734XP		
107	5.4L SOHC 16v WindsorVin 3 ('99-'04), L ('97-'10), Z ('98-'04)	CR 868XPN	CR 868HPN	MB5280XP	MB5280HP	set includes 3 thrustwashers
108	5.4L SOHC 24v WindsorVin 5 ('04-'10), V ('06-'10)	CR 868XPN	CR 868HPN	MB5280XP	MB5280HP	set includes 3 thrustwashers
109	5.4L DOHC 32v In Tech WindsorVin A ('99-'02), R ('01-'04)	CR 868XPN	CR 868HPN	MB5280XP	MB5280HP	set includes 3 thrustwashers
110	5.7L 351 OHV 16v V8 Cleveland	CR 813XPN		MB5503XP	MB5503HP	CS 516HP
111	5.7L 351 OHV 16v V8 Windsor	CR 814XPN		MB5505XP (77-'88)		CS 514HP CS 514HPT
112	6.2L 377 OHV 16v V8 Cleveland Stroker	CR8005XP		MB5503XP	MB5503HP	
113	7.0L 429		CR 874HP	MB5650XP (multi-bored)	MB5650HP (multi-bored)	CS 517HP CS 517HPT
114	7.5L 460		CR 874HP	MB5650XP (multi-bored)	MB5650HP (multi-bored)	CS 517HP CS 517HPT

\*\* Normal street bearings



Engine	Conrod Bearing Set XP Series	Conrod Bearing Set HP Series	Main Bearing Set XP Series	Main Bearing Set HP Series	Thrustwasher Set	Cam bearings set
<b>GENERAL MOTORS</b>						
115	2.0L, 2.2L, 2.4L 16v DOHC Ecotec	CR4363XP			MB5413SI **	
116	3 3L 200 12v V6	CR6618XP				
117	3.8L 229 12v V6 GNX	CR6664XP				
118	265, 283, 302, 327 OHV 16v V8 ('62-'67) Small journal	CR 803XPN CR 803XPND	CR 803HPN	MB 554XP		CS 507HP CS 507HPT
119	262, 265, 267, 302, 305, 307, 327, 350 OHV 16v V8 Small Block ('68-'96) Large journal	CR 807XPN CR 807XPND	CR 807HPN CR 807HPND	MB 557XP	MB 557HP	CS 507HP CS 507HPT
120	348, 409 OHV 16v V8	CR 808XPN CR 808XPND	CR 808HPN CR 808HPND			
121	LS series 4.8L OHV 16v Vortec 5 3L OHV 16v Vortec 5.7L OHV 16v 6.0L OHV 16v (also Vortec) 6 2L OHV 16v (also Vortec)	CR 807XPN	CR 807HPN	MB5013XP	MB5013HP	CS5503HP CS5503HPT ('97-'02) CS5510HP CS5510HPT ('03-'10) CS5171HP CS5171HPT ('06-'13 0.775" wide)
122	Dart LS Next Block	CR 807XPN	CR 807HPN	MB5777XP		CS5172HP CS5172HPT
123	325, 350, 389, 400 Pontiac 3" main			MB5511XP	MB5511HP	
124	400 OHV 16v V8 Small Block	CR 807XPN CR 807XPND	CR 807HPN CR 807HPND	MB 509XP	MB 509HP	CS 507HP CS 507HPT
125	366, 396, 402, 454, 502 OHV 16v V8 Big Block	CR 808XPN CR 808XPND	CR 808HPN CR 808HPND	MB 556XP	MB 556HP	MB1124HP (flanged bearing pair) CS 524HP CS 524HPT
<b>HOLDEN</b>						
126	138 OHV 12v Red Motor	CR6649XP				
127	149 OHV 12v Red Motor	CR6649XP				
128	161 OHV 12v Red Motor	CR6649XP				
129	173 OHV 12v Red Motor	CR6649XP				
130	179 OHV 12v	CR6649XP				
131	186 OHV 12v Red Motor	CR6649XP				
132	174 OHV 12v Blue Motor	CR6649XP		MB7704XP		
133	202 OHV 12v Red Motor	CR6649XP		MB7704XP		
134	202 OHV 12v Blue/Black Motor	CR6649XP		MB7704XP		
135	204 3.3L OHV 12v Holden LG7	CR6664XP		MB5737XP (set contains additional lower shells to fit different applications)		
136	231 3.8L OHV 12v Holden LN3, L27, L36, L67, L32	CR6664XP		MB5737XP (set contains additional lower shells to fit different applications)		
137	253 OHV 16v Red Motor	CR8007XP		MB5381XP		
138	253 OHV 16v Blue Motor	CR8007XP		MB5381XP		
139	308 OHV 16v Red Motor	CR8007XP		MB5381XP		
140	308 OHV 16v Blue Motor	CR8007XP		MB5381XP		
141	305 5.0L OHV 16v	CR8007XP		MB5381XP		
142	308 5.0L EFI OHV 16v	CR8007XP		MB5381XP		
143	348 OHV 16v EFI Stroker	CR8007XP		MB5381XP		
144	348 OHV 16v Gen III LS1	CR 807XPN		MB5013XP	MB5013HP	
145	355 OHV 16v Stroker	CR 807XPN		MB5381XP		
146	6.0L OHV 16v Gen IV L76	CR 807XPN		MB5013XP	MB5013HP	
147	6.0L OHV 16v Gen IV L98	CR 807XPN		MB5013XP	MB5013HP	
148	6.0L OHV 16v Gen IV LS2	CR 807XPN		MB5013XP	MB5013HP	
149	6 2L OHV 16v Gen IV LS3	CR 807XPN		MB5013XP	MB5013HP	
<b>HONDA</b>						
150	1 5L SOHC 8v/16v D15B, D15Z	CR4046XP				
151	1.6L DOHC 16v B16A	CR 439XP CR 439XPDP		MB5259XP		TW 140AM
152	1.6L SOHC/DOHC 16v D16A, D16B	CR4046XP		MB5568XP		TW 140AM
153	1.6L SOHC 16v D16W	CR4046XP		MB5568XP		TW 140AM
154	1.6L SOHC/DOHC 16v D16Y, D16Z	CR4046XP		MB5568XP		TW 140AM
155	1.6L SOHC/DOHC 8v/16v ZC	CR4046XP		MB5568XP		TW 140AM
156	1.7L DOHC 16v B17A1	CR 439XP CR 439XPDP		MB5259XP		TW 140AM
157	1.7L SOHC 16v D17A, D17Z			MB5568XP		TW 140AM
158	1.8L SOHC 12v A18A	CR 439XP CR 439XPDP		MB5168XP (for 50mm journal)		
159	1.8L DOHC 16v B18A	CR 439XP CR 439XPDP		MB5259XP		TW 140AM

\*\* Normal street bearings



Engine		Conrod Bearing Set XP Series	Conrod Bearing Set HP Series	Main Bearing Set XP Series	Main Bearing Set HP Series	Thrustwasher Set	Cam bearings set
<b>HONDA</b>							
160	1.8L DOHC 16v B18A1	CR 439XP CR 439XPD		MB5259XP		TW 140AM	
161	1.8L DOHC 16v B18B1, B18B2	CR 439XP CR 439XPD		MB5259XP		TW 140AM	
162	1.8L DOHC VTEC 16v B18C1, B18C5	CR4287XP		MB5259XP		TW 140AM	
163	1.9L SOHC 12v ES, ET	CR 439XP CR 439XPD		MB5259XP		TW 140AM	
164	1.9L SOHC 16v F18B	CR 439XP CR 439XPD					
165	2.0L SOHC 12v A20A	CR 439XP CR 439XPD		MB5168XP (for 50mm journal)			
166	2.0L SOHC 12v B20A3	CR 439XP		MB5568XP		TW 140AM	
167	2.0L DOHC 16v B20A5, B21A1	CR4033XP		MB5568XP		TW 140AM	
168	2.0L DOHC 16v B20B3, B20B8	CR 439XP		MB5259XP		TW 140AM	
169	2.0L DOHC 16v B20B4, B20Z2	CR4046XP		MB5259XP		TW 140AM	
170	2.0L SOHC 16v F20B	CR 439XP					
171	2.0L DOHC 16v F20C	CR4033XP		MB5673XP		TW 140AM	
172	2.0L DOHC 16v K20A2, K20Z1	CR4542XP CR4542XPD		MB5259XP		TW 140AM	
173	2.0L DOHC 16v K20A3	CR4541XP		MB5259XP		TW 140AM	
174	2.1L DOHC 16v B21A1	CR4033XP		MB5568XP		TW 140AM	
175	2.2L DOHC 16v F22C	CR4033XP		MB5673XP		TW 140AM	
176	2.2L DOHC 16v H22A4, H22Z	CR4033XP		MB5568XP		TW 140AM	
177	2.2L DOHC 16v H22A1	CR4033XP		MB5168XP (for 50mm journal)		TW 152AM	
178	2.2L SOHC 16v F22A1, F22A4, F22B1, F22B2, F22B6, F22A6	CR4033XP		MB5168XP (for 50mm journal)		TW 152AM	
179	2.3L DOHC 16v H23A1	CR4033XP		MB5168XP (for 50mm journal)		TW 152AM	
180	2.3L SOHC 16v F23A, F23Z	CR4541XP		MB5568XP		TW 140AM	
181	2.4L DOHC 16v K24A, K24Z1	CR4542XP CR4542XPD		MB5259XP		TW 140AM	
<b>JAGUAR</b>							
182	2.8L XJ6	CR 697XP		MB 788XP			
183	3.4L XK6	CR 697XP		MB 788XP			
184	3.8L MK, XK	CR 697XP		MB 788XP			
185	4.2L XJ	CR 697XP		MB 771XP			
<b>LANCIA</b>							
186	2.0L 8v/16v Delta HF Integrale	CR4601XP		MB5730XP			
<b>MAZDA</b>							
187	1.5L DOHC 16v ZL-VE	CR4002XP		MB5304XP		TW 133AM	
188	1.5L DOHC 16v Z5-DE			MB5304XP		TW 133AM	
189	1.6L SOHC 8v B6, B6F	CR4002XP		MB5304XP		TW 133AM	
170	1.6L DOHC 16v B6D	CR4002XP		MB5304XP		TW 133AM	
171	1.6L DOHC 16v Turbo B6-T	CR4002XP		MB5304XP		TW 133AM	
172	1.6L SOHC 16v B6-2E/ME	CR4002XP		MB5304XP		TW 133AM	
173	1.6L DOHC 16v ZM-DE	CR4002XP		MB5304XP		TW 133AM	
174	1.6L DOHC ZMD	CR4002XP		MB5304XP		TW 133AM	
175	1.8L SOHC 16v BP	CR4002XP		MB5304XP		TW 133AM	
176	1.8L DOHC 16v BP-T	CR4002XP		MB5304XP		TW 133AM	
177	1.8L DOHC 16v BPD	CR4002XP		MB5304XP		TW 133AM	
178	1.8L DOHC 16v BP-Z3	CR4002XP		MB5304XP		TW 133AM	
179	1.8L DOHC 16v Turbo BP-Z3T	CR4002XP		MB5304XP		TW 133AM	
180	1.8L DOHC 16v BP-4W	CR4002XP		MB5304XP		TW 133AM	
181	1.8L DOHC 16v BP-ZE	CR4002XP		MB5304XP		TW 133AM	
182	2.0L DOHC 16v LF MZR	CR4515XP (for 47mm journal)		MB5442XP			
183	2.3L DOHC 16v L3-VDT MZR DISI Turbo Duratec	CR4604XP (for 52mm journal)		MB5442XP			
184	2.3L DOHC 16v Duratec, MZR L3V, MZR L3X, Duratec Hybrid	CR4507XP (for 50mm journal)		MB5442XP			
<b>MITSUBISHI</b>							
185	1.5L DOHC 16v 4G91	CR4119XP		MB5176XP		TW 143AM	
186	1.6L SOHC 8v 4G32/G32B	CR4481XP		MB5227XP			
187	1.6L DOHC 16v (Incl. Turbo) 4G61, 4G61-T	CR4481XP		MB5227XP			
188	1.6L SOHC/DOHC 16v 4G92	CR4119XP		MB5176XP		TW 143AM	
189	1.7L SOHC 8v 4G35	CR4481XP		MB5227XP			
190	1.8L SOHC 8v 4G37	CR4481XP		MB5227XP			
191	1.8L SOHC/DOHC (Incl. Turbo) 4G93, 4G93-T	CR4119XP		MB5176XP		TW 143AM	
192	1.8L SOHC 8v (Incl. Turbo) 4G62/G62B, G62BT	CR4481XP		MB5227XP			
193	1.8L SOHC 8v Diesel 4D65	CR4481XP		MB5227XP			
194	1.8L SOHC 8v Turbo Diesel 4D65-T	CR4481XP		MB5227XP			
195	2.0L SOHC 8v Diesel 4D68	CR4120XP		MB5315XP			
196	2.0L 4G63 (->92)	CR4481XP		MB5227XP			

\*\* Normal street bearings





Engine		Conrod Bearing Set XP Series	Conrod Bearing Set HP Series	Main Bearing Set XP Series	Main Bearing Set HP Series	Thrustwasher Set	Cam bearings set
<b>MITSUBISHI</b>							
197	2.0L 4G63 EVO I-IV ('92->)	CR4120XP		MB5209XP (with flanged brg)			
				MB5315XP		TW 173AM	
198	2.0L 4G63 EVO V-IX ('97-'07)	CR4120XP		MB5315XP		TW 173AM	
199	2.0L DOHC 16v Turbo 4B11T Evo X ('07->)	CR4586XP		MB5722XP		TW1029AM	
200	2.0L 4G94	CR4607XP		MB5176XP		TW 143AM	
201	2.4L 4G64 EVO I-IV ('92->)	CR4120XP		MB5209XP (with flanged brg)			
				MB5315XP		TW 173AM	
202	2.4L 4G64 EVO V-IX ('97-'07)	CR4120XP		MB5315XP		TW 173AM	
203	2.4L 4G64 (->'92)	CR4481XP		MB5227XP			
204	2.4L DOHC 16v 4G69	CR4120XP		MB5315XP			
<b>NISSAN</b>							
205	1.6L DOHC 16v CA16DE	CR 407XP		MB5232XP			
206	1.6L DOHC 16v CA16DET, CA18DET, CA20ET	CR 407XP		MB5232XP			
207	1.6L DOHC 16v CA16DET, CA18DET, CA20ET	CR 407XP		MB5232XP			
208	1.7L SOHC 8v Diesel CD17	CR 407XP		MB5232XP			
209	1.8L DOHC 16V (Incl. Turbo) CA18DE, CA18DET	CR 407XP		MB5232XP			
210	2.0L SOHC 8v CA20E, CA20S	CR 407XP		MB5232XP			
211	2.0L SOHC 8v Diesel (Incl. Turbo) CD20, CD20-T			MB5232XP			
212	2.0L DOHC 24v (Incl. Turbo) RB20DE, RB20DET	CR6752XP		MB7008XP			
213	2.0L DOHC 16v (Incl. Turbo) SR20DE, SR20DET	CR4136XP		MB5243XP		TW 139AM	
214	2.0L SR20DET (GTiR), 16v	CR4587XP		MB5721XP			
215	2.4L DOHC 16v KA24DE / 2.4L SOHC 12V KA24E	CR6752XP		MB7008XP			
216	2.4L DOHC 12V KA24DE	CR4065XP		MB5595XP			
217	2.5L DOHC 24v (Incl. Turbo) RB25DET, RB25DETT	CR6697XP		MB7008XP			
218	2.5L DOHC 24v VQ25DE, VQ25DET	CR6752XP		MB7008XP			
219	2.6L DOHC 24v Turbo RB26DETT	CR6697XP		MB7092XP			
220	3.0L SOHC 12v (Incl. Turbo) RB30E, RB30ET	CR6676XP		MB7008XP			
221	3.0L DOHC 24v VQ30DE, VQ30DET	CR6752XP		MB7008XP			
222	3.0L SOHC 12v VG30i	CR6676XP		MB4104XP			
223	3.0L DOHC 24v Twin Turbo VG30DETT	CR6676XP		MB4104XP			
224	3.3L SOHC 12v VG33E	CR6676XP		MB4104XP			
225	3.5L DOHC 24v VQ35DE	CR6775XP		MB4058XP		TW 271AM	
226	3.5L VQ35HR			MB4524XP		TW1042AM	
227	3.7L VQ37VHR			MB4524XP		TW1042AM	
228	3.8L DOHC 24v Twin Turbo VR38DETT	CR6870XP		MB4524XP		TW1042AM	
229	4.5L VK45DD, VK45DE			MB5770XP			
230	5.6L VK56DE, VK56VD			MB5770XP			
<b>OPEL</b>							
231	1.6L SOHC 8v 16N, 16SH	CR4017XP		MB5179XP			
232	1.6L SOHC 8v Diesel 16D, 16DA	CR4017XP		MB5179XP			
233	1.7L SOHC 8v Diesel 17D, 17DR	CR4017XP		MB5179XP			
234	1.8L 18SV	CR4017XP		MB5179XP			
235	1.8L SOHC 8v 18E, 18N, 18NV, 18S, 18SE, 18SEH	CR4017XP		MB5179XP			
236	1.8L SOHC 8v C18NE, C18NV, C18NT, C18NZ	CR4017XP		MB5179XP			
237	1.8L DOHC 16v C18XE, C18XEL	CR4017XP		MB5179XP			
238	1.8L SOHC 8v E18NV, E18NVR	CR4017XP		MB5179XP			
239	1.8L SOHC 8v S18NV	CR4017XP		MB5179XP			
240	1.8L DOHC 16v X18XE	CR4017XP		MB5179XP			
241	2.0L SOHC 16v C20SED	CR4017XP		MB5179XP			
242	2.0L SOHC 8v 20SE, 20SEH, 20SER, C20NE, C20LE, LT2, LT3	CR4017XP		MB5179XP			
243	2.0L DOHC 16v 20XE	CR4017XP		MB5179XP			
244	2.0L DOHC 16v Turbo C20LET	CR4017XP		MB5179XP			
245	2.0L DOHC 16v C20XE	CR4017XP		MB5179XP			
246	2.0L DOHC 16v X20SE, X20XEV, X20SED	CR4017XP		MB5179XP			
247	2.2L DOHC 16v C22SEL	CR4017XP		MB5179XP			
248	2.2L DOHC 16v X22SE, X22XE	CR4017XP		MB5179XP			
249	2.2L DOHC 16v Y22SE	CR4017XP		MB5179XP			
<b>PEUGEOT</b>							
250	1.3L SOHC 8v TU 2.4, TU2J2	CR4493XP			MB5569AM**		
251	1.4L SOHC 8v TU3A, TU3CP, TU3M, TU3S	CR4493XP			MB5569AM**		
252	1.4L SOHC 8v TU3.2, TU3J2/Z, TU3JP ('88->)	CR4493XP		MB5729XP			
253	1.4L SOHC 8v TU3JP ('05->)			MB5729XP			
254	1.4L SOHC 8v XY6B, XY7, XY8	CR4493XP			MB5508AM**		
255	1.5L SOHC 8v Diesel TUD5			MB5729XP			
256	1.6L SOHC/DOHC 8v/16v TU5J2, TU5J4, TU5JP, TU5JP4	CR4493XP		MB5729XP			
257	1.6L SOHC 8v XU5J, XU5JP	CR4493XP		MB5729XP			
258	1.8L DOHC 16v EW7J4	CR4603XP			MB5760SI**		
259	1.8L SOHC 8v XU7JB, XU7JP	CR4603XP			MB5760SI**		
260	1.8L DOHC 16v XU7JP4	CR4603XP			MB5760SI**		
261	1.9L SOHC 8v XU92C, XU9S	CR4602XP			MB5182AM**		
262	2.0L DOHC 16v EW10A, EW10D, EW10J4, EW10J4S	CR4603XP			MB5760SI**		

\*\* Normal street bearings



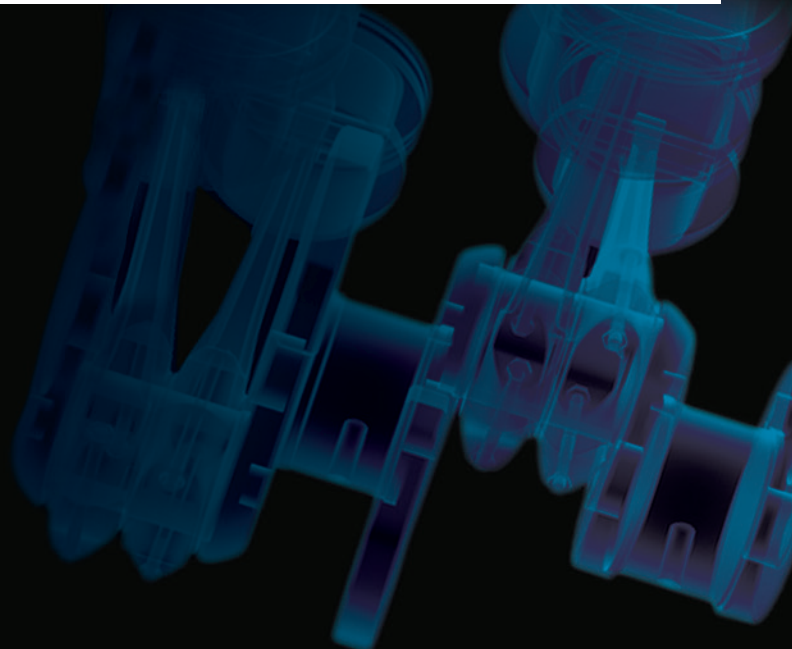
Engine		Conrod Bearing Set XP Series	Conrod Bearing Set HP Series	Main Bearing Set XP Series	Main Bearing Set HP Series	Thrustwasher Set	Cam bearings set
<b>PEUGEOT</b>							
263	2.2L DOHC 16v EW12J4	CR4603XP			MB5760SI**		
264	2.0L DOHC 16v XU10J4, XU10J4RS, XU10J4TE	CR4602XP			MB5129AM**		
265	2.0L SOHC 8v XU102C, XU10J2, XU10J2TE, XU10M	CR4602XP			MB5129AM**		
<b>PORSCHE</b>							
266	2.0L OHC (inc. Turbo) 911, 914	CR6855XP					
267	2.2L OHC 911	CR6855XP					
<b>RENAULT</b>							
268	1.2L SOHC 8v 129-5/XZ7R R14	CR4493XP			MB5508AM**		
269	1.4L SOHC 8v 150-X5J R14	CR4493XP			MB5508AM**		
270	1.7L SOHC 8v F1N, F2N	CR4019XP		MB5180XP			
271	1.7L SOHC 8v F2R	CR4019XP		MB5180XP			
272	1.7L SOHC 8v F3N	CR4019XP		MB5180XP			
273	1.8L SOHC 8v F3P	CR4019XP		MB5180XP			
274	2.0L SOHC 8v F3R	CR4019XP		MB5180XP			
275	1.8L DOHC 16v F7P	CR4019XP		MB5180XP			
276	2.0L DOHC 16v F7R	CR4019XP		MB5180XP			
277	1.6L SOHC 8v Diesel F8M	CR4019XP		MB5180XP			
278	1.9L SOHC 8v Diesel, Turbo Diesel F8Q	CR4019XP		MB5180XP			
<b>SAAB</b>							
279	2.0L B204, B205	CR4606XP		MB5732XP			
280	2.3L B234, B235	CR4606XP		MB5732XP			
<b>SUBARU</b>							
281	2.0L DOHC 16v (Incl. Turbo) EJ20 WRX/STI	CR4125XPG (for 52mm journal)		MB5382XPG (flange in position 5) MB5739XPG (housing bore + .002") MB5740XPG (housing bore + .005")			
		CR4280XP (for 48mm journal)		MB5220XP (flange in position 3)			
282	2.0L 16v FA20	CR4616XPG		MB5745XPG MB5800XPG (housing bore + .002") MB5799XPG (housing bore + .005")			
283	2.0L 16v FB20	CR4622XP		MB5745XPG MB5800XPG (housing bore + .002") MB5799XPG (housing bore + .005")			
284	2.2L SOHC 16v/DOHC 16v (Incl. Turbo) EJ22 WRX/STI	CR4125XPG (for 52mm journal)		MB5382XPG (flange in position 5) MB5739XPG (housing bore + .002") MB5740XPG (housing bore + .005")			
		CR4280XP (for 48mm journal)		MB5220XP (flange in position 3)			
285	2.5L SOHC 16v/DOHC 16v (Incl. Turbo) EJ25 WRX/STI	CR4125XPG (for 52mm journal)		MB5382XPG (flange in position 5) MB5739XPG (housing bore + .002") MB5740XPG (housing bore + .005")			
		CR4280XP (for 48mm journal)		MB5220XP (flange in position 3)			
286	3.0L DOHC 24v EZ30, EZ30D	CR6874XP		MB7772XP			
<b>SUZUKI</b>							
287	1.3L SOHC 8v G13A	CR4605XP		MB5731XP		TW 134AM	
288	1.3L DOHC 16v G13B	CR4605XP		MB5731XP		TW 134AM	
289	1.3L SOHC 16v G13BB	CR4605XP		MB5731XP		TW 134AM	
290	1.3L SOHC 8v G13BA	CR4605XP		MB5731XP		TW 134AM	
291	1.5L DOHC 16v M15A	CR4594XP		MB5727XP			
292	1.6L DOHC 16v M16A	CR4594XP		MB5727XP			
293	1.8L DOHC 16v M18A	CR4594XP		MB5727XP			

\*\* Normal street bearings



Engine	Conrod Bearing Set XP Series	Conrod Bearing Set HP Series	Main Bearing Set XP Series	Main Bearing Set HP Series	Thrustwasher Set	Cam bearings set
<b>TOYOTA</b>						
294	1 3L SOHC 8 v 2A, 2A-LC			MB5527XP		TW 231AM
295	1.4L DOHC 16v 6A-FC			MB5527XP		TW 231AM
296	1 5L SOHC 8 v 3A, 3A-C, 3A-U			MB5527XP		TW 231AM
297	1 5L DOHC 16v 5A-F, 5A-FE			MB5527XP		TW 231AM
298	1.6L SOHC 8v 4A-C, 4A-LC			MB5527XP		TW 231AM
299	1.6L DOHC 16v 4A-F, 4A-FE			MB5527XP		TW 231AM
300	1.6L DOHC 16v/20v 4A-GE	CR4032XP		MB5527XP		TW 231AM
301	1.6L DOHC 16v 4A-GEC, 4A-GELC	CR4032XP		MB5527XP		TW 231AM
302	1.6L DOHC 16v Supercharged 4A-GZE	CR4032XP		MB5527XP		TW 231AM
303	1.8L SOHC 8v 1S			MB5554XP		TW 226AM
304	1.8L DOHC 16v 4S-FE			MB5554XP		TW 226AM
305	1.8L DOHC 16v 7A-FE			MB5527XP		TW 231AM
306	1.8L DOHC 16v 2ZZ-GE	CR4608XP		MB5375XP		TW 185AM
307	2.0L 4U-GSE	CR4616XPG		MB5745XPG MB5800XPG (housing bore + .002") MB5799XPG (housing bore + .005")		
308	2.0L SOHC 8v 2S, 2S-E			MB5554XP		TW 226AM
309	2.0L DOHC 16v 3S-FC, 3S-FE			MB5554XP		TW 226AM
310	2.0L DOHC 16v (Incl. Turbo) 3S-GE, 3S-GTE	CR4209XP		MB5554XP		TW 226AM
311	2 2L DOHC 16v 5S-FE			MB5554XP		TW 226AM
312	2 5L DOHC 24v (Incl. Twin Turbo) 1JZ-GE, 1JZ-GTE	CR6754XP		MB7084XP		TW 284AM
313	3.0L DOHC 24v (Incl. Twin Turbo) 2JZ-GE, 2JZ-GTE	CR6754XP		MB7084XP		TW 284AM
314	4.0L DOHC 32v 1UZ-FE	CR 888XP		MB5286XP		
315	4 3L DOHC 32v 3UZ-FE	CR 888XP		MB5286XP		
316	4 5L DOHC 24v 1FZ-FE	CR6727XP		MB7049XP		
317	4.7L DOHC 32v 2UZ-FE	CR 888XP		MB5286XP		
<b>VOLKSWAGEN</b>						
318	See under AUDI/VOLKSWAGEN					
<b>VOLVO</b>						
319	2.0L SOHC 8v (Incl. Turbo) B200	CR4599XP				
320	2.0L DOHC 16v (Incl. Turbo) B204	CR4599XP				
321	2 3L SOHC 8v (Incl. Turbo) B230	CR4599XP				
322	2 3L DOHC 16v B234	CR4599XP				
<b>CUSTOM</b>						
323	IHC Tractor 5 9L DT361	CR1629XP		MB7747XP		
324	IHC Tractor 6.7L DT407	CR1629XP		MB7747XP		
325	1.888" Rod Journal w/ 0.792" length	CR8028XP				
326	327 Crank Journal w/ 350 rod	CR 867XPN				
327	6 2L 377 OHV 16v V8 Cleveland Stroker- 2.100" pin w/ .712" width	CR8005XP				
328	400 Spacer Bearing (use Chevy 350 crank in 400)				MB5224AM (spacer set)	

\*\* Normal street bearings



# INTERCHANGE LIST:

ACL	KING
1B2500H	CR1649XP
1B663H	CR 807HPN
4B1060H	CR4540XP
4B1110H	CR4595XP
4B1146H	CR4481XP
4B1185H	CR4120XP
4B1236H	CR4586XP
4B1490H	CR4042XP
4B1568H	CR4596XP
4B1606H	CR4104XP
4B1609H	CR4597XP
4B1630H	CR 407XP
4B1780H	CR4032XP
4B1856H	CR4608XP
4B1906H	CR4541XP
4B1912H	CR4033XP
4B1925H	CR4287XP
4B1946H	CR 439XP
4B1956H	CR4046XP
4B1972H	CR4542XP
4B2010H	CR4606XP
4B2166H	CR4440XP
4B2322H	CR4017XP
4B2726H	CR4599XP
4B2902H	CR4600XP
4B2903H	CR4537XP
4B2904H	CR4601XP
4B2960H	CR4136XP
4B2976H	CR4587XP
4B4390H	CR4515XP
4B603H	CR 410XP
4B7700H	CR4602XP
4B7712H	CR4493XP
4B7736H	CR4603XP
4B7820H	CR4019XP
4B8036H	CR4119XP
4B8170H	CR4507XP
4B8172H	CR4604XP
4B8296H	CR4125XPG
4B8320H	CR4280XP
4B8336H	CR4605XP
4B8351H	CR4002XP
4B8366H	CR4209XP
4B8440H	CR4594XP
6B1227H	CR6618XP
6B1490H	CR6640XP
6B1497H	CR6853XP
6B1515H	CR6854XP
6B2150H	CR 618XP
6B2306H	CR6664XP
6B2380H	CR6649XP
6B2390H	CR6676XP
6B2452H	CR6855XP
6B2630H	CR6752XP
6B2640H	CR6775XP
6B2960H	CR6697XP
6B7990H	CR6727XP
6B8100H	CR6754XP
8B1227H	CR8005XP
8B1442H	CR 868XPN
8B1663H	CR8028XP
8B1808H	CR8032XPN
8B2356H	CR8007XP
8B481H	CR 805XPN
8B527HD	CR 806HPND
8B527HD	CR 806XPND
8B634H	CR 804XPN
8B663H	CR 807XPN
8B663HD	CR 807XPND
8B743H	CR 808XPN
8B743HD	CR 808XPND
8B745H	CR 803XPN
8B8091H	CR 888XP
8B818H	CR 874HP

ACL	KING
8B831H	CR 814XPN
8B927H	CR 813XPN
1M2505H	MB1271XP
4SM2222H	MB5737XP
4M2633H	MB4058XP
4M2737H	MB4104XP
5M1010	MB5503HP
5M1010H	MB5503XP
5M1038H	MB 509XP
5M1039H	MB5650XP
5M1112H	MB 511XP
5M1117H	MB 582XP
5M1144H	MB5227XP
5M1186H	MB5209XP
5M1219H	MB5315XP
5M1237H	MB5722XP
5M1432H	MB5505XP
5M1538H	MB5578XP
5M1538H	MB5082XP
5M1633H	MB5232XP
5M1644H	MB5566XP
5M1695H	MB5527XP
5M1743H	MB5278XP
5M1857H	MB5375XP
5M1913H	MB5673XP
5M1957H	MB5568XP
5M1959H	MB5259XP
5M2015H	MB5732XP
5M2152H	MB 512XP
5M2167H	MB5672XP
5M2220H	MB5699XP
5M2232A	MB5413SI
5M2357H	MB5381XP
5M2797H	MB5729XP
5M2908H	MB5730XP
5M2964H	MB5243XP
5M2975H	MB5721XP
5M2995H	MB5770XP
5M429H	MB 554XP
5M5647H	MB5283XP
5M590H	MB 529XP
5M7296H	MB5280XP
5M7298H	MB5013XP
5M7807H	MB5180XP
5M8037H	MB5176XP
5M8092H	MB5286XP
5M8297H	MB5220XP
5M829H	MB 556XP
5M8309H	MB5382XPG
5M8337H	MB5731XP
5M8353H	MB5304XP
5M8361H	MB5554XP
5M8443H	MB5727XP
5M896H	MB5116HP
5M896H	MB5116XP
5M909H	MB 557XP
7M1532H	MB7039XP
7M2092H	MB7063XP
7M2158H	MB7703XP
7M2394H	MB7008XP
7M2428H	MB7092XP
7M8103H	MB7084XP
1T1219	TW 173AM
1T1853	TW 185AM
1T1937	TW 152AM
1T1957	TW 140AM
1T2964	TW 139AM
1T611S	TW1003AM
1T8037	TW 143AM
1T8337	TW 134AM
1T8353	TW 133AM
2T1644	TW2010AM
2T1689	TW 226AM
2T1695	TW 231AM
2T2633	TW 271AM
2T8103	TW 284AM





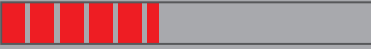





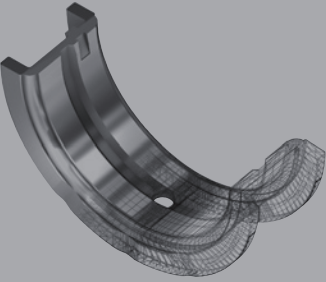


CLEVITE	KING
CB-1120HN x4	CR4481XP
CB-1353H x4	CR 439XP
CB-1426H x4	CR4104XP
CB-1442H x8	CR 868XPN
CB-1453H	CR4002XP
CB-1461HN x4	CR4046XP
CB-1512M	CR 863HPN
CB-1628H x6	CR6754XP
CB-1629H x4	CR4136XP
CB-1629H x6	CR6697XP
CB-1643H x4	CR4120XP
CB-1657H x4	CR4125XPG
CB-1663H x8	CR8028XP
CB-1780H x4	CR4033XP
CB-1785H x4	CR4287XP
CB-1808HN	CR8032XPN
CB-1838H	CR4507XP
CB-1840H	CR4515XP
CB-1856HN x8	CR 867XPN
CB-1861H x4	CR4542XP
CB-1918H x4	CR4586XP
CB-481HN x8	CR 805XPN
CB-527HD x8	CR 806XPND
CB-527HND x8	CR 806HPND
CB-634H x8	CR 804XPN
CB-663HN	CR 807HPN
CB-663H x8	CR 807XPN
CB-663HD x8	CR 807XPND
CB-663HN x8	CR 807XPN
CB-663HND x8	CR 807XPND
CB-743H x8	CR 808HPN
CB-743HD x8	CR 808XPND
CB-743HN x8	CR 808XPN
CB-745H x8	CR 803XPN
CB-818H x8	CR 874HP
CB-831HN x8	CR 814XPN
CB-927HN	CR 813XPN
MS-1010H	MB5503XP
MS-1038H	MB 509XP
MS-1039V	MB5650XP
MS-1432H	MB5505XP
MS-1564P	MB5224AM
MS-1795H	MB5116HP
MS-1795M	MB5116XP
MS-1802H	MB5304XP
MS-1804H	MB5568XP
MS-2007H	MB5353XP
MS-2014H	MB7084XP
MS-2015H	MB5243XP
MS-2039H	MB5209XP
MS-2095H	MB5259XP
MS-2198H	MB5283HP
MS-2199H	MB5013XP
MS-2202H	MB5280XP
MS-2220H	MB5659XP
MS-2232AL	MB5413SI
MS-2258H	MB5382XPG
MS-2259H	MB5283XP
MS-2261H	MB5315XP
MS-2307H	MB5722XP
MS-2309H	MB5673XP
MS-2321H	MB5777XP
MS-429H	MB 554XP
MS-483P	MB5511HP
MS-540H	MB 558XP
MS-590H	MB 529XP
MS-829H	MB 556HP
MS-829H	MB 556XP
MS-909H	MB 557XP
S-2245H	MB5442XP
TW-340S	TW2009AM
TW-455S	TW 134AM
TW-472S	TW 133AM
TW-587S	TW 152AM
TW-611S	TW1003AM
TW-683S	TW 185AM





## HP SERIES

## XP SERIES

		
Metal Structure	Bimetal aluminum Silicon alloy	Trimetal Copper lead
Competition Type	For applications requiring a harder than Babbitt top layer to better resist extrusion & material migration (drag racing, monster truck, tractor pull). Also for all other applications using nodular cast iron crankshafts.	Circle track, drag racing, off-shore, others using steel crankshafts.
Load Characteristics	High load/short duration or medium load/long duration	High load/long duration
Melting Temperature	 450° F	 350° F
Load Capacity		
Conformability/Embedability		
Anti Seizure		
		





1 Bearing types:

- MB - Main bearing set
- CR - Con rod bearing set
- CS - Camshaft bearing set
- TW - Thrust washer set

2 Number of pairs in a set

3 Random code

4 Material construction:

Main & Rod bearing suffixes

- HP - Bi-metal aluminum silicon alloy
- XP - Tri-metal copper lead

Thrustwasher suffix

- AM - Aluminum based material

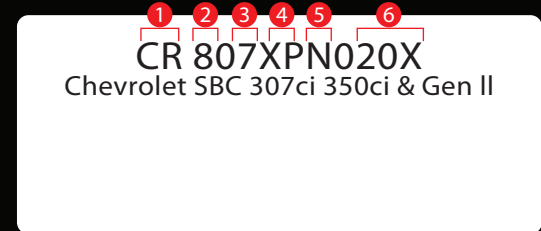
Cam bearing suffix

- BB - Lead base Babbitt material
- HP - Micro Babbitt chill cast & burnished construction
- HPT - HP construction with fluoropolymer coating

5 Bearing features:

- N - narrowed
- D - dowel

6 Dimension/undersize e.g "STD" for standard, X equals .001" extra clearance



Dimension sizes:

Bearing size inches	STDX	STD	.001"	010X	.010"	.011"	020X	.020"	.021"	.030"
Bearing size metric	STDX	STD	.025		0.25			0.5		0.75
Crankshaft undersize	0	0	0	-.010"	-.010"	-.010"	-.020"	-.020"	-.020"	-.030"
Additional shell thickness (on nominal)	-.0005"	0	+.0005"	+.0045"	+.005"	+.0055"	+.0095"	+.010"	+.0105"	+.015"

