

# KENWOOD

**KDC-X397**  
**KDC-355U**  
**KDC-255U**  
**KDC-155U**

**KDC-MP255U**  
**KDC-MP155U**  
**KMR-355U**

CD-RECEIVER

## **INSTRUCTION MANUAL**

AMPLI-TUNER LECTEUR DE CD

## **MODE D'EMPLOI**

REPRODUCTOR DE DISCOS COMPACTOS RECEPTOR DE FM/AM

## **MANUAL DE INSTRUCCIONES**

JVC KENWOOD Corporation



**Take the time to read through this instruction manual.**

**Familiarity with installation and operation procedures will help you obtain the best performance from your new CD-receiver.**

### **For your records**

Record the serial number, found on the back of the unit, in the spaces designated on the warranty card, and in the space provided below. Refer to the model and serial numbers whenever you call upon your Kenwood dealer for information or service on the product.

Model KDC-X397/ KDC-355U/ KDC-255U/ KDC-155U/ KDC-MP255U/ KDC-MP155U/ KMR-355U Serial number \_\_\_\_\_

***US Residents Only***

# CONTENTS

<b>BEFORE USE</b>	<b>2</b>
<b>BASICS</b>	<b>3</b>
<b>GETTING STARTED</b>	<b>4</b>
<b>RADIO</b>	<b>5</b>
<b>CD / USB / iPod</b>	<b>6</b>
<b>AUX</b>	<b>7</b>
<b>PANDORA®</b> (for <b>KDC-X397</b> / <b>KDC-355U</b> / <b>KDC-255U</b> / <b>KDC-155U</b> / <b>KMR-355U</b> )	<b>8</b>
<b>SiriusXM™</b> (for <b>KDC-X397</b> / <b>KDC-355U</b> / <b>KMR-355U</b> )	<b>8</b>
<b>AUDIO SETTINGS</b>	<b>10</b>
<b>DISPLAY SETTINGS</b>	<b>11</b>
<b>MORE INFORMATION</b>	<b>11</b>
<b>TROUBLESHOOTING</b>	<b>12</b>
<b>SPECIFICATIONS</b>	<b>13</b>
<b>INSTALLATION / CONNECTION</b>	<b>14</b>

## How to read this manual

- Operations explained mainly using buttons on the faceplate.
- [XX] indicates the selected items.
- (→ XX) indicates references are available on the stated page number.

# BEFORE USE

## ⚠ Warning

Do not operate any function that takes your attention away from safe driving.

## ⚠ Caution

Volume setting:

- Adjust the volume so that you can hear sounds outside the car to prevent accident.
- Lower the volume before playing digital sources to avoid damaging the speakers by the sudden increase of the output level.

General:

- Avoid using the USB device or iPod/iPhone if it might hinder driving safety.
- Make sure all important data has been backed up. We shall bear no responsibility for any loss of recorded data.
- Never put or leave any metallic objects (such as coins or metal tools) inside the unit, to prevent a short circuit.
- If a disc error occurs due to condensation on the laser lens, eject the disc and wait for the moisture to evaporate.

Remote control (RC-406):

- Do not leave the remote control in hot places such as on the dashboard.
- The Lithium battery is in danger of explosion if replaced incorrectly. Replace it only with the same or equivalent type.
- The battery pack or batteries shall not be exposed to excessive heat such as sunshine, fire or the like.
- Keep battery out of reach of children and in original package until ready to use. Dispose of used batteries promptly. If swallowed, contact a physician immediately.

CALIFORNIA, USA ONLY

This perchlorate WARNING applies only to the product sold or distributed in California USA "Perchlorate Material—special handling may apply, See [www.dtsc.ca.gov/hazardouswaste/perchlorate](http://www.dtsc.ca.gov/hazardouswaste/perchlorate)."

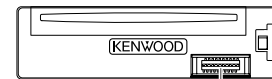
## Maintenance

**Cleaning the unit:** Wipe off dirt on the faceplate with a dry silicon or soft cloth.

**Cleaning the connector:** Detach the faceplate and clean the connector with a cotton swab gently, being careful not to damage the connector.

**Handling discs:**

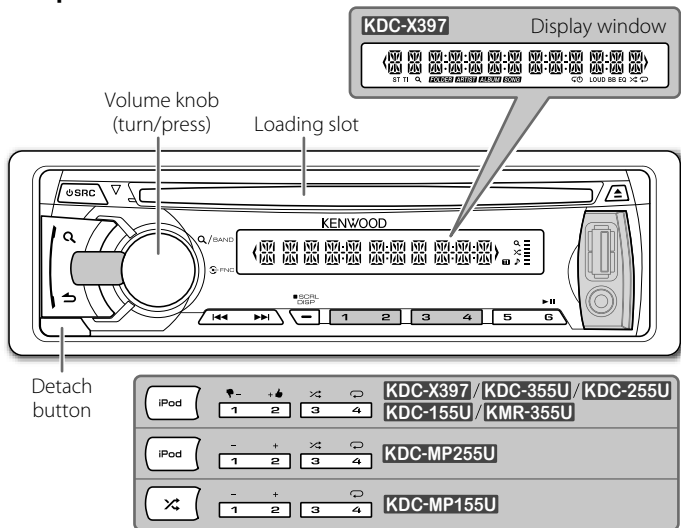
- Do not touch the recording surface of the disc.
- Do not stick tape etc. on the disc, or use a disc with tape stuck on it.
- Do not use any accessories for the disc.
- Clean from the center of the disc and move outward.
- Clean the disc with a dry silicon or soft cloth. Do not use any solvents.
- When removing discs from this unit, pull them out horizontally.
- Remove burrs from the center hole and disc edge before inserting a disc.



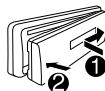
Connector (on the reverse side of the faceplate)

# BASICS

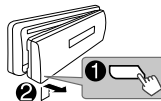
## Faceplate



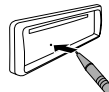
### Attach



### Detach



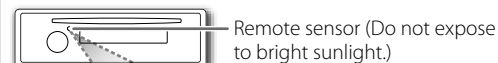
### How to reset



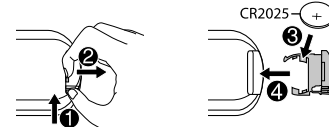
Your preset adjustments will also be erased.

## Remote control (RC-406)

(not supplied for **KMR-355U**)



### How to replace the battery

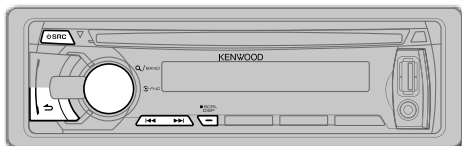


To	Do this (on the faceplate)	Do this (on the remote control)
Turn on the power	Press <b>SRC</b> . • Press and hold to turn off the power.*1	Press and hold <b>SRC</b> to turn off the power. (Pressing <b>SRC</b> does not turn on the power.)
Adjust the volume	Turn the volume knob.	Press <b>VOL</b> $\wedge$ or <b>VOL</b> $\vee$ .  Press <b>ATT</b> during playback to attenuate the sound. • Press again to cancel.
Select a source	Press <b>SRC</b> repeatedly.	Press <b>SRC</b> repeatedly.
Change the display information*2	Press <b>SCRL DISP</b> repeatedly. • Press and hold to scroll the current display information.	(not available)

\*1 For **KMR-355U**: The power will automatically turn off after 20 minutes when in standby mode (Auto Power Off).

\*2 For **KDC-MP255U** / **KDC-MP155U**: You can also select to turn off the display information by pressing **SCRL DISP** repeatedly.

# GETTING STARTED



## 1 Cancel the demonstration

When you turn on the power (or after you reset the unit), the display shows: "CANCEL DEMO" → "PRESS" → "VOLUME KNOB"

- 1 Press the volume knob.  
[YES] is selected for the initial setup.
- 2 Press the volume knob again.  
"DEMO OFF" appears.

For **[KMR-355U]**, [DEMO OFF] is selected initially.

## 2 Set the clock

- 1 Press the volume knob to enter [FUNCTION].
- 2 Turn the volume knob to select [SETTINGS], then press the knob.
- 3 Turn the volume knob to select [CLOCK], then press the knob.
- 4 Press the volume knob to select [CLOCK ADJUST]/ [CLOCK ADJ].
- 5 Turn the volume knob to adjust the hour, then press the knob.
- 6 Turn the volume knob to adjust the minute, then press the knob.  
Press ◀/▶ to move between the hour and minute adjustment.
- 7 Press and hold ↵ to exit.

(or)

Press and hold **SCRL DISP** to enter clock adjustment mode directly while in clock display screen.  
Then, perform steps **5** and **6** above to set the clock.

## 3 Set the initial settings

- 1 Press **SRC** to enter [STANDBY].
- 2 Press the volume knob to enter [FUNCTION].
- 3 Turn the volume knob to select [INITIAL SET], then press the knob.
- 4 Turn the volume knob to make a selection (see the table below), then press the knob.
- 5 Press and hold ↵ to exit.

• To return to the previous hierarchy, press ↵.

Default: **XX**

**PRESET TYPE** **NORMAL/ NORM:** Memorizes one station for each preset button in each band (FM1/ FM2/ FM3/ AM). ; **MIX:** Memorizes one station or SiriusXM channel for each preset button regardless of the selected band or SiriusXM channel.

**KEY BEEP** **ON:** Activates the keypress tone. ; **OFF:** Deactivates.

**PANDORA SRC** (Except for **[KDC-MP255U]**/ **[KDC-MP155U]**)  
**ON:** Enables PANDORA in source selection. ; **OFF:** Disables. (→ 8)

**BUILT-IN AUX/ BUILTIN AUX** **ON:** Enables AUX in source selection. ; **OFF:** Disables. (→ 7)

**CD READ** **1:** Automatically distinguishes between audio file disc and music CD. ; **2:** Forces to play as a music CD. No sound can be heard if an audio file disc is played.

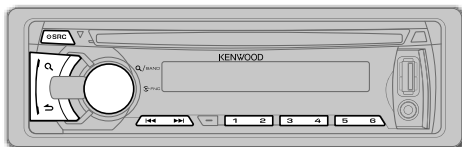
**SWITCH PRE** (Except for **[KDC-X397]**/ **[KDC-355U]**)  
**REAR/ SUB-W:** Selects whether rear speakers or a subwoofer are connected to the line out terminals on the rear (through an external amplifier).

**SP SELECT** **OFF/ 5/4/ 6 × 9/6/ OEM:** Selects according to the speaker size (5 inches or 4 inches, 6×9 inches or 6 inches) or OEM speakers for optimum performance.

## F/W UPDATE

**F/W UP xx.xx** **YES:** Starts upgrading the firmware. ; **NO:** Cancels (upgrading is not activated).  
For details on how to update the firmware, see: [www.kenwood.com/cs/ce/](http://www.kenwood.com/cs/ce/)

# RADIO



## Search for a station

- 1 Press **SRC** to select TUNER.
  - 2 Press **Q** repeatedly (or press **\*AM-** / **#FM+** on RC-406) to select FM1/ FM2/ FM3/ AM.
  - 3 Press **◀▶** to search for a station.
- **To store a station:** Press and hold one of the number buttons (**1** to **6**).
  - **To select a stored station:** Press one of the number buttons (**1** to **6**).

## Direct Access Tuning (using RC-406) (except for [KMR-355U])

- 1 Press **\*AM-** / **#FM+** to select a band.
  - 2 Press **DIRECT** to enter Direct Access Tuning.  
“- - - -” (for FM) or “- - - -” (for AM) appears on the display.
  - 3 Press the number buttons to enter a frequency.
  - 4 Press **◀▶** to search for a frequency.
- To cancel, press **↶**.
  - If no operation is done for 10 seconds after step **3**, Direct Access Tuning is automatically canceled.

## Other settings

- 1 Press the volume knob to enter [FUNCTION].
- 2 Turn the volume knob to select [SETTINGS], then press the knob.
- 3 Turn the volume knob to make a selection (see the table on the right), then press the knob.
- 4 Press and hold **↶** to exit.

Default: **XX**

**SEEK MODE** Selects the tuning method for the **◀▶** buttons.  
**AUTO1:** Automatically searches for a station. ; **AUTO2:** Searches for a preset station. ;  
**MANUAL:** Manually search for a station.

**AUTO MEMORY** **YES:** Automatically starts memorizing 6 stations with good reception. ; **NO:** Cancels.  
(Selectable only if [NORMAL] / [NORM] is selected for [PRESET TYPE].) (→ 4)

**MONO SET** **ON:** Improves the FM reception, but the stereo effect may be lost. ; **OFF:** Cancels.

## For [KDC-MP255U] / [KDC-MP155U]:

**PTY SEARCH** Selects the available Program Type (see below), then, press **◀▶** to start.

**TI** **ON:** Allows the unit to temporarily switch to Traffic Information. ; **OFF:** Cancels.

## CLOCK

**TIME SYNC** **ON:** Synchronizes the unit's time to the Radio Broadcast Data System station time. ;  
**OFF:** Cancels.

**TUNER SET:** Selectable only when the source is not TUNER.

**TI** **ON:** Allows the unit to temporarily switch to Traffic Information. ; **OFF:** Cancels.

- [MONO SET] / [PTY SEARCH] / [TI] is selectable only when the source is FM.
- Available Program Type:  
**SPEECH:** **NEWS, INFORM** (information), **SPORTS, TALK, LANGUAGE, REL TALK** (religious talk), **PERSNLTY** (personality), **PUBLIC, COLLEGE, HABL ESP** (spanish talk), **MUSC ESP** (spanish music), **HIP HOP, WEATHER**
- MUSIC:** **ROCK, CLS ROCK** (classic rock), **ADLT HIT** (adult hits), **SOFT RCK** (softrock), **TOP 40, COUNTRY, OLDIES, SOFT, NOSTALGA** (nostalgia), **JAZZ, CLASSICL** (classical), **R & B** (rhythm and blues), **SOFT R&B** (soft rhythm and blues), **REL MUSC** (religious music)

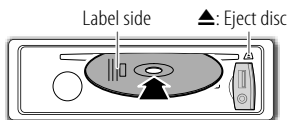
The unit will search for the Program Type categorized under [SPEECH] or [MUSIC] if selected.

- For [KDC-MP255U] / [KDC-MP155U]: If the volume is adjusted during reception of traffic information or alarm, the adjusted volume is memorized automatically. It will be applied the next time traffic information or alarm function is turned on.

# CD / USB / iPod

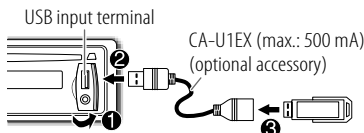
## Start playback

### CD



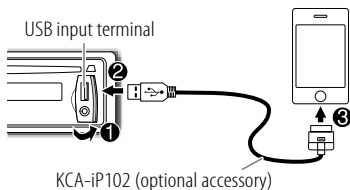
The source changes to CD and playback starts.

### USB



The source changes to USB and playback starts.

### iPod/iPhone (except for [KDC-MP155U])



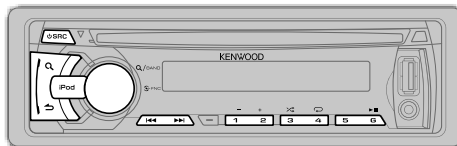
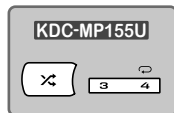
The source changes to iPod and playback starts.

Press and hold **iPod** to select the control mode while in iPod source.

**MODE ON:** From the iPod\*1.

**MODE OFF:** From the unit.

\*1 You can still control play/pause, file selection, fast-forward or reverse files from the unit.



✓ : Applicable  
— : Not applicable

To	Do this	CD	USB	iPod
<b>Pause or resume playback</b>	Press <b>6</b> ► <b>II</b> (or <b>ENT</b> ► <b>II</b> on RC-406).	✓	✓	✓
<b>Select a track/file</b>	Press <b>◀◀</b> / <b>▶▶</b> (or <b>◀◀</b> / <b>▶▶</b> <b>(+)</b> on RC-406).	✓	✓	✓
<b>Select a folder</b>	Press <b>1 - / 2 +</b> (or <b>*AM-</b> / <b>#FM+</b> on RC-406).	✓*2	✓	—
<b>Reverse/Fast-forward</b>	Press and hold <b>◀◀</b> / <b>▶▶</b> (or <b>◀◀</b> / <b>▶▶</b> <b>(+)</b> on RC-406).	✓	✓	✓
<b>Select a track/file from a list</b>	<p><b>1</b> Press <b>Q</b>.</p> <p><b>2</b> Turn the volume knob to make a selection, then press the knob.</p> <ul style="list-style-type: none"> <li>MP3/WMA file: Select the desired folder, then a file.</li> <li>iPod or KENWOOD Music Editor Light (KME Light)/ KENWOOD Music Control (KMC) file*4: Select the desired file from the list (PLAYLISTS, ARTISTS, ALBUMS, SONGS, PODCASTS*5, GENRES, COMPOSERS*5).</li> <li>To return to the root folder (or first file), press number button <b>5</b>.</li> <li>To return to the previous hierarchy, press <b>↶</b>.</li> <li>To cancel, press and hold <b>↶</b>.</li> </ul> <p>To skip songs at a specific ratio, press <b>◀◀</b> / <b>▶▶</b>. (→ <b>7</b>)</p>	✓	✓	✓*3
<b>Repeat play</b>	<p>Press <b>4</b> <b>↺</b> repeatedly.</p> <ul style="list-style-type: none"> <li>Audio CD: TRACK/ TRAC REPEAT, REPEAT OFF</li> <li>MP3/WMA file: FILE REPEAT, FOLDER/ FOLD REPEAT, REPEAT OFF</li> <li>iPod or KME Light/ KMC file: FILE REPEAT, REPEAT OFF</li> </ul>	✓	✓	✓*3
<b>Random play</b>	<p>Press <b>3</b> <b>↻</b> or <b>↻</b> repeatedly.</p> <ul style="list-style-type: none"> <li>Audio CD: DISC RANDOM, RANDOM OFF</li> <li>MP3/WMA/iPod or KME Light/ KMC file: FOLDER/ FOLD RANDOM, RANDOM OFF</li> </ul> <p>Press and hold <b>3</b> <b>↻</b> or <b>↻</b> to select "ALL RANDOM."</p>	✓	✓	✓*3

\*2 Only for MP3/WMA files.

\*3 Applicable only when **[MODE OFF]** is selected.

\*4 Only for files registered in the database created with KME Light/ KMC. (→ **11**)

\*5 Only for iPod.

**Direct Music Search (using RC-406)**(except for **[KMR-355U]**)

- 1 Press **DIRECT**.
- 2 Press the number buttons to enter a track/file number.
- 3 Press **◀◀ / ▶▶ (+)** to search for music.
  - To cancel, press **↵**.
  - Not available if Random Play is selected.
  - Not applicable for iPod, KME Light/ KMC file. (→ 11)

**Select a song by name**(except for **[KDC-MP155U]**)

While listening to iPod...

- 1 Press **Q**.
- 2 Turn the volume knob to select a category, then press the knob.
- 3 Press **Q** again.
- 4 Turn the volume knob to select the character to be searched for.
- 5 Press **◀◀ / ▶▶** to move to the entry position. You can enter up to three characters.
- 6 Press the volume knob to start searching.
- 7 Turn the volume knob to make a selection, then press the knob. Repeat step 7 until the desired item is selected.
  - To search for a character other than A to Z and 0 to 9, enter only **"\*\*"**.
  - To return to the previous hierarchy, press **↵**.
  - To return to the top menu, press number button **5**.
  - To cancel, press and hold **↵**.

**Set the skip ratio**While listening to iPod (except for **[KDC-MP155U]**) or KME Light/ KMC file...

- 1 Press the volume knob to enter **[FUNCTION]**.
- 2 Turn the volume knob to select **[SETTINGS]**, then press the knob.
- 3 Turn the volume knob to select **[SKIP SEARCH]**, then press the knob.
- 4 Turn the volume knob to make a selection, then press the knob.
 

**0.5%** (default)/ **1%**/ **5%**/ **10%**: Sets the skip ratio when searching for a song.  
(Holding **◀◀ / ▶▶** skips songs at 10% regardless of the setting made.)
- 5 Press and hold **↵** to exit.

**Muting upon the reception of a phone call**

Connect the MUTE wire to your telephone using a commercial telephone accessory. (→ 15)

When a call comes in, "CALL" appears.

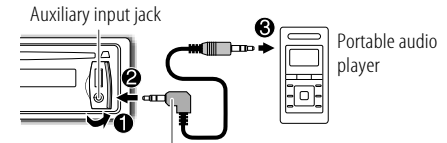
- The audio system pauses.
- To continue listening to the audio system during a call, press **↵ SRC**. "CALL" disappears and the audio system resumes.

When the call ends, "CALL" disappears.

- The audio system resumes.

**Preparation:**Select **[ON]** for **[BUILT-IN AUX]** / **[BUILTIN AUX]**. (→ 4)**Start listening**

- 1 Connect a portable audio player (commercially available).



3.5 mm (1/8") stereo mini plug with "L" shaped connector (commercially available)

- 2 Press **↵ SRC** to select AUX.
- 3 Turn on the portable audio player and start playback.

**Set the AUX name**

While listening to AUX...

- 1 Press the volume knob to enter **[FUNCTION]**.
- 2 Turn the volume knob to select **[SETTINGS]**, then press the knob.
- 3 Turn the volume knob to select **[AUX NAME SET]/ [AUX NAME]**, then press the knob.
- 4 Turn the volume knob to make a selection, then press the knob.
 

**AUX** (default)/ **DVD**/ **PORTABLE**/ **GAME**/ **VIDEO**/ **TV**
- 5 Press and hold **↵** to exit.

# PANDORA®

(for **KDC-X397** / **KDC-355U** / **KDC-255U** / **KDC-155U** / **KMR-355U**)

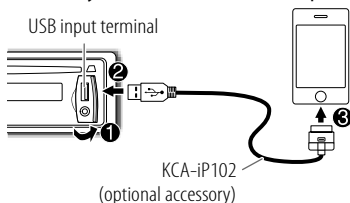
## Preparation:

Install the latest version of the Pandora® application into your device (iPhone/ iPod touch), then log in and create an account with Pandora®.

- Select **[ON]** for **[PANDORA SRC.]** (→ 4)

## Start listening

- 1 Open the Pandora® application on your device.
- 2 Connect your device to the USB input terminal.



The source changes to PANDORA and broadcast starts.

## About Pandora® internet radio

- Pandora® is only available in the US.
- Because Pandora® is a third-party service, the specifications are subject to change without prior notice. Accordingly, compatibility may be impaired or some or all of the services may become unavailable.
- Some functions of Pandora® cannot be operated from this unit.
- For issues using the application, please contact Pandora at [pandora-support@pandora.com](mailto:pandora-support@pandora.com).
- If the version of the OS of the connected iPhone is earlier than 4.0, start the PANDORA internet radio application before selecting the PANDORA source.

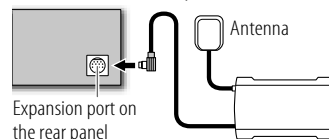
To	Do this
<b>Pause or resume playback</b>	Press <b>6 ►  </b> (or press <b>ENT ►  </b> on RC-406).
<b>Thumbs up or thumbs down</b>	Press <b>1 ♡</b> / <b>2 ♣</b> . <ul style="list-style-type: none"><li>• If thumbs down is selected, the current track is skipped.</li></ul>
<b>Skip a track</b>	Press <b>►►I</b> .
<b>Create a new station</b>	<ol style="list-style-type: none"><li>1 Press and hold the volume knob.</li><li>2 Turn the volume knob to select <b>[FROM TRACK]</b> or <b>[FROM ARTIST]</b>, then press the knob. A new station is created based on the current song or artist.</li></ol>
<b>Save a station</b>	Press and hold number button <b>3</b> , <b>4</b> or <b>5</b> to store. <ul style="list-style-type: none"><li>• To select a stored station, press the same button (<b>3</b>, <b>4</b> or <b>5</b>).</li></ul>
<b>Search for a registered station</b>	<ol style="list-style-type: none"><li>1 Press <b>Q</b>.</li><li>2 Turn the volume knob to make a selection, then press the knob (or press <b>▲</b>/<b>▼</b> on RC-406). <b>[BY DATE]</b>: According to the registered date. <b>[A-Z]</b>: Alphabetical order.</li><li>3 Turn the volume knob to the desired station, then press the knob.</li></ol>

# SiriusXM™

(for **KDC-X397** / **KDC-355U** / **KMR-355U**)

## Preparation:

- 1 Connect the optional SiriusXM Connect Vehicle Tuner (commercially available).



SiriusXM Connect Vehicle Tuner

- 2 Activate the subscription through [www.siriusxm.com/activatenow](http://www.siriusxm.com/activatenow) or call 1-866-635-2349. The Radio ID is required to activate the SiriusXM Connect Vehicle Tuner. The Radio ID is located on the label of the SiriusXM Connect Vehicle Tuner and can also be shown on the unit's display window when you select "Channel 0" after SiriusXM Connect Vehicle Tuner is connected.
- 3 Press **⏻ SRC** to select SIRIUS XM to start updating.

## Start listening

- 1 Press **⏻ SRC** to select SIRIUS XM.
- 2 Press **Q** repeatedly to select a band.
- 3 Press and hold **Q**.
- 4 Turn the volume knob to select a category, then press the knob.  
If "ALL CHANNEL" is selected, all the available channels will be shown.
- 5 Turn the volume knob to select a channel, then press the knob.  
(or)  
Press **I◀◀** / **▶▶I** to search for a channel manually.
  - Pressing and holding **I◀◀** / **▶▶I** changes the channel rapidly.



If a locked channel or a mature channel ([**MATURE CH**] is set to [**ON**]) is selected, a pass code input screen appears. Enter the pass code to receive the channel.

- **To store a channel of the current band:** Press and hold one of the number buttons (**1** to **6**).
- **To select a stored channel of the current band:** Press one of the number buttons (**1** to **6**)

#### Direct Access Tuning (using RC-406) (except for [KMR-355U])

- 1 Press **DIRECT** to enter Direct Access Tuning.
  - 2 Press the number buttons to enter a channel number, then press **◀◀ / ▶▶ (+)** to start searching.
- To cancel, press **↶** or **DIRECT**.

#### Replay

Press **↶**.

Replay starts from the live position (and "⏮" lights up for [KDC-X397]).

During Replay...

- To pause or resume playback, press **6 ▶||**.
- To skip the current song backward/forward, press **◀◀ / ▶▶**.
- To rewind/fast-forward, press and hold **◀◀ / ▶▶**.
- To exit from Replay and go to live, press **↶**.

#### Other settings

- 1 Press the volume knob to enter [FUNCTION].
- 2 Turn the volume knob to select [SETTINGS], then press the knob.
- 3 Turn the volume knob to make a selection (see table on the right), then press the knob.
- 4 Press and hold **↶** to exit.

#### SEEK MODE

Selects the tuning method for the **◀◀ / ▶▶** buttons.

**CHANNEL:** Manually search for a channel. ; **PRESET:** Search for a preset channel of the selected band.

#### CHANNEL LOCK/ CH LOCK

To unlock settings:

- 1 Turn the volume knob to select a number.
- 2 Press **◀◀ / ▶▶** to move to the entry position.
- 3 Repeat steps 1 and 2 to enter the current pass code.  
(Initial pass code is 0000.)
- 4 Press the volume knob to confirm.

#### CODE SET

- 1 Turn the volume knob to select a number.
  - 2 Press **◀◀ / ▶▶** to move to the entry position.
  - 3 Repeat steps 1 and 2 to enter a new 4-digit pass code.
  - 4 Press the volume knob to confirm.
  - 5 Repeat steps 1 to 4 to reconfirm the pass code.
- Make a note of the new pass code to enter channel lock settings from next time.

#### CHANNEL EDIT/CH EDIT \*

- 1 Turn the volume knob to select a category, then press the knob.
- 2 Turn the volume knob to select a channel you want to lock, then press the knob. "L" appears in front of the channel number.
- 3 Press **↶** to exit.

#### CHANNEL CLEAR/CH CLEAR \*

**YES:** Clears all the locked channels. ; **NO:** Cancels.

#### MATURE CH

**ON:** Turns on the Sirius XM-defined lock setting (mature channel). ; **OFF:** Turns off.  
• If [**ON**] is selected, your setting (**CHANNEL EDIT/ CH EDIT**) is temporary ignored.

#### SIGNAL LEVEL/ SIGNAL LVL

**NO SIGNAL/ WEAK/ GOOD/ STRONG:** Shows the strength of the current received signal.

#### BUFFER USAGE/ BUF USAGE

**0% — 100% (0):** Shows the memory usage for Replay buffer.

\* Displayed only when [**MATURE CH**] is set to [**OFF**].

# AUDIO SETTINGS

While listening to any source...

- 1 Press the volume knob to enter [FUNCTION].
  - 2 Turn the volume knob to select [AUDIO CONTROL]/ [AUDIO CTRL], then press the knob.
  - 3 Turn the volume knob to make a selection (see the table below), then press the knob.  
Repeat step 3 until the desired item is selected or activated.
  - 4 Press and hold ↵ to exit.
- To return to the previous hierarchy, press ↵.

Default: **XX**

<b>SUB-W LEVEL</b>	<b>-15 to +15 (0):</b>	Adjusts the subwoofer output level.
<b>BASS LEVEL</b>	<b>-8 to +8 (0):</b>	
<b>MID LEVEL</b>	<b>-8 to +8 (0):</b>	Adjusts the level to memorize for each source. (Before making an adjustment, select the source you want to adjust.)
<b>TRE LEVEL</b>	<b>-8 to +8 (0):</b>	

## EQ PRO (for **KDC-X397**)

<b>BASS ADJUST</b>	<b>BASS CTR FRQ</b>	<b>60/ 80/ 100/ 200:</b> Selects the center frequency.
	<b>BASS LEVEL</b>	<b>-8 to +8 (0):</b> Adjusts the level.
	<b>BASS Q FACTOR</b>	<b>1.00/ 1.25/ 1.50/ 2.00:</b> Adjusts the quality factor.
	<b>BASS EXTEND</b>	<b>ON:</b> Turns on the extended bass. ; <b>OFF:</b> Cancels.
<b>MID ADJUST</b>	<b>MID CTR FRQ</b>	<b>0.5K/ 1.0K/ 1.5K/ 2.5K:</b> Selects the center frequency.
	<b>MID LEVEL</b>	<b>-8 to +8 (0):</b> Adjusts the level.
	<b>MID Q FACTOR</b>	<b>0.75/ 1.00/ 1.25:</b> Adjusts the quality factor.
<b>TRE ADJUST</b>	<b>TRE CTR FRQ</b>	<b>10.0K/ 12.5K/ 15.0K/ 17.5K:</b> Selects the center frequency.
	<b>TRE LEVEL</b>	<b>-8 to +8 (0):</b> Adjusts the level.

**PRESET EQ** **NATURAL/ USER/ ROCK/ POPS/ EASY/ TOP40/ JAZZ/ POWERFUL:** Selects a preset equalizer suitable to the music genre. (Select [USER] to use the customized bass, middle, and treble settings.)

**BASS BOOST** **B.BOOST LV1/ B.BOOST LV2/ B.BOOST LV3:** Selects your preferred bass boost level. ; **OFF:** Cancels.

**LOUDNESS** **LOUDNESS LV1/ LOUD LV1/ LOUDNESS LV2/ LOUD LV2:** Selects your preferred low and high frequencies boost to produce a well-balanced sound at a low volume level. ; **OFF:** Cancels.

**BALANCE** **L15 to R15 (0):** Adjusts the left and right speaker output balance.

**FADER** **R15 to F15 (0):** Adjusts the rear and front speaker output balance.

**SUBWOOFER SET/ SUB-W SET** **ON:** Turns on the subwoofer output. ; **OFF:** Cancels.

## DETAILED SET/ DETAIL SET

**HPF** For **KDC-X397/ KDC-355U:**  
**THROUGH:** All signals are sent to the speakers. ; **100HZ/ 120HZ/ 150HZ:** Audio signals with frequencies higher than 100 Hz/ 120 Hz/ 150 Hz are sent to the speakers.

**LPF SUBWOOFER/ LPF SUB-W** **THROUGH:** All signals are sent to the subwoofer. ; **85HZ/ 120HZ/ 160HZ:** Audio signals with frequencies lower than 85 Hz/ 120 Hz/ 160 Hz are sent to the subwoofer.

**SUB-W PHASE** **REVERSE/ REV (180°)/ NORMAL/ NORM (0°):** Selects the phase of the subwoofer output to be in line with the speaker output for optimum performance. (Selectable only if a setting other than [THROUGH] is selected for [LPF SUBWOOFER]/ [LPF SUB-W].)

**SUPREME SET** **ON:** Creates realistic sound by interpolating the high-frequency components that are lost in MP3/WMA audio compression. ; **OFF:** Cancels. (Selectable only when playing back an MP3/WMA disc or a USB device, except iPhone/iPod.)

**VOLUME OFFSET/ VOL OFFSET** (Default: **0**) **-8 to +8** (for AUX) ; **-8 to 0** (for other sources): Presets the volume adjustment level of each source. (Before adjustment, select the source you want to adjust.)

For **KDC-255U/ KDC-155U/ KDC-MP255U/ KDC-MP155U/ KMR-355U:**

- [SUB-W LEVEL]/ [SUB-W SET]/ [LPF SUB-W]/ [SUB-W PHASE] is selectable only if [SWITCH PRE] is set to [SUB-W]. (→ 4)
- [SUB-W LEVEL]/ [LPF SUB-W]/ [SUB-W PHASE] is selectable only if [SUB-W SET] is set to [ON].

# DISPLAY SETTINGS

- 1 Press the volume knob to enter [FUNCTION].
  - 2 Turn the volume knob to select [SETTINGS], then press the knob.
  - 3 Turn the volume knob to make a selection (see the table below), then press the knob.  
Repeat step 3 until the desired item is selected or activated.
  - 4 Press and hold **↵** to exit.
- To return to the previous hierarchy, press **↵**.

Default: **XX**

## DISP & KEY (for **KDC-X397** / **KDC-355U** / **KDC-255U** / **KDC-MP255U**)

**COLOR SELECT/ COLOR SEL**    **VARIABLE SCAN/ VARI SCAN/ COLOR 01** — **COLOR 24/ USER**: Selects your preferred key illumination color.

You can create your own color (when [COLOR 01] — [COLOR 24] or [USER] is selected). The color you have created can be selected when you select [USER].

- 1 Press and hold the volume knob to enter the detailed color adjustment.
- 2 Press **◀◀** / **▶▶** to select the color (**R** / **G** / **B**) to adjust.
- 3 Turn the volume knob to adjust the level (**0** — **9**), then press the knob.

**DISP DIMMER**    **ON**: Dims the display illumination. ; **OFF**: Cancels.

**TEXT SCROLL**    **AUTO/ ONCE**: Selects whether to scroll the display information automatically, or scroll only once. ; **OFF**: Cancels.

**KEY DIMMER**    **DIMMER LV1**: Dims the key illumination. ; **DIMMER LV2**: Dims the key illumination darker than **DIMMER LV1**. ; **DIMMER OFF**: Cancels.

## DISPLAY (for **KDC-155U** / **KDC-MP155U** / **KMR-355U**)

**DISP DIMMER**    **ON**: Dims the display illumination. ; **OFF**: Cancels.

**TEXT SCROLL**    **AUTO/ ONCE**: Selects whether to scroll the display information automatically, or scroll only once. ; **OFF**: Cancels.

# MORE INFORMATION

## General

- This unit can only play the following CDs:



- Detailed information and notes about the playable audio files are stated in an online manual on the following site:  
[www.kenwood.com/cs/ce/audiofile/](http://www.kenwood.com/cs/ce/audiofile/)

## Playable files

- Playable Audio file: MP3 (.mp3), WMA (.wma)
- Playable disc media: CD-R/RW/ROM
- Playable disc file formats: ISO 9660 Level 1/2, Joliet, Romeo, Long file name.
- Playable USB device file system: FAT16, FAT32  
Although the audio files are complied with the standards listed above, playback maybe impossible depending on the types or conditions of media or device.

## Unplayable discs

- Discs that are not round.
- Discs with coloring on the recording surface or discs that are dirty.
- Recordable/ReWritable discs that have not been finalized.
- 8 cm CD. Attempting to insert using an adapter may cause malfunction.

## About USB devices

- This unit can play MP3/WMA files stored on a USB mass storage class device.
- You cannot connect a USB device via a USB hub and Multi Card Reader.
- Connecting a cable whose total length is longer than 5 m may result in abnormal playback.
- This unit cannot recognize a USB device whose rating is other than 5 V and exceeds 1 A.

## About iPod/iPhone

Made for

- iPod touch (1st, 2nd, 3rd, and 4th generation)
- iPod classic
- iPod with video
- iPod nano (1st, 2nd, 3rd, 4th, 5th, and 6th generation)
- iPhone, iPhone 3G, 3GS, 4, 4S
- For the latest compatible list and software versions of iPhone/iPod, see: [www.kenwood.com/cs/ce/ipod](http://www.kenwood.com/cs/ce/ipod)
- If you start playback after connecting the iPod, the music that has been played by the iPod is played first.  
In this case, "RESUMING" is displayed without displaying a folder name, etc. Changing the browse item will display the correct title, etc.
- You cannot operate iPod if "KENWOOD" or "✓" is displayed on iPod.

## About "KENWOOD Music Editor Light" and "KENWOOD Music Control"

- This unit supports the PC application "KENWOOD Music Editor Light" and Android™ application "KENWOOD Music Control."
- When you use an audio file with database information added using the "KENWOOD Music Editor Light" or "KENWOOD Music Control," you can search for a file by title, album or artist name using Music Search.
- "KENWOOD Music Editor Light" and "KENWOOD Music Control" are available from the following web site:  
[www.kenwood.com/cs/ce/](http://www.kenwood.com/cs/ce/)

# TROUBLESHOOTING

Symptom	Remedy
Sound cannot be heard.	<ul style="list-style-type: none"> <li>Adjust the volume to the optimum level.</li> <li>Check the cords and connections.</li> </ul>
“PROTECT” appears and no operations can be done.	Check to be sure the terminals of the speaker wires are insulated properly, then reset the unit. If this does not solve the problem, consult your nearest service center.
<ul style="list-style-type: none"> <li>Sound cannot be heard.</li> <li>The unit does not turn on.</li> <li>Information shown on the display is incorrect.</li> </ul>	Clean the connectors. (→ 2)
The unit does not work at all.	Reset the unit. (→ 3)
For <b>[KMR-355U]</b> : The Auto Power Off function (that turns the power off after 20 minutes when in standby mode) does not work.	Make sure <b>[OFF]</b> is selected for <b>[DEMO MODE]</b> . (→ 4)
<ul style="list-style-type: none"> <li>Radio reception is poor.</li> <li>Static noise while listening to the radio.</li> </ul>	<ul style="list-style-type: none"> <li>Connect the antenna firmly.</li> <li>Pull the antenna out all the way.</li> </ul>
“NA FILE” appears.	Make sure the disc contains supported audio files. (→ 11)
“NO DISC” appears.	Insert a playable disc into the loading slot.
“TOC ERROR” appears.	Make sure the disc is clean and inserted properly.
“PLS EJECT” appears.	Reset the unit. If this does not solve the problem, consult your nearest service center.
Disc cannot be ejected.	Press and hold <b>▲</b> to forcibly eject the disc. Be careful not to drop the disc when it is ejected. If this does not solve the problem, reset the unit. (→ 3)
“READ ERROR” appears.	Copy the files and folders onto the USB device again. If this does not solve the problem, reset the USB device or use another USB device.
“NO DEVICE” appears.	Connect a USB device, and change the source to USB again.
“COPY PRO” appears.	A copy-protected file is played.
“NO MUSIC” appears.	Connect a USB device that contains playable audio files.
“NA DEVICE” appears.	Connect a supported USB device, and check the connections.
“USB ERROR” appears.	<ul style="list-style-type: none"> <li>Remove the USB device, turn the unit off, then turn it on again.</li> <li>Try to connect another USB device.</li> </ul>

Symptom	Remedy	
“iPod ERROR” appears.	<ul style="list-style-type: none"> <li>Reconnect the iPod.</li> <li>Reset the iPod.</li> </ul>	
Noise is generated.	Skip to another track or change the disc.	
Tracks do not play back as you have intended them to play.	Playback order is determined when files are recorded.	
“READING” keeps flashing.	Do not use too many hierarchical levels or folders.	
Elapsed playing time is not correct.	This is caused by how the tracks are recorded.	
The number of songs contained in the “SONGS” category of this unit is different from the iPod/iPhone.	Podcast files are not counted on this unit as this unit does not support the playback of podcast files.	
Correct characters are not displayed (e.g. album name).	This unit can only display uppercase letters, numbers, and a limited number of symbols.	
Pandora®	<ul style="list-style-type: none"> <li>“ADD ERROR” / “ADD ERR”</li> <li>“SEARCH ERROR” / “SEARCH ERR”</li> </ul>	New station creation is unsuccessful.
	“CHECK DEVICE” / “CHK DEVICE”	Check the Pandora® application on your device.
	“NO SKIPS”	The skip limit has been reached.
	“NO STATIONS”	No station is found.
	“STATION LIMIT” / “STATION LIM”	The number of registered stations has reached its limit. Retry after deleting an unnecessary station on your device.
	“UPGRADE APP”	Make sure you have installed the latest version of the Pandora® application on your device.
SiriusXM™	“CH LOCKED”	The selected channel is locked. Enter the correct pass code to unlock. (→ 9)
	“CHAN UNSUB”	The selected channel is unsubscribed. Call 1-866-635-2349 to subscribe.
	“CHAN UNAVAIL”	The selected channel is unavailable.
	“CHECK ANTENNA” / “CHK ANTENNA”	Check the antenna and its connection are in good condition.
	“CHECK TUNER”	Make sure the SiriusXM Connect Vehicle Tuner is connected to the unit.
	“NO SIGNAL”	Make sure the antenna is mounted outside the vehicle.
“SUBSCRIPTION UPDATED – ENTER TO CONTINUE.” / “SUBSCRIPTN UPDATED – ENTER TO CONTINUE.”	Your subscription is updated. Press the volume knob to continue.	
“WRONG CODE”	Make sure you have entered the correct pass code. (→ 9)	

# SPECIFICATIONS

Tuner	FM	Frequency Range	For <b>KDC-X397</b> / <b>KDC-355U</b> / <b>KDC-255U</b> / <b>KDC-155U</b> / <b>KMR-355U</b> : 87.9 MHz to 107.9 MHz (200 kHz space) For <b>KDC-MP255U</b> / <b>KDC-MP155U</b> : 87.5 MHz to 108.0 MHz (50 kHz space)
		Usable Sensitivity (S/N = 26 dB)	11.2 dBf (1.0 μV/75 Ω)
	Quieting Sensitivity (DIN S/N = 46 dB)	19.2 dBf (2.5 μV/75 Ω)	
	Frequency Response (±3 dB)	30 Hz to 15 kHz	
	Signal-to-Noise Ratio (MONO)	63 dB	
	Stereo Separation (1 kHz)	40 dB	
	AM	Frequency Range	530 kHz to 1 700 kHz (10 kHz space)
	Usable Sensitivity (S/N = 20 dB)	31 dBμ (36 μV)	

CD player	Laser Diode	GaAlAs
	Digital Filter (D/A)	8 times over sampling
	D/A Converter	24 Bit
	Spindle Speed	500 rpm to 200 rpm (CLV)
	Wow & Flutter	Below measurable limit
	Frequency Response (±1 dB)	20 Hz to 20 kHz
	Total Harmonic Distortion (1 kHz)	0.01 %
	Signal-to-Noise Ratio (1 kHz)	For <b>KDC-X397</b> : 110 dB For <b>KDC-355U</b> / <b>KDC-255U</b> / <b>KDC-155U</b> / <b>KDC-MP255U</b> / <b>KDC-MP155U</b> / <b>KMR-355U</b> : 105 dB
	Dynamic Range	90 dB
	MP3 Decode	Compliant with MPEG-1/2 Audio Layer-3
WMA Decode	Compliant with Windows Media Audio	

USB	USB Standard	USB 1.1, USB 2.0 (Full speed)	
	Maximum Supply Current	DC 5 V $\overline{\text{---}}$ 1 A	
	File System	FAT16/ 32	
	MP3 Decode	Compliant with MPEG-1/2 Audio Layer-3	
	WMA Decode	Compliant with Windows Media Audio	
Audio	Maximum Output Power	50 W × 4	
	Full Bandwidth Power	22 W × 4 (at less than 1 % THD)	
	Speaker Impedance	4 Ω to 8 Ω	
	Tone Action	Bass	100 Hz ±8 dB
		Middle	1 kHz ±8 dB
		Treble	12.5 kHz ±8 dB
	Preout Level / Load (CD)	For <b>KDC-X397</b> : 4 000 mV/10 kΩ For <b>KDC-355U</b> / <b>KDC-255U</b> / <b>KDC-155U</b> / <b>KDC-MP255U</b> / <b>KDC-MP155U</b> / <b>KMR-355U</b> : 2 500 mV/10 kΩ	
Preout Impedance	≤ 600 Ω		
Auxiliary	Frequency Response (±3 dB)	20 Hz to 20 kHz	
	Input Maximum Voltage	1 200 mV	
	Input Impedance	10 kΩ	
General	Operating Voltage	14.4 V (11 V to 16 V allowable)	
	Maximum Current Consumption	10 A	
	Installation Size (W × H × D)	182 mm × 53 mm × 160 mm (7-3/16" × 2-1/8" × 6-5/16")	
	Weight	2.65 lbs (1.2 kg)	

Subject to change without notice.

## ⚠ Warning

- The unit can only be used with a 12 V DC power supply, negative ground.
- Disconnect the battery's negative terminal before wiring and mounting.
- Do not connect Battery wire (yellow) and Ignition wire (red) to the car chassis or Ground wire (black) to prevent a short circuit.
- Insulate unconnected wires with vinyl tape to prevent a short circuit.
- Be sure to ground this unit to the car's chassis again after installation.

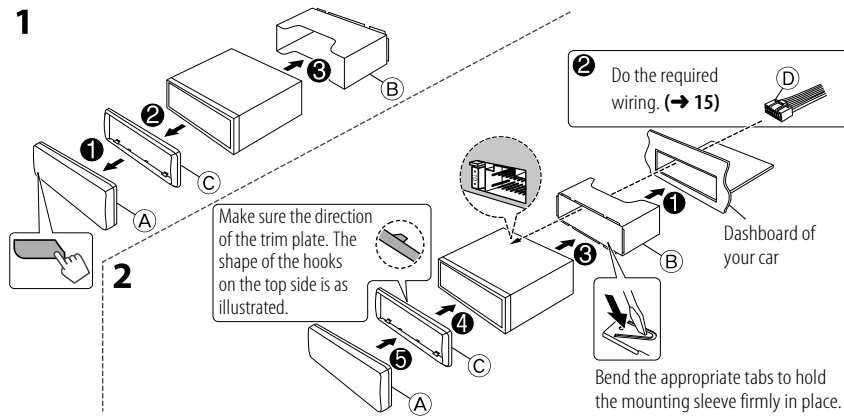
## ⚠ Caution

- For safety's sake, leave wiring and mounting to professionals. Consult the car audio dealer.
- Install this unit in the console of your vehicle. Do not touch the metal parts of this unit during and shortly after use of the unit. Metal parts such as the heat sink and enclosure become hot.
- Do not connect the  $\ominus$  wires of speaker to the car chassis, Ground wire (black), or in parallel.
- Mount the unit with the angle of 30° or less.
- If your vehicle wiring harness does not have the ignition terminal, connect Ignition wire (red) to the terminal on the vehicle's fuse box which provides 12 V DC power supply and is turned on and off by the ignition key.
- After the unit is installed, check whether the brake lamps, blinkers, wipers, etc. on the car are working properly.
- If the fuse blows, first make sure the wires are not touching car's chassis, then replace the old fuse with one that has the same rating.

## Basic procedure

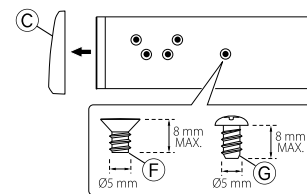
- 1 Remove the key from the ignition switch, then disconnect the  $\ominus$  terminal of the car battery.
- 2 Connect the wires properly.  
See Wiring connection. (→ 15)
- 3 Install the unit to your car.  
See Installing the unit (in-dash mounting).
- 4 Connect the  $\ominus$  terminal of the car battery.
- 5 Reset the unit. (→ 3)

## Installing the unit (in-dash mounting)



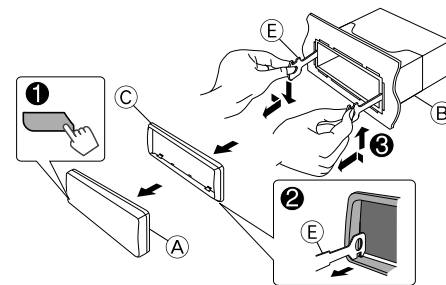
## When installing without the mounting sleeve

- 1 Remove the mounting sleeve and trim plate from the unit.
- 2 Align the holes in the unit (on both sides) with the vehicle mounting bracket and secure the unit with the supplied screws.

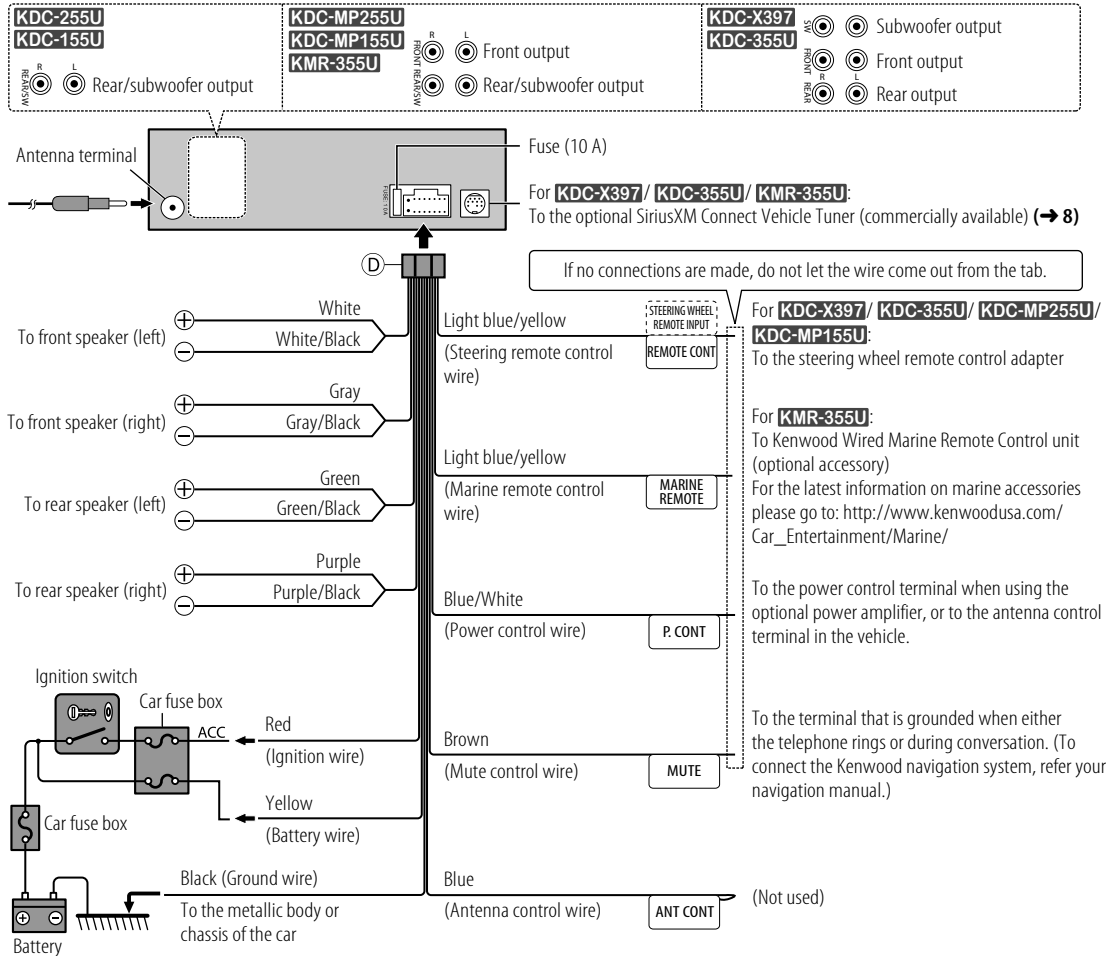


## How to remove the unit

- 1 Detach the faceplate.
- 2 Fit the catch pin on the extraction keys into the holes on both sides of the trim plate, then pull it out.
- 3 Insert the extraction keys deeply into the slots on each side, then follow the arrows as shown on the right.



## Wiring connection



## Part list for installation

- A Faceplate (×1)
- B Mounting sleeve (×1)
- C Trim plate (×1)
- D Wiring harness (×1)
- E Extraction key (×2)
- F Flat head screw (×4)
- G Round head screw (×4)