

Industrial Wheel Lock Ring Tool Set™ #32129

DEMOUNTING INSTRUCTIONS

These tools are designed to remove and replace lock rings on multi-piece industrial wheels. Follow Tire and Wheel Manufacturer's Instructions

If the rings are frozen together, follow steps 1-3.



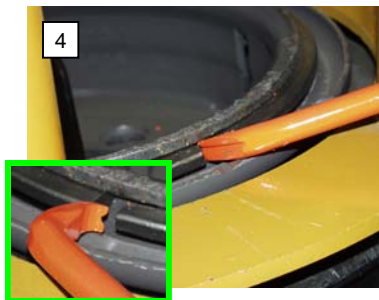
1
 Locate the gap between the ends of the split ring.



2
 Insert the "toe" of the SEPARATOR end between the ends of the split ring.



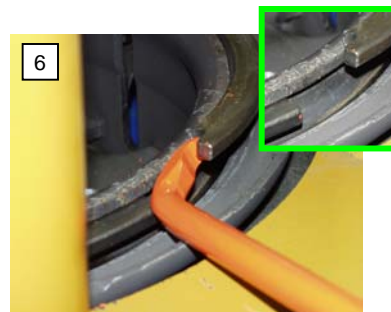
3
 Push down to separate the solid ring from the split ring.



4
 Once the rings are parted, insert the "claws" of the PRY-OUT end behind the slotted end of the split ring.



5
 Pry the slotted end of the split ring out and up until it is resting against the wheel flange.



6
 Raise the ring until it stays in place.



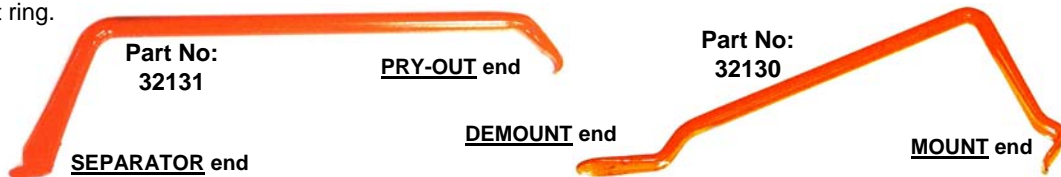
7
 Start demounting the raised end of the split ring by placing the end of the tip of the DEMOUNT end under the split ring.



8
 Push down to pry up, working around the ring until it is demounted.

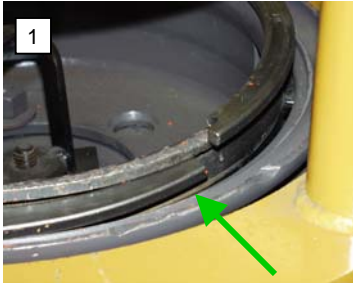


9

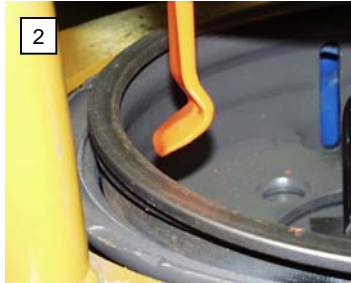


Industrial Wheel Lock Ring Tool Set™ #32129

MOUNTING INSTRUCTIONS



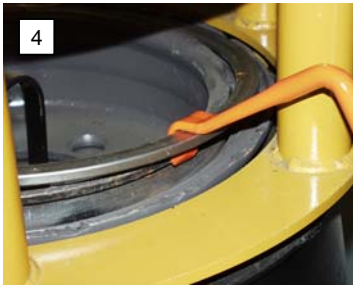
1 Start one end of the split ring in place under the wheel flange.



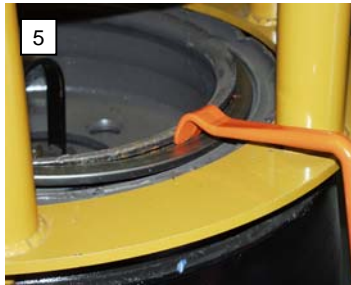
2 The first "bite" should be a little more than half way around from the started end of the split ring.



3 Pull the tool toward you to hook the MOUNT end under the ring from the inside.



4 Push down...



5 ...until the ring snaps into place.



6 Lift up to release the tool.



7 Raise the unmounted portion of the split ring using the SEPARATOR end.



8 Pull the tool toward you to hook the MOUNT end under the ring.



9 Push down.

NOTE: These tools work equally well on pneumatic tires that do not require a press or cage.



WARNING



If you don't know how to use tire changing tools – **STOP!**

Tire changing should only be done by trained persons.

If you do it wrong, you could be hurt or killed.

Here are some Safety Rules.

For complete tire servicing procedures, read the tire and rim makers' service manuals. You can also get

free wall charts about tire servicing by calling

OSHA.

USING TIRE TOOLS

ALWAYS wear eye protection when using hammers and tire irons.

ALWAYS use soft-faced hammers when driving tire irons.

NEVER use one hammer to strike another hammer.

NEVER use a hammer with a loose or cracked handle.

NEVER use a dented, cracked, chipped, or mushroomed tool.

NEVER use a tire tool for anything except mounting/demounting tires.

INFLATING TIRES

NEVER add air to a tire that has been run flat or under inflated.

NEVER hammer, strike, or pry on an inflated tire and rim.

ALWAYS use an inflation cage when inflating tires.

ALWAYS use a clip-on chuck.

ALWAYS use an extension hose with a removable valve and gauge.

NEVER inflate a tire over 40 psi if the tire beads are not seated.

NEVER use starting fluid, ether, gasoline or other flammable liquids to lubricate or seat the beads of a tubeless tire. A gigantic explosion can result.