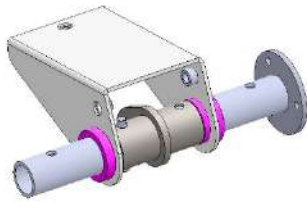




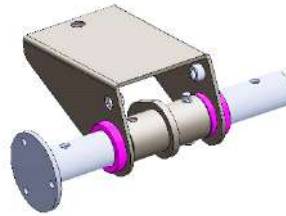
WE PUT EVERYTHING WITHIN REACH.

# Installation Instructions

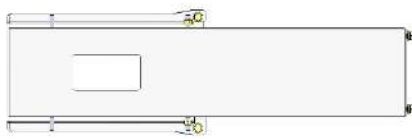
**40983**



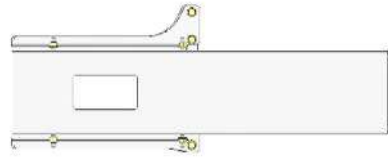
**Front Torque Tube Pivot Assy.**



**Rear Torque Tube Pivot Assy.**



**Front Ladder Pan Assy. (1)**



**Rear Ladder Pan Assy. (1)**



**Ladder Hook(2)**



**Ladder Stop(2)**



**Dampener Mnt Brkt(2)**



**Roller(4)**



**Axle(2)**



**Dampener(2)**



**Torque Tube (1)**



**Ladder Pan Stiffener (1)**



**Handle Assy. (1)**

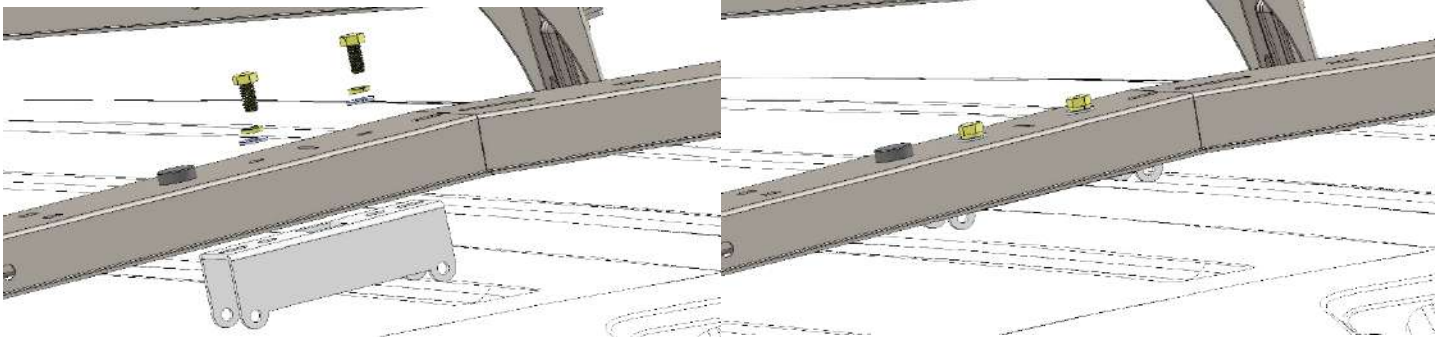


**Handle Removable(1)**

# 40983 Installation Instructions

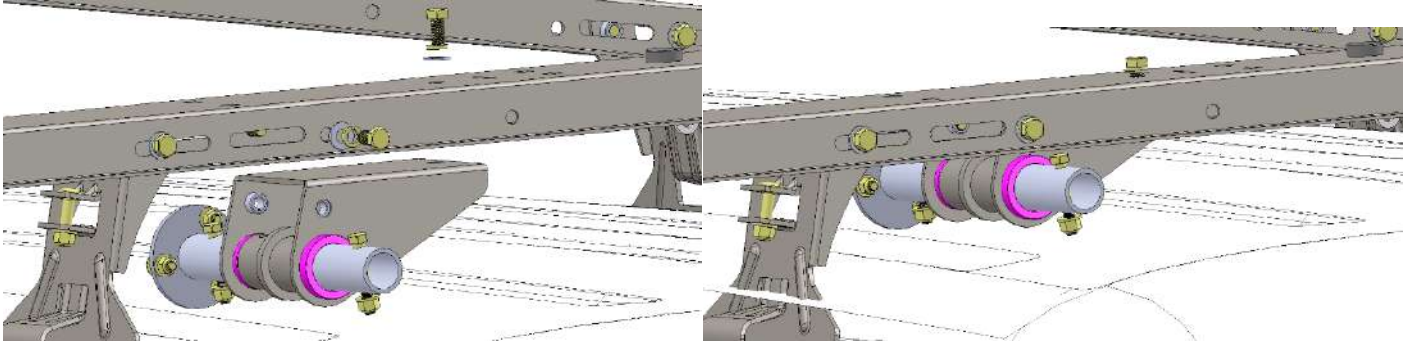
## **Step 1**

Bolt "Dampener mounting bracket" underneath the crossbow (both front and rear) as shown below using 3/8"x3/4 Bolts with flat and lock washers.



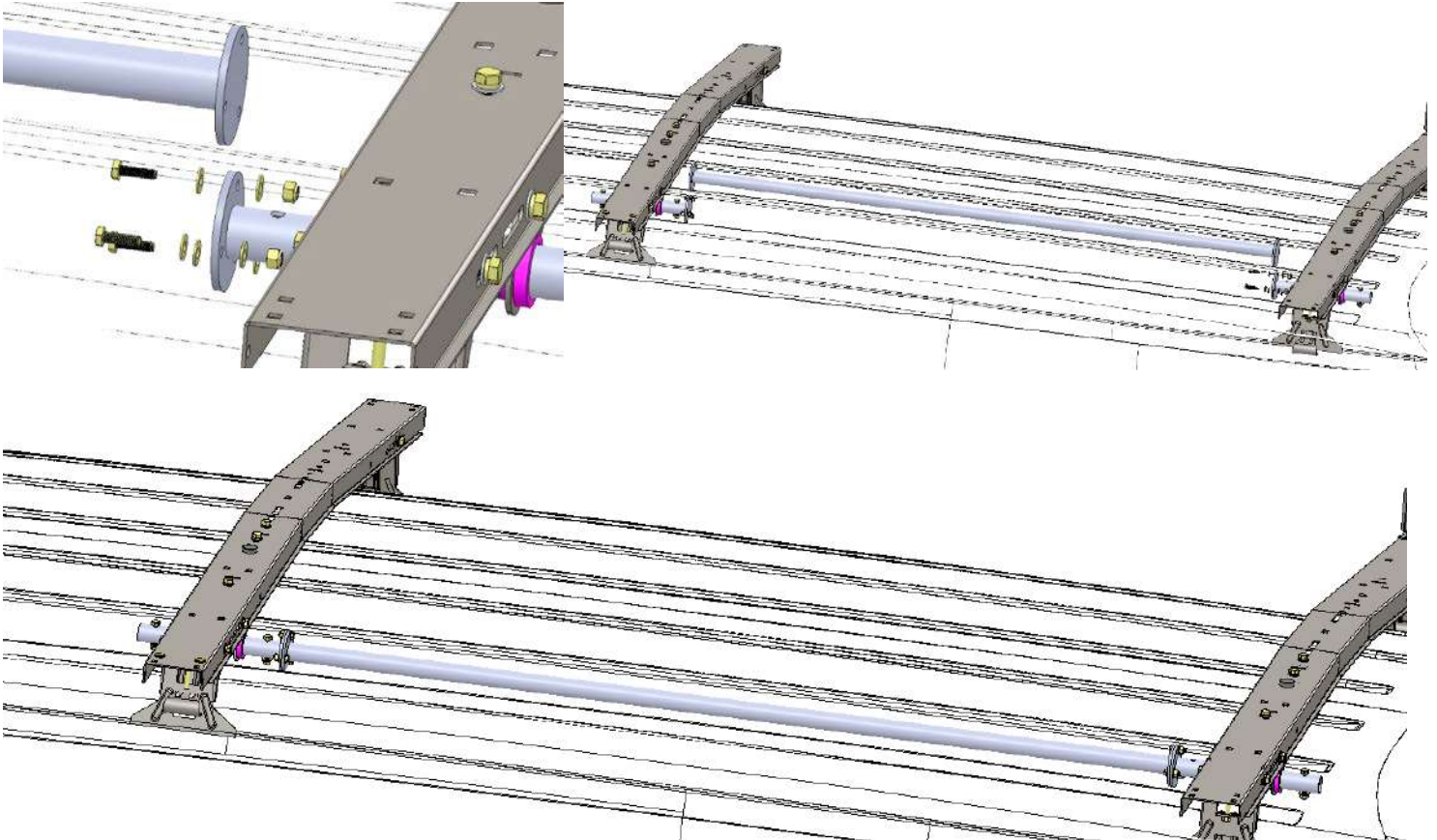
## **Step 2**

Bolt "Torque tube pivot Assy." underneath the crossbow (both front and rear) as shown below using 3/8"x3/4 Bolts with flat and lock washers. Be sure to have the 3 hole flanges facing each other (rear bow shown). You may need to detach the feet and lift the crossbow slightly to get into place.



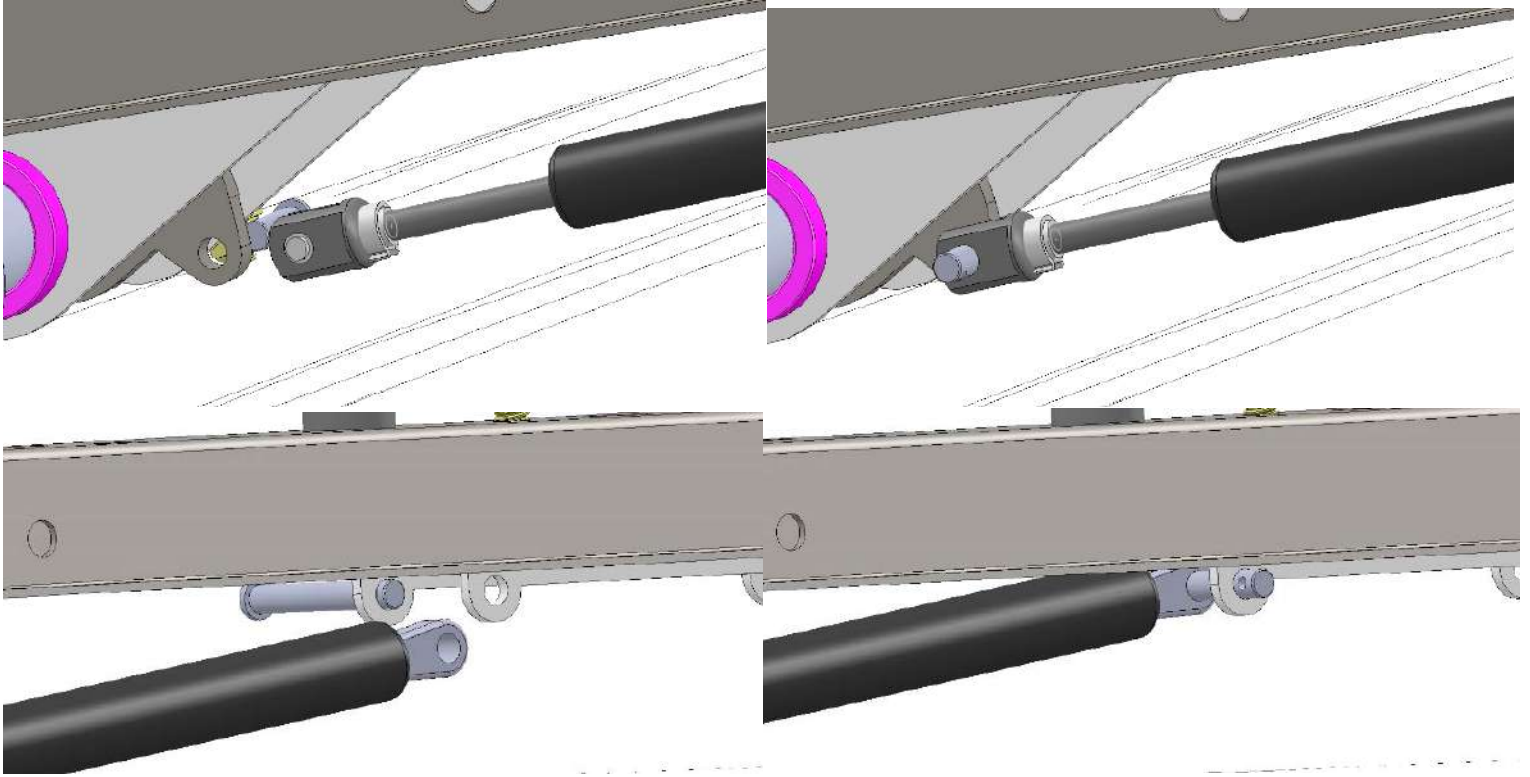
## **Step 3**

Attach the "Torque Tube" between the flanged plates on the "Torque Tube pivot Assy." Using 1/4"x7/8" bolts as shown below. Be sure the "Torque Tube pivot Assy." Are lined up prior to bolting them together. You can now re-attach the feet.



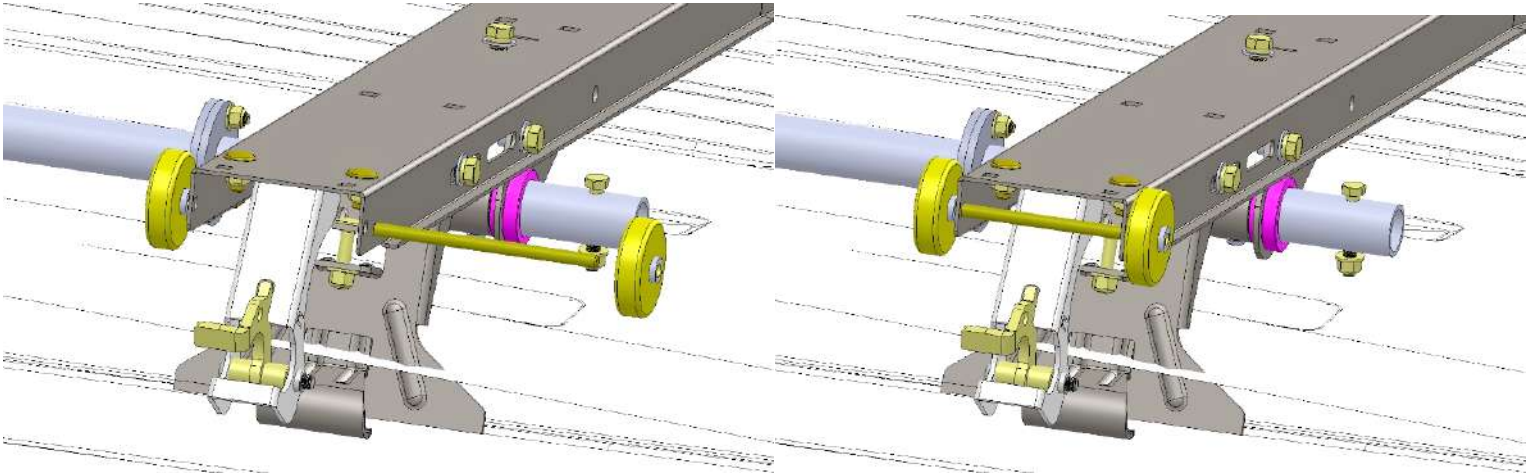
#### **Step 4**

Next attach the "Dampener" to the front and rear bow assembly. Make sure the "Torque Tube Pivot Assy." is rotated so the cam is pointed towards the center of the van. Attach the shaft end of the "Dampener" to the cam using the 5/16" pin, make sure the cotter pin is secure. Now attach the body end to the "Dampener mounting Bracket" using the 5/16"x2 1/4" pin.



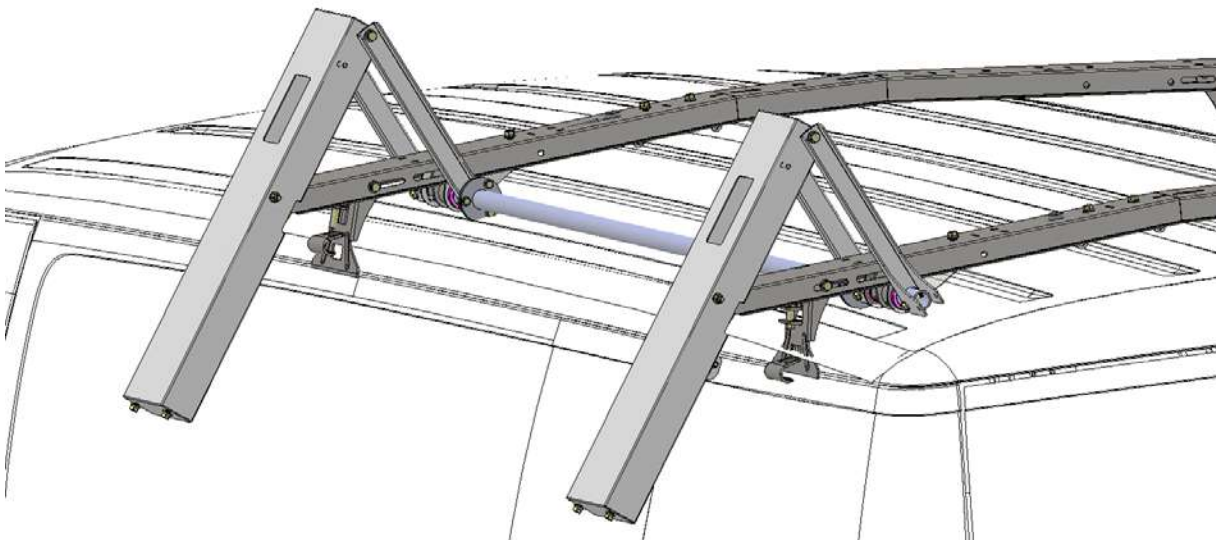
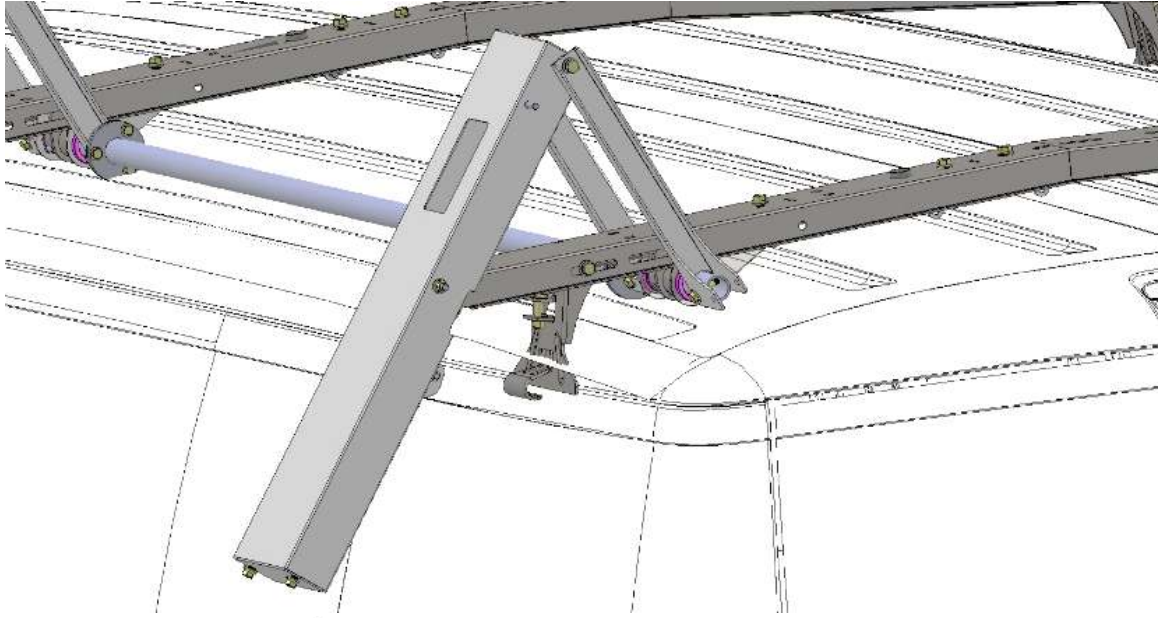
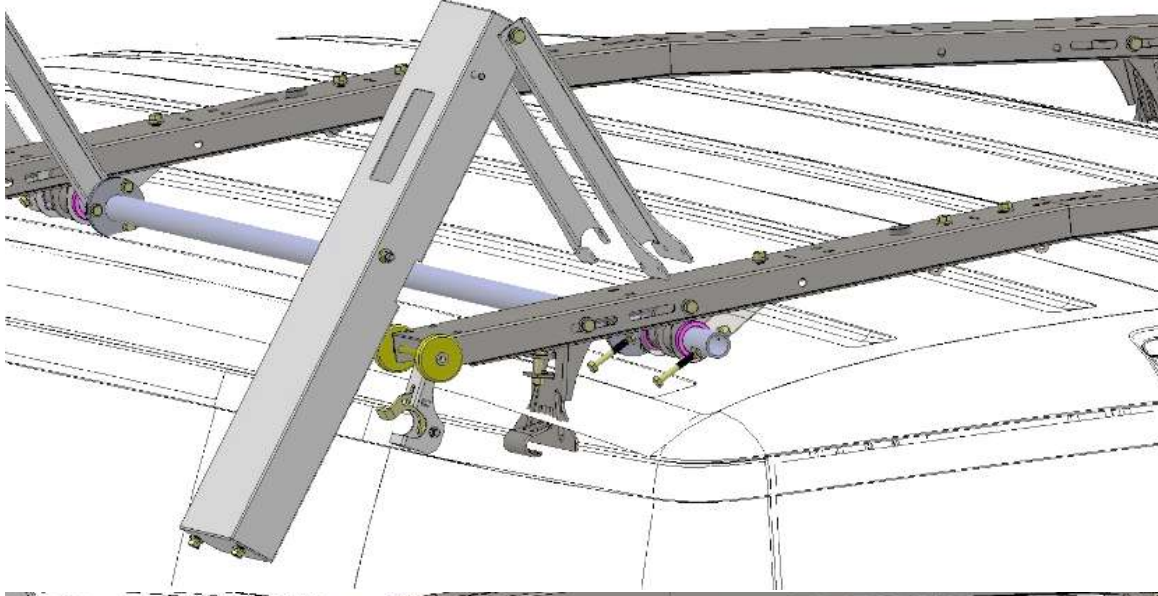
#### **Step 5**

Next install the "Axles" and "Rollers" at the end of both front and rear crossbow. The "Axle" just slides in and the "Rollers" slide over the ends of the "Axle" as shown below. NOTE: There is NO latch on the "40983" like shown in this diagram.



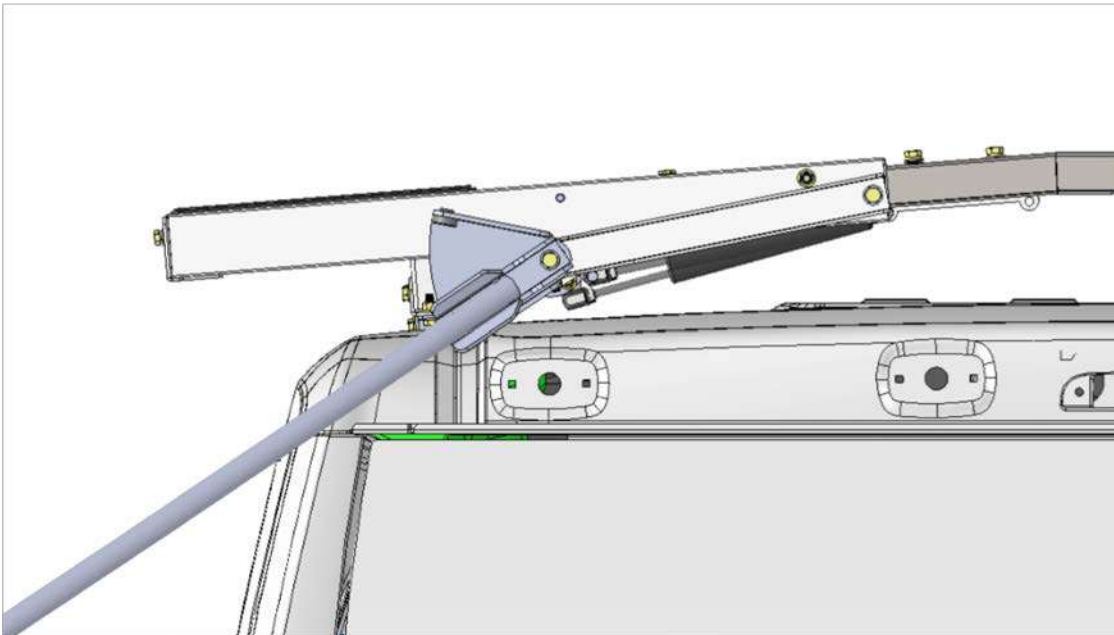
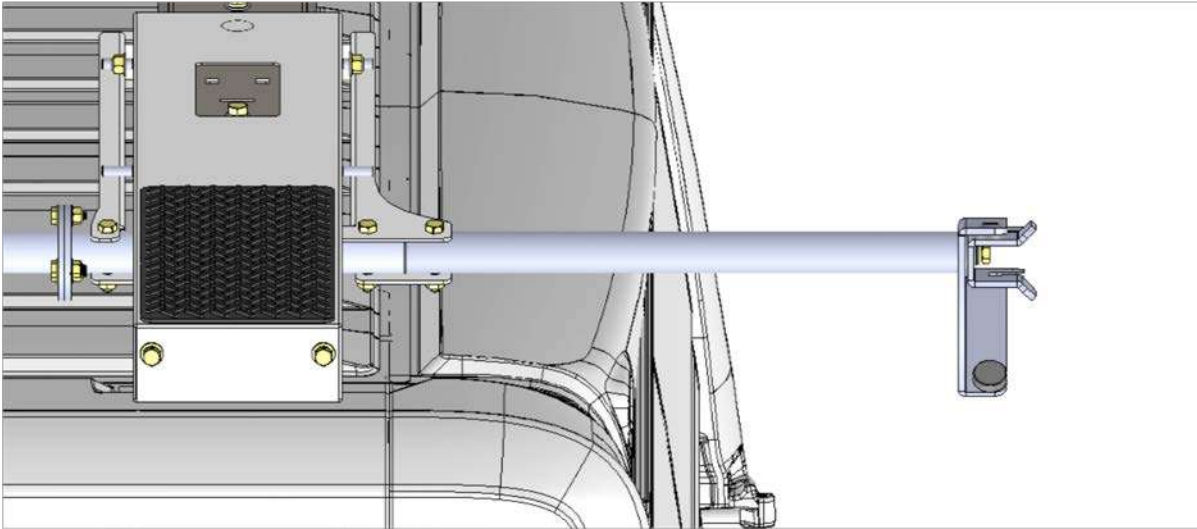
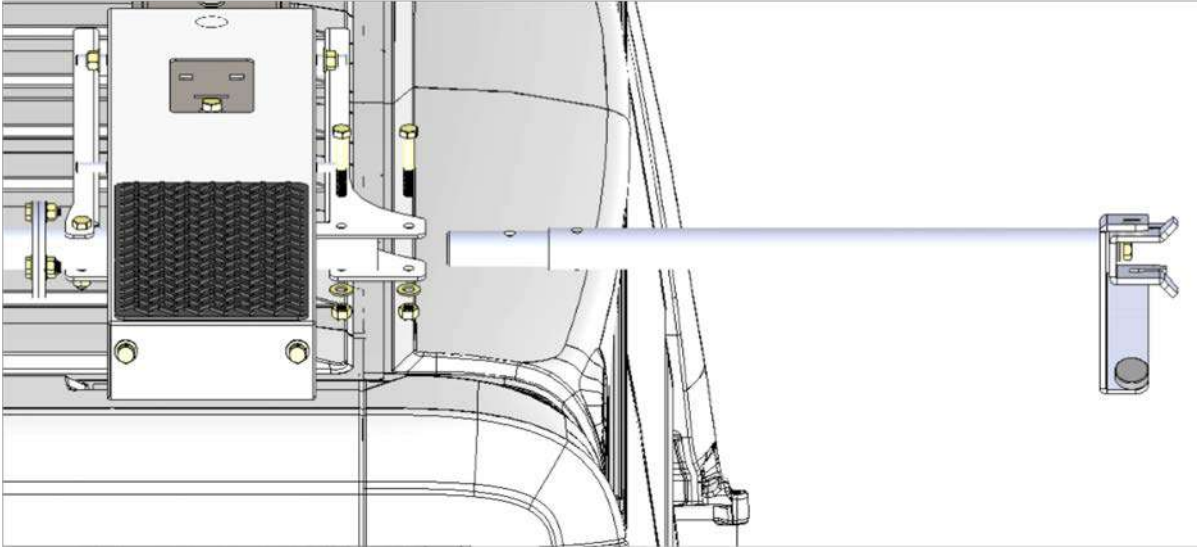
### Step 6

Next install the "Ladder Pan Assy." Align cutouts in "Ladder Pan Assy." with the "Rollers" and guide the arms onto the "Torque Tube Pivot Assy." As you lower the assembly onto the rollers. Insert 5/16"x 2" bolts with flat washer and nylock nuts through arms and "Torque Tube Assy." Make sure the "Rear Ladder Pan Assy." is on the rear crossbow.



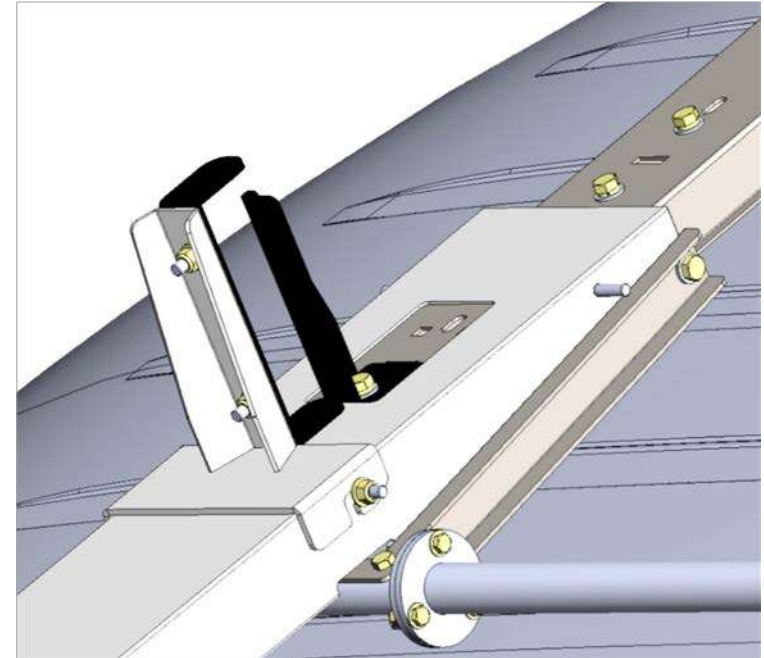
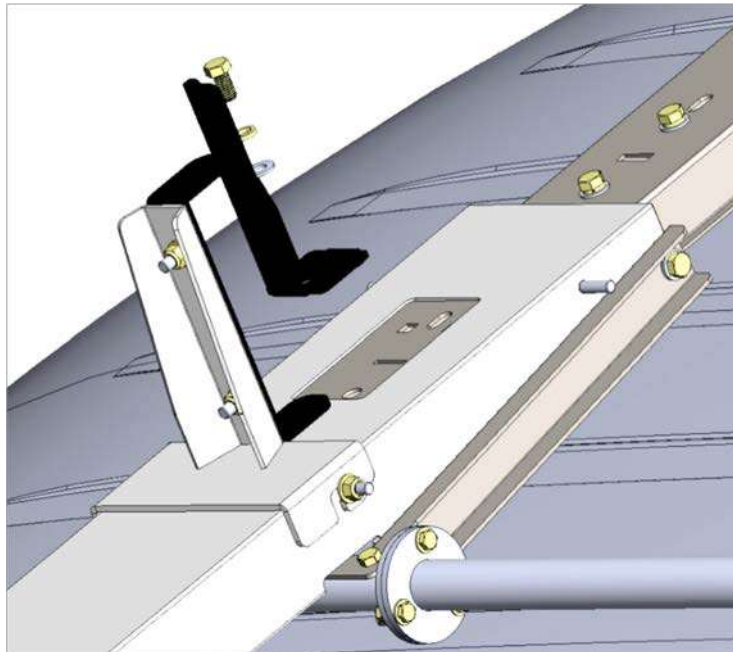
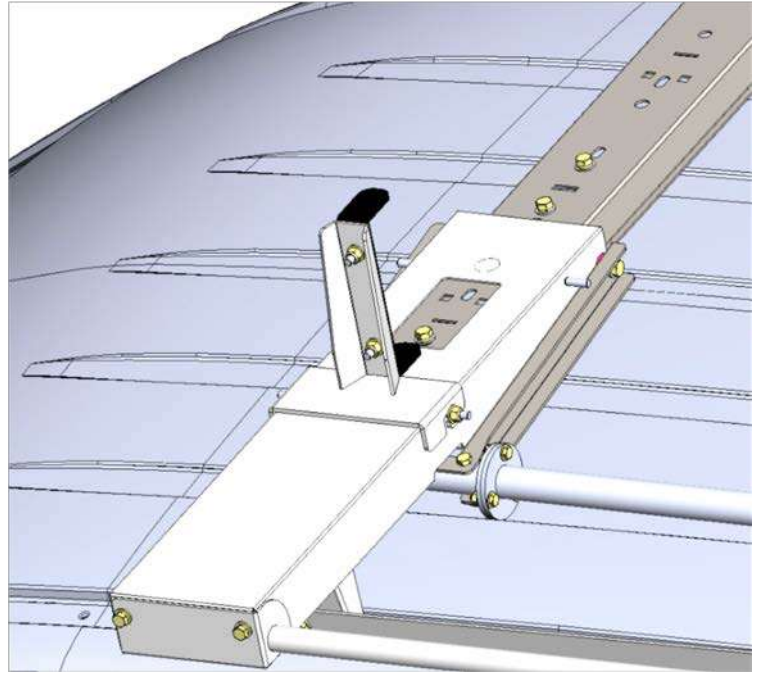
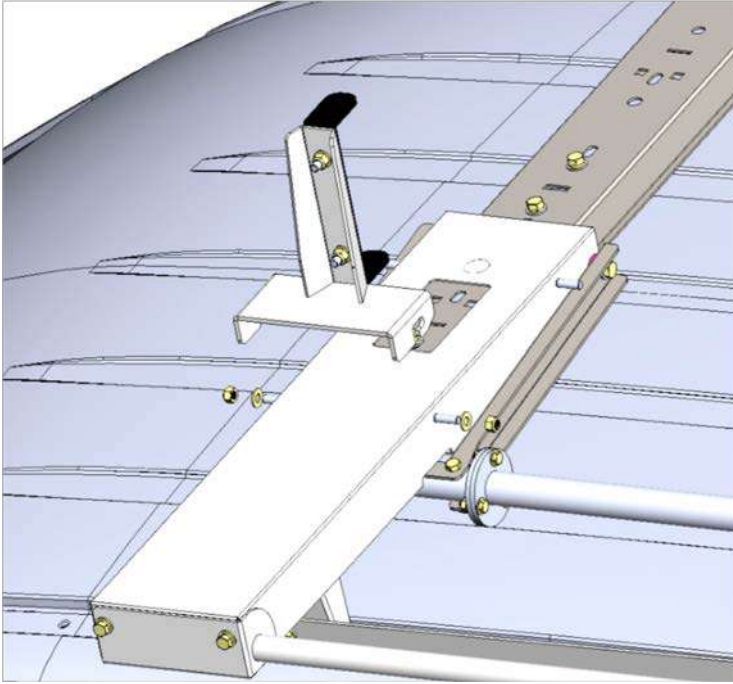
**Step 7**

Install handle assembly, use E6000 on 5/16" x 2" bolts to keep water out of the tube. Be sure handle will clear the back of the van.

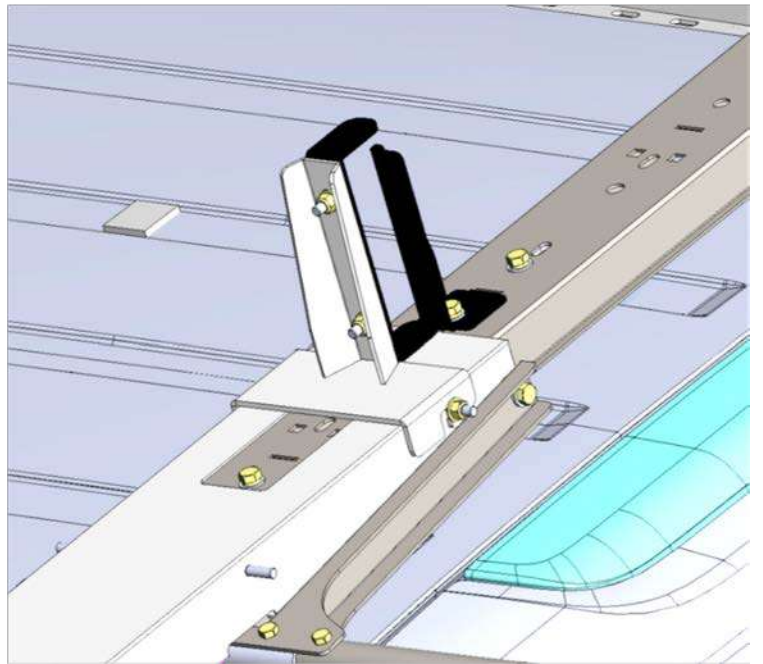
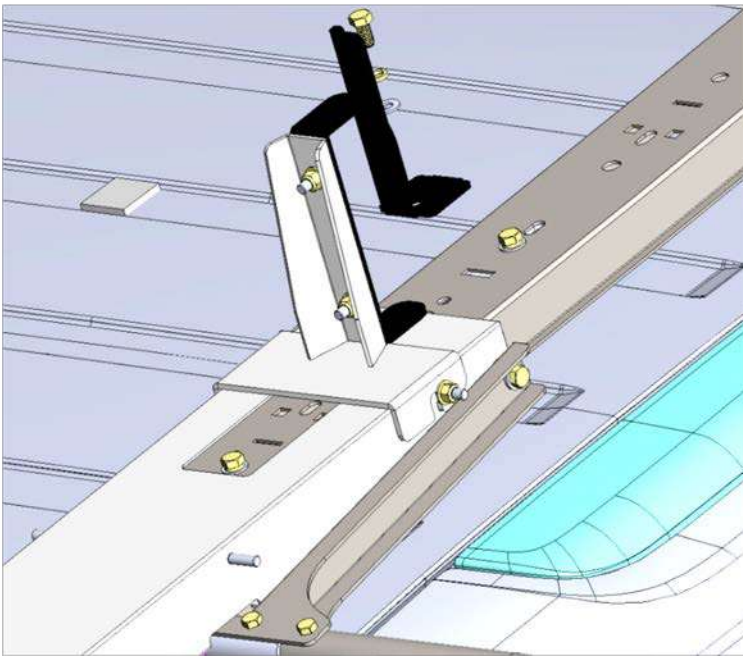
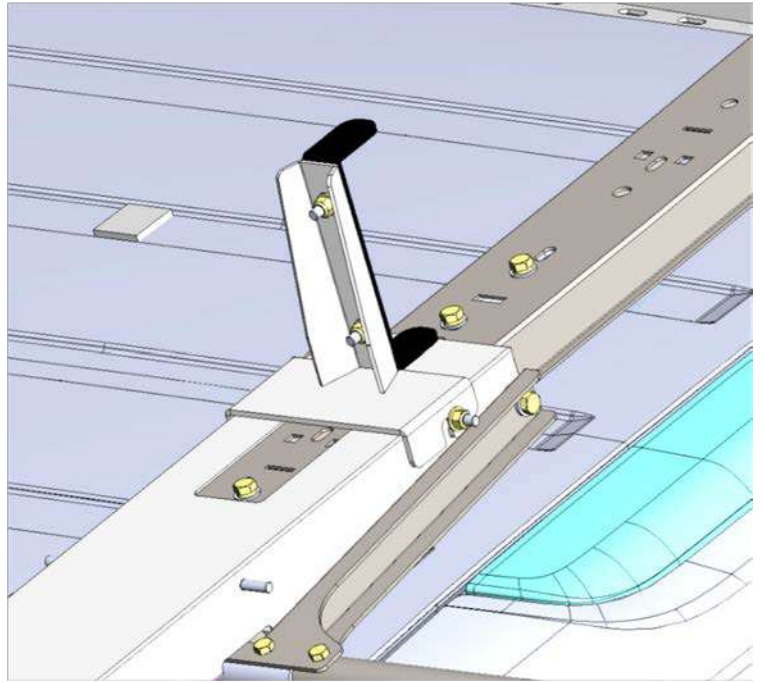
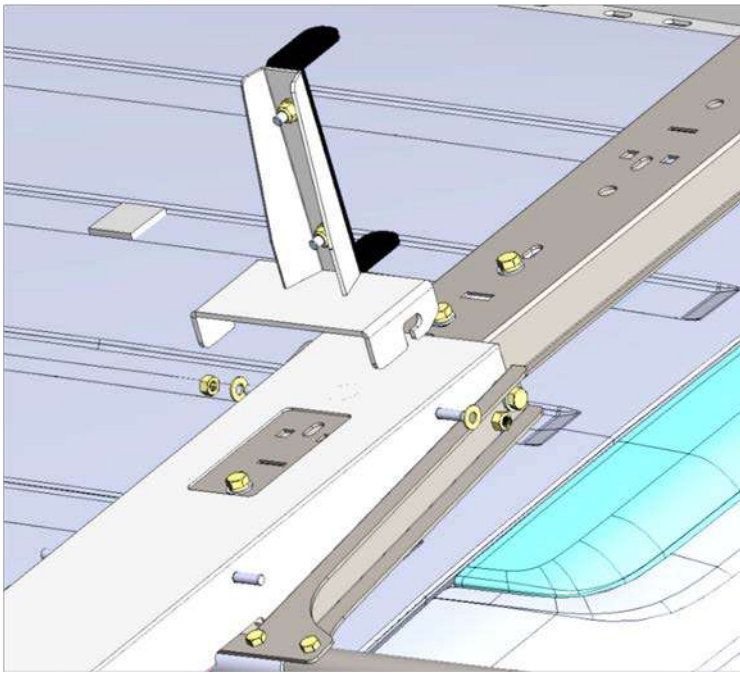


### Step 8

Next attach the "Ladder Hooks" and "Ladder Stops". Attach "Ladder Hooks" to ladder pans on 5/16" studs in desired location. Attach "Ladder Stops" to coincide with "Ladder Hooks" by removing 3/8"x3/4" bolt and placing stop so the tab on the stop goes into the corresponding slot. The first 4 pictures show the front hooks, the next 4 show the rear hook set in the "step ladder" location. If you are using an extension ladder use the same location as the front bow.

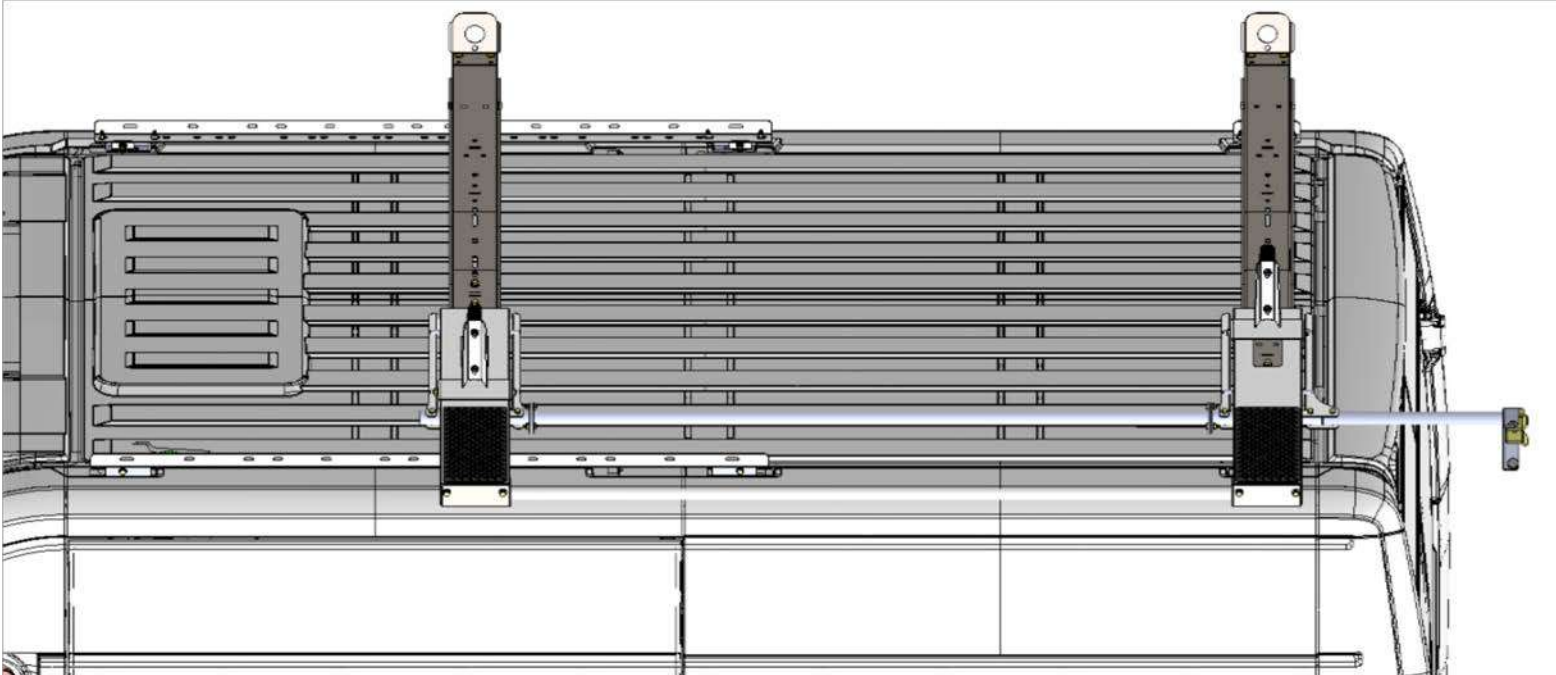
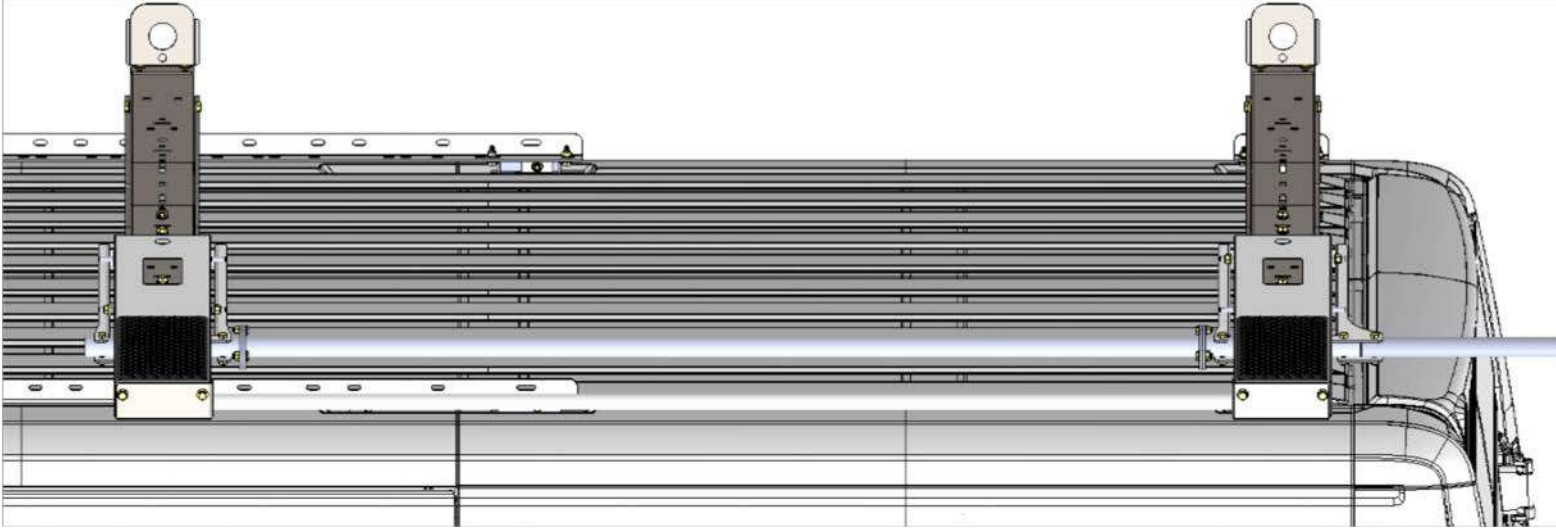
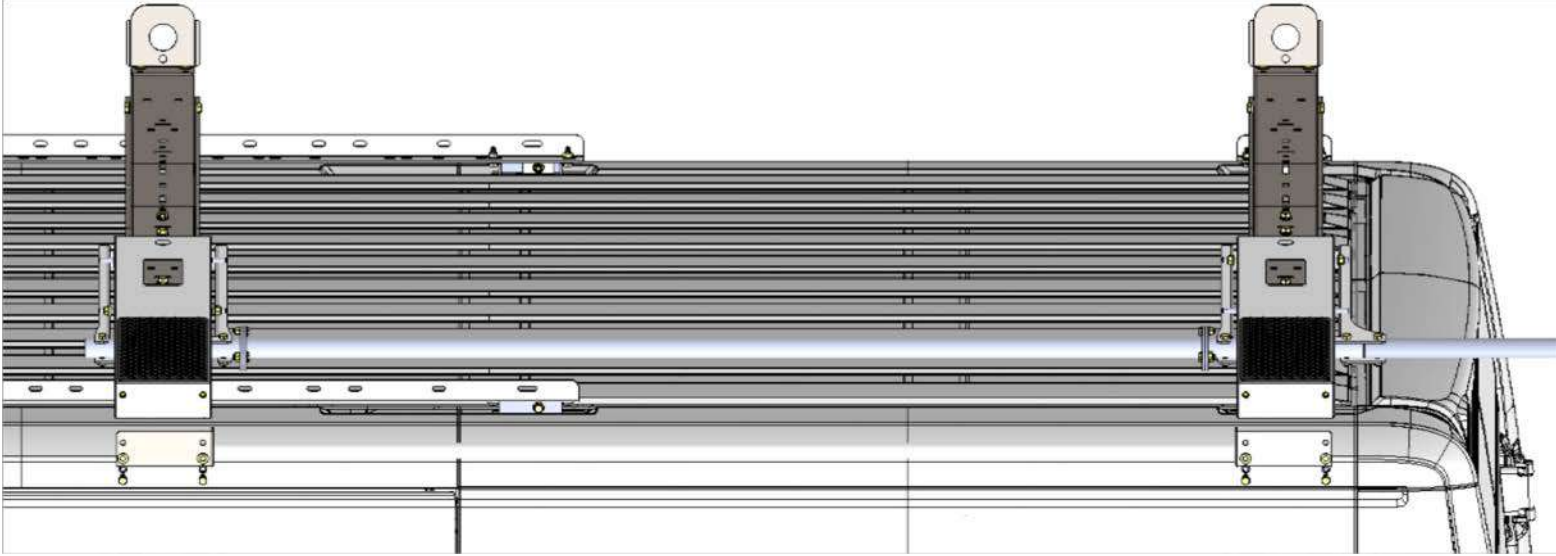


Rear bow location for step ladder.



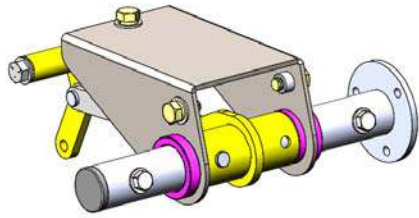
### Step 9

Attach ladder pan stiffener, in the closed position, using 5/16" x 5/8" bolts with lock and flat washers. Confirm that distance between passenger side feet and driver side feet are still EXACTLY the same. Now you can tighten the feet for the front and rear bow assembly. The installation is complete.

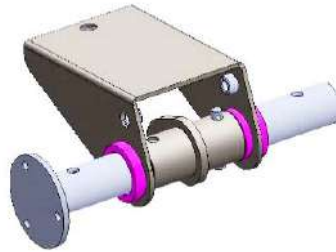




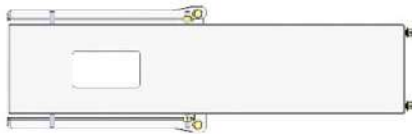
## 40983 Parts List



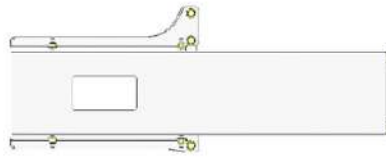
Front Torque Tube Pivot Assy.



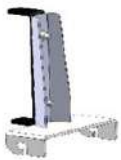
Rear Torque Tube Pivot Assy.



Front Ladder Pan Assy. (1)



Rear Ladder Pan Assy. (1)



Ladder Hook(2)



Ladder Stop(2)



Dampener Mnt Brkt(2)



Roller(4)



Axle(2)



Dampener(2)



Torque Tube (1)



Ladder Pan Stiffener (1)



Handle Assy. (1)

# 40983 Hardware List

## Tools Needed

8' Tape Measure  
1/4" Socket  
5/16" Socket

1/4" End Wrench  
5/16" End Wrench  
Hammer

## Hardware Pack

(b)  
Qty 8 -  
5/16" Flat Washer



(c)  
Qty 4 -  
5/16" Lock Washer



(d)  
Qty 4 -  
5/16"-18 Nyloc Nut



(e)  
Qty 4 -  
5/16"-18 x 5/8" Hex Bolt



(j)  
Qty 6 -  
1/4"-20 x 7/8" Fully Threaded Hex Bolt



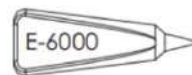
(k)  
Qty 12 -  
1/4" Flat Washer



(l)  
Qty 6 -  
1/4"-20 Nyloc Nut



(m)  
Qty 1 -  
E6000



(n)  
Qty 4 -  
3/8" Nylon Washer



(p)  
Qty 4  
Nylon Spacer

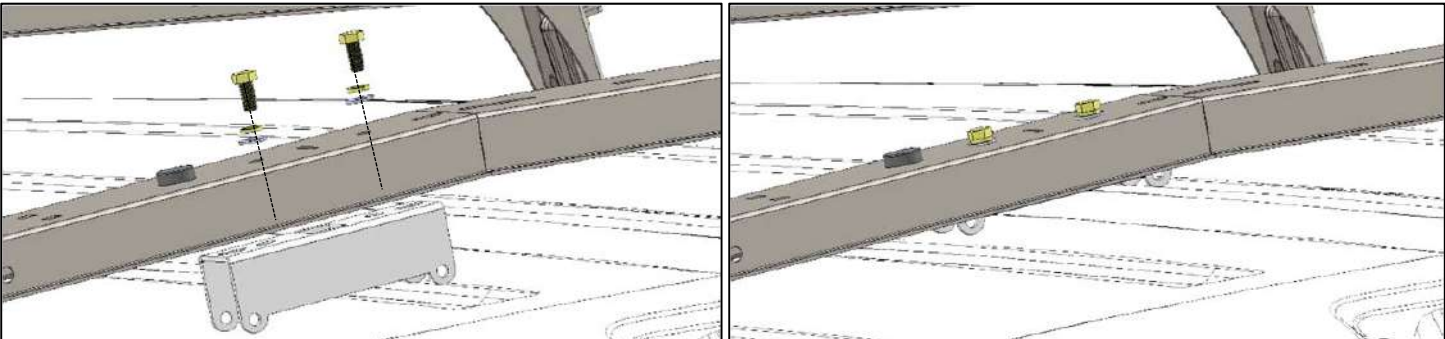




## 40983 Installation Instructions

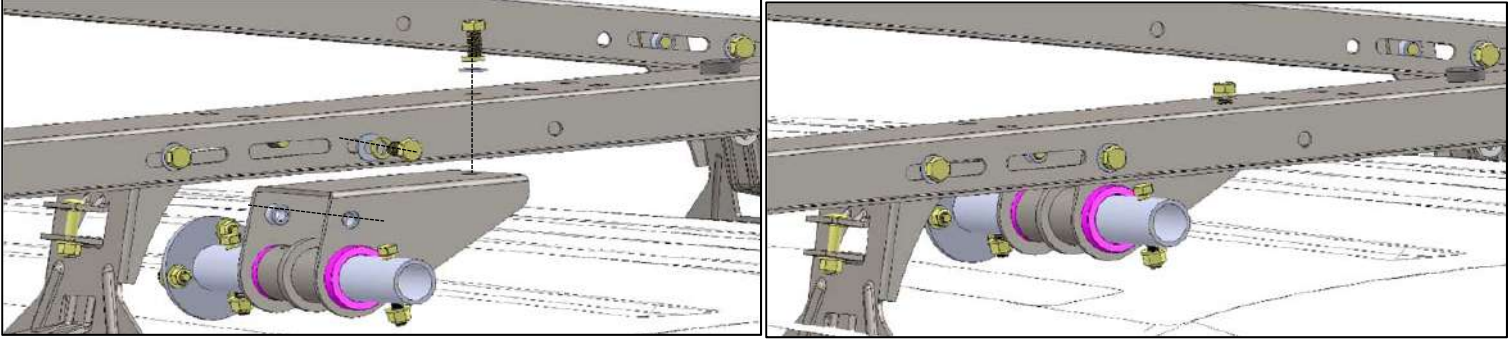
### Step 1

Bolt "Dampener mounting bracket" underneath the crossbow (both front and rear) as shown below using 3/8"x3/4 Bolts with flat and lock washers.



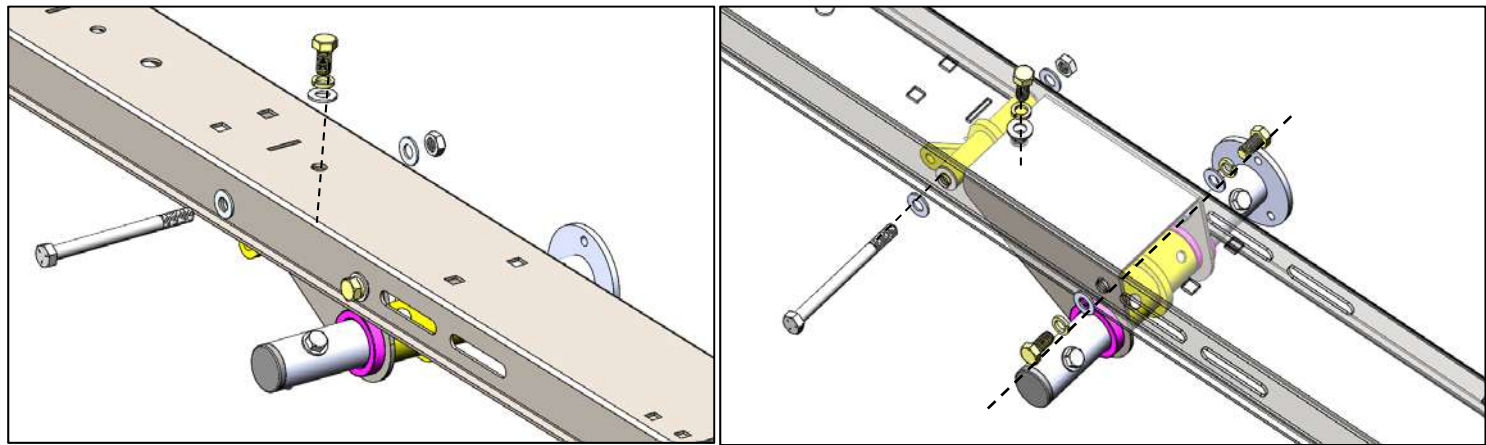
### Step 2

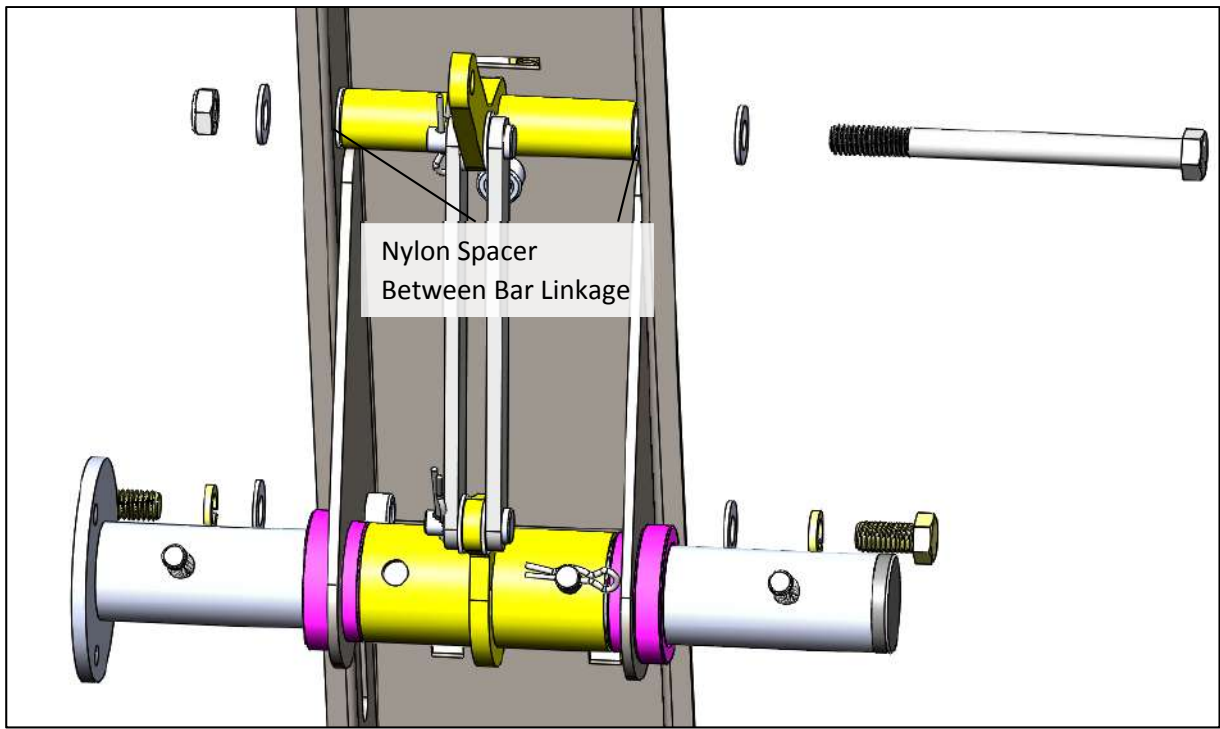
Only "Rear Torque tube pivot Assy." underneath the rear crossbow as shown below using 3/8"x3/4 Bolts with flat and lock washers. Be sure to have the 3 hole flanges facing each other (rear bow shown). You may need to detach the feet and lift the crossbow slightly to get into place.



### Step 3

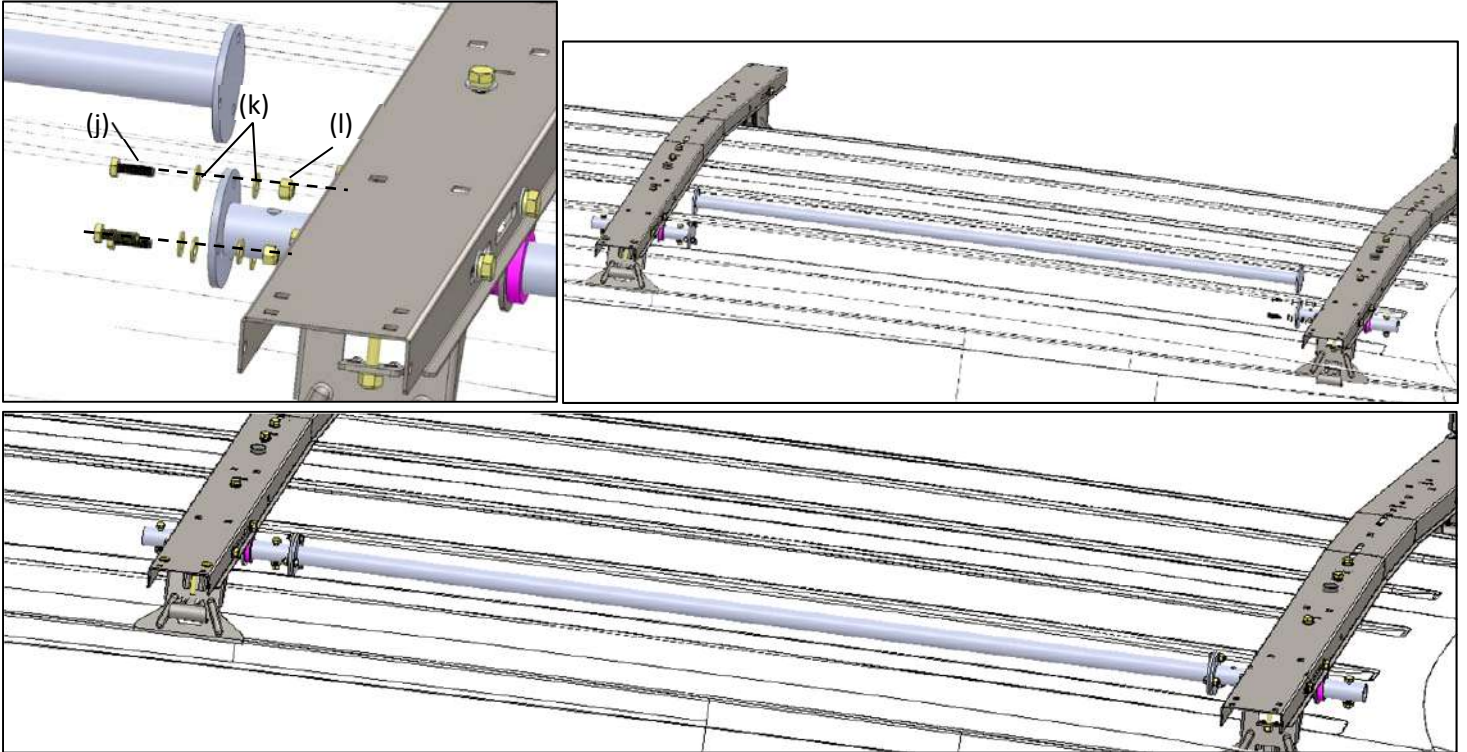
"Front Torque tube pivot Assy." underneath the front crossbow as shown below using 3/8"x3/4 Bolts with flat and lock washers. Next attach the Bar linkage end to the bow using the 3/8" x 4.5" Hex Head Bolt with flat washers and nylon washer in between the bow and the bar linkage. Be sure to have the 3 hole flanges facing each other (front bow shown). You may need to detach the feet and lift the crossbow slightly to get into place.





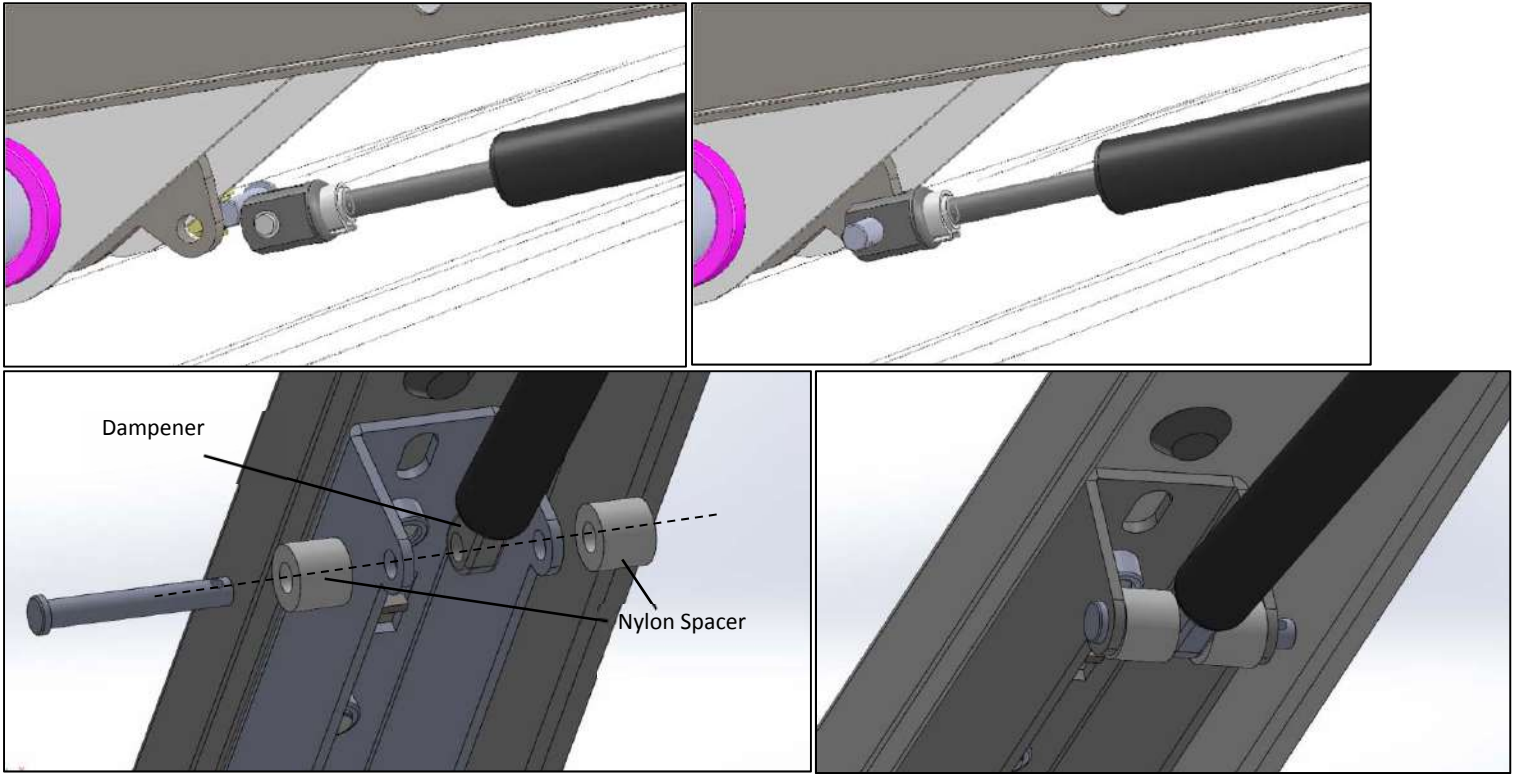
#### Step 4

Attach the "Torque Tube" between the flanged plates on the "Torque Tube pivot Assy." Using  $\frac{1}{4}$ "x $\frac{7}{8}$ " bolts as shown below. Be sure the "Torque Tube pivot Assy." Are lined up prior to bolting them together. You can now re-attach the feet.



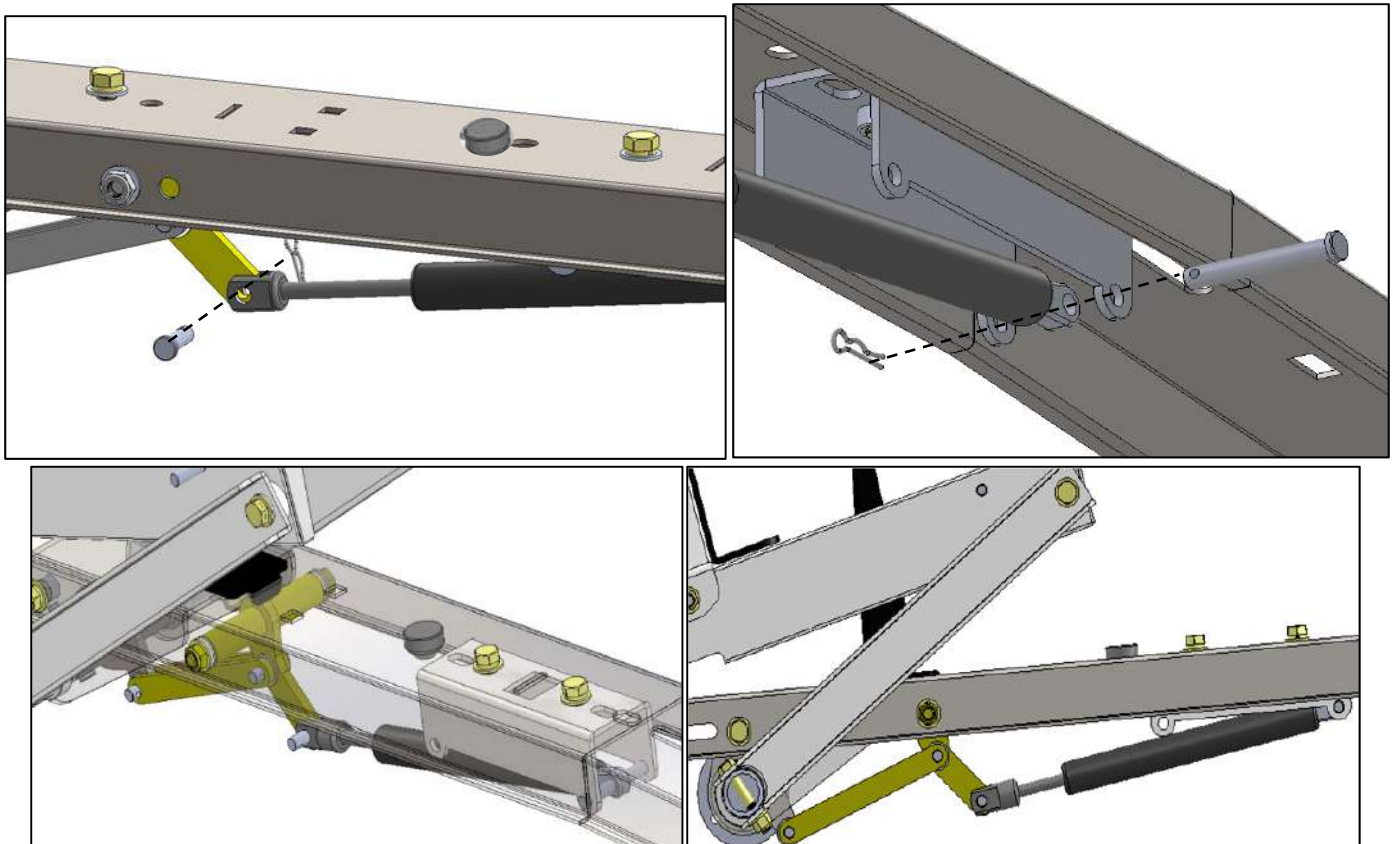
### Step 5

Next attach the "Dampener" to the rear bow assembly. Make sure the "Torque Tube Pivot Assy." is rotated so the cam is pointed towards the center of the van. Attach the shaft end of the "Dampener" to the cam using the 5/16" pin, make sure the cotter pin is secure. Now attach the body end to the "Dampener mounting Bracket" using the 5/16"x2 1/4" pin, sandwich the nylon spacer (p) to secure the dampener in the middle of the bracket.



### Step 6

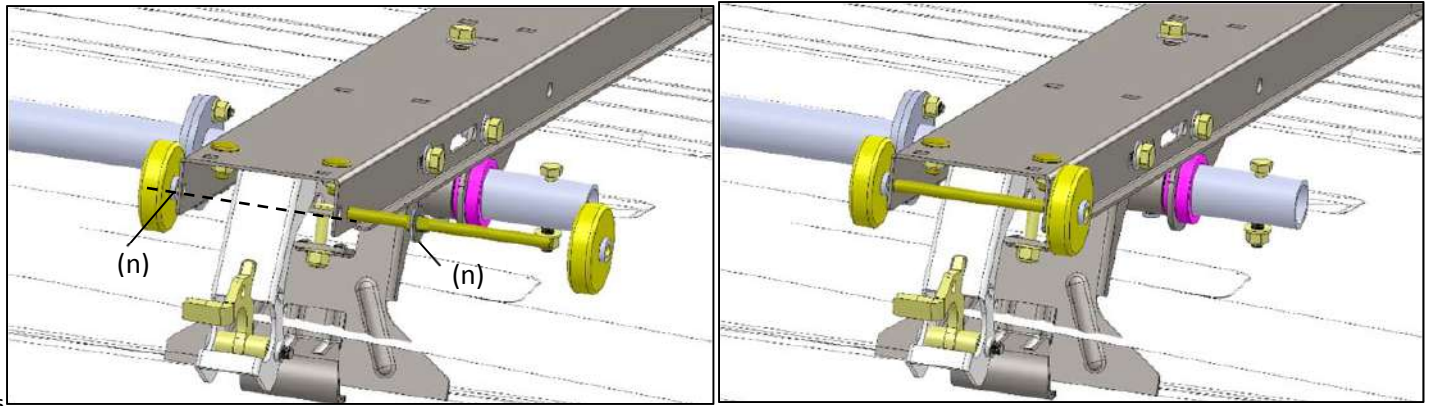
Attach the shaft end of the "Dampener" to the cam using the 5/16" pin, **make sure the cotter pin is secure**. Now attach the body end of the dampener to the "Dampener mounting Bracket" using the 5/16"x2 1/4" pin, **make sure the cotter pin is secure**.



REAR VIEW

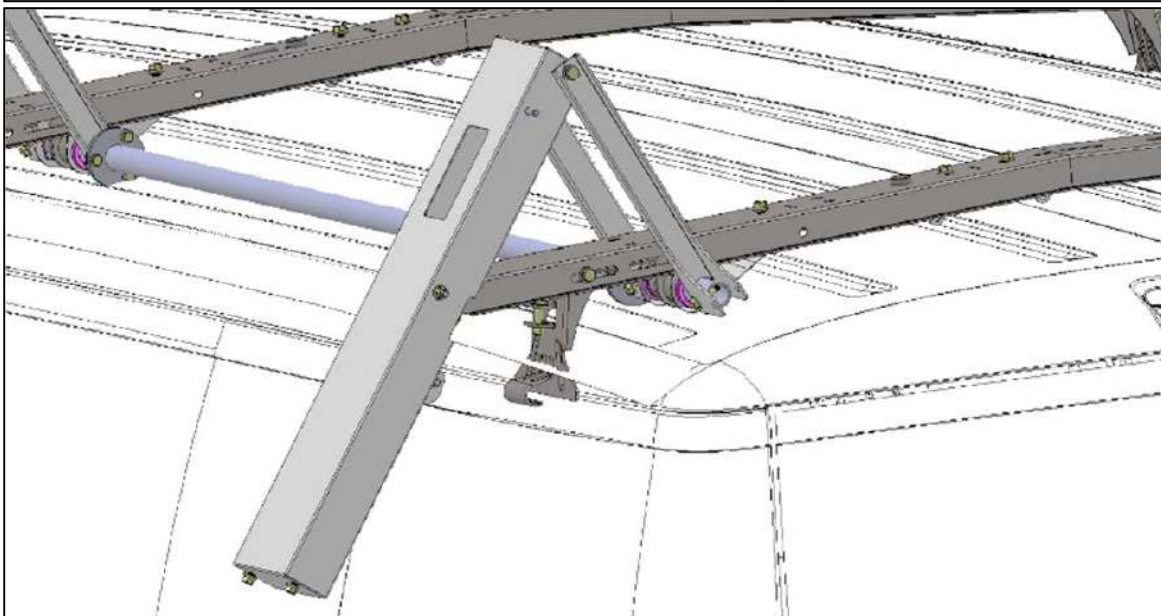
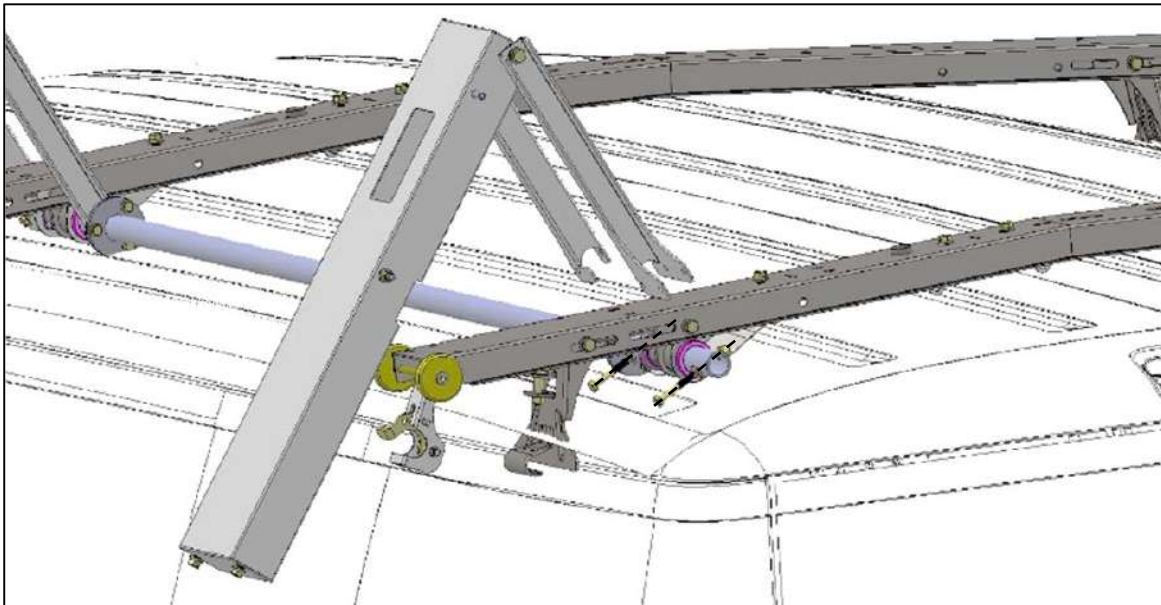
### **Step 6**

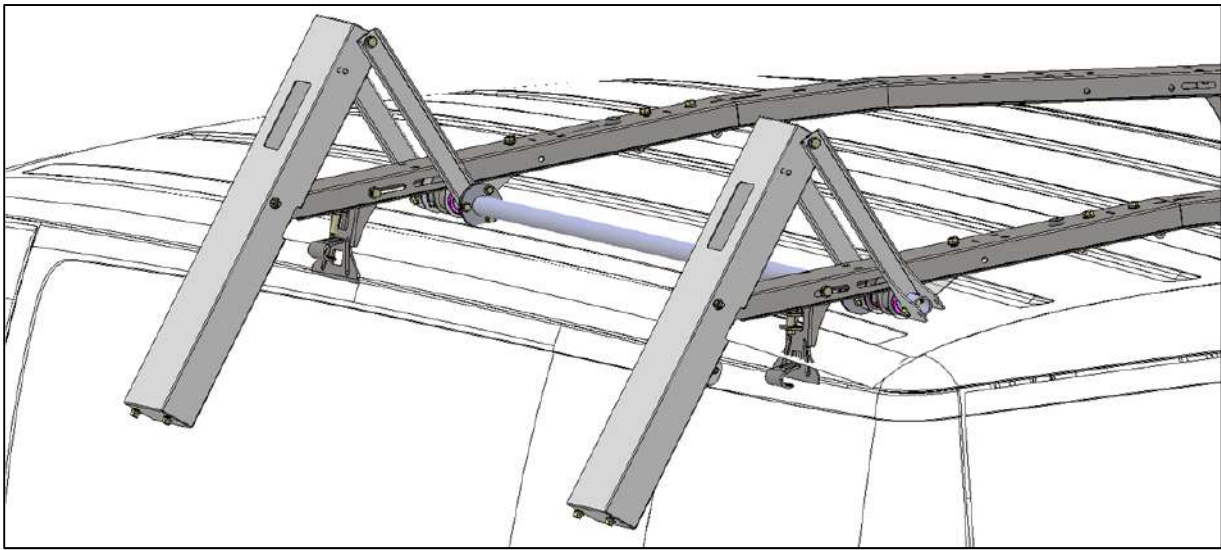
Next install the "Axles" and "Rollers" at the end of both front and rear crossbow. The "Axle" just slides in and the "Rollers" slide over the ends of the "Axle" as shown below. NOTE: There is NO latch on the "40983" like shown in this diagram.



### **Step 7**

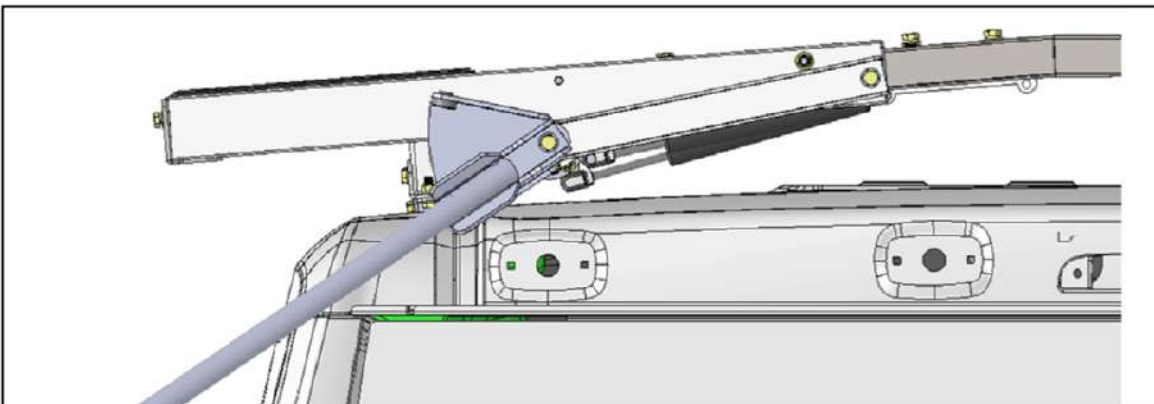
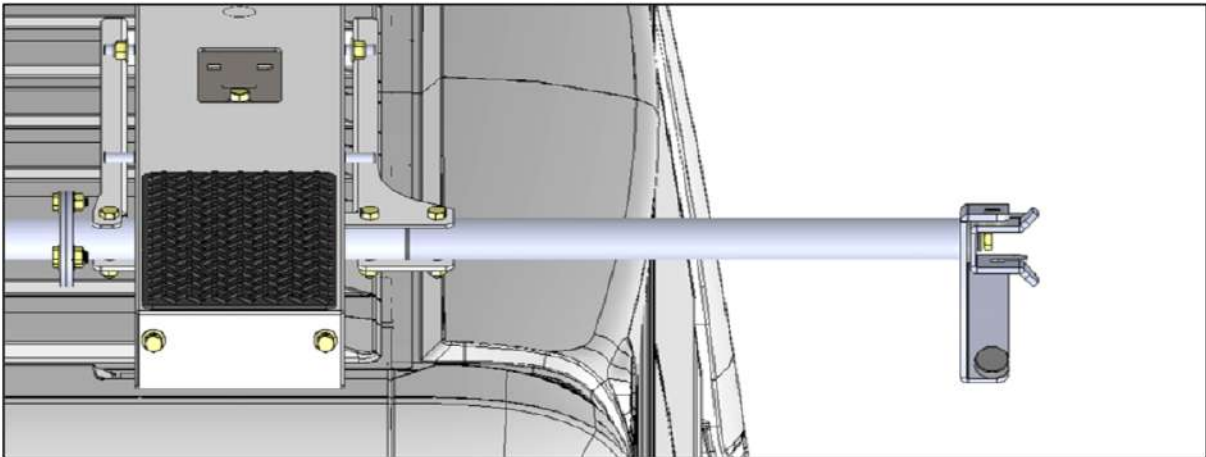
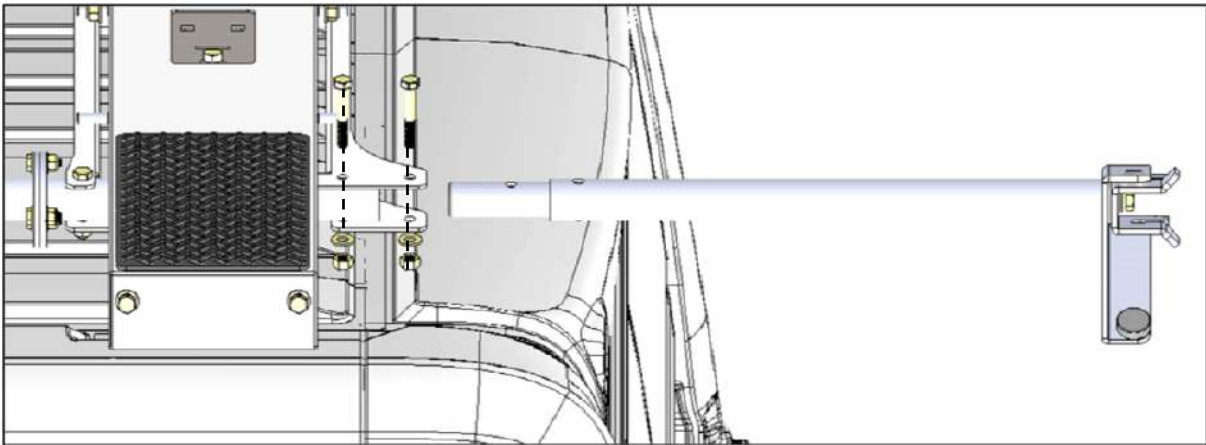
Next install the "Ladder Pan Assy." Align cutouts in "Ladder Pan Assy." with the "Rollers" and guide the arms onto the "Torque Tube Pivot Assy." As you lower the assembly onto the rollers. Insert 5/16" x 2" bolts with flat washer and nylock nuts through arms and "Torque Tube Assy." Make sure the "Rear Ladder Pan Assy." is on the rear crossbow.





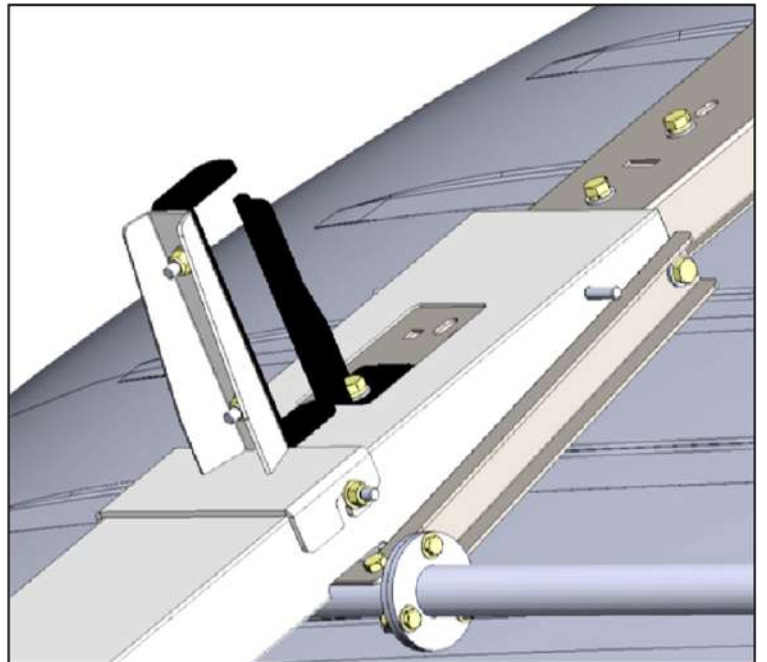
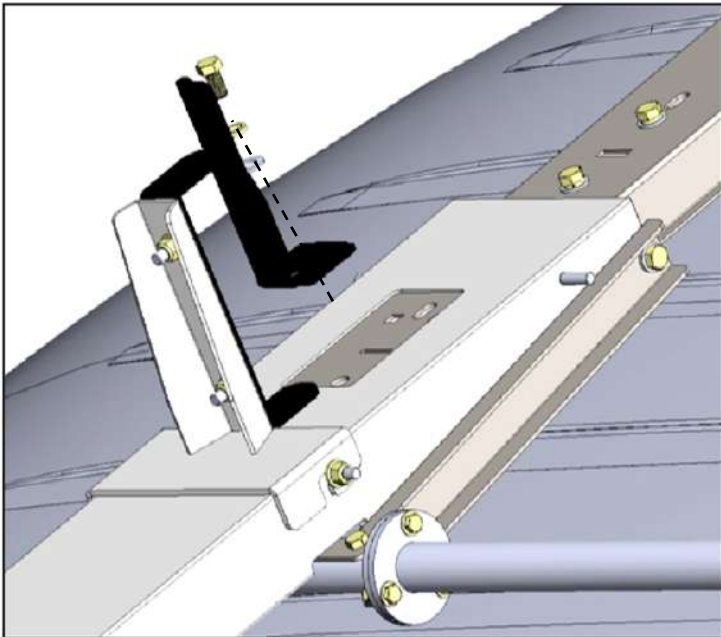
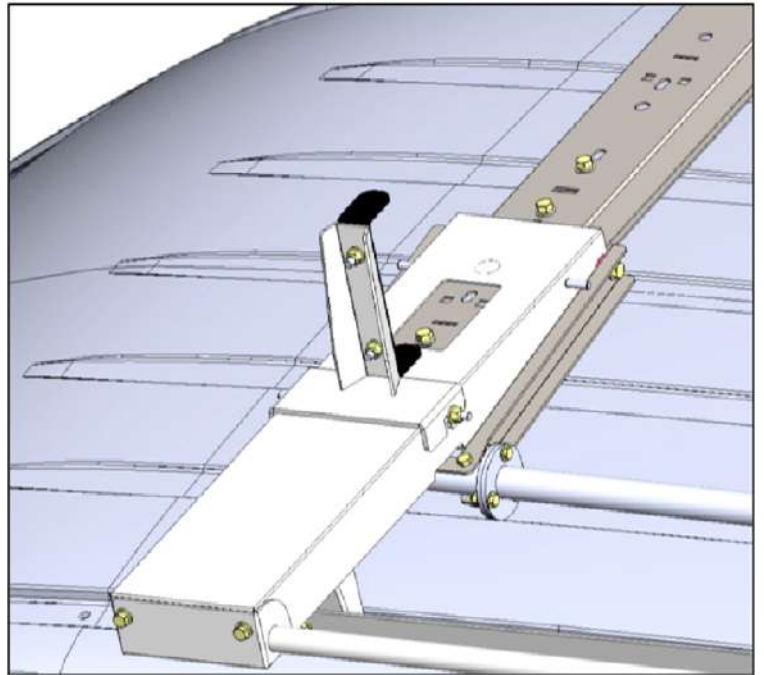
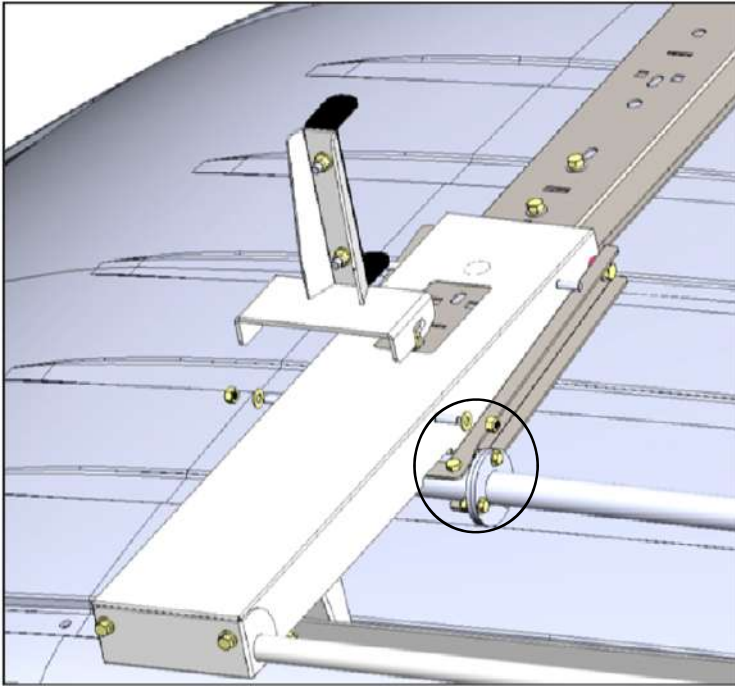
**Step 8**

Install handle assembly, use E6000 on 5/16"x 2" bolts to keep water out of the tube. **Be sure handle will clear the back of the van.**

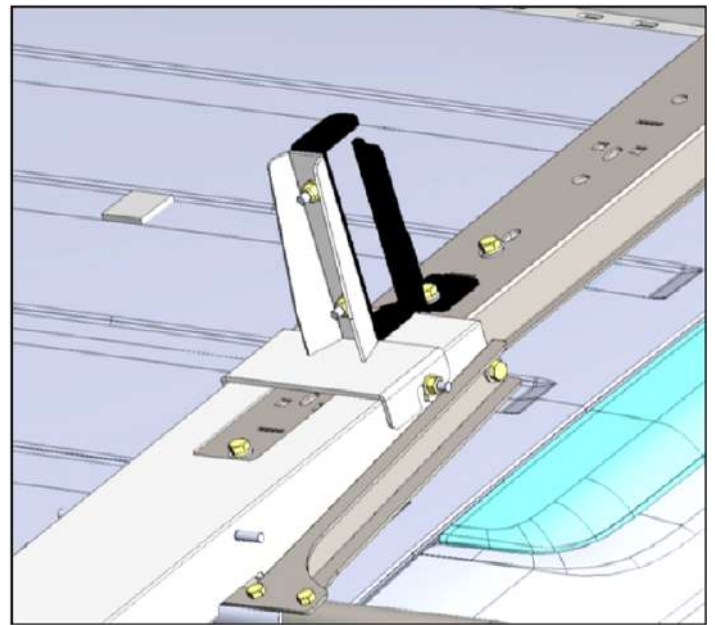
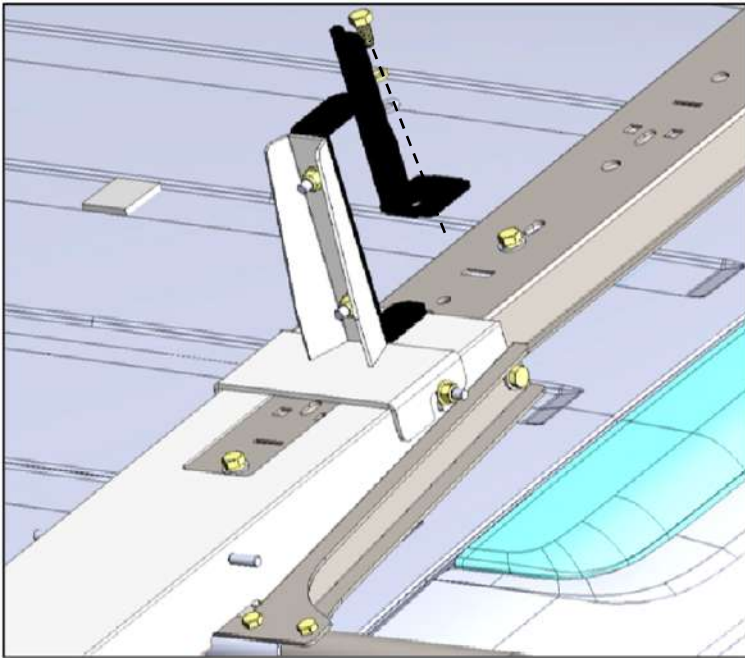
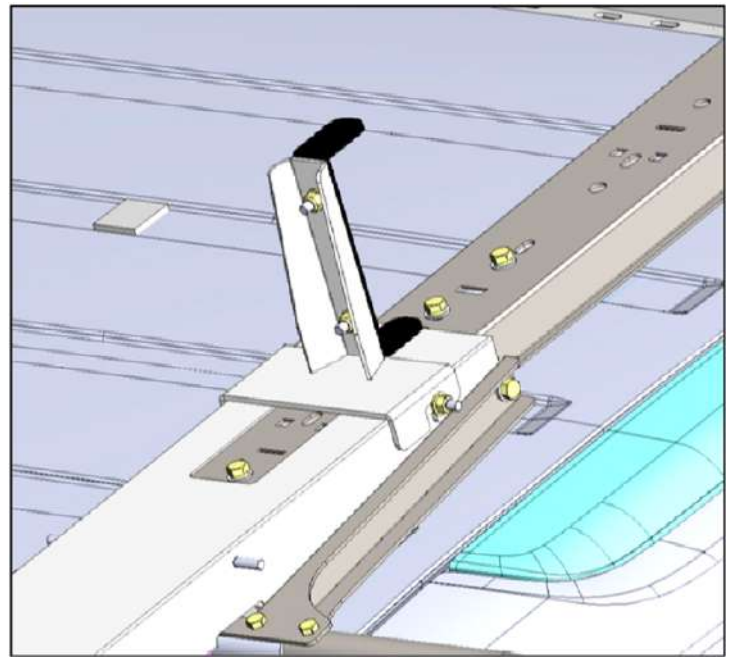
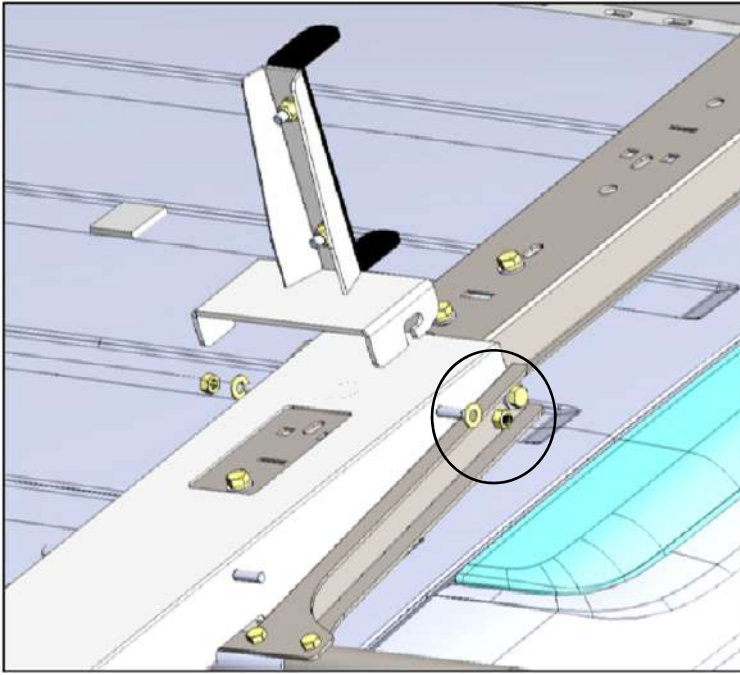


### Step 9

Next attach the "Ladder Hooks" and "Ladder Stops". Attach "Ladder Hooks" to ladder pans on 5/16" studs in desired location. Attach "Ladder Stops" to coincide with "Ladder Hooks" by removing 3/8"x3/4" bolt and placing stop so the tab on the stop goes into the corresponding slot. The first 4 pictures show the front hooks, the next 4 show the rear hook set in the "step ladder" location. If you are using an extension ladder use the same location as the front bow.



Rear bow location for step ladder.



### **Step 10**

Attach ladder pan stiffener, in the closed position, using 5/16"x5/8" bolts(e) with lock washers(c) and flat washers(b). Confirm that distance between passenger side feet and driver side feet are still EXACTLY the same. Now you can tighten the feet for the front and rear bow assembly. The installation is complete.

