



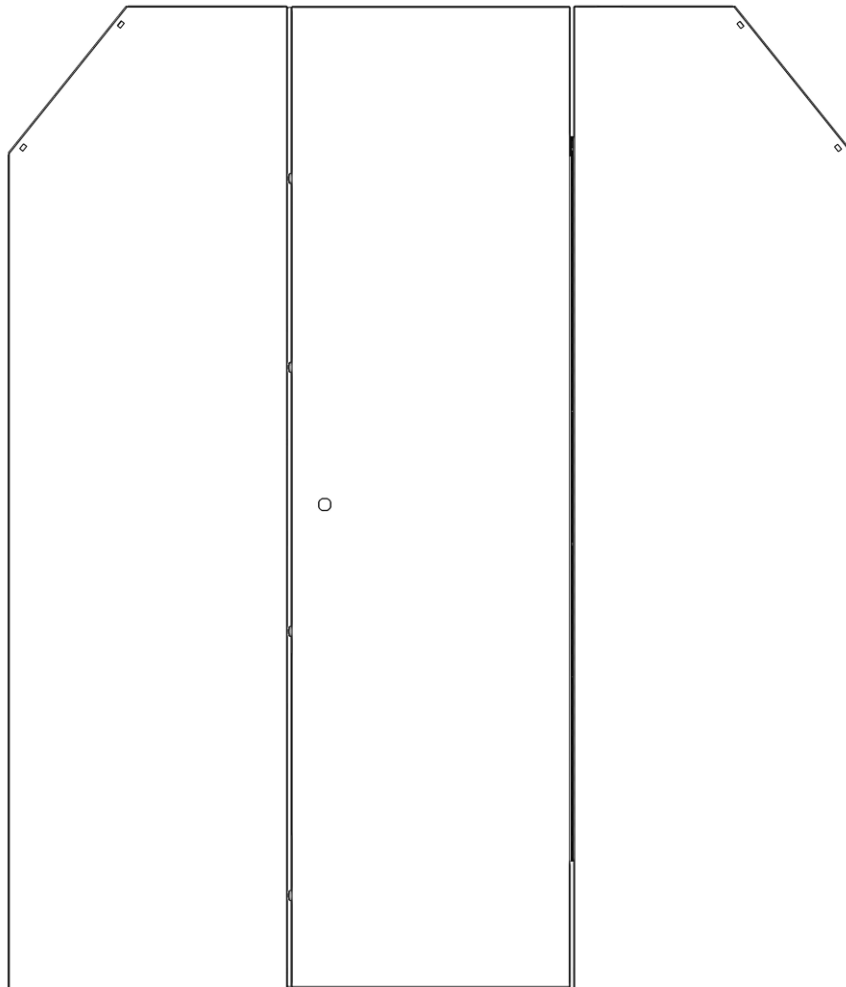
**WE PUT EVERYTHING WITHIN REACH.**

---

# Assembly Guide

## 40661

---



**\*PLEASE READ ALL INSTRUCTIONS AND WARNINGS PRIOR TO ASSEMBLING, INSTALLING, AND USING THIS PRODUCT\***

**Warning**



**Always check for wires, fuel tanks and lines, brake lines and other important vehicle functionality items prior to drilling and installing all products.**

**Table of Contents**

Tools Needed..... 1

Before You Begin..... 1

Parts..... 1

Hardware..... 2

Step 1 – Bolt Together..... 3

**Tools Needed**

|                        |                         |
|------------------------|-------------------------|
| 3/8" Wrench and Socket | 7/16" Wrench and Socket |
|------------------------|-------------------------|

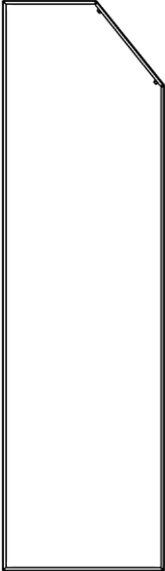
**Before You Begin**

- Read all instructions before installing any Kargo Master product.

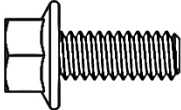

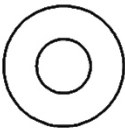
**Parts**

| ITEM NO. | ITEM | PART NUMBER | DESCRIPTION             | QTY. |
|----------|------|-------------|-------------------------|------|
| 1        |      | 100845      | PARTITION DOOR ASSEMBLY | 1    |

**Parts (Continued)**

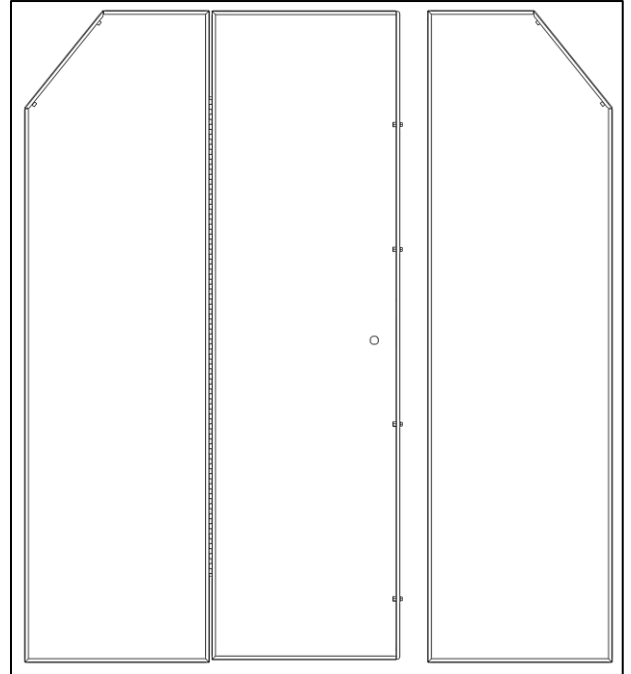
| ITEM NO. | ITEM  | PART NUMBER | DESCRIPTION          | QTY. |
|----------|---|-------------|----------------------|------|
| 2        |  | 100844      | Partition Side Panel | 1    |
| 3        |   | 18-40600    | HARDWARE KIT         | 1    |

**Hardware**

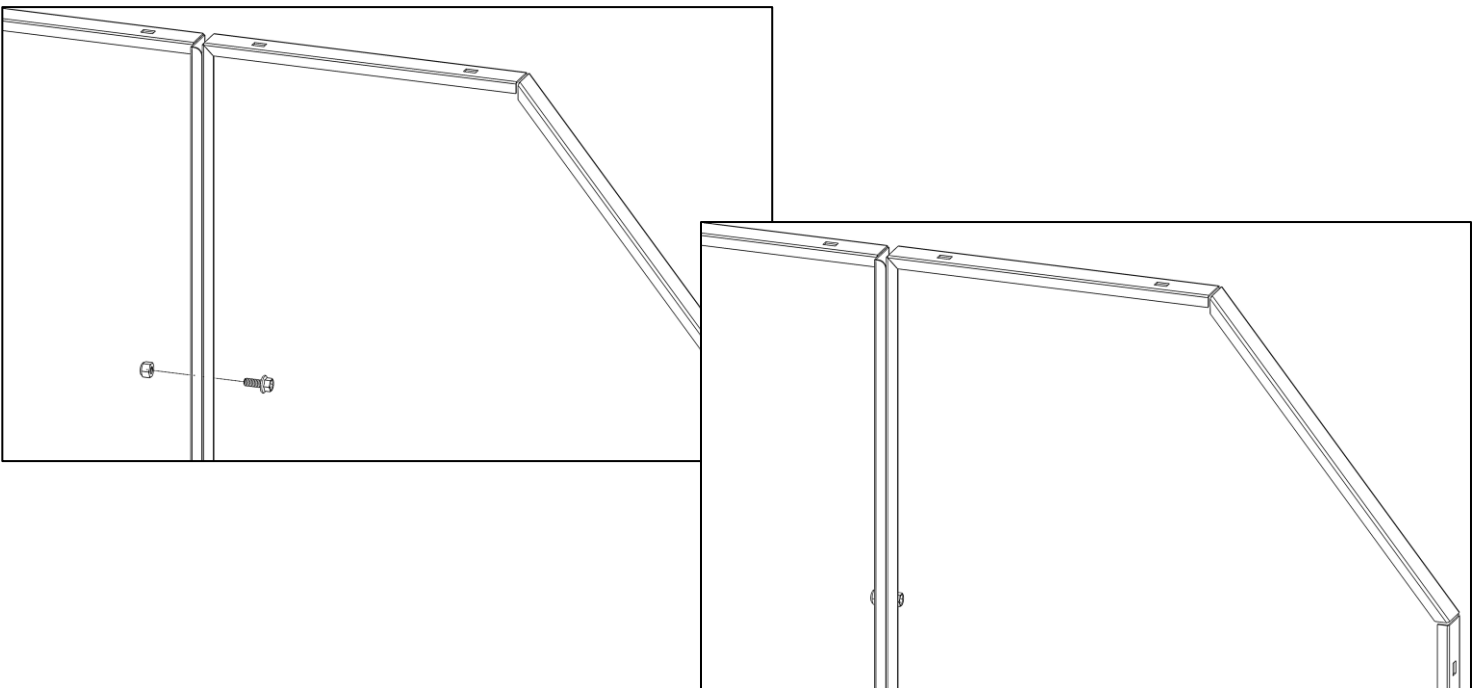
| ITEM | HARDWARE TO SCALE   | PART NUMBER | DESCRIPTION                      | QTY. |
|------|---|-------------|----------------------------------|------|
| 1    |  | 11106180    | 1/4"-20 X 5/8" FLANGED HEX HEAD  | 4    |
| 2    |  |             | 1/4"-20 FLANGED NYLON INSERT NUT | 4    |
| 3    |  | 11541082    | 1/4" FLAT WASHER                 | 8    |

### Step 1 – Bolt Together

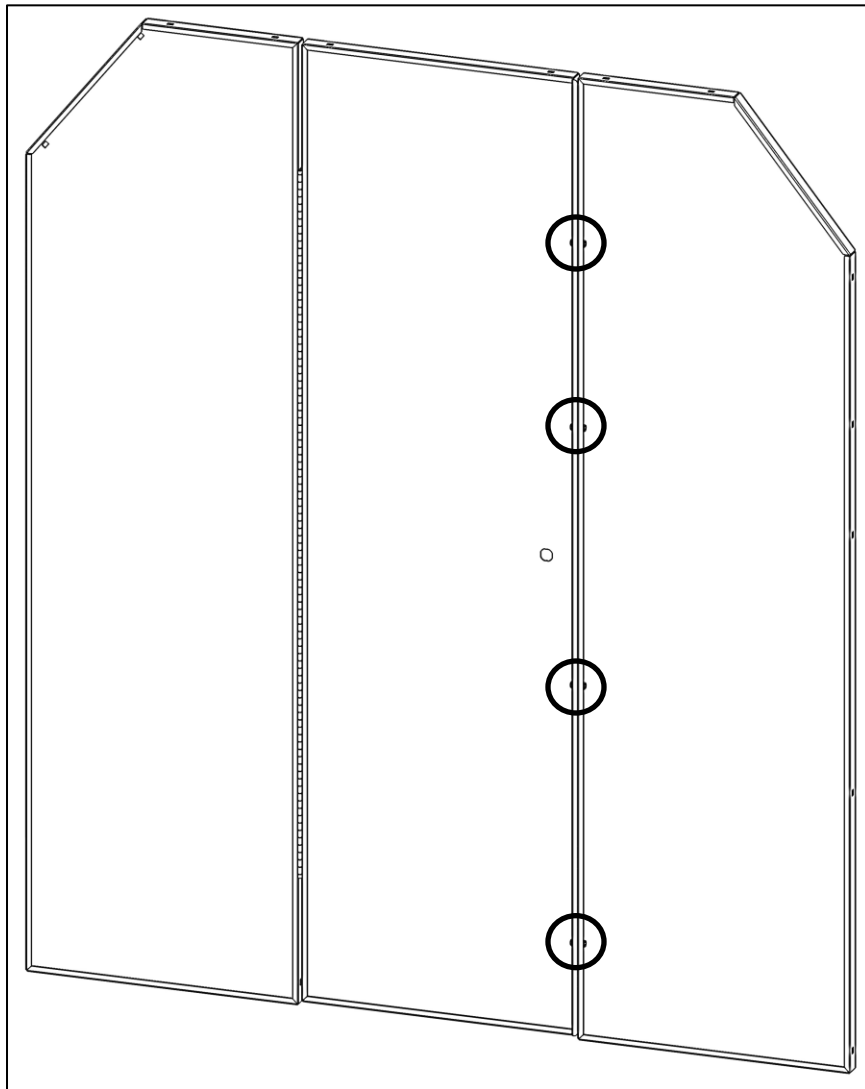
- Place both partition pieces flat on the ground or on a table as shown. Be sure to have the flanges facing upward so you can access the bolt holes.



- Bolt together using a 1/4" x 5/8" flanged hex bolt and a 1/4" flanged lock nut.
- If installing the Center Panel Latch & Door Lock Kit (40620), be sure to bolt two flat washers in between the two panels at each location. This is used to get correct spacing.
- **If no door kit is being used, the washers between panels are not needed.**



- Repeat 3 more times in the locations as shown below. Be sure to insert the washers between the panels if the door kit is being installed.
- Leave bolts snug tight to allow movement until partition is installed into vehicle.



**Follow instructions of desired wing kit to install into vehicle.**