

# KARGO MASTER®

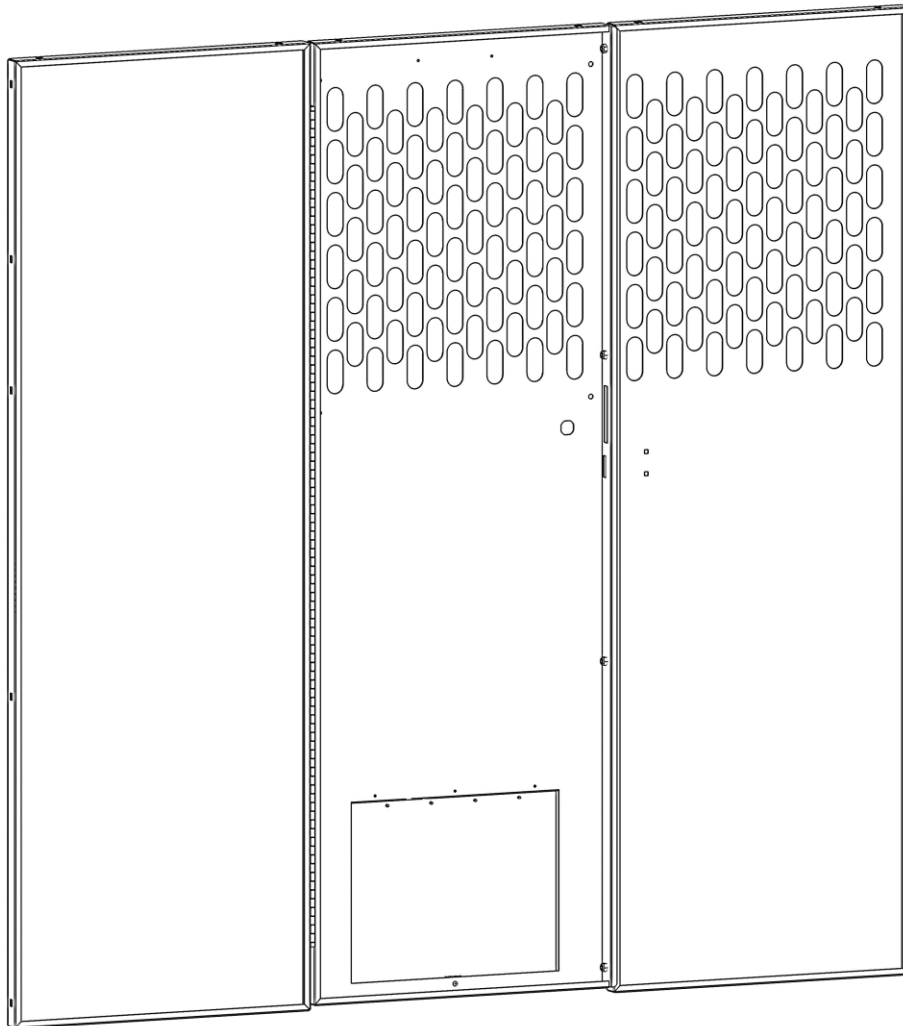
WE PUT EVERYTHING WITHIN REACH.

---

## Assembly Guide

40655

---



**\*PLEASE READ ALL INSTRUCTIONS AND WARNINGS PRIOR TO ASSEMBLING, INSTALLING, AND USING THIS PRODUCT.\***

**Warning**



Always check for wires, fuel tanks and lines, brake lines and other important vehicle functionality items prior to drilling and installing all products.

**Tools Needed**

3/8" Socket and Wrench	7/16" Socket and Wrench
------------------------	-------------------------

**Table of Contents**

Before You Begin ..... 1

Parts List ..... 1

Step 1 – Bolt Together..... 3

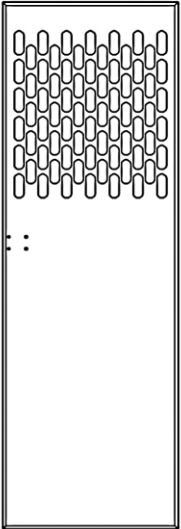
**Before You Begin**

- Read all instructions prior to assembling or installing any Kargo Master product.
- Always locate your installation locations prior to performing any work.
- Be sure to have the wing kit for your van application available.

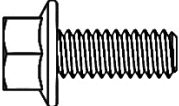

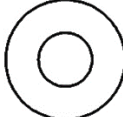
**Parts List**

ITEM NO.	ITEM	PART NUMBER	DESCRIPTION	QTY.
1		40655-10	PARTITION DOOR ASSEMBLY	1

**Parts List (Continued)**

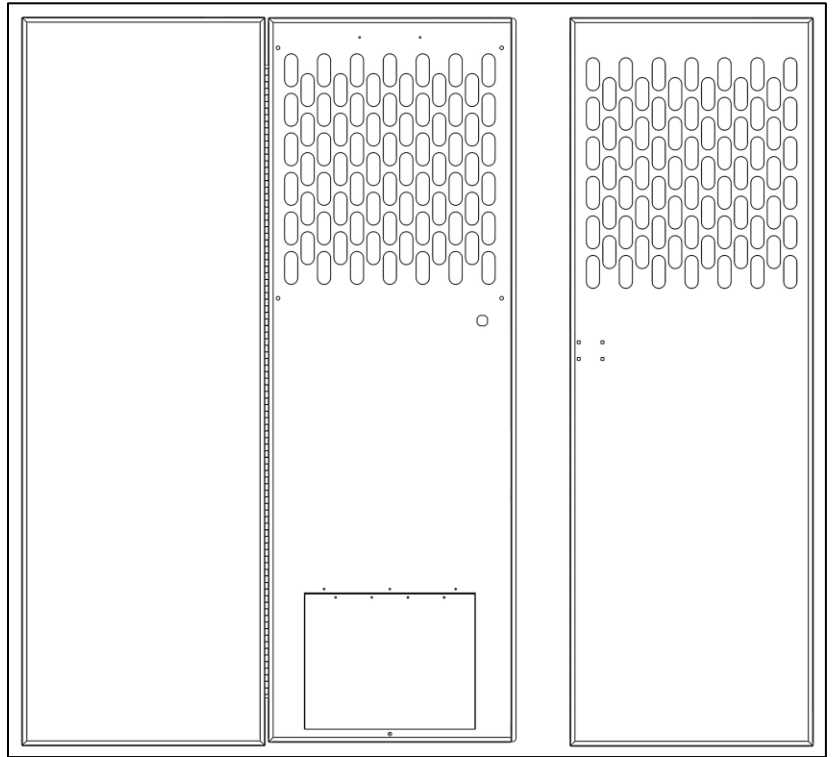
ITEM NO.	ITEM	PART NUMBER	DESCRIPTION	QTY.
2		40651-00-001	PARTITION SIDE PANEL	1
3		18-40600	ASSEMBLY HARDWARE KIT	1

**Hardware**

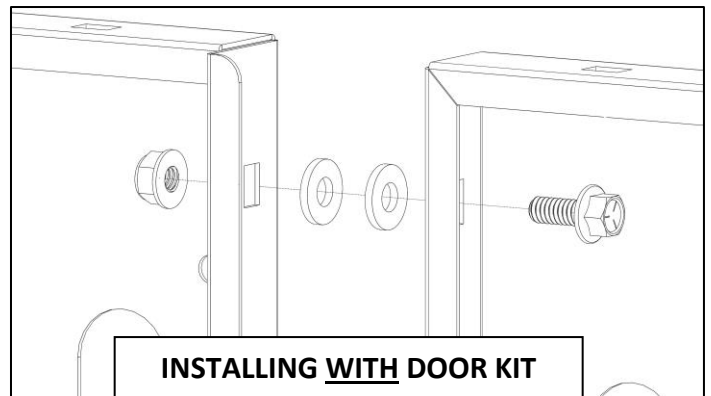
ITEM	HARDWARE TO SCALE	PART NUMBER	DESCRIPTION	QTY.
1		11106180	1/4"-20 X 5/8" FLANGED HEX HEAD	4
2			1/4-20 FLANGED NYLON INSERT NUT	4
3		11541082	1/4" FLAT WASHER	8

**Step 1 – Bolt Together**

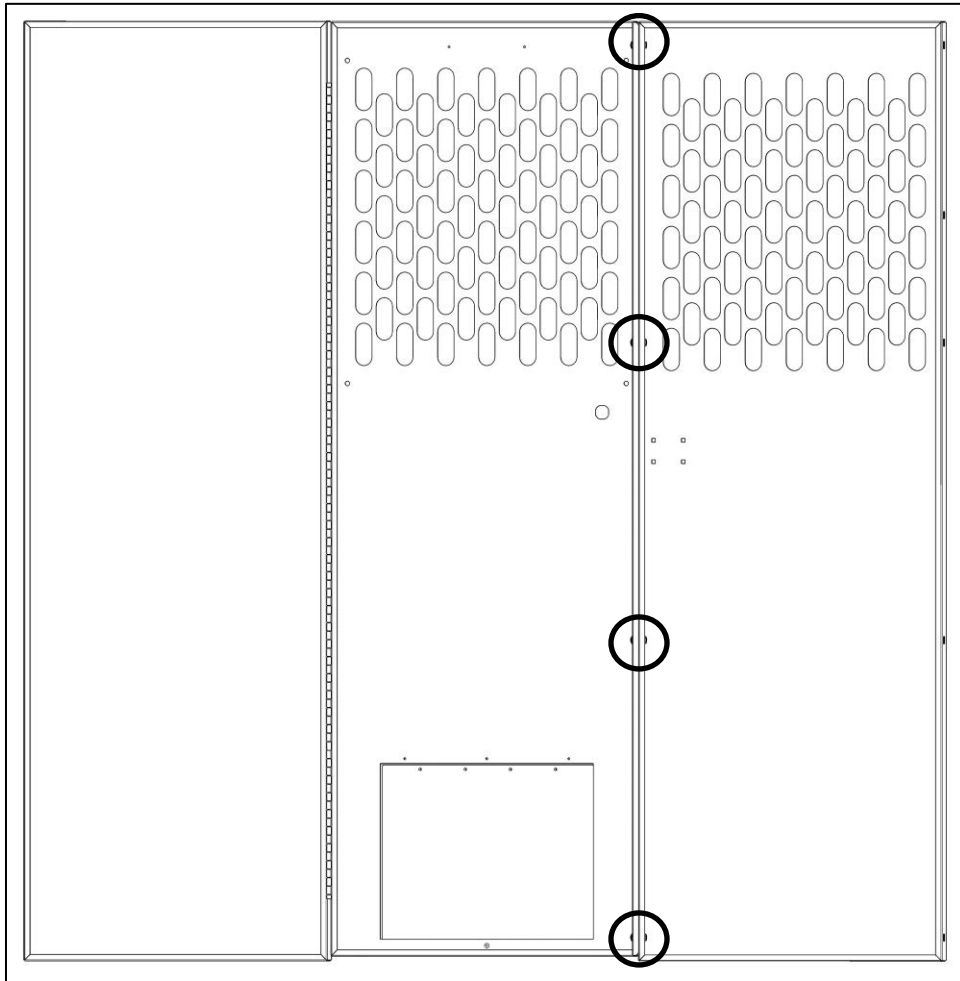
- Place both partition panels flat on the ground or table. Be sure to have the flanges facing upward so you can access the bolt holes.



- Using a 1/4" x 5/8" flanged hex bolt and a 1/4" flanged lock nut, bolt the side panel to the door panel.
- If installing the Center Panel Latch & Door Lock Kit (40620), be sure to put two flat washers in between the two panels. This is used to get correct spacing.
- If no door kit is being used, the washers between panels are not needed.



- Repeat three more times in the locations as shown below. Be sure to insert the washers between the panels if installing the door kit.
- Snug tighten hardware to allow movement until partition is installed into vehicle.



**Follow instructions of desired wing kit to install into vehicle.**