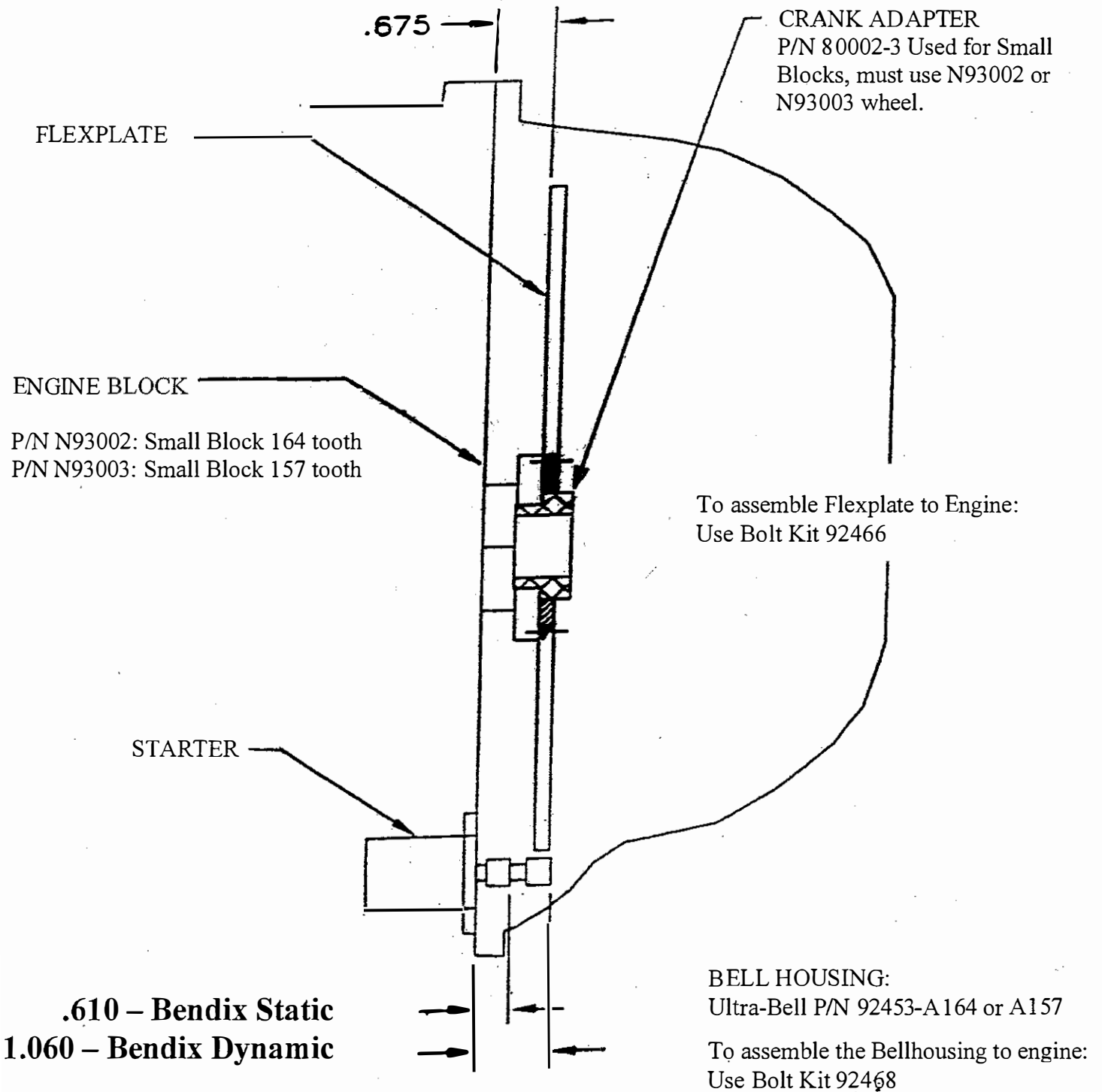


Ultra-Bell SBF to TH400/TH350 92453-A164 / 92453-A157



Preparation and Assembly

This system will accommodate 11" and smaller General Motors torque converters with a 10.75" bolt circle.

Prepare the transmission as suggested in figure 1.

To prepare transmission for Ultra-Bell assembly using the "Sawall" method, transmission should be inverted as shown. Remove the bellhousing leaving enough material to finish with a die grinder.

NOTE: It is not necessary to remove the pump during this operation. DO NOT ALLOW metal shavings to enter the transmission. COVER ALL OPENINGS. DO NOT cut below the top of the pump rail, DO NOT cut into the pan rail.

NOTE: This operation may also be done using a milling machine.

The finished dimension taken from the rear surface is:

Powerglide: 9- 3/16"

TH350: 15-1/8"

TH400: 17-5/8"

CAUTION: DIMENSION MAY VARY WITH YOUR TRANSMISSION CASE

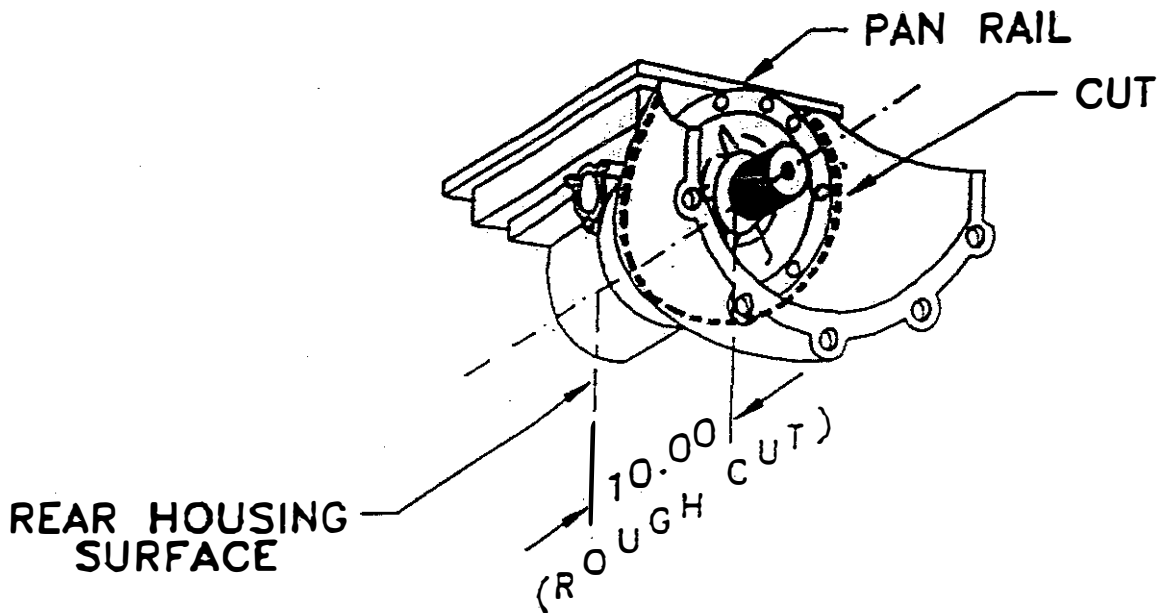


Figure 1

Prepare Transmission case and attach the Bellhousing as indicated in Figure 2.

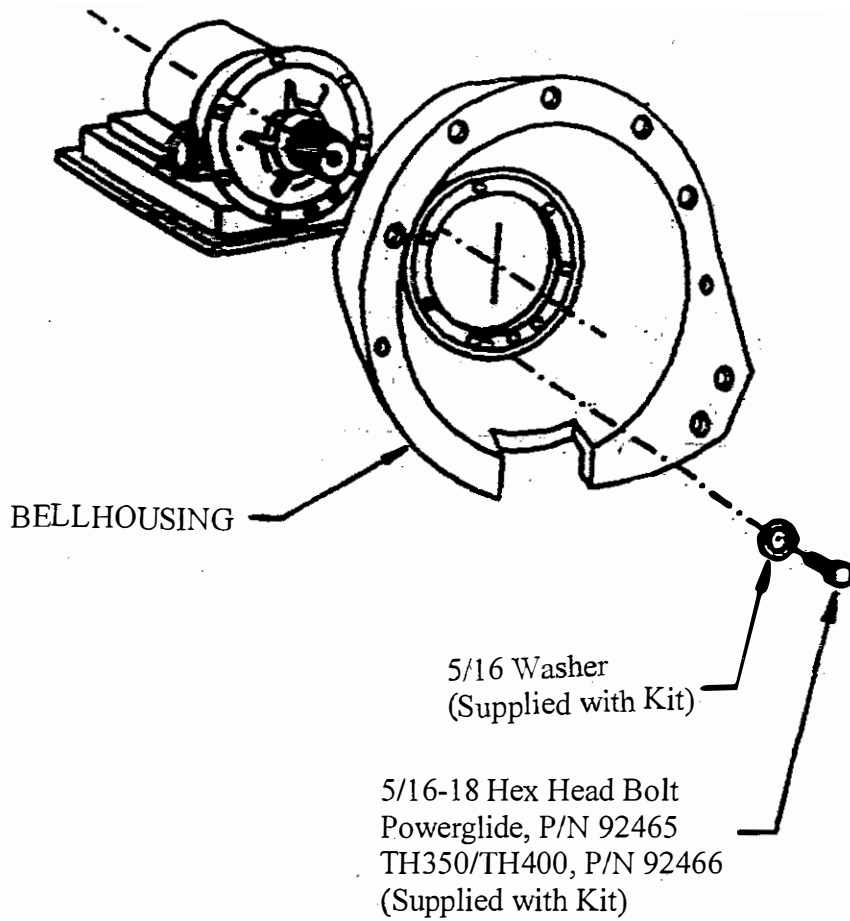


Figure 2

Use Bolt Kit P/N 92467 To mount Assembly to Engine

NOTE: Install the Ultra-Bell using bolts and washers provided. A small amount of sealant should be applied to washer. Apply "Loc-Tite" red to threads of screws and torque to 20 ft lbs.