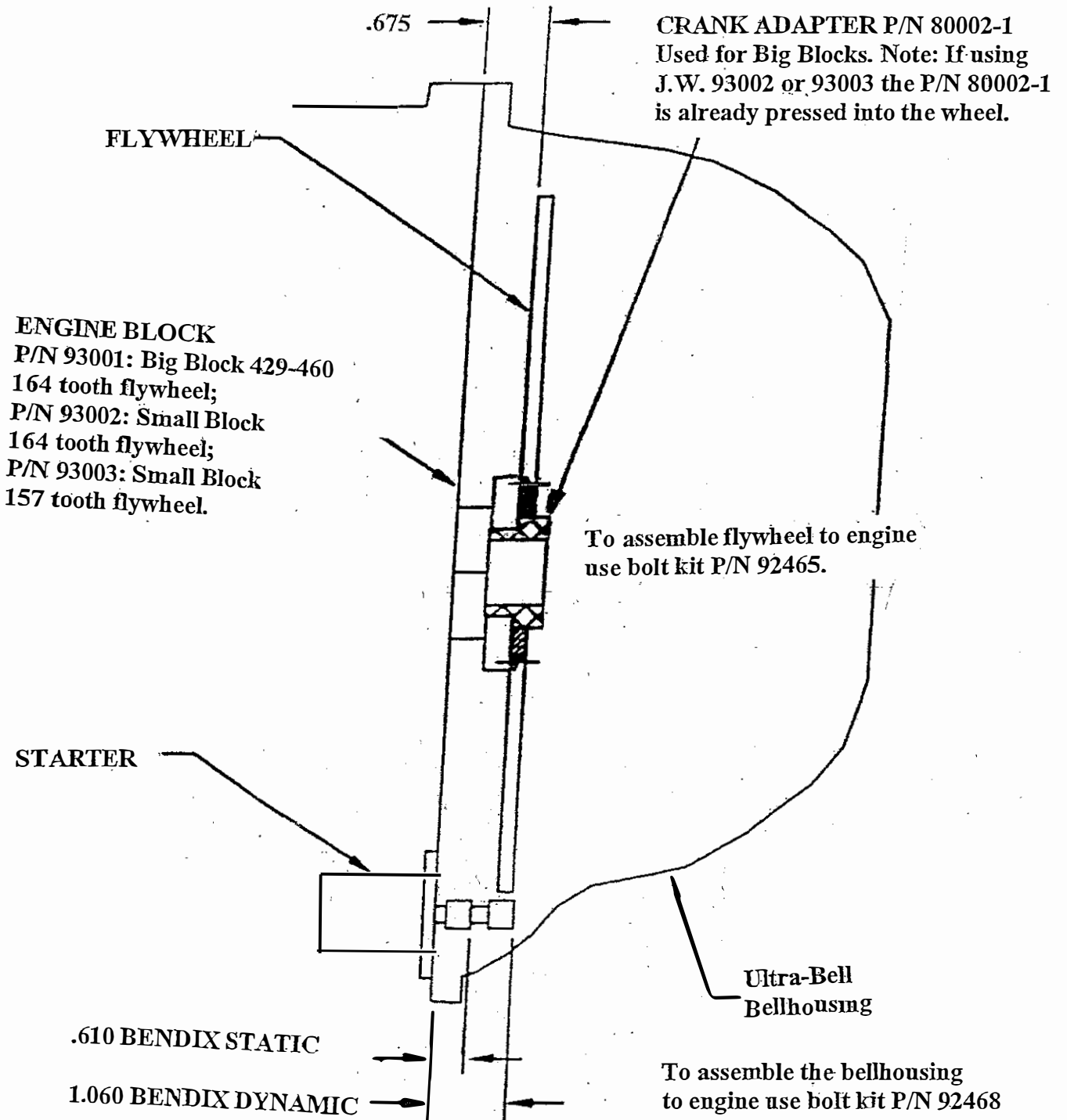


BELLHOUSING

92453-164 and 92453-157



## PREPARATION & ASSEMBLY

This system will accommodate 11" and smaller General Motors torque converts with a 10 3/4" bolt circle.

Prepare the transmission as suggested in Figure 1.

To prepare the transmission for ULTRA-BELL assembly using the "Sawsall" method, the transmission should be inverted as shown. Remove the bellhousing leaving enough material to finish with a die grinder. Note: This operation may also be done using a milling machine.

**NOTE:** It is not necessary to remove the pump during this operation. **DO NOT ALLOW** metal shavings to enter the transmission. **COVER ALL OPENINGS.** **DO NOT** cut below the top of the pump rail, **DO NOT** cut into the pan rail.

The finished dimension taken from the rear housing surface is:

PG .....9 13/16"

TH 350.. 15 1/8"

TH400...17 5/8"

**CAUTION: DIMENSION MAY VARY WITH YOUR TRANSMISSION CASE.**

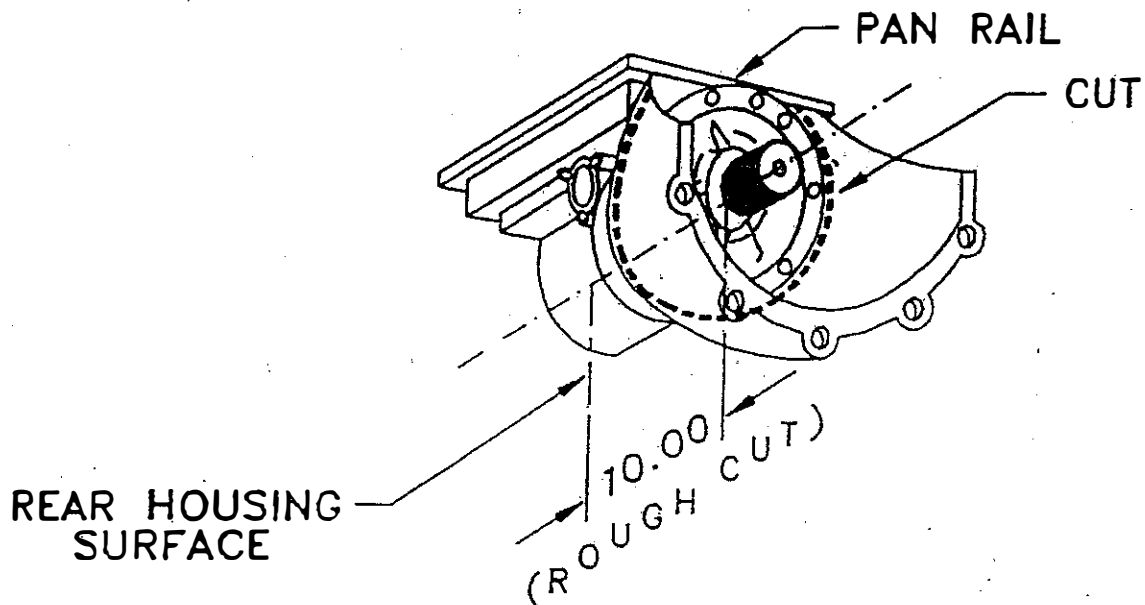


Figure 1

Prepare transmission case and attach the Bellhousing as indicated in Figure 2.

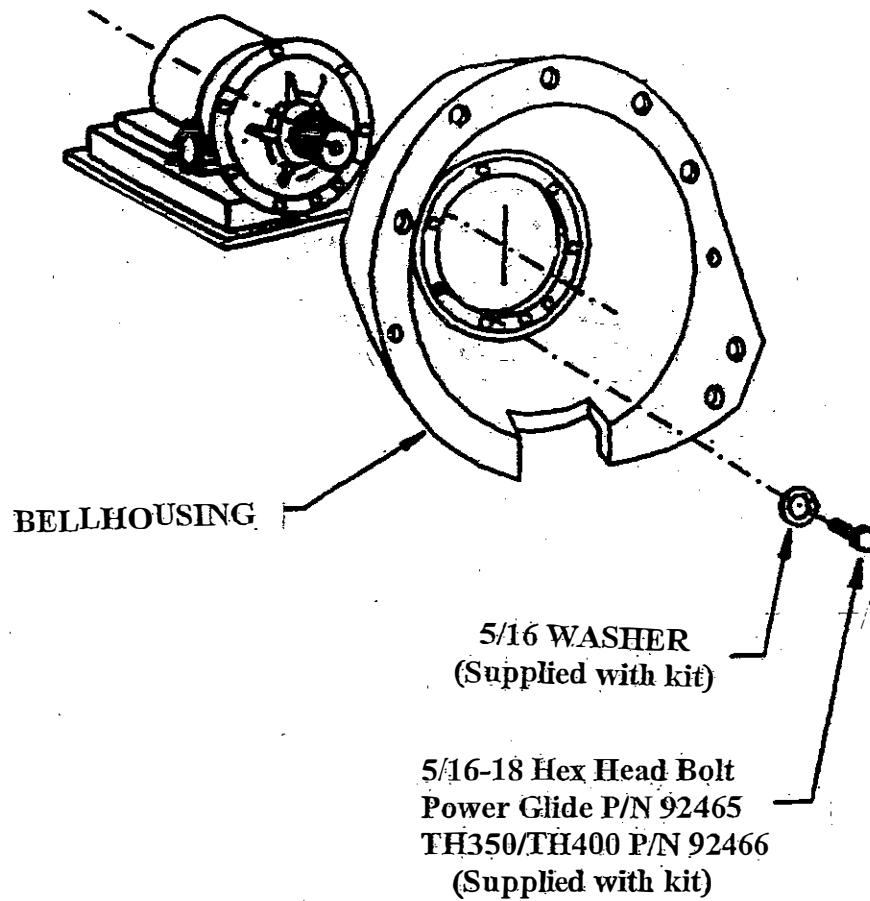


FIGURE 2

Use bolt kit P/N 92467 to mount assembly to engine.

**NOTE:** Install the ULTRA-BELL using bolts and washers provided. A small amount of sealant should be applied to washer. Apply "Loc-Tite" RED to threads of screws and torque to 20 ft. lbs.

**PLACE O-RINGS IN MACHINED POCKETS ON TRANSMISSION SIDE OF BELLHOUSING AS SHOWN. HOLD O-RINGS IN PLACE WITH A DAB OF TRANSMISSION GEL. BOLT BELLHOUSING TO CASE AS PER INSTRUCTIONS.**

