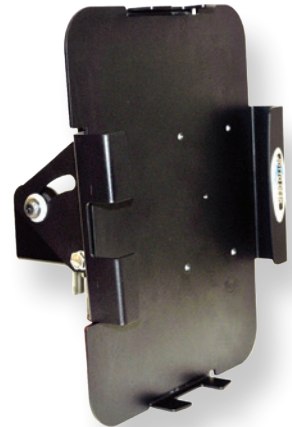
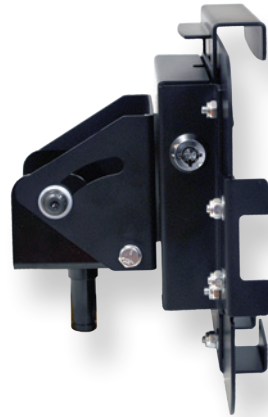


iPad MOUNTING STATION

***DESIGNED TO FIT iPad 1 / iPad 2 / iPad 3
/ iPad Air AND WORKS WITH EXISTING
JOTTO DESK MOUNTS!***



**** Adjustable to fit tablets from 7.5 - 8.3" x 9.84 - 12.5" and 0.84" deep***



***QUICK
RELEASE
HANDLE***

***SNUG FIT FOR
YOUR TABLET***



landscape



portrait

***LOCK AND
SECURE IN
PLACE***

HOW TO ORDER:

***If currently using a Jotto
Desk Laptop Mount and are
transitioning to a Tablet, simply
order 450-4131.***

**** We require use of a protective case to further secure tablet and prevent vibration against metal parts.***