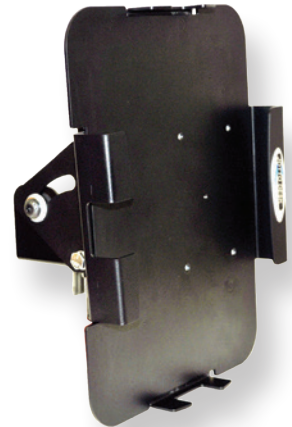
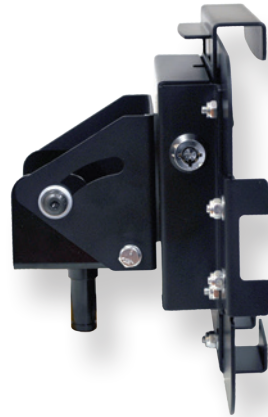


# ***iPad MOUNTING STATION***

***DESIGNED TO FIT iPad 1 / iPad 2 / iPad 3  
/ iPad Air AND WORKS WITH EXISTING  
JOTTO DESK MOUNTS!***



***\* Adjustable to fit tablets from 7.5 - 8.3" x 9.84 - 12.5" and 0.84" deep***



***QUICK  
RELEASE  
HANDLE***

***SNUG FIT FOR  
YOUR TABLET***



***landscape***



***portrait***

***LOCK AND  
SECURE IN  
PLACE***

## **HOW TO ORDER:**

***If currently using a Jotto  
Desk Laptop Mount and are  
transitioning to a Tablet, simply  
order 450-4131.***

***\* We require use of a protective case to further secure tablet and prevent vibration against metal parts.***