



92-410,412,414

99-10 Ford 250/350/450

ENDEAVOUR INSTALLATION SHEET

410 - Regular Cab

QTY.	PARTS LIST
16	5/16"x3/4" Hex Bolt
8	5/16 Flat Washers
12	5/16 Flange Nuts
4	5/16" Nut Clips
4	Brackets
4	Bracket Clamps

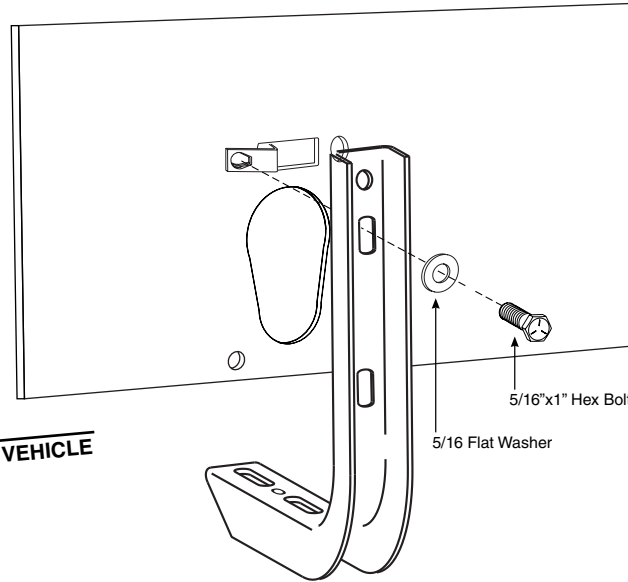
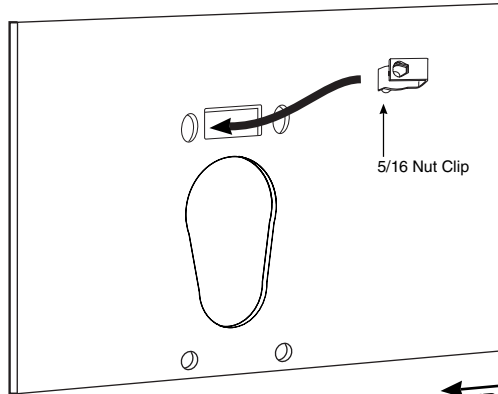
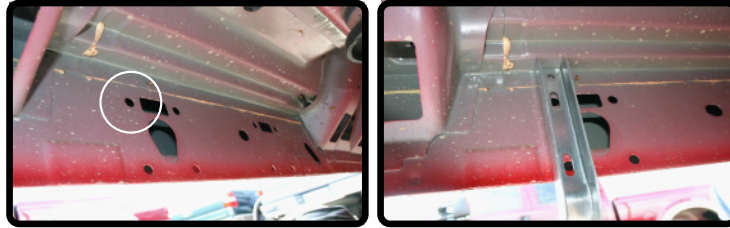
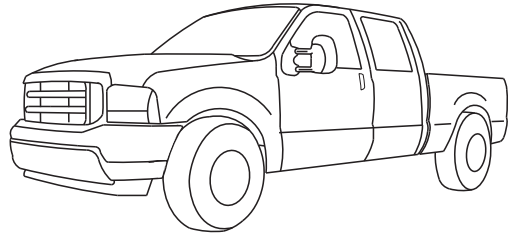
412 - Super Cab

QTY.	PARTS LIST
24	5/16"x3/4" Hex Bolt
12	5/16 Flat Washers
18	5/16 Flange Nuts
6	5/16" Nut Clips
6	Brackets
6	Bracket Clamps

414 - Crew Cab

QTY.	PARTS LIST
32	5/16"x3/4" Hex Bolt
16	5/16 Flat Washers
24	5/16 Flange Nuts
8	5/16" Nut Clips
8	Brackets
8	Bracket Clamps

- STEP 1** Remove contents from box and check for damage parts. Verify all parts are present, making sure to read and understand instructions before beginning.
- STEP 2** Locate factory running board mounts on bottom side of the cab. Regular Cabs have 4 mount locations, Super Cabs have 6, and Crew Cabs have 8.
- STEP 3** Install nut clip into factory location as seen in Fig 1a
- STEP 4** Position the main bracket and start the 5/16 bolt, washer through the pinch weld, then the lower slot in the bracket, followed by a 5/16" flange nut on the inside of the bracket. Attach the top of the bracket with 5/16 bolt and flat washer through bracket into 5/16" Nut clip. Figure 1b
- STEP 5** **Mounting board to vehicle.**
- 1) Place clamp brackets on main bracket, turn 90 degrees to the main brackets. Place 5/16" hex bolt through top of bracket clamp in oblong hole to center hole in main bracket, placing 5/16" flange nut on bottom side. Fig 2a
 - 2) Place running board on main brackets, making sure that opening and the bottom of the board goes over the clamp brackets.
 - 3) Rotate clamp brackets above main brackets, making sure that both edges of the running board are in between the clamp bracket and the main bracket. Install 5/16" hex bolt through center hole of bracket clamp and oblong hole of main bracket placing 5/16" flange nut on bottom side. Fig 2b
 - 4) Adjust board to be centered under the cab of the vehicle and tighten the clamp brackets to the main brackets. Make sure all remaining hardware is tightened and test the running boards for attachments.

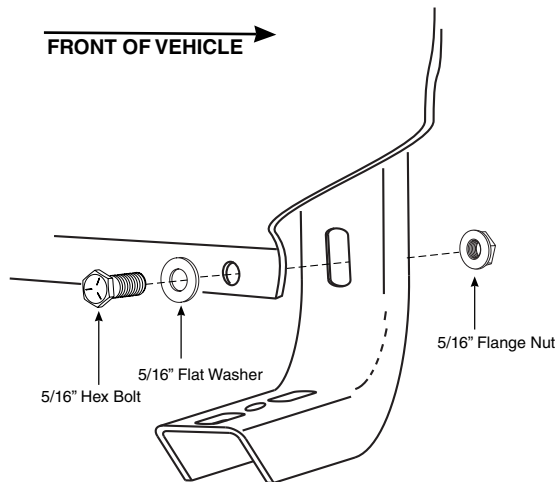
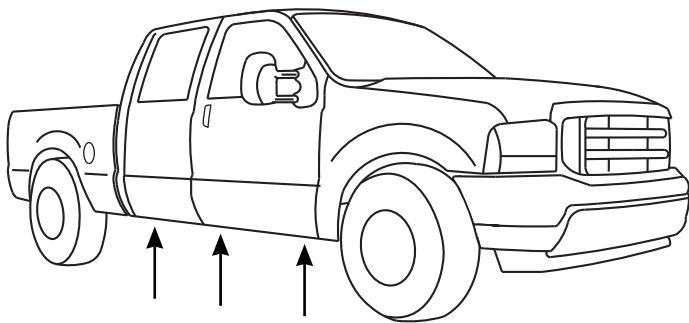


← FRONT OF VEHICLE

FIG 1a

FIG 1b

→ FRONT OF VEHICLE



MOUNTING BOARD TO BRACKET

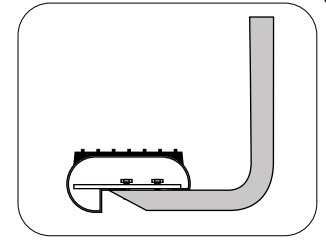


FIG 2a

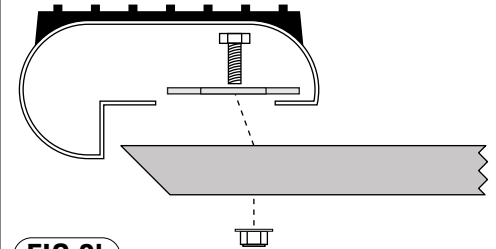


FIG 2b TOP VIEW

