

American Made = American Jobs

**IRON CROSS**  
AUTOMOTIVE INC.

**2004-2014 Nissan Titan**  
20-915-04 / 22-915-04 / 24-915-04



## Front Bumper Installation Instructions

Hardware			
6	1/2" Hex Bolts	10	1/2" Lock Washers
16	1/2" Flat washers	6	1/2" Hex Nuts
4	12mm/1.25 x 35mm		

## Removal

1. First, you will need to remove your grill. Your grill is held on with (9) twist lock connectors. You will need a small flat blade screw driver to turn the connector 1/4 turn to let the square peg come out the square hole on the grill shell. Go to each connector, twist, and gently pull out on the grill shell. Once all connectors have been released, the grill will come directly out the front of the truck.

Fig.1 and Fig. 2



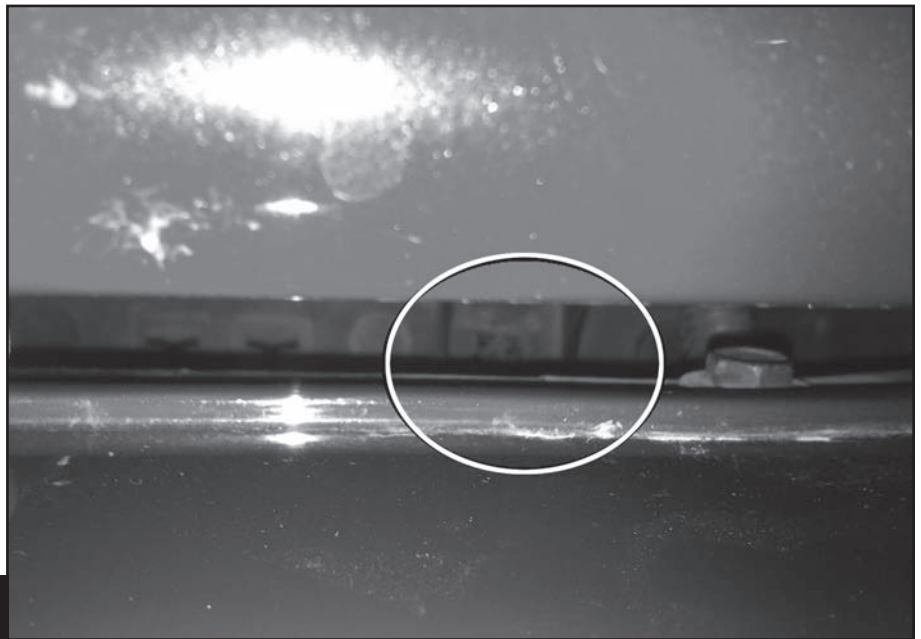
Fig 1



**Fig 2**

2. If you don't have a long enough screw driver to get to the connectors between the grill shell and bumper cover, you may have to go to step 6, and then go behind the front bumper from the skid plate opening.

Fig. 3



**Fig 3**



3. After the grill is removed from the truck, you must take the twist lock connectors out of the radiator support. You do this by squeezing the connector on top and bottom and pulling them out. Then you must reinstall them in the grill. This will allow the grill to just be pushed back in place on the radiator support after the bumper is attached.

4. Remove the (2) bolts attaching the rubber air deflector to the bumper cover from the skid plate.

5. Remove the (6) bolts attaching skid plate and discard skid plate and hardware.

6. There are (3) plastic screws holding the inner fender liner to the bumper. Remove these at this time. (2) are in the wheel well and (1) is on the underside facing up from the ground.

Fig. 4

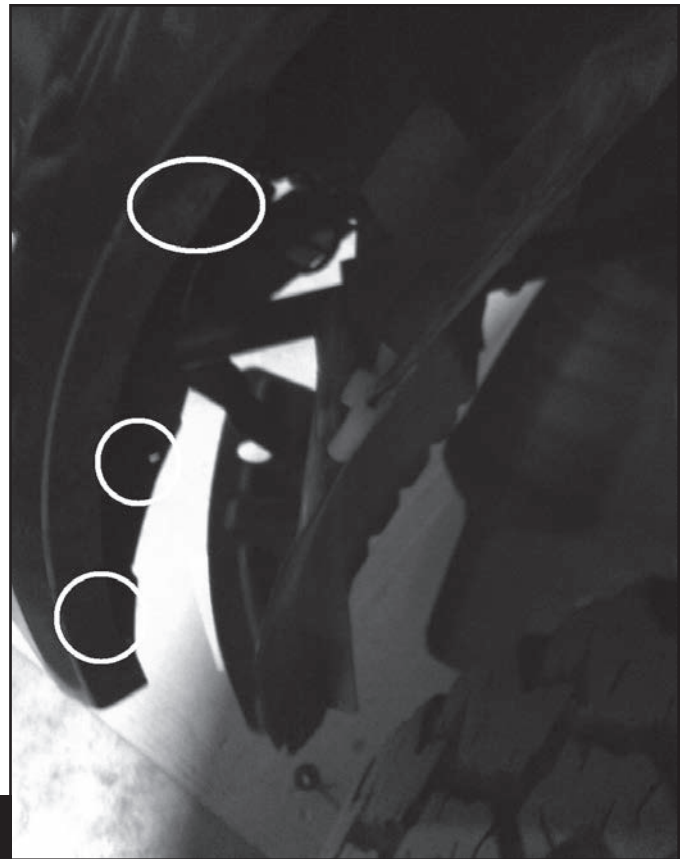


Fig 4

7. Inside the inner fender, remove the (2) bolts attaching the upper bumper cover to the fender.

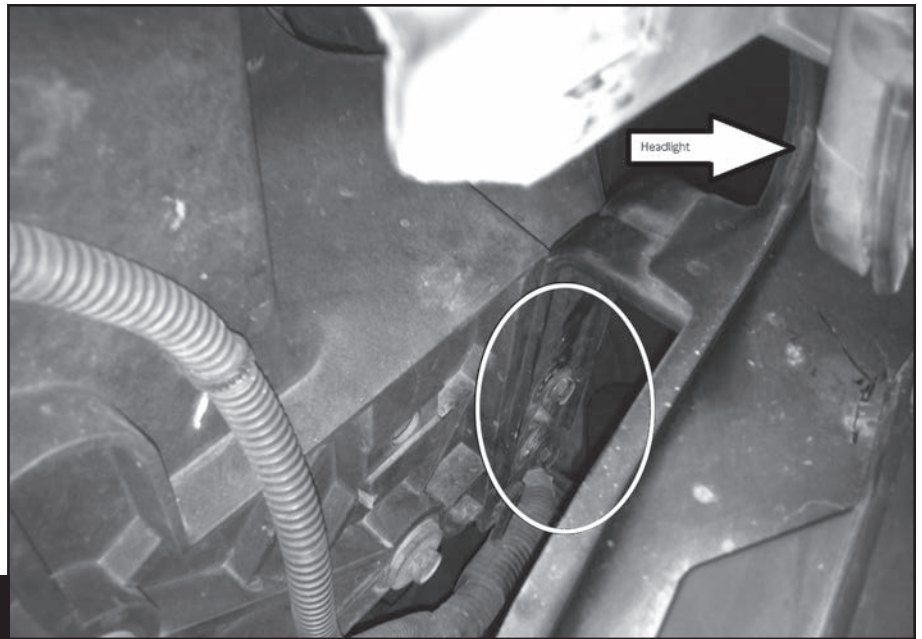
Fig. 5



Fig 5



8. Remove (4) bolts attaching bumper cover to radiator support that are behind and underneath the headlights.  
Fig. 6



**Fig 6**

9. Remove the last (4) bolts attaching the bumper cover to the radiator support. Your bumper may drop slightly while taking these out.  
Fig.7



**Fig 7**

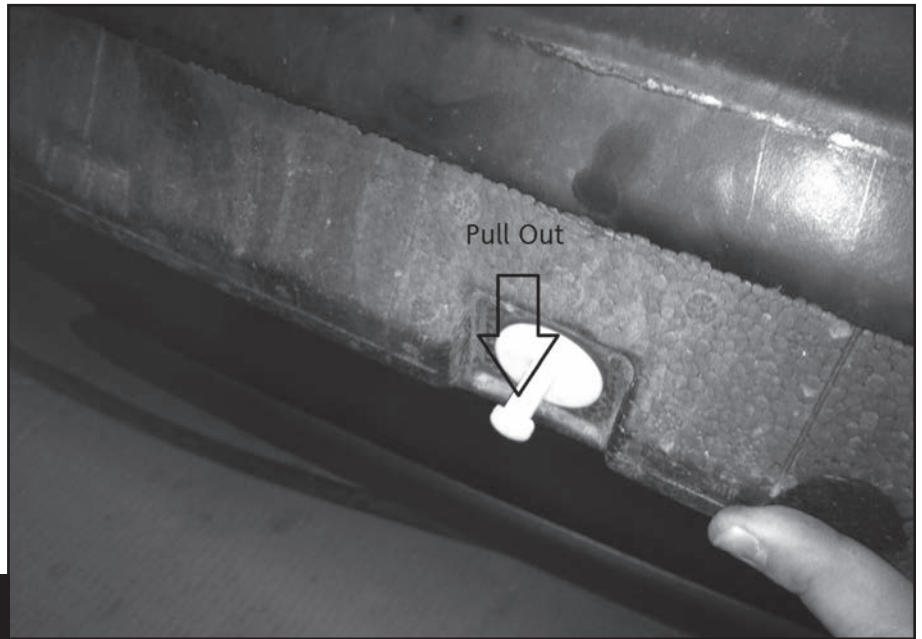


10. You can now remove your factory bumper cover.

11. Remove and discard the foam crash impact piece by pulling out on the center lug of the clip. The clips can then be pulled out from the frame. Fig. 8

12. Remove the bumper support end caps and support brace from the frame. There are (3) bolts for the cap on the front frame rail and (2) bolts for the support brace where it attaches to the frame.

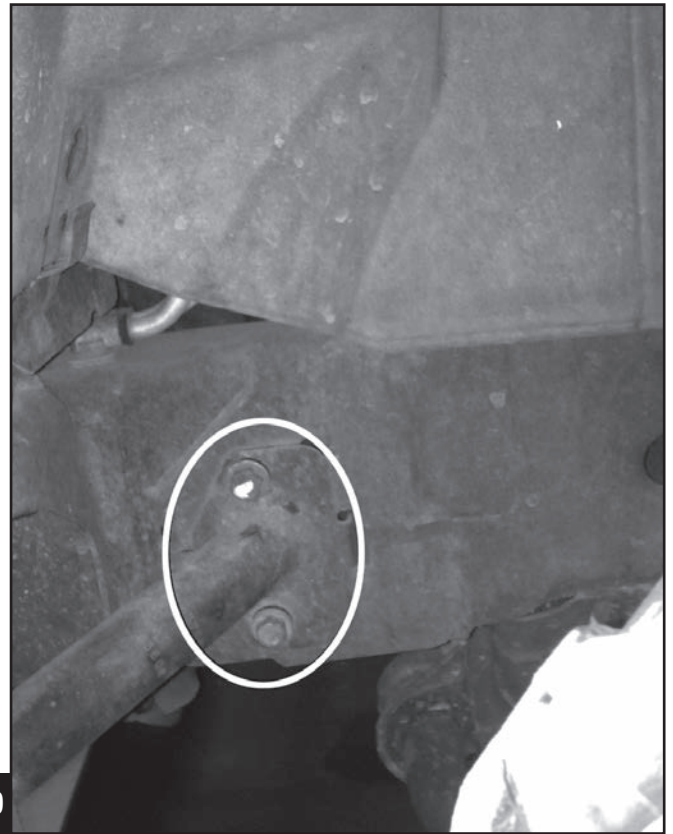
Fig. 9 and Fig. 10



**Fig 8**



**Fig 9**



**Fig 10**



13. Take off the factory tow hooks and skid plate mount by removing the (2) bolts holding them on.

Fig. 11

14. You are now ready to install your Iron Cross bumper.

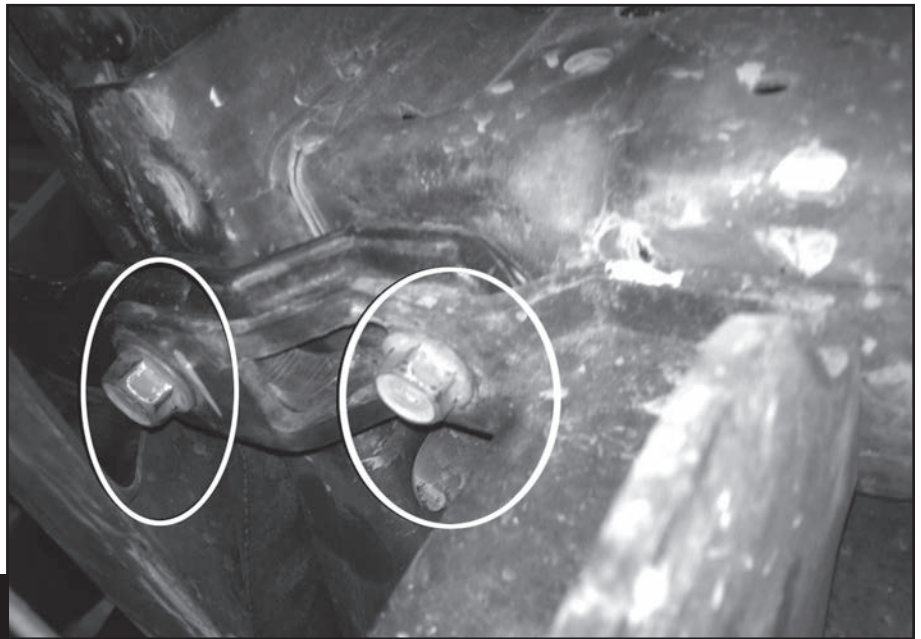


Fig 11

## Installation

1. Attach the bumper brackets by installing them at the factory tow hook mount locations. Use the supplied 12mm bolts, washers, and lock washers. Snug the bolts at this time allowing adjustment. Spacing in between the brackets should be just over 28". Fig. 12 driver side shown.

2. Slide bumper onto truck. Make sure the mounts welded in the bumper go inside the brackets on the truck. Attach the bumper to the brackets using the 1/2" hardware provided.



Fig 12

3. Align the bumper side to side, then tighten the brackets to the truck to 65 ft/lbs.

4. Align the bumper front to rear and up and down to the vehicle. Make sure the bumper doesn't stick into the wheel well. Also make sure to leave 1/2" gap between the bumper and any body parts. You can tighten the bumper mounts to the brackets to 65 ft/lb.

5. Tuck the factory fender liners in behind the bumper and trim to your liking.

6. Reinstall the factory grill now. Make sure you have taken all the connectors out of the radiator support and placed them in the grill shell. This will allow you to align the connectors into the holes on the radiator support and slide them into the correct location. You may have to tap on the grill shell making sure the clips pop into place. Pull gently a couple times on the grill in different areas to make sure its attached properly.

