

American Made = American Jobs

IRON CROSS
AUTOMOTIVE INC.

Installation Instructions

2012-2014 TOYOTA TACOMA 20/22/24-705-12



Hardware

6	1/2" Bolts, nuts, and lock washers	2	Frame brackets
12	1/2" Flat washers	2	Headlight brackets

1. Remove (2) bolts and (2) clips holding grill on. Remove grill and set aside for reinstall (**Fig 1**).

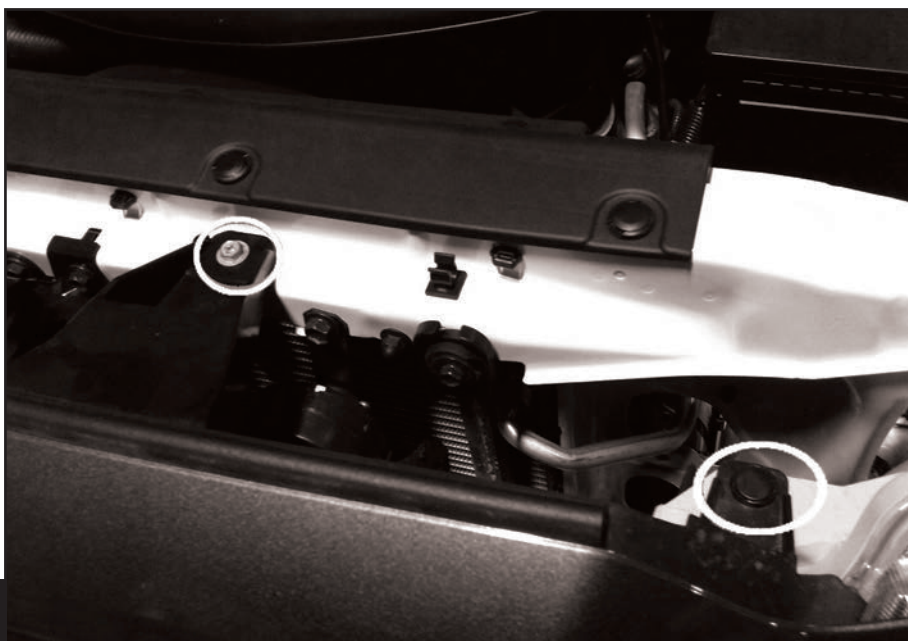


Fig 1

2. Pull out lower headlight filler from the grill opening. There is a push-in clip holding it in. Once popped out, slide the piece toward the center of the truck, allowing it to slide off the fender tab. Keep part for reinstall later (**Fig 2**).

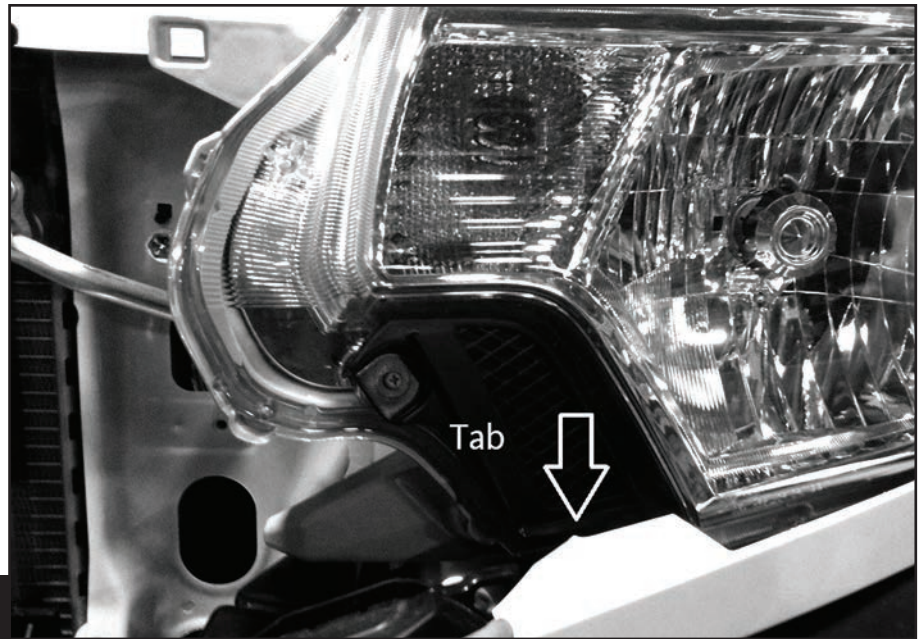


Fig 2

3. Remove (3) clips from top of [bumper cover](#) and discard (**Fig 3**).

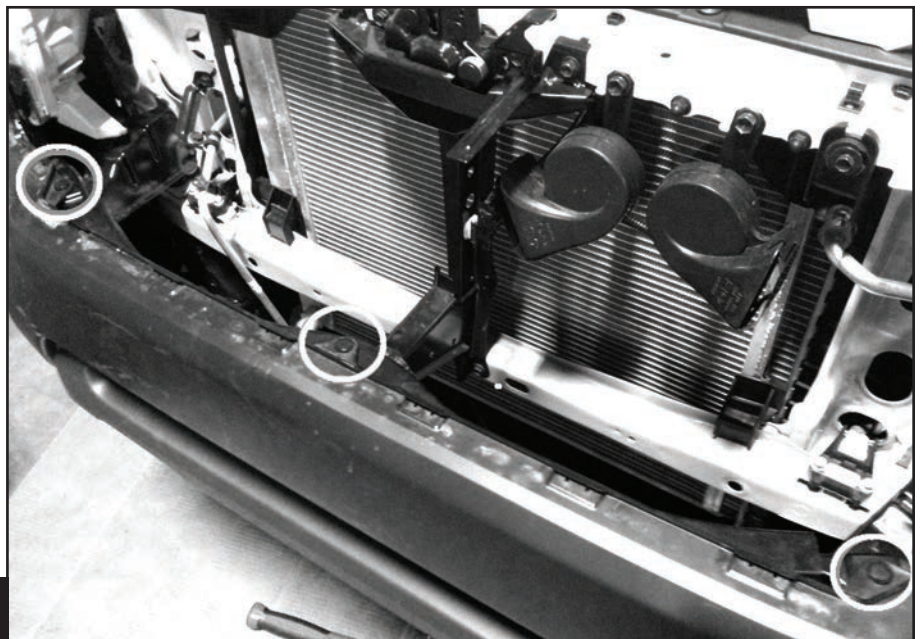


Fig 3



4. Remove and discard (2) bolts attaching fender to bumper cover inside the upper wheel well area (**Fig 4**).

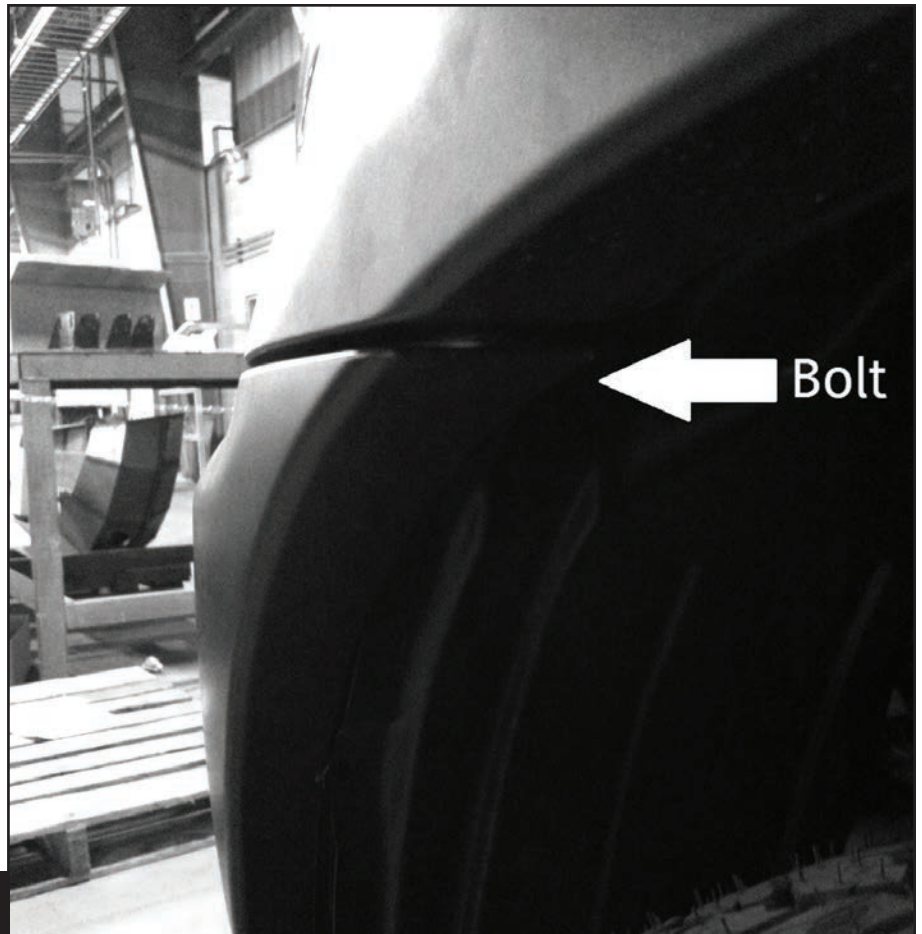


Fig 4

5. Remove and discard (4) screws and (2) push clips securing inner fender to bumper cover (**Fig 5**).



Fig 5



6. Remove and discard (2) bolts on the underside of the bumper cover attaching it to the crash bar (**Fig 6**).

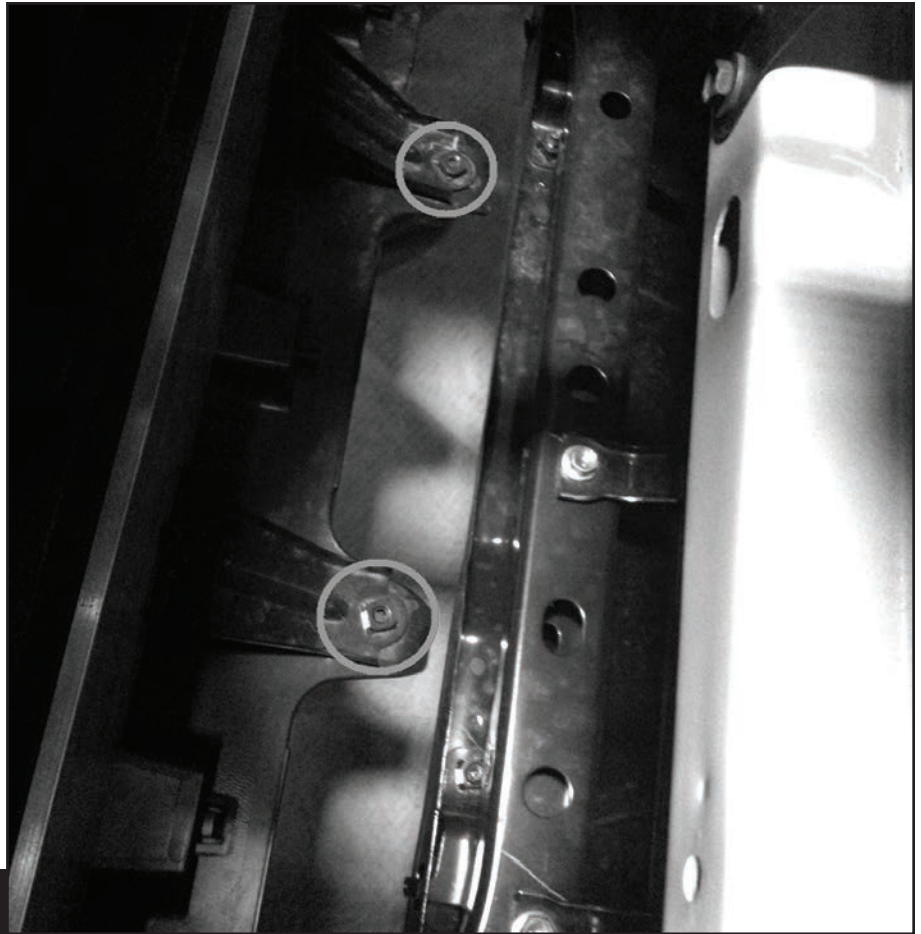


Fig 6

7. Pull Bumper cover off and discard. The cover will need to be gripped inside the wheel well and pulled away from the vehicle as there is a press in clip under the fender. Then the cover can be removed to the front of the vehicle after it is unhooked from the fender area (**Fig 7**).

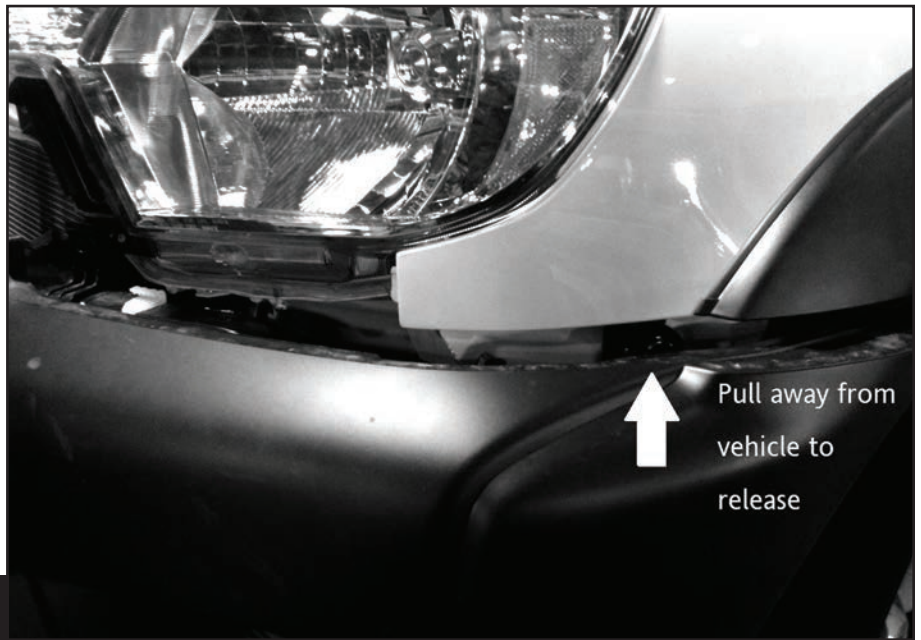


Fig 7



8. Remove (6) nuts and take off and discard aluminum crash bar.

9. Remove (3) nuts holding on upper center bumper support and discard (Fig 8).

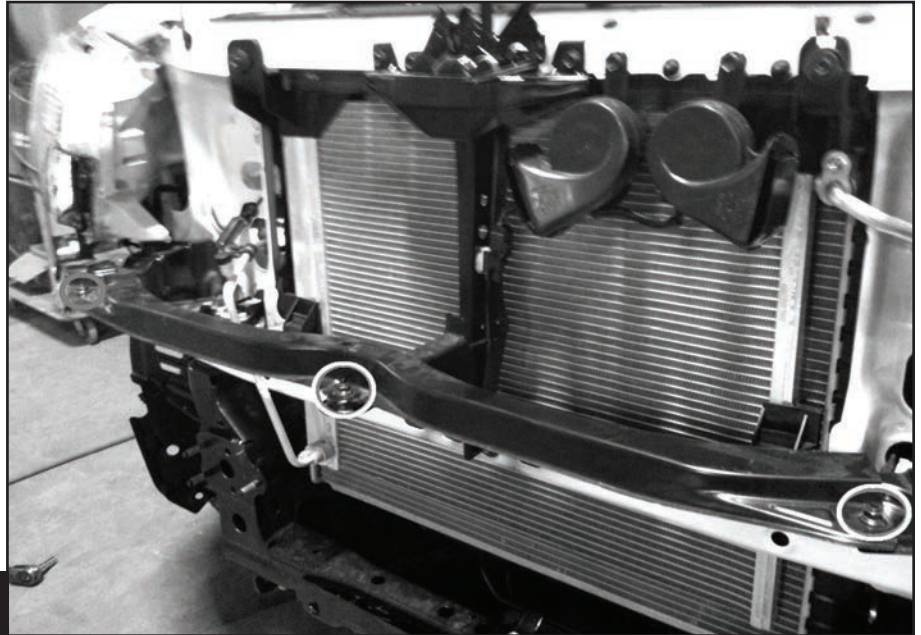


Fig 8

10. Remove (4) nuts attaching lower headlight filler support bracket to the fender. Discard bracket at this time (Fig 9).



Fig 9



11. Remove (2) screws holding bumper clips to fender. Remove and discard clips (**Fig 10**).



Fig 10

12. Bend or remove the center support bracket for the bumper cover. This will get in the way of your winch access whole. You can cut it off or just bend it back parallel to the radiator (**Fig 11**).

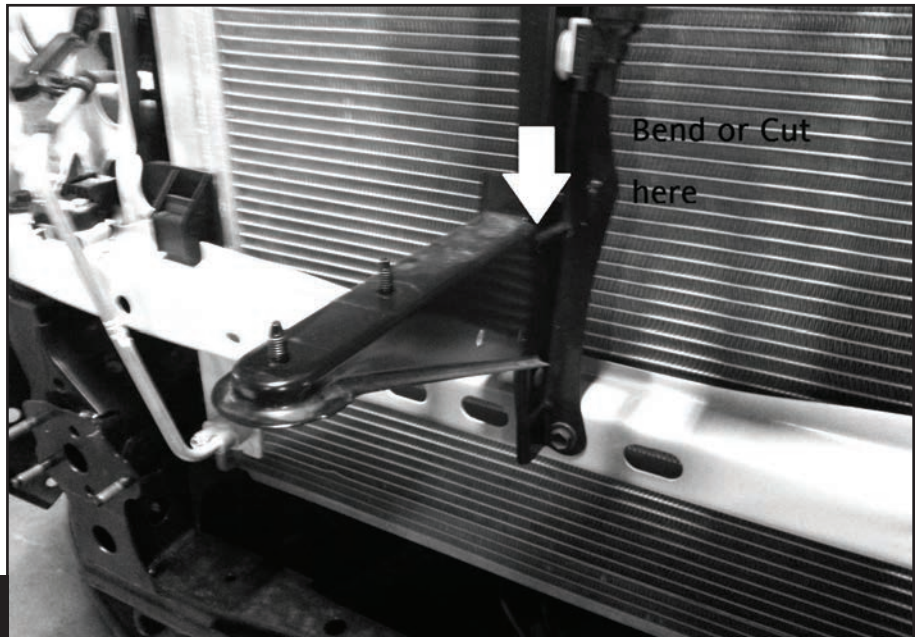


Fig 11



13. Remove (4) bolts attaching lower headlight support. The clip attached to the headlight will just slide off the headlight to the side. You will need to remove the plastic clip by depressing the tabs in the two square parts to get them to release (**Fig 12**).

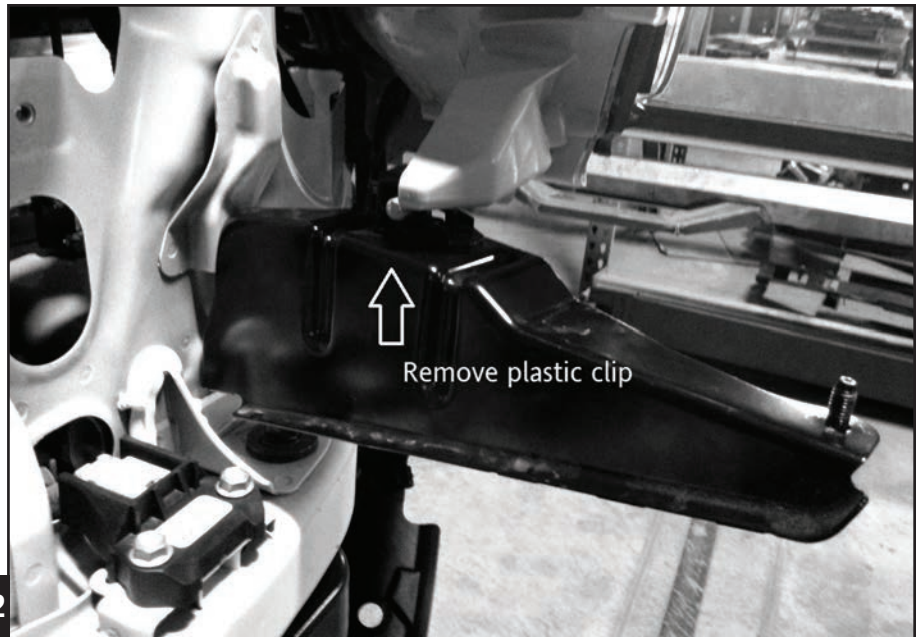


Fig 12

14. Place factory clip-in supplied replacement lower headlight support. Attach support back to headlight with clip and bolt to radiator support using factory bolts (**Fig 13**).



Fig 13



15. Reinstall lower headlight filler. Slide onto bumper tab first, then push into hole on lower headlight support.

16. Attach Ironcross bumper brackets to frame using factory hardware from crash bar (**Fig 14**).

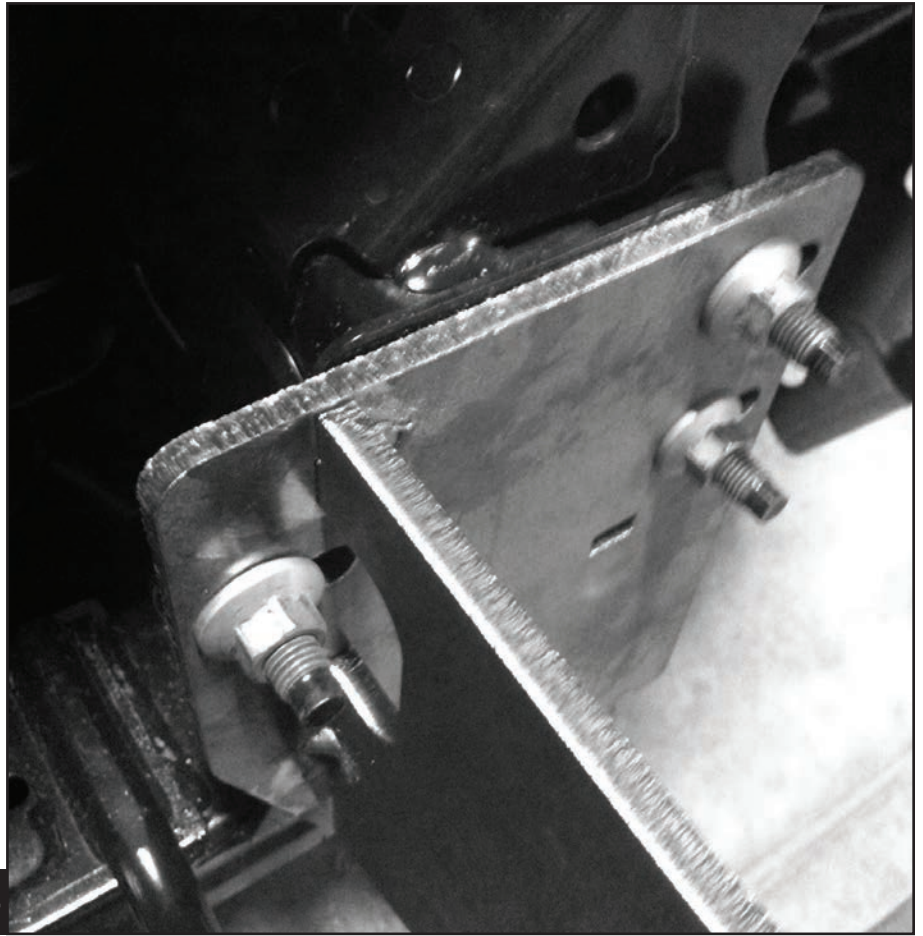


Fig 14

17. Attach Ironcross bumper to brackets using supplied hardware.

