

American Made = American Jobs



IRON CROSS
AUTOMOTIVE INC.

**2009-2015
Dodge Ram 1500**

615-09 615-13

Front Bumper Installation Instructions

Hardware			
6	1/2" Hex Bolts	6	1/2" Lock Washers
6	1/2" Hex Nuts	12	1/2" Flat washers
8	3/8"x 1 1/4" Hex Bolts	8	3/8"x 1 1/4" Lock Washers
8	3/8"x 1 1/4" Hex Nuts	16	3/8" Flat Washers

Vehicle Preparation

1. Remove the (4) clips holding on the radiator cover. Pull the cover off and set aside for reattachment. **Fig 1.**

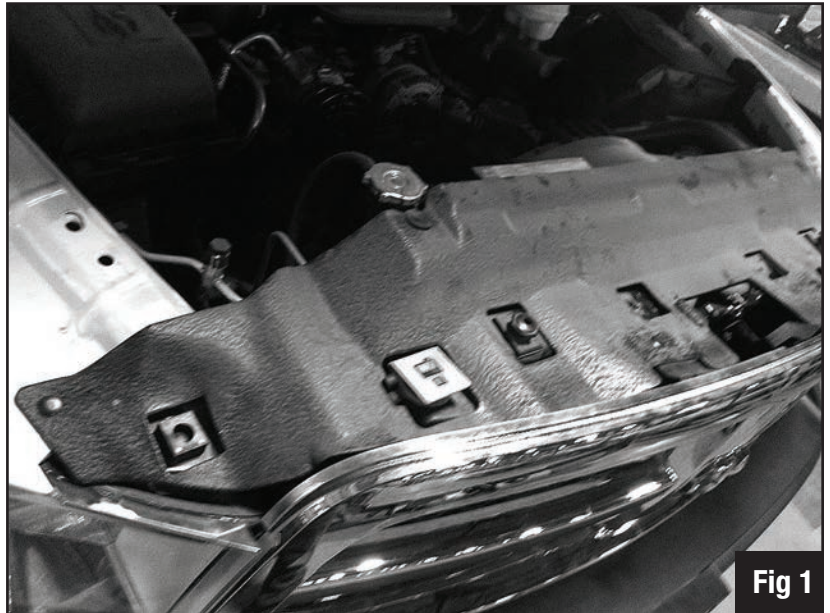


Fig 1



2. Remove (4) screws attaching grill to radiator support. Pull Grill from the bottom edge to pull grill out of radiator support. Set aside to be reinstalled. **Fig 2.**

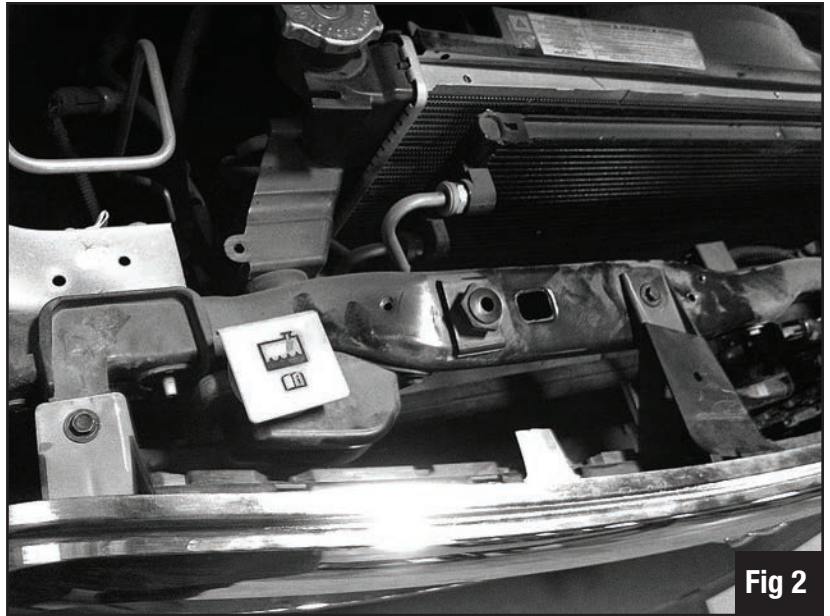


Fig 2

Steps 3 and 4 are referring to the passenger side of the vehicle. Once done, repeat for driver side.

3. Remove (s) screws in inner fender that attach the lower headlight trim piece, located directly below the headlights. **Fig 3.**



Fig 3



4. Pull back inner fender and upper trim piece to allow access behind the inner fender to remove (1) bolt, securing the headlight trim piece. Remove this piece and discard.
Fig 4, 5, & 6.



Fig 4



Fig 5



Fig 6



5. Remove (4) screws that hold on upper bumper trim piece. They are located on the ends of the plastic piece on the bottom side. Remove and discard. **Fig 7.**

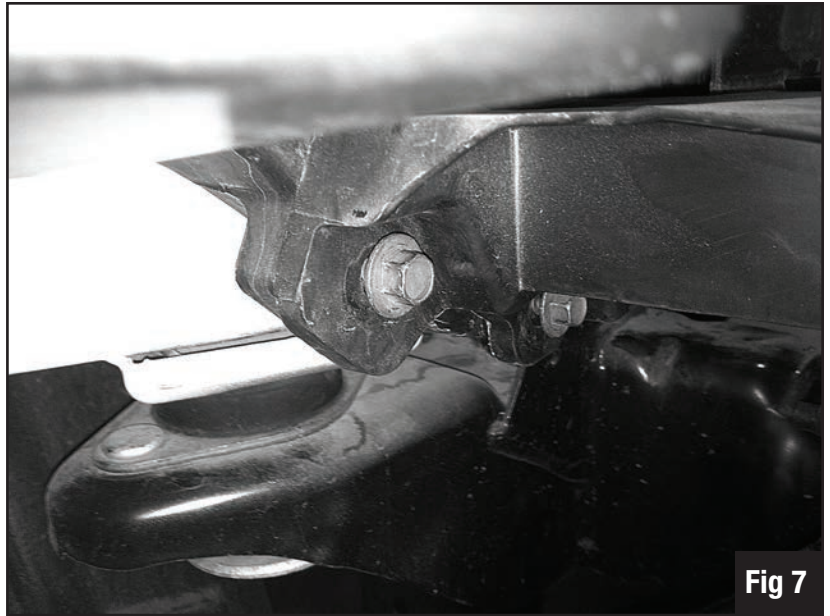


Fig 7

6. Remove and discard the factory air dam that connects from the bumper to the frame. (8) clips hold this on. **Fig 8.**

7. Unbolt (6) bolts that attach the bumper to the frame rails. Remove and discard the bumper.

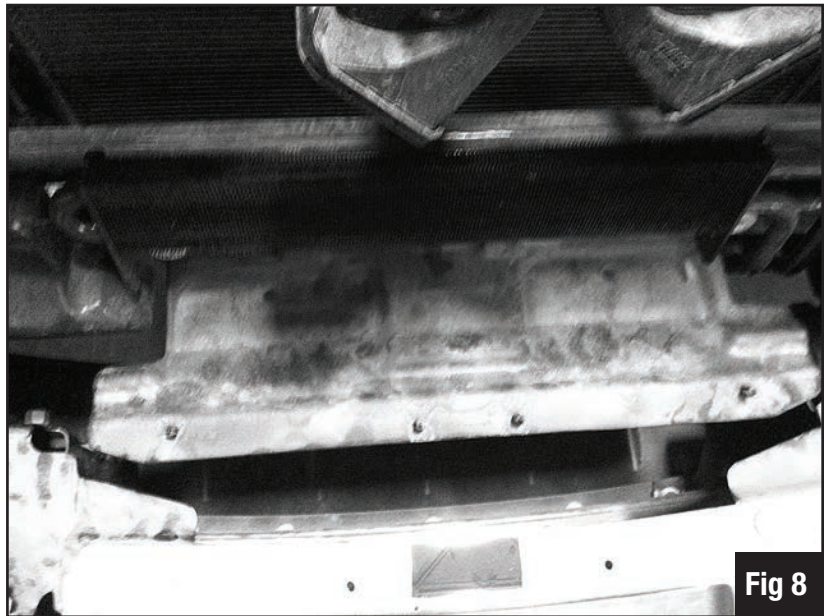


Fig 8

8. *RS series bumper reinstall - repeat steps 5-1 in reverse order. Heavy Duty bumpers reinstall the grill and radiator cover only at this time.*



Front Bumper Installation

1. Attach supplied brackets to vehicle as shown. Use (8) supplied $\frac{3}{8}$ " bolts to attach the brackets. Make sure brackets are facing correctly, as show in the figure. Hand tighten the bolts at this time. **Fig 9.**

2. Attach bumper to brackets using (6) $\frac{1}{2}$ " bolts supplied. The bumper mounts will go inside the bolt on brackets. Hand tighten the $\frac{1}{2}$ " bolts at this time.

3. Make sure to align bumper left to right and front to back before fully tightening hardware. Make sure to leave a minimum of $\frac{1}{2}$ " gap between your new bumper and any truck surfaces or edges. This will allow for twisting of the vehicle cab. Tighten all hardware now.

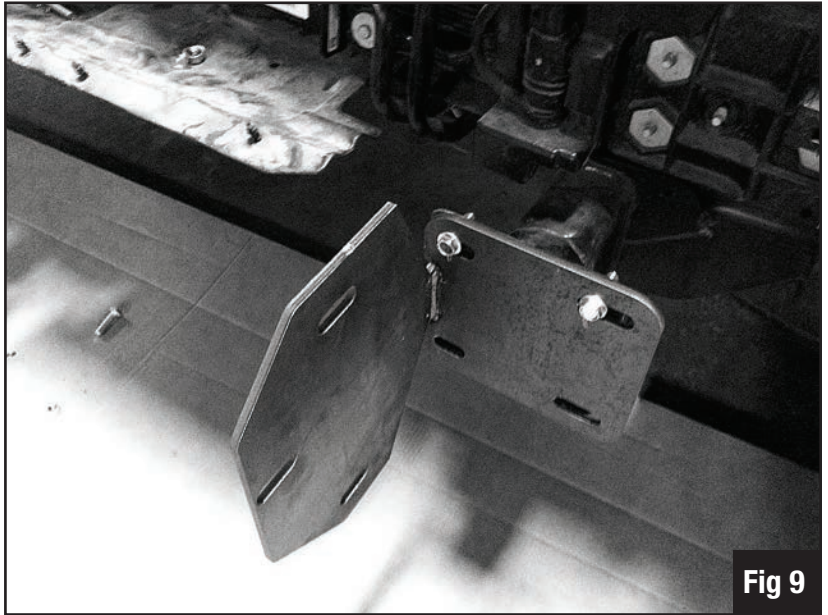
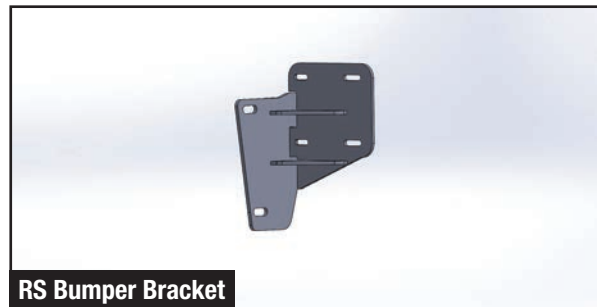


Fig 9



RS Bumper Bracket

