

# IRON CROSS AUTOMOTIVE INC.

INSTALLATION INSTRUCTIONS [FRONT WINCH BUMPER](#)

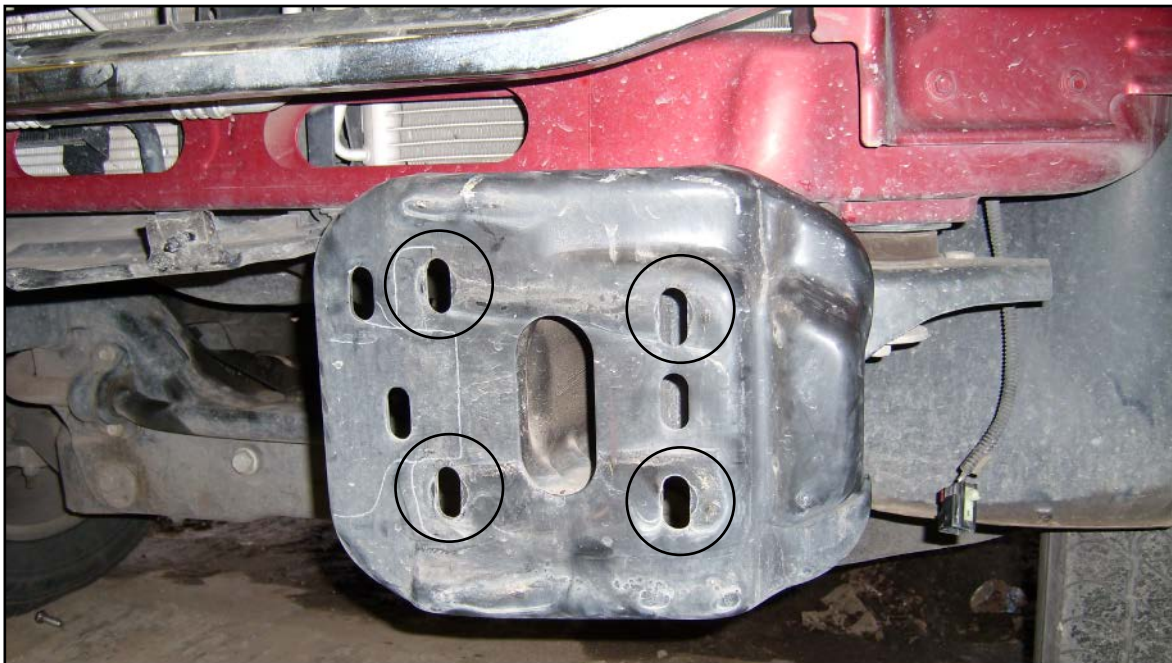
**20-615-03 / 20-615-06**  
**03-08 DODGE RAM 1500**

## PARTS LIST

28	1/2" FLAT WASHERS
14	1/2" LOCK WASHERS
14	1/2" HEX BOLTS
14	1/2" HEX NUTS
1	DRIVER SIDE BRACKET
1	PASSENGER SIDE BRACKET

### BUMPER REMOVAL

1. Use jack stands or a person to assist with bumper removal and installation.
2. Remove (4) bolts and nuts connecting factory bumper to frame.

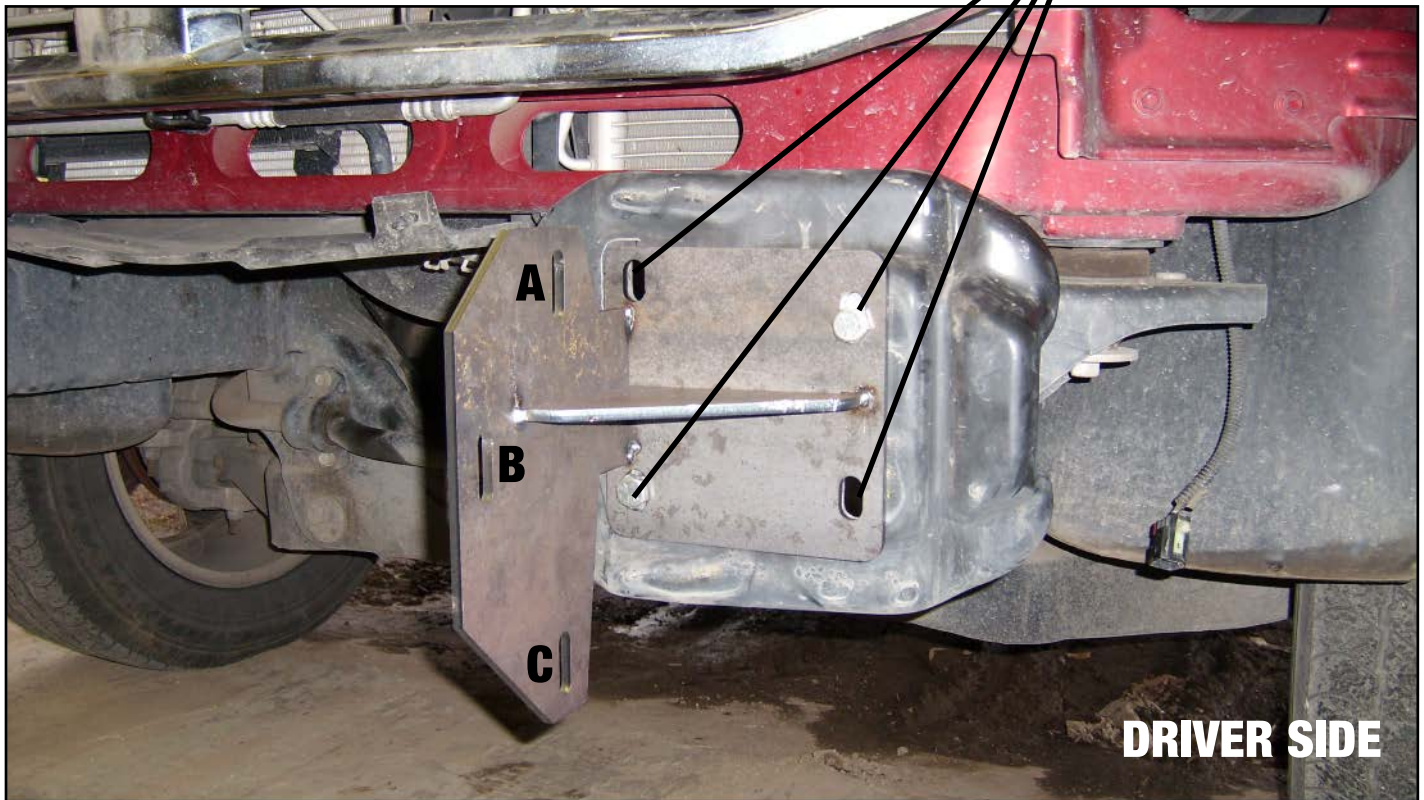


THIS PRODUCT IS FOR OFFROAD USE ONLY. ALL LIABILITY FOR INSTALLATION AND USE RESTS WITH THE OWNER.  
CARELESS INSTALLATION AND OPERATION CAN RESULT IN SERIOUS INJURY OR EQUIPMENT DAMAGE.

## BRACKET INSTALLATION

1. Install driver and passenger side brackets with 1/2" hardware.
2. Tighten loosely for final adjustment.

1/2" hex bolt  
1/2" flat washers (x2)  
1/2" lock washer  
1/2" hex nut



## BUMPER INSTALLATION

A. CAREFULLY ALIGN BUMPER MOUNT TOWERS WITH INTERMEDIATE MOUNTS AND SLIDE BUMPER INTO PLACE. INSTALL THE SUPPLIED 1/2" MOUNTING BOLTS BUT DO NOT TIGHTEN FULLY. IT MAY BE HELPFUL TO SUPPORT BUMPER WITH A FLOOR JACKS DURING INSTALL. REPEAT FOR OTHER SIDE. THIS WILL AT MINIMUM REQUIRE TWO PEOPLE TO HOLD THE BUMPER AND A THIRD PERSON TO INSTALL THE SUPPLIED HARDWARE.

B. ADJUST THE BUMPER TO ACHIEVE GOOD VISUAL ALIGNMENT AS FOLLOWS:

1. ADJUST "CASTOR" WITH MOUNTING BRACKET BOLTS.
  2. ADJUST IN/OUT, UP/DOWN, AND LEFT/RIGHT WITH THE INTERMEDIATE MOUNT BOLTS.
- ALLOW 0.5" GAP FROM ALL PAINTED SURFACES FOR FRAME FLEX.

C. TIGHTEN ALL FASTENERS, BEGINNING WITH FRAME MOUNTS. NEXT, TIGHTEN BUMPER FASTENERS.

1/2" hex bolt  
1/2" flat washers (x2)  
1/2" lock washer  
1/2" hex nut

