

IRON CROSS AUTOMOTIVE INC.

INSTALLATION INSTRUCTIONS FRONT WINCH BUMPER

20-525-07
07-10 CHEVROLET 2500/3500



PARTS LIST

16	1/2" FLAT WASHERS
8	1/2" LOCK WASHERS
8	1/2" HEX BOLTS
8	1/2" HEX NUTS
1	DRIVER SIDE BRACKET
1	PASSENGER SIDE BRACKET
1	FRONT BUMPER

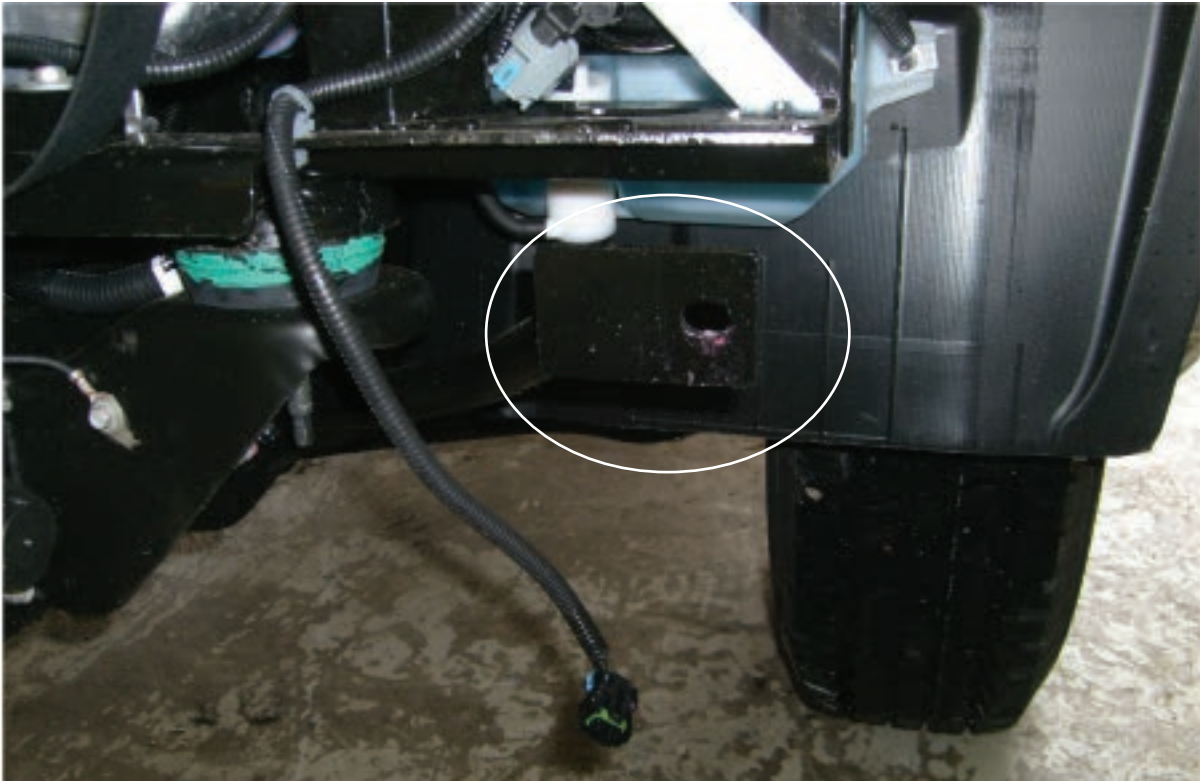
THIS PRODUCT IS FOR OFFROAD USE ONLY. ALL LIABILITY FOR INSTALLATION AND USE RESTS WITH THE OWNER.

CARELESS INSTALLATION AND OPERATION CAN RESULT IN SERIOUS INJURY OR EQUIPMENT DAMAGE.

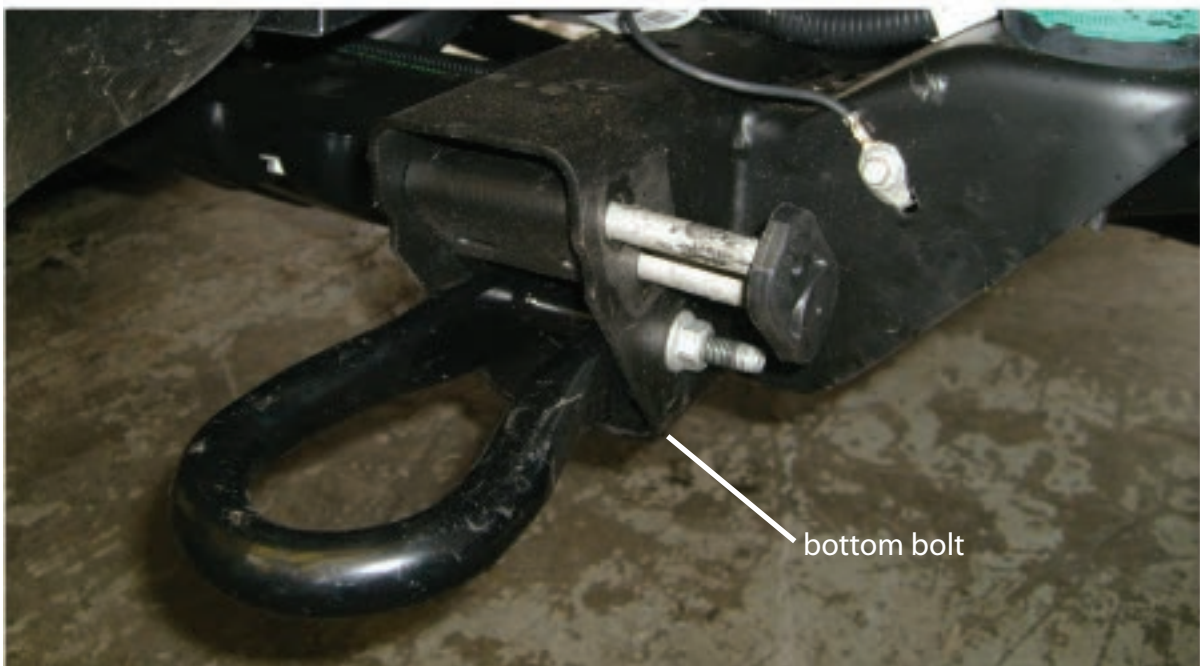
BUMPER REMOVAL

A. Disconnect the factory fog lamp connectors (If Applicable). Zip tie harness to frame.

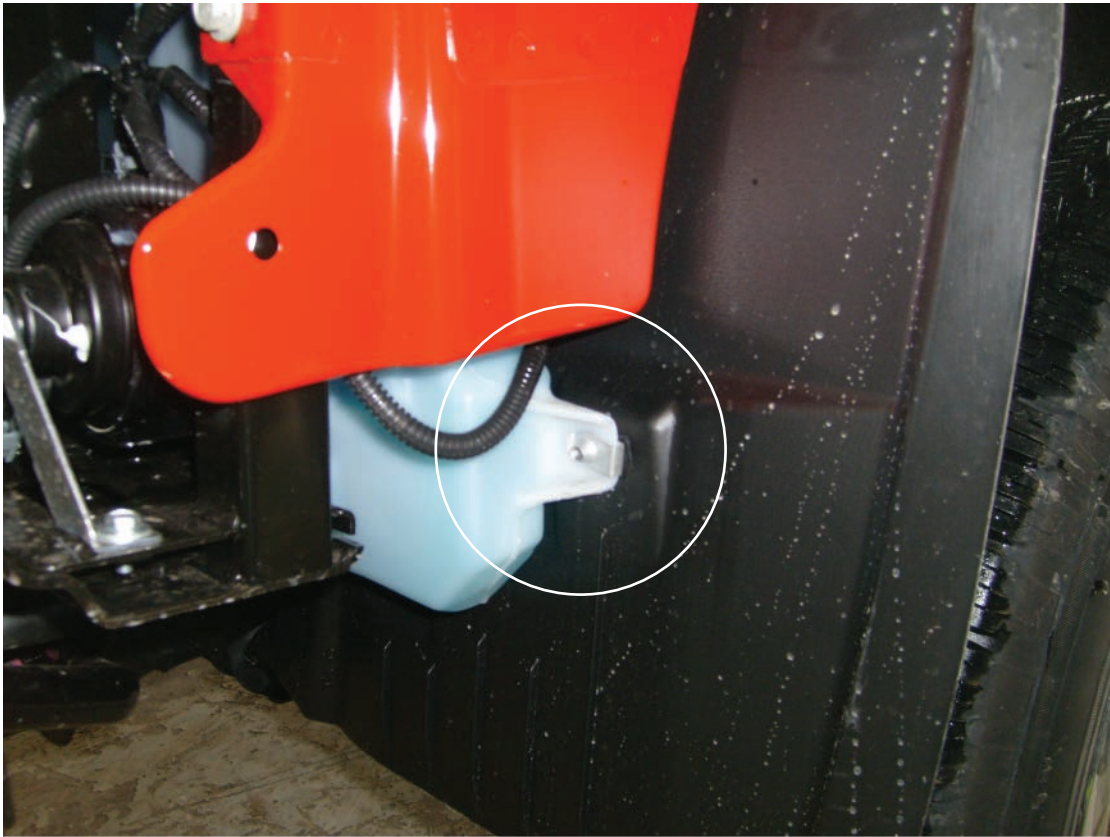
B. Remove bolts and swing outer bumper support tubes down and out of the way, using a 15mm socket. See Image Below.



C. Remove 21mm nuts(2 Per Side) FASTENING TOW HOOK , 1 on bottom and U-BOLT from the frame holding the bumper brackets to the frame. SUPPORT BUMPER BEFORE REMOVING BOLTS.



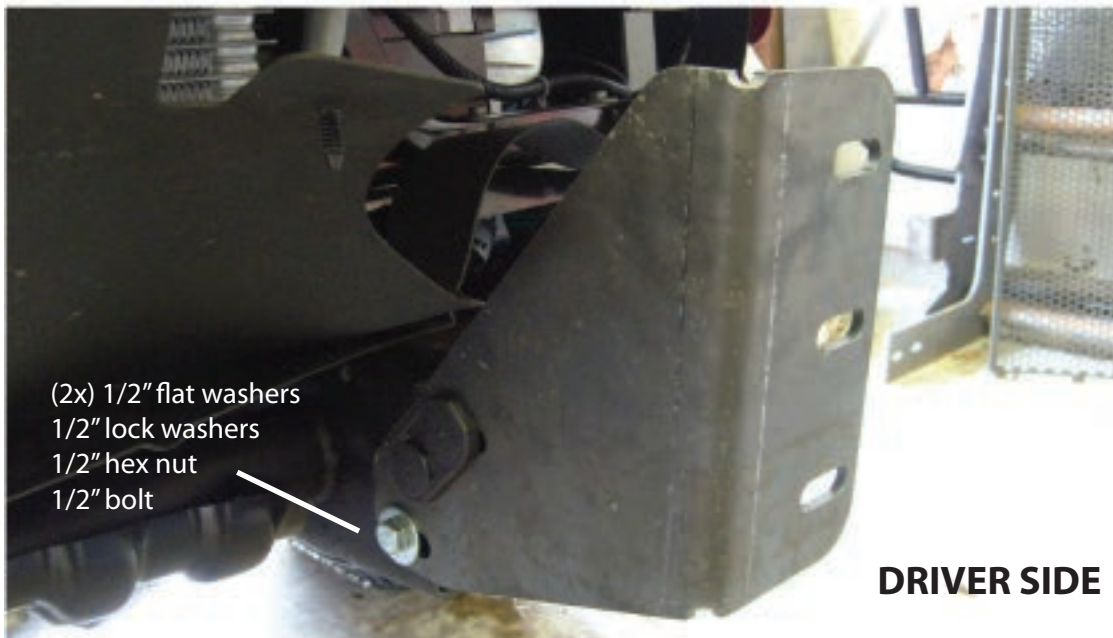
D. Remove bolt from inner wheel well splash guard to allow plastic to fit into new bumper.



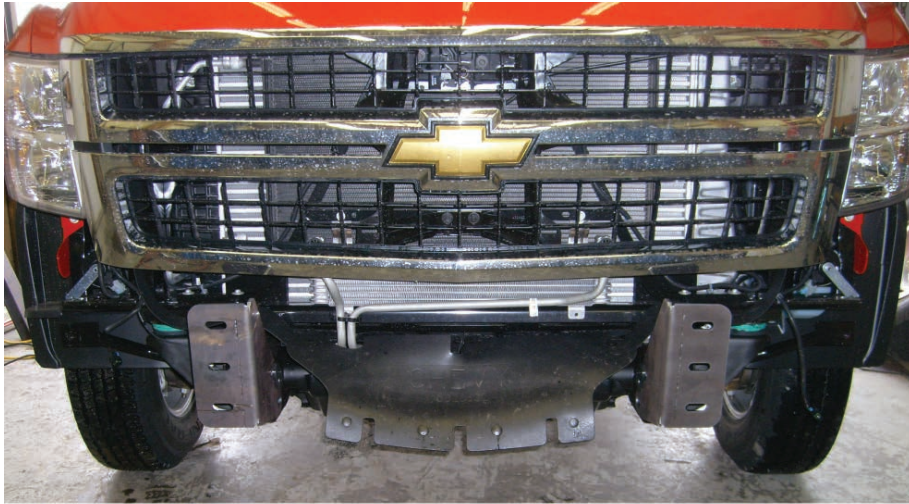
E. Pull outward slightly at the fender wells and remove the bumper from the front.

BRACKET INSTALL

A. Install bracket to inside of frame. Bolt bracket using factory U-Bolt w/ hardware and supplied 1/2" hardware to bottom hole.



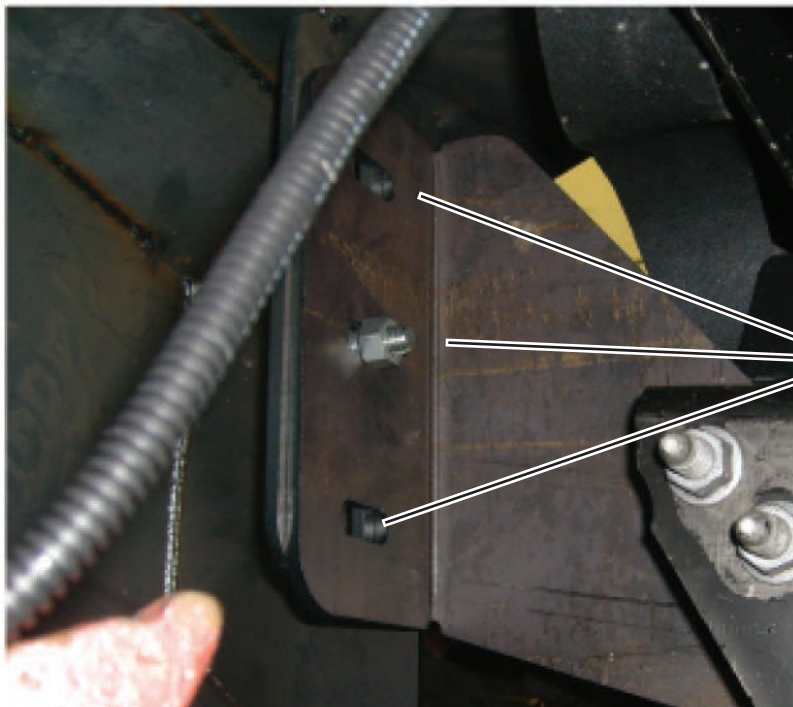
PROPER BRACKET INSTALLATION



On some models, you may need to remove the rubber trim from the top of the bumper that goes underneath the headlights. Trim rubber to length to fit the Iron Cross bumper properly.



BUMPER TO BRACKET INSTALL



B. Carefully align bumper mount towers with intermediate mounts and slide bumper into place. Install 1/2" mounting bolts but do not tighten fully. It may be helpful to support bumper with a floor jack(s) during install. Repeat for other side.

(2x) 1/2" flat washers
1/2" lock washers
1/2" hex nut
1/2" bolt

C. Adjust the bumper to achieve good visual alignment as follows:

- 1. Adjust "castor" with mounting bracket bolts.**
- 2. Adjust in/out and up/down with the intermediate mount bolts.**

D. Tighten all fasteners, beginning with frame mounts. Next, tighten all mount-to-bumper fasteners.

