

# IRON CROSS AUTOMOTIVE INC.

## INSTALLATION INSTRUCTIONS FRONT WINCH BUMPER

**20/22/24-315-03**

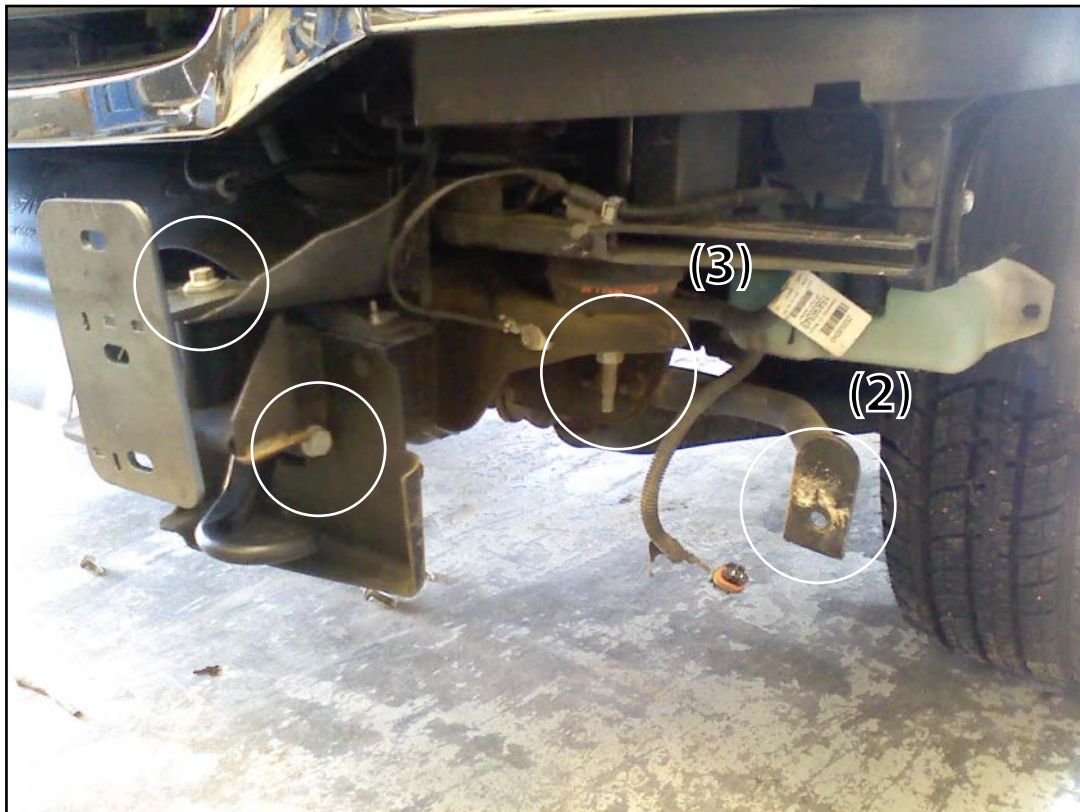
**03-06 GMC 1500**

**20/22/24-515-03**

**03-06 CHEVY 1500**

### PARTS LIST

8	1/2" HEX BOLT	1	DRIVER SIDE BRACKET
8	1/2" HEX NUT	1	PASSENGER SIDE BRACKET
16	1/2" FLAT WASHER	1	FRONT BUMPER
8	1/2" LOCK WASHER		

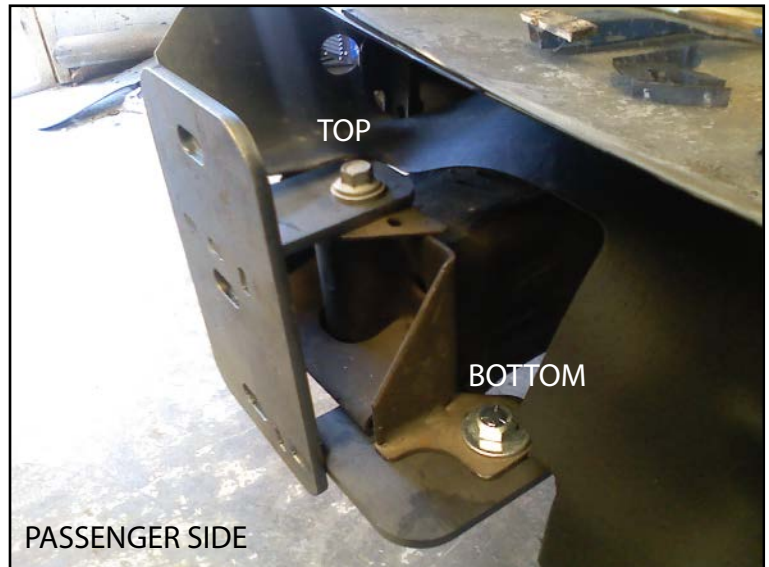


#### BUMPER REMOVAL

1. Unplug fog light sockets.
2. Remove bolts connecting bumper to arm (2).
3. Remove arm from frame (3).
4. Remove the (2) bolts from bumper mounts connecting to frame. There is a top bolt and lower bolt.
5. Remove tow hook. Tow hook will be useless once bumper is installed.

## BRACKET INSTALL

1. Use factory bolt for top bracket mount and supplied 1/2" hex bolt, (2x) 1/2" flat washers, lock washer, and hex nut for the bottom bracket mount location.



## BUMPER INSTALL

1. Install bumper to brackets. Use jack stands or a person to help hold bumper to brackets. Insert 1/2" hardware and loosely tighten to allow for adjustment.
2. Install 1/2" hex bolt, (2x) 1/2" flat washers, 1/2" lock washer, and 1/2" hex nut into holes A, B, & C through bumper and bumper brackets.



ALIGN THE BUMPER SIDE TO SIDE AND TOP TO BOTTOM TO ENSURE A PERFECT FIT TO THE TRUCK. ALLOW FOR A 0.25" CLEARANCE TO ALL PAINTED SURFACES IF POSSIBLE TO ALLOW FOR FRAME FLEX.

TIGHTEN ALL HARDWARE FOR FINAL INSTALLATION.

