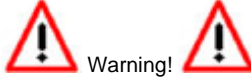




## PSN-1

### User Manual

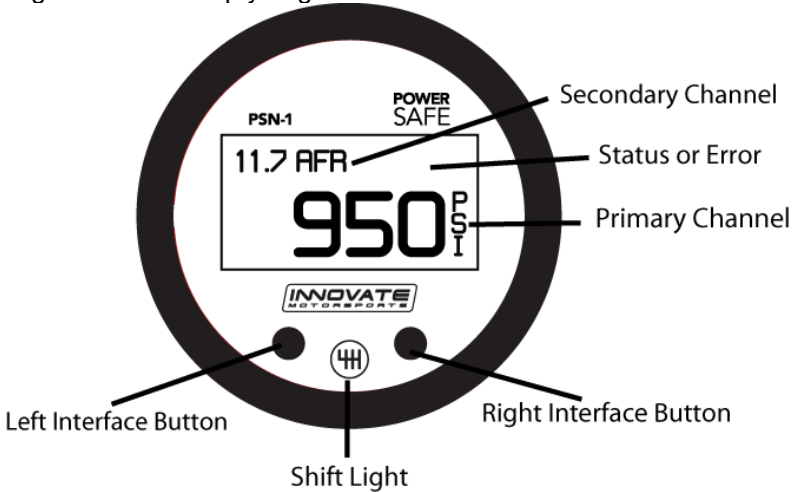


Warning!

The Oxygen Sensor used in this device gets very hot in operation. Do not touch a hot sensor. Do not let a hot sensor touch a combustible surface. Do not use the sensor with or near flammable liquids or gases. Failure to heed these warnings may result in severe burns, explosions, fires, or other dangerous events.

# 1. PSN-1

The PSN-1 is an all-in-one, PowerSafe override, wideband air/fuel ratio and Nitrous Bottle Pressure gauge with RPM window switch. Using the PowerSafe functions, the PSN-1 can cut nitrous operation by using Air/Fuel ratio and/or bottle pressure references. Although it can function as a standalone unit, it has digital I/O for integration with other Innovate Motorsports MTS compatible products and one configurable analog output for integration with aftermarket ECU's and 3<sup>rd</sup> party data loggers. The following section will help you get familiar with the PSN-1.



## 1. Channel Displays

- The PSN-1 has four different display modes that can be cycled through on the main screen with the left and right interface buttons. It can be configured to display A/F or bottle pressure as primary channels or both A/F and bottle pressure in both the primary and secondary channel viewports.

## 2. Status or Error display

- The upper right hand viewport of the PSN-1 is reserved to display the PowerSafe status or any error codes that might be present.
- O2 error codes will supersede all other statuses.
- In an O2 error state, all PowerSafe functions are automatically disabled.

## 3. Interface Buttons

- Pressing either the left or right interface buttons will allow you to cycle through the 4 different display modes.
- From the main screen, pressing and HOLDING the left interface button will put the gauge in setup mode. While in setup mode, pressing and HOLDING both interface buttons together will move

you back to the main screen. The gauge will also revert back to the main screen if there have been no button presses for 15 seconds.

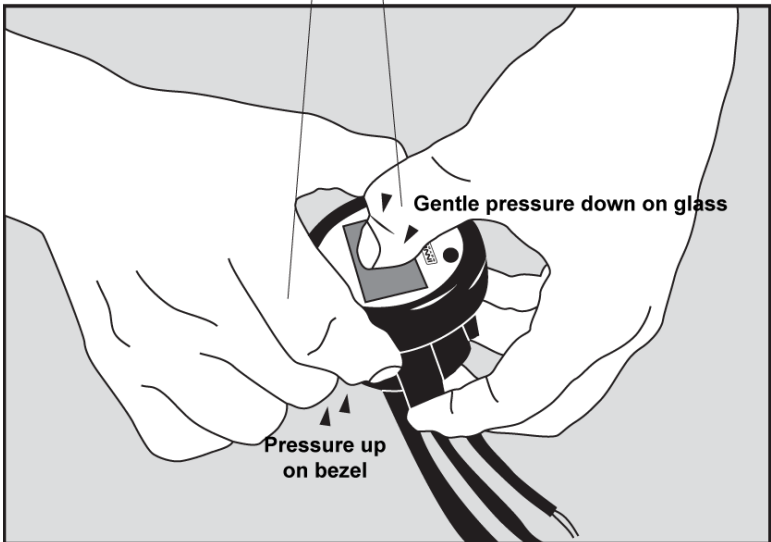
- From the main screen, pressing and HOLDING both the left and right interface buttons will disable/enable Valet mode. If there are no other error codes on the status viewport of the screen, the PSN-1 will display "Valet".

#### 4. Shift Light

- Illuminates when the trigger shift RPM is reached.

### 1.1 Changing the PSN-1's gauge face and/or bezel

1. Lay the PSN-1 face down and remove the three #2 phillips screws from the outside rim of the back plate.
2. **Pull the bezel (black ring) upwards to remove.** **Thumb must be pressing down on the glass**

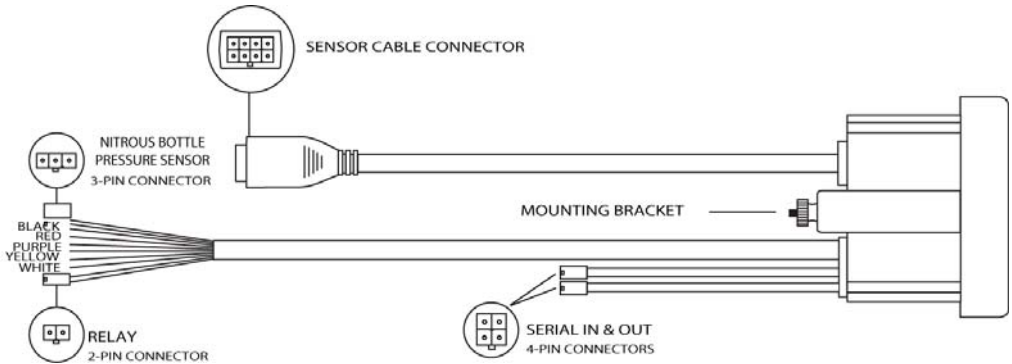


\* When disassembling, be careful not to lose the clear plastic light pipe from the shift light opening as it can fall out.

\*\* Pulling the bezel upwards while NOT holding the glass down can potentially damage the gauge.

3. Configure the gauge as desired by changing the gauge face and/or bezel.
4. Make sure every piece is positioned correctly using the locating tab and reassemble the gauge.
5. Reinstall the three #2 phillips screws verifying that the buttons are not binding on the gauge lens.

## 2 Installation



### 2.1 Wiring

The PSN-1 has 5 stripped wire leads:

- 1 Connect the **RED** wire to an isolated switched 12V source in your vehicle. A switched 12V source goes ON as soon as “key on” power is active. The circuit to which you will pull power from should be able to support a 3 amp draw. Make sure this connection is protected with a 5A fuse (not supplied.)



Circuits that share power with the vehicle’s stereo, ignition system, ECU, lighting, or fuel pump should not be used. When in doubt, create an additional circuit using an automotive relay available at any automotive parts supplier. See the next section for a relay installation diagram.

- 2 The **BLACK** wire should be grounded to a solid ground source. The best possible ground source would be the battery ground (-) post.



If other Innovate Motorsports devices are going to be daisy-chained along with the PSN-1, it is recommended that all devices be connected to a single ground point, ideally the battery ground (-) post.

- 3 Connect the **WHITE** wire to a headlight power wire (a wire that goes hot with 12V when the headlights are on). This enables the display to dim for better nighttime viewing. **DO NOT CONNECT THIS WIRE TO THE HEADLIGHT DIMMING WIRE.** Connection to this rheostat type of switch will cause the gauge to malfunction. If you chose not to utilize the dimming feature, connect the WHITE wire to ground.
- 4 *Optionally*, the **YELLOW** analog output can be connected to the analog input of other devices such as data loggers or standalone ECUs. If this

wire is not being used isolate and tape it out of the way. The default analog output configuration is 0V = 7.35 AFR and 5V = 22.39 AFR.

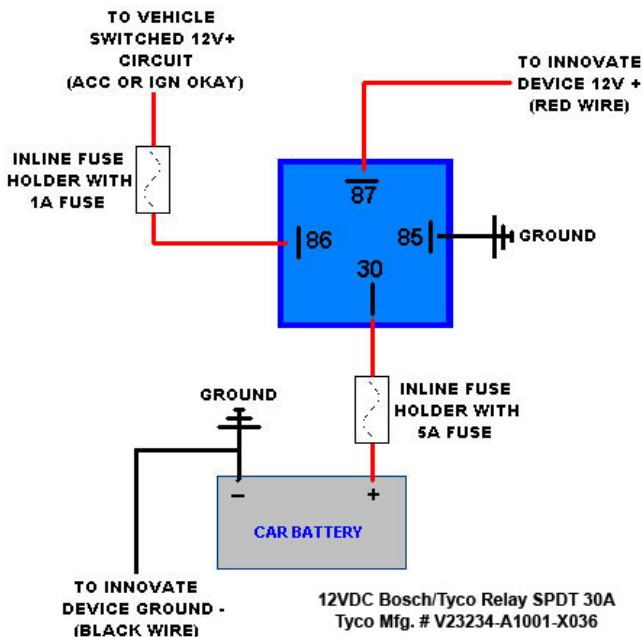
- 5 The **PURPLE** wire can be connected to a tach signal to log engine RPM, use the shift light, PowerSafe operation, and window switch. A tach signal can be acquired from the negative lead of a coil, ECU, negative lead of an injector, or directly from the ignition box if running a multi-spark (i.e. MSD 6AL).

**Note:** A tach signal can not be acquired from the negative lead of the coil on vehicles running CDI ignitions. For these applications use the negative lead of an injector or a tach adapter (if available for your model ignition).

### 2.1.1 Single Innovate Device Relay Wiring Instructions



The relay diagram below is intended for use to power the gauge, it is not for the PowerSafe relay's operation.



### 2.2 Gauge Mounting and Routing

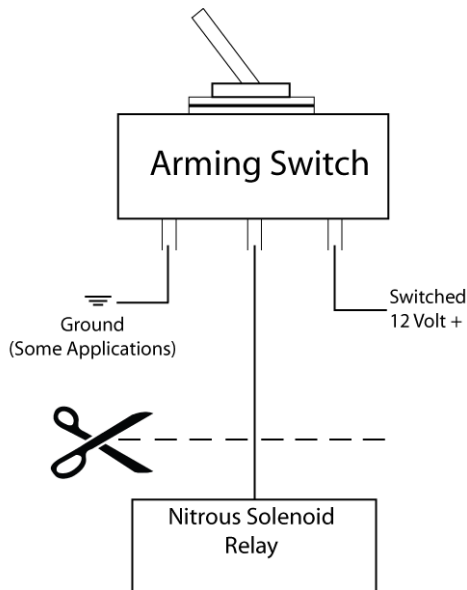
The PSN-1 gauge fits in any standard 2 1/16" (52mm) gauge pod. Mounting of the gauge should be done in such a manner that the cables are not being

forcefully pulled or strained from the gauge itself. Route the sensor, relay and pressure sensor cables avoiding contact with the exhaust system and other vehicle components that could damage the cables. Also avoid routing the cables near ignition components or other sources of RF (radio frequency) and EMI (Electromagnetic interference) noise.

### 2.3 PowerSafe Relay

The PowerSafe functions by intercepting the lead that controls the relay to the nitrous solenoid(s). When the window switch function is used, the relay will be open until engine RPM is within the programmed range. Once in the programmed RPM range, the unit will display "Armed" and the relay will be closed. While the PSN-1 is "Armed," nitrous cuts will occur if either the Air/Fuel ratio and/or bottle pressure user defined thresholds are met.

1. Disconnect the battery negative (ground) lead.
2. Locate the trigger lead to the relay(s) originating from the arming switch. Find a location that has enough wire length on both ends to connect to the PowerSafe relay wires and cut the wire in half.



3. Solder and heat shrink one exposed end of the trigger lead wire to the **BLUE** relay wire. Solder and heat shrink the other exposed end of the trigger wire to the **YELLOW** relay wire. *It is not critical which side of the intercepted trigger wire connects to either of the blue or yellow relay wires.*

4. Mount the relay in a suitable location away from high temperatures or near ignition components.
5. Route the relay cable to the gauge and connect to the 2 pin connector.

## 2.4 Nitrous Bottle Pressure Sensor

1. With the bottle valve shut off, connect the supplied 1/8 -27 NPT Nitrous Pressure Sensor to the correct Nitrous Oxide Pressure monitoring port on the bottle using thread compound. Torque the sensor 2~3 turns from finger tight. Do not overtighten the sender.

**NOTE:** An adapter might be necessary to connect the 1/8 -27 NPT fitting to the nitrous bottle. These adapters are not included in the kit.

2. Route the pressure sensor cable to the gauge and connect it to the 3 pin connector.
3. Verify that there are no leaks around the new fittings. Soapy water works best.

## 2.5 Wideband Oxygen Sensor Setup

### 2.6 Sensor Placement

Optimum bung placement will vary from application to application, but using the guideline below will ensure the longest sensor life with the most accurate readings. Using a bung is the preferred method for mounting the oxygen sensor in all applications.

- Weld the bung at least **24 inches downstream** of the exhaust port outlet (after the collector), or 24 inches after the turbocharger if so equipped. The bung should be welded before the X or H pipe if so equipped.
- Using a clock as reference, mount the bung between the **9:00 o'clock and 3:00 o'clock position**. Welding the bung in the lower section of the exhaust pipe can result in sensor damage caused by condensation making contact with the sensor's internal heating element.
- A **1" bung** (provided in the kit) will best protect the sensor. When fully threaded, the sensor's tip will sit flush with the exhaust pipe, this does **not** adversely effect the readings.

- The bung should always be welded before the Catalytic Converter. Welding the bung after the catalytic converter will skew the readings toward lean. The skew in readings will vary with engine load and the efficiency of the catalytic converter.
- Leaded fuel and two stroke applications will reduce the sensor's life. There are many other factors that dictate the sensor's lifespan so it is impossible to predict it's total longevity.
- Exhaust leaks, camshaft overlap, and open (shorty) exhausts will cause false lean readings at light engine loads. Typically, once the engine is under load and the exhaust gas volume increases, you will see accurate readings.
- When installed in the exhaust, the oxygen sensor must be connected to a powered, functional MTX-L (no error codes) whenever the engine is running. An un-powered sensor will be damaged in a short period of time when exposed to exhaust gas.
- Do not pre-warm the sensor before starting the engine, simply start the engine as normal. Allowing the sensor to pre-warm before starting the engine will increase the possibility of damaging the sensor from shock-cooling.
- The maximum temperature of the sensor at the bung (the sensor mounting location) should not exceed 500 °C or 900 °F. If these temperatures are exceeded in your application you should install the Innovate Motorsports HBX-1 heat sink bung extender. (p/n 3729.)



**As the O2 sensor measures the oxygen content of the exhaust gas to provide an accurate O2 reading, even a small pin-hole leak in a poorly welded sensor bung will effect the accuracy and performance of your O2 sensor. Remember, any deviation from the instructions provided for proper sensor installation will lead to inaccurate O2 readings.**

### 2.6.1 Sensor Calibration

Once the unit has been wired and a suitable location has been found for both the gauge and the sensor it is time to perform the sensor calibration. Innovate Motorsports' 'Direct Digital' wideband measurement principal allows you to calibrate the sensor to compensate for sensor wear. This procedure takes just a few moments and it will ensure the most accurate readings throughout the oxygen sensor's life. This procedure is required anytime a NEW oxygen sensor is installed.



The calibration procedure requires that the oxygen sensor be in **free air**, this means removed from the exhaust system completely.

1. With the **sensor disconnected**, apply power to the PSN-1.

Confirm that the top right-hand corner viewport displays "O2 E2." This is an error code, indicating that no sensor is detected. Leave unit powered on for a minimum of 30 seconds.

2. **Power down** the PSN-1 and attach the oxygen sensor using the cable provided. When making these connections, make sure they are fully seated and locked. Again, make sure that the sensor is in free air (not in the exhaust).
3. **Power up** the PSN-1.

The PSN-1 will start warming up the sensor, this is indicated on top right-hand corner viewport of the display by showing "O2 HTR." After 30-60 seconds, the display will switch from "O2 HTR" and quickly flash "O2 CAL", indicating that the sensor is being calibrated.

The calibration procedure has completed and the system is now ready for use.

**Important:** You can disconnect and reconnect the sensor and sensor cable for installation without losing your calibration. However, if you power up the PSN-1 without a sensor connected, **your calibration will be reset** (see step #1 above).

## 2.6.2 Calibration Schedule

### Normally aspirated (daily driver)

- Calibrate before installation of new sensor
- Calibrate new sensor again after 3 month of use
- Thereafter calibrate once a year or every 20,000 miles, whichever comes first

### Turbo Application, daily driver (tuned rich)

- Calibrate before installation of new sensor
- Calibrate new sensor again after 3 month of use
- Thereafter calibrate twice a year or every 10,000 miles, whichever comes first

### Race Application

- Calibrate before first installation of new sensor
- Calibrate once per race weekend

## 3 PSN-1 Setup

### 3.1 Entering Setup Configuration

The PSN-1 can be configured directly from the gauge itself or by connecting it to a computer with the LM Programmer software.

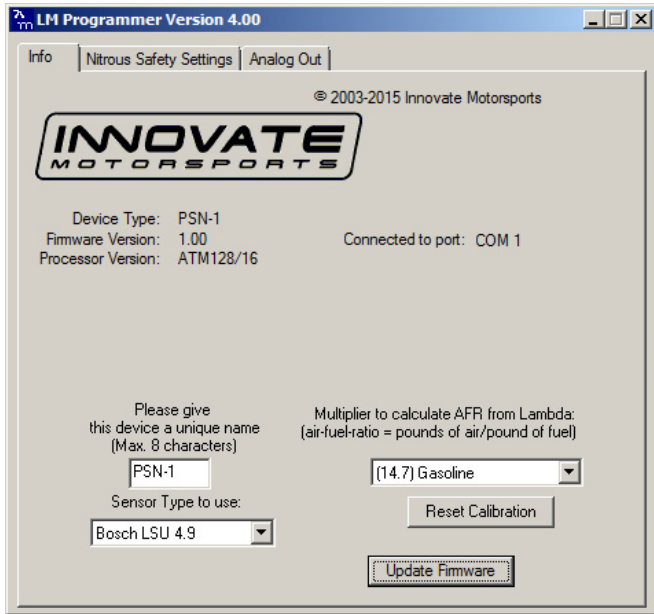
#### 3.1.1 Configuration using PSN-1's interface buttons

1. From the main screen, press and HOLD the left interface button to put the gauge in setup mode
2. Pressing either the left or right interface buttons will allow you to cycle through the 10 different setup parameters in the menu.
3. Once the desired setup parameter is displayed, press and HOLD the left interface button to make a change. Once the parameter's configuration has been entered it will start flashing.
4. Make changes by using the left or right interface buttons.
5. Once in setup mode, pressing and HOLDING both interface buttons together will move you to the main screen. The gauge will revert back to the main screen if no there have been no button presses for 15 seconds.

#### 3.1.2 Configuration using the LM Programmer software

Refer to chapter 4, Logworks 3 & LM Programmer Software Package to gain access to the software.

1. Connect the OUT port of the PSN-1 to the provided serial programming cable. Connect the other end of the serial programming cable to your computer. If your computer does not have a serial port, you can purchase a USB to Serial adapter from Innovate Motorsports (P/N 3733) or use any USB to serial adaptor that includes drivers. Make sure that nothing is connected to the IN port of the PSN-1
2. Power up the PSN-1.
3. Launch **LM Programmer**. The LM Programmer application can be launched from *Start->Programs->LogWorks3->LM Programmer* from the Windows task bar.



Once you have completed your desired changes, press the **Program** button on the lower right on the software application. You will know that the PSN-1 has been programmed successfully when the **Program** button grays out.

### 3.2 Display Settings (Gauge Abbreviations)

1. **Pressure Units** - Allows the gauge to display bottle pressure in either PSI or BAR. Default setting is PSI
2. **Wideband O2 Units (WB O2 Units)** – Allows the gauge to display O2 units in either AFR or Lambda. Default setting is AFR.
3. **Enable Wideband O2 (WB O2 State)** – Allows the wideband to be disabled or enabled. Also indicates the sensor type used (sensor type can only be changed by connecting the PSN-1 to LM Programmer.) Default setting is O2 enabled.

**NOTE:** If the wideband is disabled, the O2 sensor should be removed from the exhaust to avoid damaging it.

4. **Fuel Type** – Change to different fuel types when PSN-1 is setup to display in AFR. Default setting is Gasoline.

### 3.3 RPM Settings (Gauge Abbreviations)

1. **Mode (RPM Mode)** - Select how many pulses per rotation (ppr) based on your tach signal source. When setting the Mode using the gauge interface, you will also see a real-time display of the RPM to ease the setup. Default is 1 pulse per rotation.
2. **Scale (RPM Scale)** – Select either 10230 or 20460 RPM scales. Default is 10230
3. **Shift RPM** – Set to desired RPM to trigger illumination of the shift light on the PSN-1. Default is 10230 RPM.

### 3.4 Nitrous Safety Settings (Gauge Abbreviations)



**In an O2 error state, all relay functions are automatically disabled.**

1. **Window Switch Min and Max RPM (Window Min and Max)** – This is the engine RPM range where the PSN-1 will arm the system. When the system is within the defined RPM window, “Armed” will be displayed on the upper right hand corner viewport. To disable this function set the Min RPM range to 0 RPM and maximum to 10230 RPM. Default setting is Min RPM 2000 and Max RPM 4000.
2. **Boost Cut by Bottle Pressure (Pressure Min)** - This is a safety trigger to cut nitrous at a desired minimum bottle pressure. When the safety Bottle Pressure is triggered, the PSN-1 will display “P Cut” on the upper right hand corner viewport and the relay will interrupt all nitrous functions. Default setting is 950 PSI.
3. **Nitrous Cut by AFR** – This is a safety trigger to interrupt nitrous function by a defined AFR. There are two setup parameters to trigger this safety cut: **Min RPM (AFR RPM Min)** and **AFR Cut. Min RPM (AFR RPM Min)** is the minimum engine RPM where the safety cut will become active. **AFR Cut** is the defined lean A/F that will trigger the safety cut. When the Nitrous Cut by AFR is triggered, the PSN-1 will display “O2 Cut” on the upper right hand corner and the relay will interrupt all Nitrous function. Default setting is 2000 RPM at 13 AFR.
4. **Valet ON/OFF** – When configured from the gauge, this setting is accessed from the main screen. Press and HOLD both the left and right interface buttons at the same time, this will disable/enable the Valet function. When Valet mode is active, the relay will interrupt all solenoid control and nitrous activation will not be possible. If there are no other error codes on the status viewport of the screen, the PSN-1 will display “Valet” when active. In LM Programmer, use the ‘Valet Mode OFF’

checkbox to turn the solenoid control ON/OFF. Default setting is Valet mode OFF.

## 4 Logworks 3 & LM Programmer Software Package

The PSN-1 can be connected directly to your Windows computer to log and analyze data with the Logworks software or to configure with LM Programmer. The software is a free download on the Innovate Motorsports' support section of the website.

### 4.1 LM Programmer

LM Programmer is used to configure settings on your PSN-1.

1. Connect the OUT port of the PSN-1 to the provided serial programming cable. Connect the other end of the serial programming cable to your computer. If your computer does not have a serial port, you can purchase a USB to Serial adapter from Innovate Motorsports (P/N 3733) or use any USB to serial adaptor that includes drivers. Make sure that nothing is connected to the IN port of the PSN-1
2. Power up the PSN-1.
3. Launch LM Programmer. The LM Programmer application can be launched from *Start->Programs->LogWorks3->LM Programmer* from the Windows task bar.

#### 4.1.1 Programming Analog Output

Connect the PSN-1 to the computer and launch LM Programmer. Select the Analog Output tab. The analog output configuration screen shows voltage versus Lambda for the analog output. The graph display is automatically scaled to the selected voltages values. The configuration screen allows the user to specify a minimum and maximum lambda or A/F value to a corresponding voltage range.

By selecting the 'use Air-Fuel-Ratio' button you can change the displayed unit of measure for mixture by AFR instead of Lambda. This does not change the programming, only the unit of measure displayed in the configuration screen.

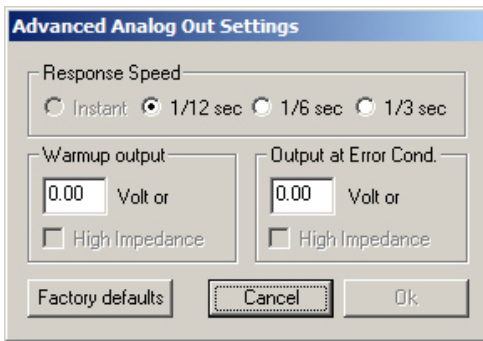
Click the 'Program' button to upload your modified A/F or lambda scaling data into the PSN-1. Once the unit has been programmed, the 'Program' button will grey out.

### Factory Programmed Default:

The analog output by default is programmed to output between 0V at 7.35 AFR to 5.0V at 22.39 AFR.

## 4.1.2 Advanced Analog Output Programming

The 'Advanced' button allows the user to set the analog out update speed and the voltage output during sensor Warm-up and error conditions. The factory defaults of the analog outputs update 1/12 of a second. The default voltage output is set at 0 volts for both the Warm-up and error conditions.



When setting the PSN-1 to the slower response speed settings, the measured mixture data will be averaged over the response time setting before being sent via the analog output.

## 4.1.3 Updating the Firmware



**Do not update the firmware if the versions are the same. A firmware update should only be necessary if there has been a new release that specifically fixes a problem that you are experiencing with the controller.**

1. Connect the PSN-1 to the computer and launch LM Programmer.

2. Once connected, LM Programmer will display the current version of the firmware that is installed in the PSN-1. **Do not flash the firmware if the versions are the same.**
3. On the 'Info' tab of LM Programmer you will see a button labeled "Update Firmware," click this button.
4. Select the firmware file with the dld extension. If there have been revisions to the firmware, you will find them available for download from the Support section of the Innovate Motorsports web site.
5. The software will now prompt you to confirm that you wish to overwrite the firmware currently on your PSN-1.
6. Click OK, the gauge of the PSN-1 will go blank. DO NOT power off or disconnect the PSN-1 from the computer until the firmware progress screen completely disappears. Once finished, you may disconnect the unit from the computer and exit out of the software.

#### 4.1.4 Changing Sensor Type



The *PSN-1* is multi sensor compatible with the Bosch LSU 4.2 and 4.9 sensors. In order to go from one sensor type to another the *PSN-1* must be connected to the LM Programmer software and the appropriate sensor type must be selected. The "Sensor Type to use" setting can be found in the 'Info' tab when LM Programmer connects to the *PSN-1*. Once the sensor type is changed a sensor calibration must be performed with the sensor outside of the exhaust (see Sensor Calibration chapter.)

Sensor Cable P/N	3ft	8ft	18ft
LSU 4.2	3843	3810	3828
LSU 4.9	3890	3887	3889

Sensor P/N	
LSU 4.2	3737
LSU 4.9	3888

Note: All sensor cables for the LSU 4.9 are easily identified by a '4.9' marking molded on the sensor connector side.




**Use the appropriate sensor cable for the sensor type as each sensor has a different style connector. Spliced cable can not only affect the wideband's performance but in worst cases it can damage the sensor and/or controller.**



**Selecting the wrong sensor type to the sensor being used will not only give you erroneous readings and/or errors. It can also permanently damage the sensor.**

## 4.2 Logging data from your PSN-1 with LogWorks

Logworks is an invaluable tool to help setup your PSN-1. The PSN-1 has four channels of sensor data built in for the tuning of not only your desired boost levels, but also a safe operating air fuel ratio for your engine. These channels are:

1. Wideband O2: Units in AFR or Lambda
  2. RPM
  3. Nitrous Bottle Pressure
  4. Relay State
- 
1. Connect the OUT port of the PSN-1 to the provided serial programming cable. Connect the other end of the serial programming cable to your computer. If your computer does not have a serial port, you can purchase a USB to Serial adapter from Innovate Motorsports (P/N 3733) or use any USB to serial adaptor that includes drivers. Make sure that nothing is connected to the IN port of the PSN-1. Power up the PSN-1.
  2. Launch LogWorks. The LogWorks application can be launched from *Start->Programs->LogWorks3->Logworks3* from the Windows task bar.
  3. Once LogWorks launches go to *File->Connect*. You will be prompted to connect to the serial COM port. Select the COM port the device is connected to and then click Connect.
  4. You will now see live data streaming from the PSN-1.
  5. *To start recording go to File->New Realtime Log* or, in the Toolbar, click on the  Tool.