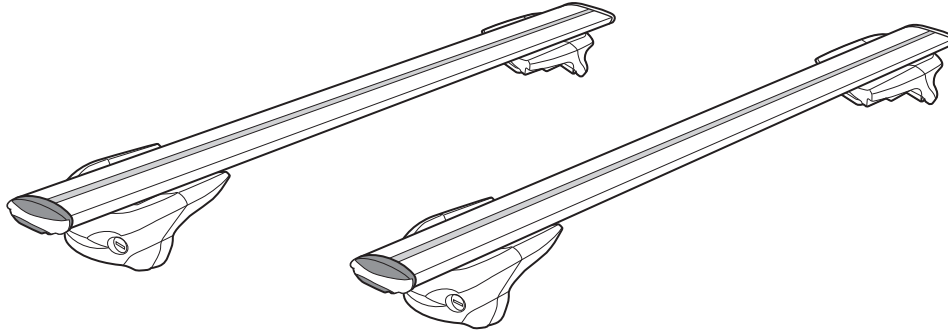




# XS350

## Installation Instructions

### XS350

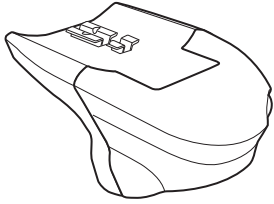


Aero Base Bar (Sold separately)

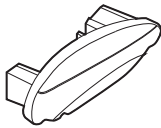
- Read the INNO common instruction manual (the accompanying sheet) as well.
- Keep this instruction manual in a safe place.
- Maximum load capacity: 75kg/165lbs. However, it varies depending on the car model.
- The maximum load capacity is 5 bicycles. However, it varies depending on the car model.  
(Drive the car at 50 mph/80km/h or less when 5 bicycles are loaded.)
- Drive the car at 50 mph/80km/h or less when the attachment is installed outside the stay.

## Product contents

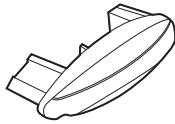
① **x4**



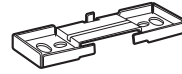
② **x2**



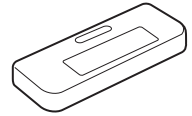
③ **x2**



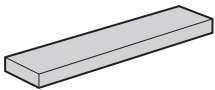
④ **x4**



⑤ **x4**



⑥ **x4**



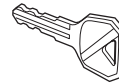
⑦ **x8**



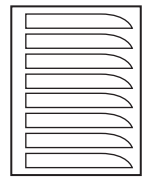
⑧ **x1**



⑨ **x2**



⑩ **x1**



⑪ **x1**



⑫ **x1**



No.	Parts
①	Aero Base Stay
②	End Garnish L
③	End Garnish R
④	Base Unit
⑤	Base Cover
⑥	Inner Block
⑦	Bolt [M6x15]
⑧	Hex Wrench [B=4]
⑨	Key
⑩	Specification Sticker
⑪	INNO Common Installation Instructions
⑫	XS350 Installation Instructions

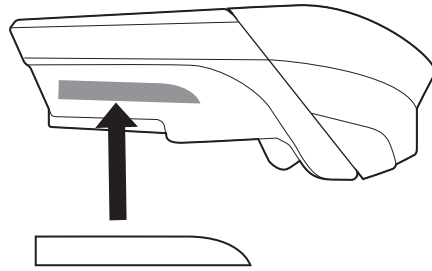
### Additional Tool Required



Scissors

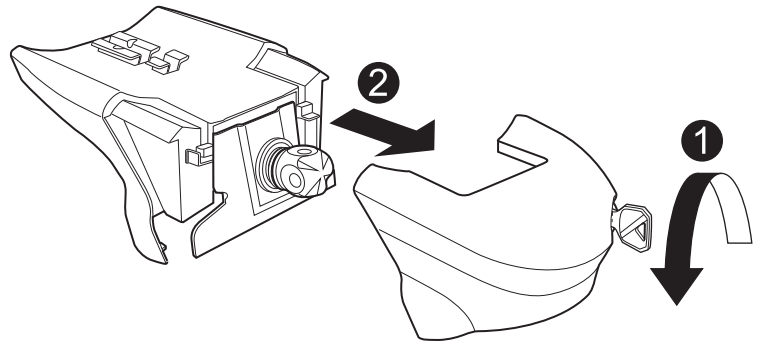
**1**

Affix the specification sticker in the relevant language on the stay.(on one of any stay)



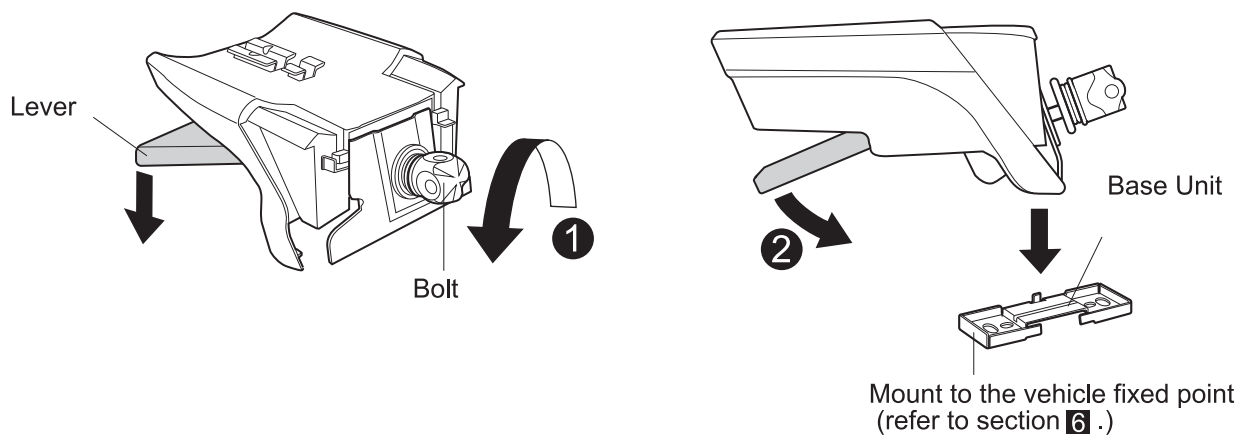
**2**

Unlock and remove the cover.



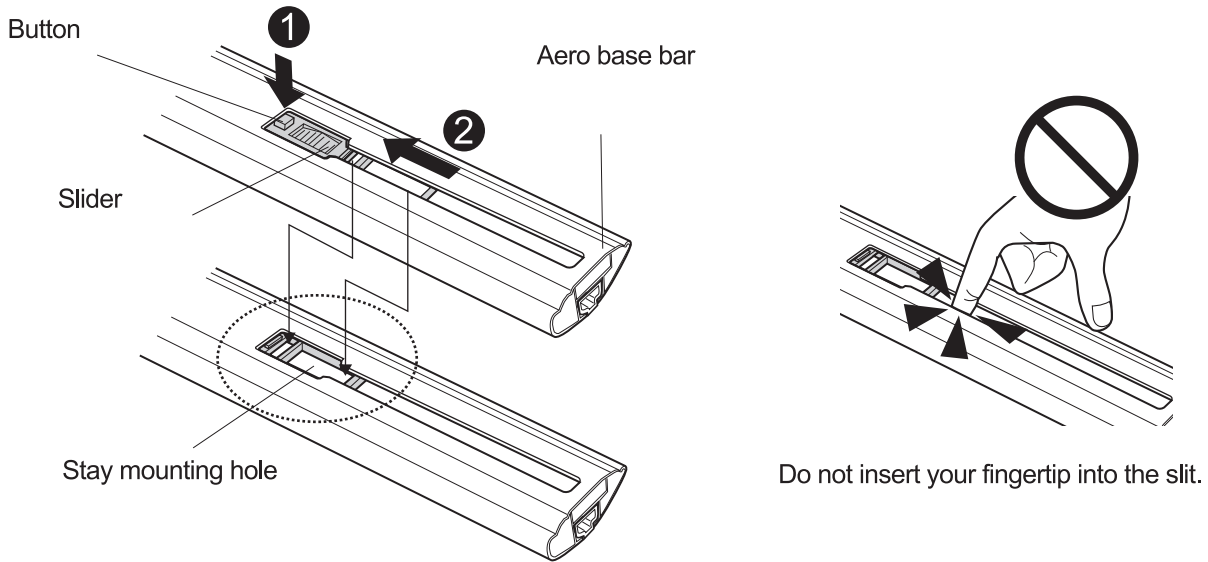
**3**

Loosen the bolt and open the lever.  
Loosen the bolt to the extent that it does not fall off the nut.



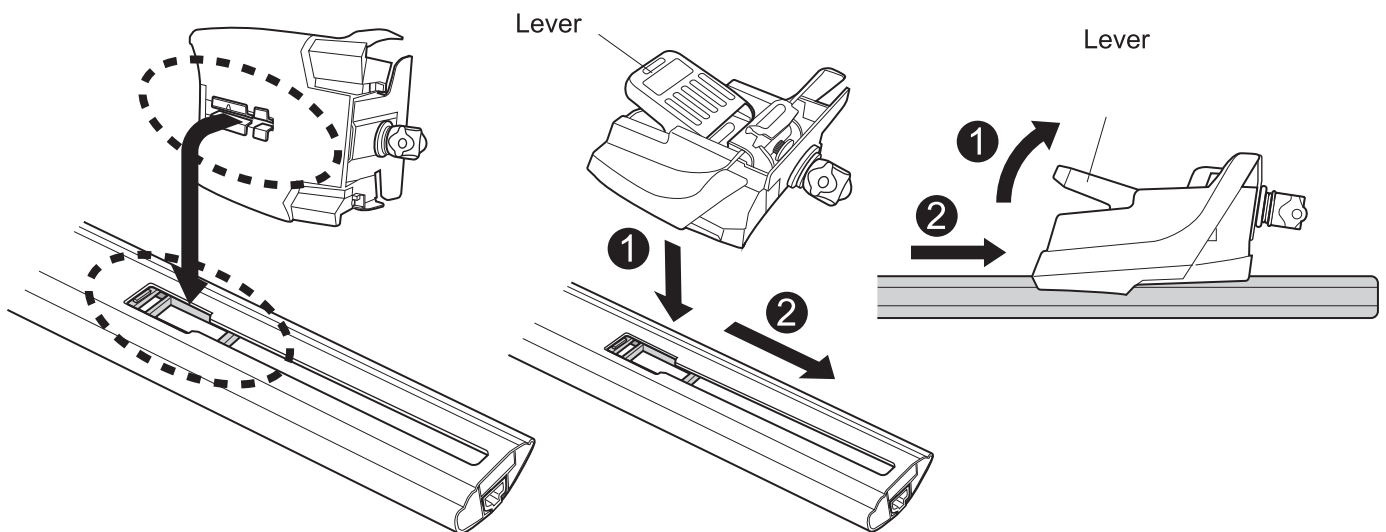
4

Press the button of the aero base bar (sold separately) and slide the slider to reveal the mounting hole for the stay.



5

With the lever completely open, insert the stay into the stay mounting hole and slide all the way to the outside. (Stay does not have a L or R.)

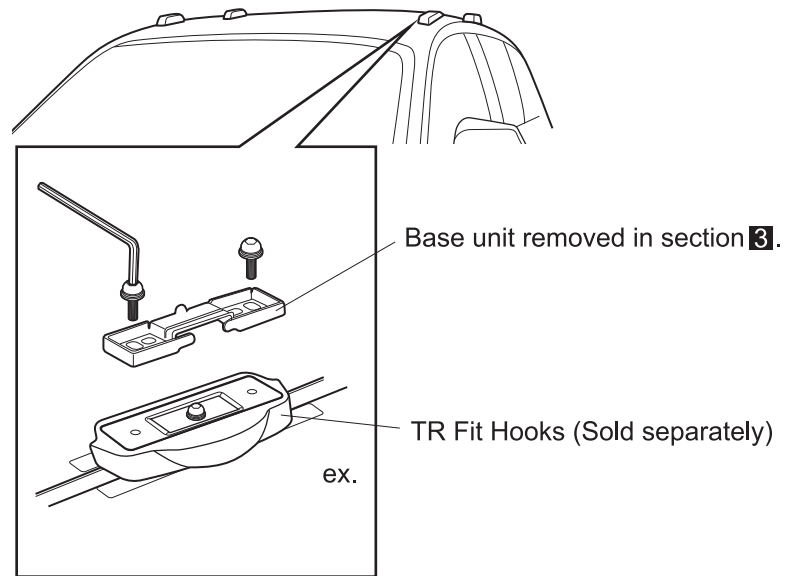


**Note** The lever can only be opened completely if the knob has been loosened to the extent that it does not fall off the nut.

**6**

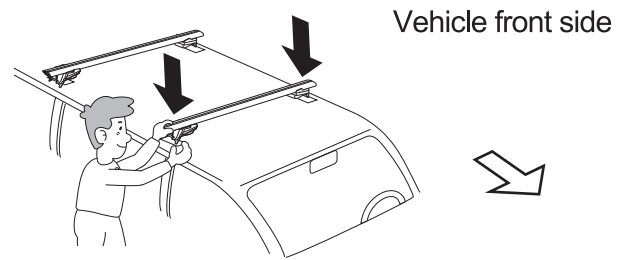
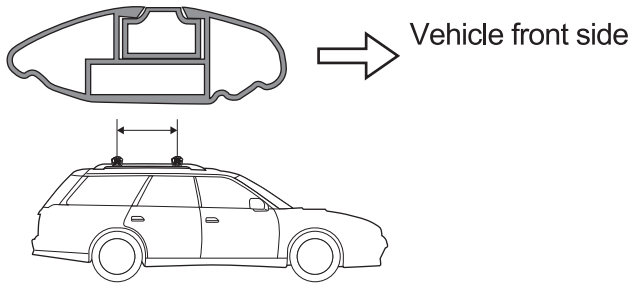
Mount the base unit.

Mount the base unit according to the vehicle-specific installation procedure listed in the TR mounting hook installation instructions.



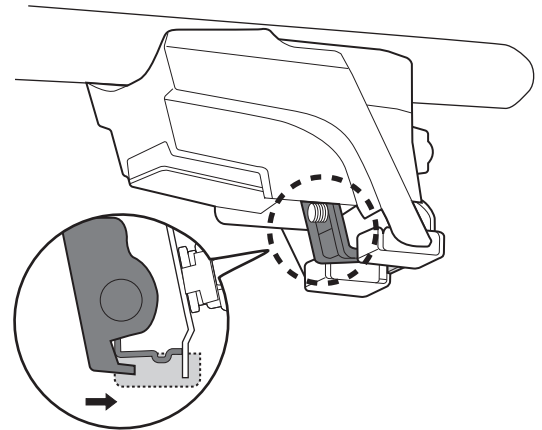
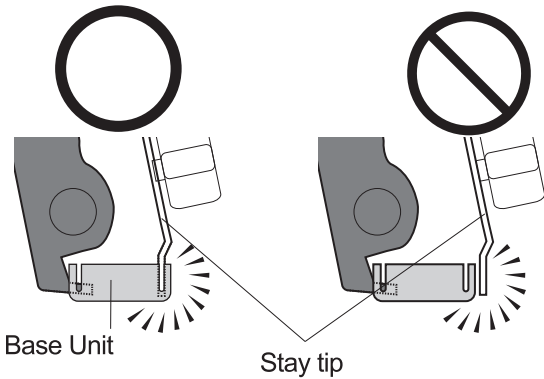
7

Confirm the direction of the bar and place the stay on the base unit.

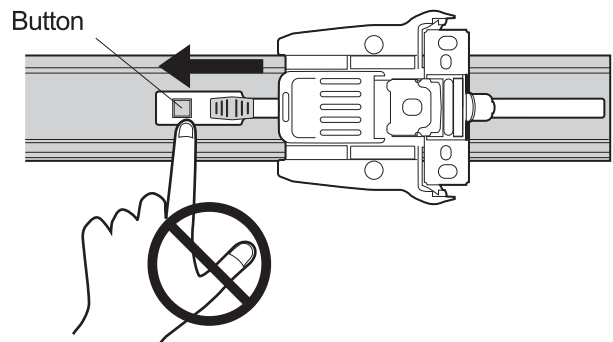
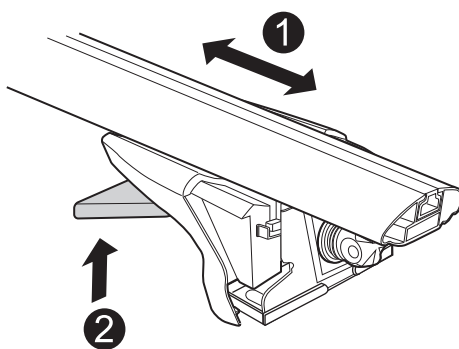


Confirm that the stay end is inside the base unit.

Confirm that the hook on the back side is securely connected to the base unit's insertion point.



With the lever completely open, adjust the bar protrusion amount in the left and right directions. Close the lever to secure the bar.



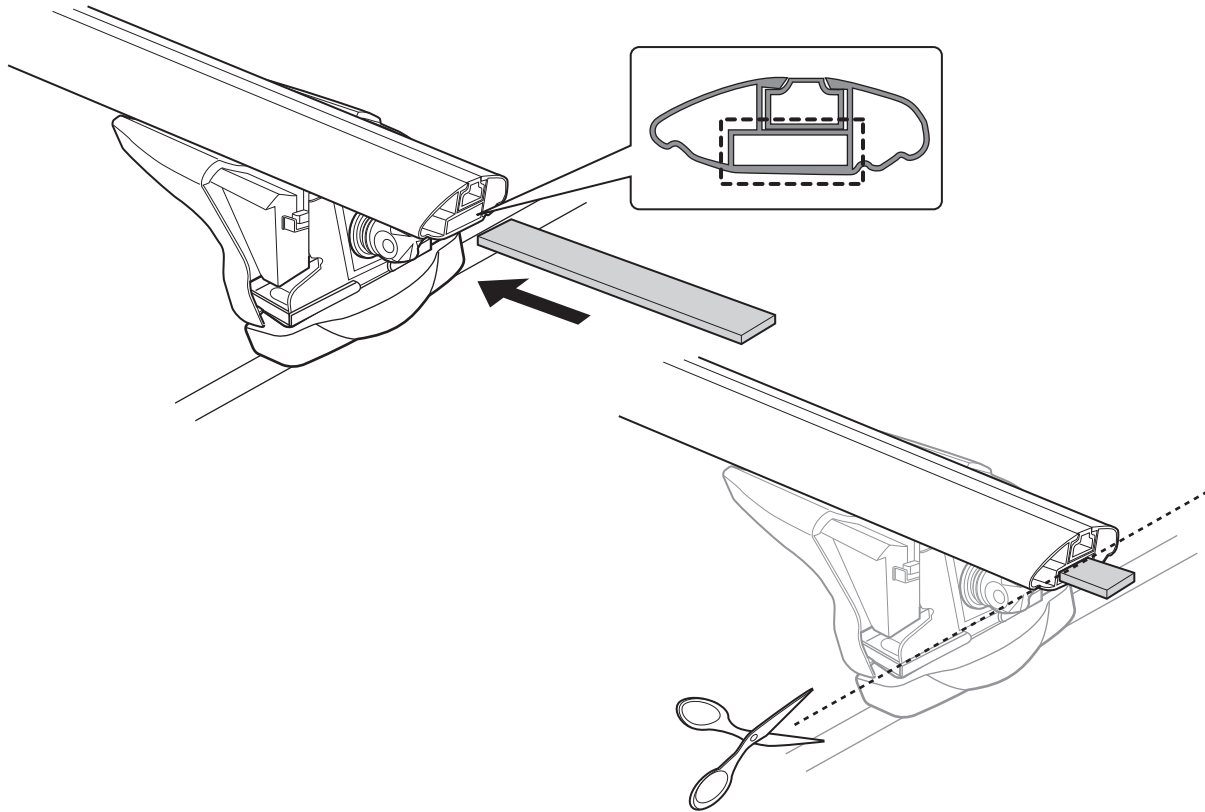
Adjust within the movable range without pushing the button.



Note Lever may not close completely, however, the lever will close when the bolt is tightened.

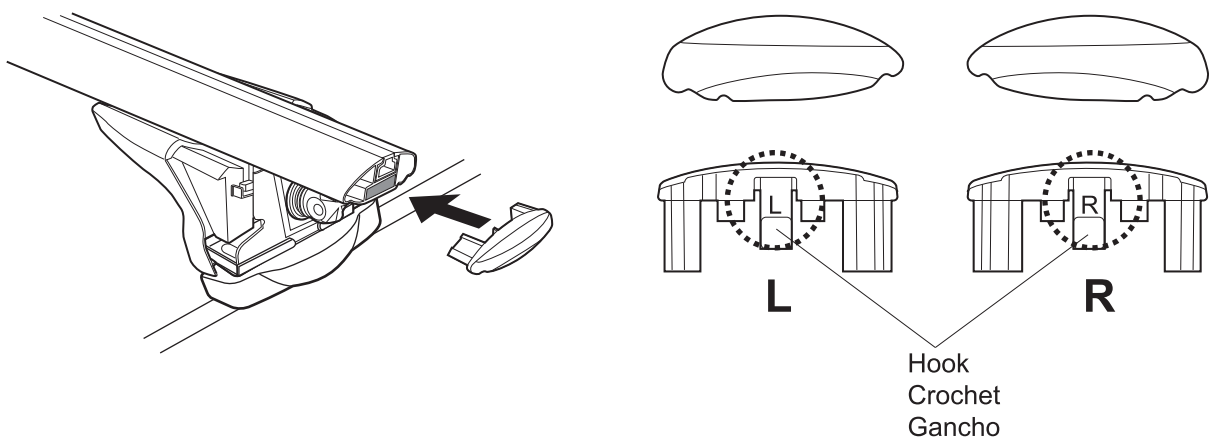
8

Insert the inner block into the inner bar end completely and cut the protruding portion.



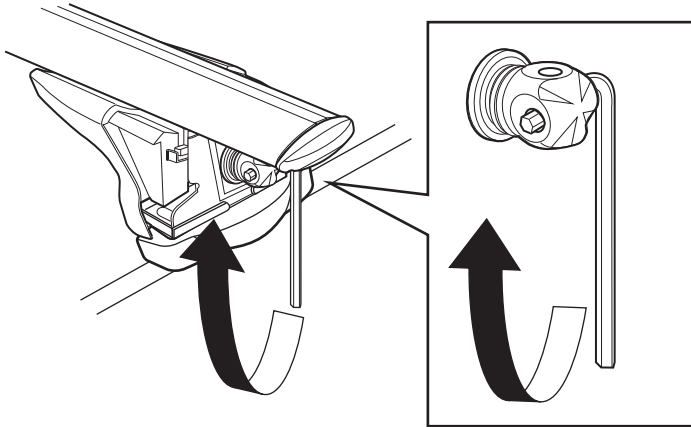
9

Attach the end garnish to the bar.(Confirm L and R of the end garnish before attaching.) Insert while pressing the hook on the underside.

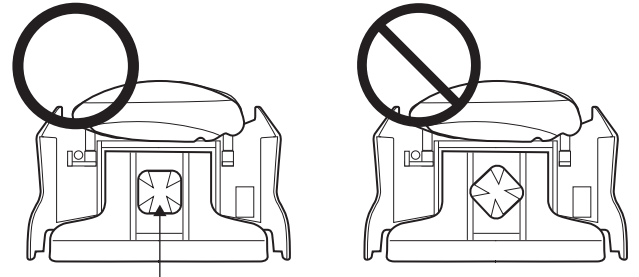


10

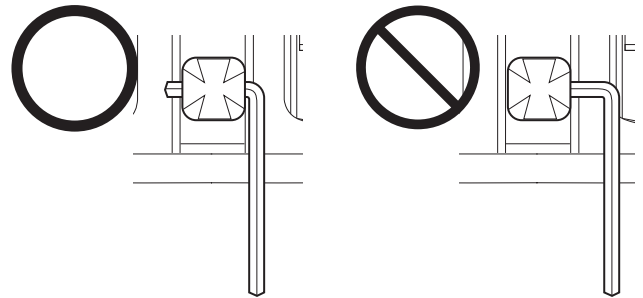
Insert the hex wrench (included) into the bolt hole and tighten.  
(Approx. torque: 3N·m / 2.2ft-lb)



Always use the wrench and tighten fully by moving from hole to hole.



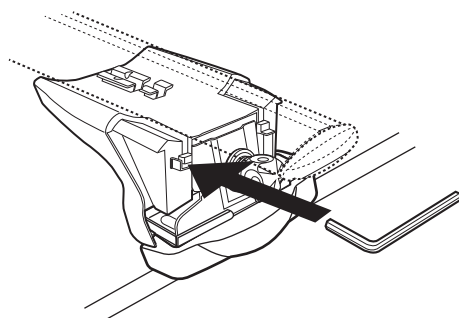
When finished tightening, confirm that the bolt hole is in a non-diagonal position.



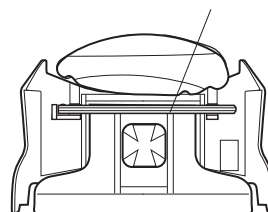
Turn the bolt with the hex wrench fully inserted.

11

After tightening all of the bolts on each of the 4 stays, remove the hex wrench and store.



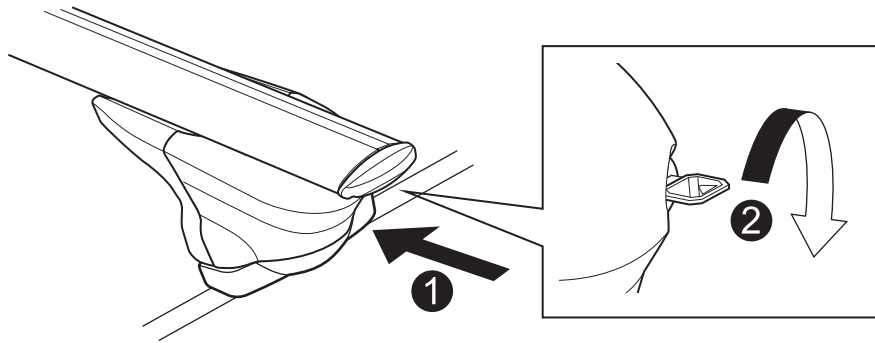
Hex Wrench





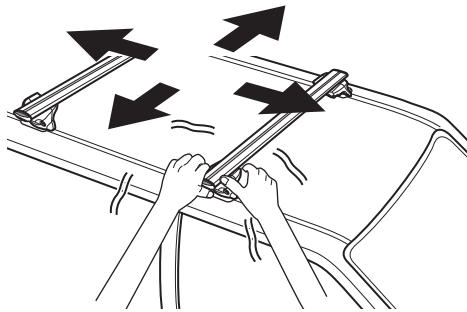
12

①Place the cover and ②lock. (The cover does not have a L or R.) If the cover doesn't close completely, check the position of the bolt. ( 10 )



13

Shake the carrier in all directions to check for looseness. If loose, tighten using the bolt.

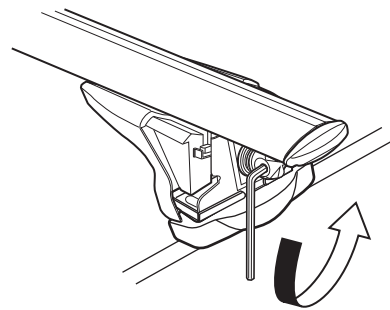
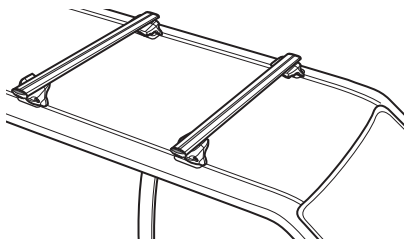


How to remove from the vehicle.

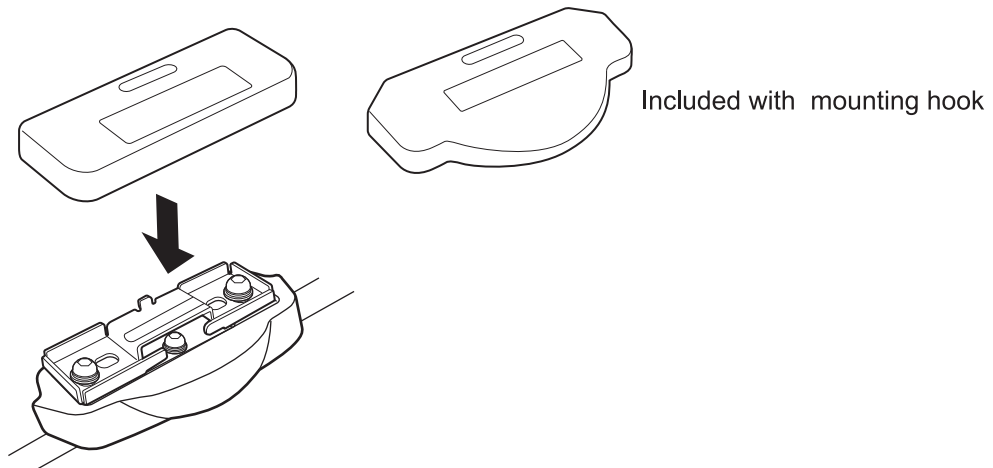
Loosen the bolt to detach the base rack system from the vehicle.

When re-mounting, the bar width adjustment will not be required.

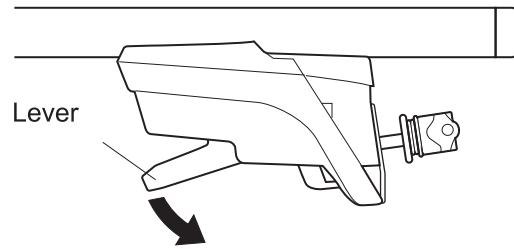
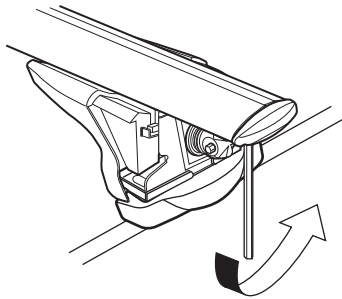
When re-mounting, be sure to mount the front and rear carriers in their designated positions.



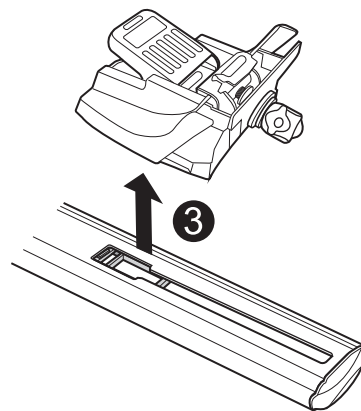
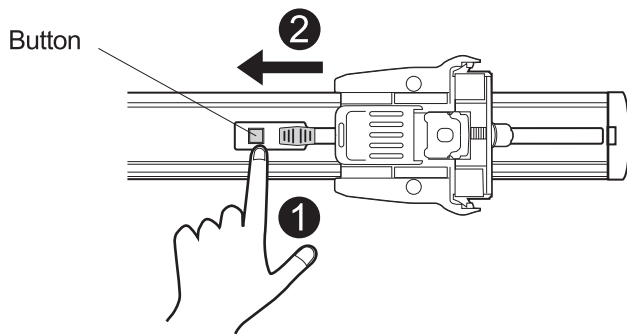
After removing the stay and bar, only the base unit remains on the vehicle. Attach the base cover to the base unit.



How to remove the bar  
Loosen the bolt and release the lever.

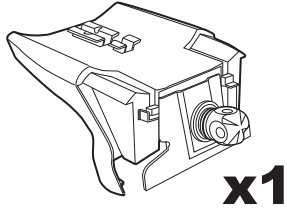


Press the button and slide the stay to remove.

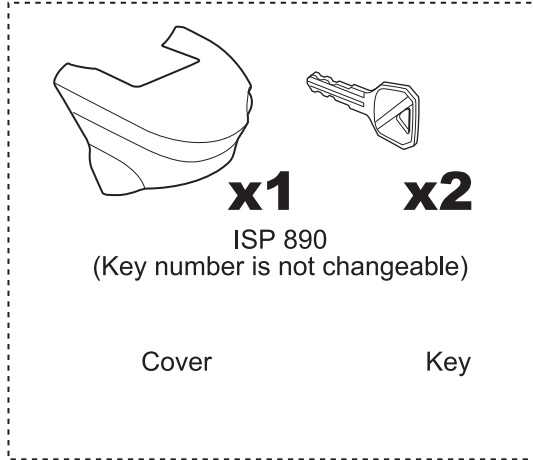


# Repair parts

Please specify part name when ordering repair parts.



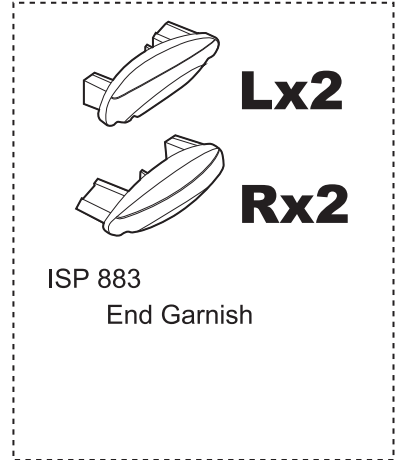
ISP 889  
Stay main unit



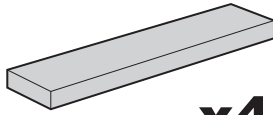
ISP 890  
(Key number is not changeable)

Cover

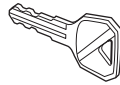
Key



ISP 883  
End Garnish



ISP 884  
Inner Block



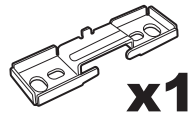
Key



XS350 Installation Instructions



ISP 999  
Bolt [M6x15]



ISP 857  
Base Unit



ISP 858  
Base Cover



ISP 17  
Hex Wrench