

Installation Instructions

Before using the Mounting hooks, carefully read this installation instruction as well as the installation instructions for basic carrier systems, and follow all usage instructions. After reading the manual, keep it in a safe place along with the installation instructions for basic carrier systems. If you are to give the mounting hooks to a third person, provide this manual to ensure safe installation and usage.

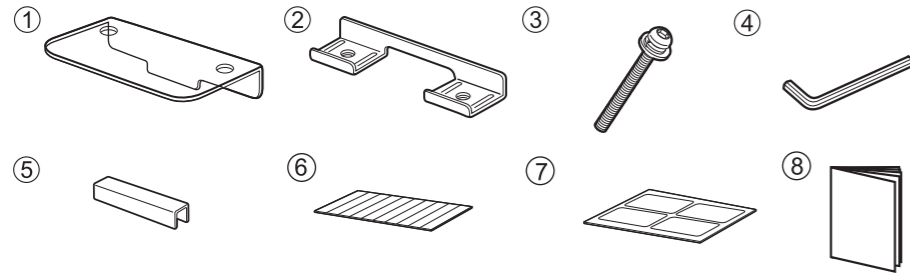
Read instructions matching the model
If appropriate instructions are not available

Precautions

- Install hooks correctly at specified positions according to the instructions herein and instructions for the applicable carrier system. Installation positions of hooks depend on the vehicle type. If hooks are not installed at specified positions, the carrier may fall and cause an accident.
- If inappropriate hooks are used, the carrier / attachment may drop and cause accident.
- ... Before driving the vehicle, rock the stays and bars in all directions to ensure that there is no looseness. Retighten any loose knobs or bolts.
- Do not use these hooks for attachments of non-specified types. The carrier may drop and cause accident.
- Observe the specified loading conditions. Failure to observe the loading condition may cause the carrier to break or loosen and drop, resulting in accident.

For INNO dedicated ski & snowboard carriers read carrier instruction manuals for determining proper mounting locations.

The TR Mounting hooks includes the parts listed below. Verify that all of these parts are included in the carrier system you have purchased.

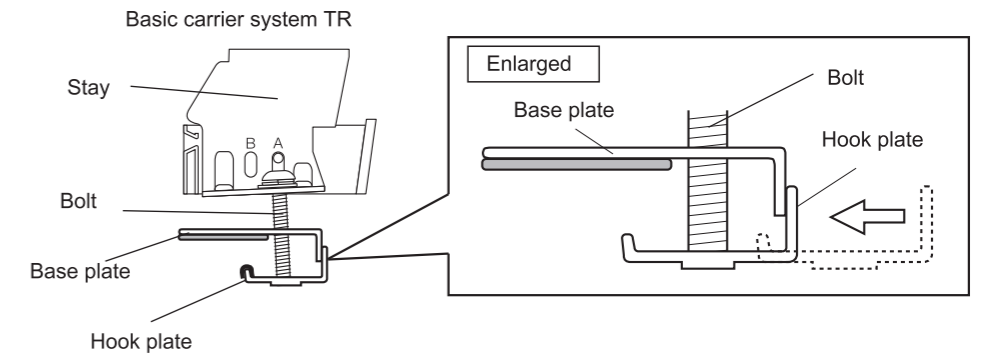
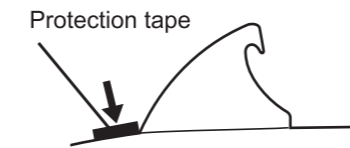
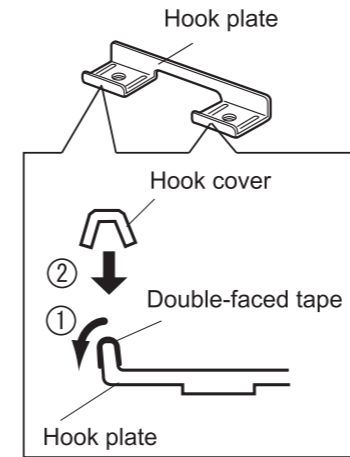


No.	Parts	Qty
①	Base plate	4
②	Hook plate	4
③	Bolt (M6 x 30 mm)	8
④	Hex wrench	1
⑤	Hook cover	10
⑥	Double-faced tape (10)	1
⑦	Protection tape (4)	1
⑧	Instructions	1

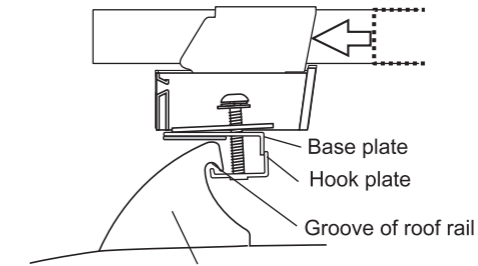
Note

Installation procedures are described for different models, years and types.
If your car doesn't match any of the vehicle types listed, refer to the instructions for the applicable carrier.

TR103

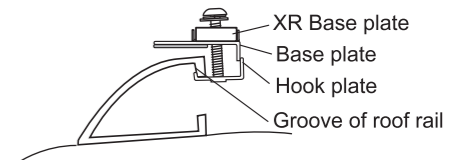


Attach the stay base plate and hook plate with 2 bolts. At this point, do not tighten the bolts all the way. Use inner holes for bolts.



Slide hook plate into the groove of roof rail.

Basic carrier system XR



Installing carrier TX

