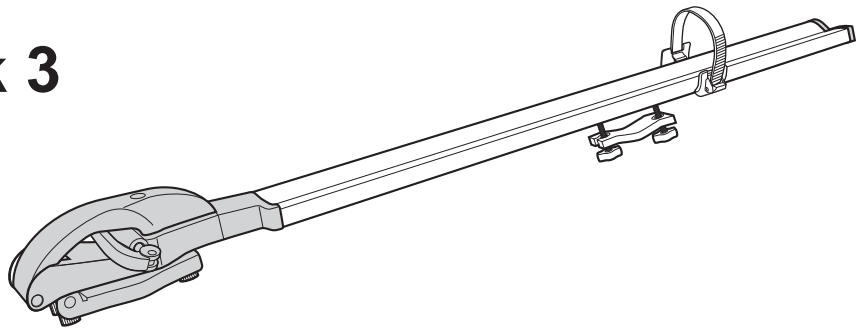


# INA391

## Fork Lock 3



Thank you for purchasing this INNO product.

-Read these instructions carefully before using this product Do not discard these instructions.

**WARNING** Falling carrier parts or loads may cause potentially serious accidents involving vehicles and individuals following behind may result in severe injury or death.

- Confirm the stability and strength of the carrier base onto which this product is to be installed, and attach it securely.
- Maintain a distance of 20"- 31"(50-80 cm) or more between the front and rear carriers/crossbars. If adjustment of the distance is possible, keep as much distance as possible in order to increase load stability.
- Assure that neither screws nor wires are loose before driving.
- Do not alter this product.
- Do not load anything other than a bicycle or load more than one bicycle onto a single attachment system.
- Exercise due care when driving while using this carrier.
- Lock securely while driving.

**CAUTION** May cause injury to individuals or damage to the product, vehicle and loads being carried.

-This product is not theft-proof. Therefore, do not leave equipment on this product unattended for long time.

### Spare Part Information

The following genuine spare parts are available for this lock. If you require spare parts, take the part to the dealer where you bought the carrier, or order the necessary part using the part name listed below.

<div>ISP728</div>	<div>ISP730</div>	<div>ISP733</div>
<div>ISP731</div>	<div>ISP732</div>	<div>ISP729</div>
<div>Please check the key No.</div>		

**Notes** Specifications and external appearances of this carrier and genuine repair parts are subject to change without notice in the interest of product improvement.

Before Use

Attaching to the Carrier Base

This product can be installed onto square bars, round bars and most factory cross bars. (\*1)  
When installing on a commercially produced carrier base, attach securely according to the instructions provided by the product manufacturer.  
\*1 Some factory cross bars require ISF725 long bolts kit (sold separately).

■ MAXIMUM CROSSBAR SIZE

~3 1/2 inch/po/pulg (90mm)

H: 5/8~1 1/8 inch/po/pulg (15-30mm)

T: 1 3/4~ inch/po/pulg (45- mm)

H: 1 1/8~2.0 inch/po/pulg (30-50mm)

Needs ISF725

T: Distance to roof

20~31 inch/po/pulg (500-800 mm)

7 7/8 inch/po/pulg (200 mm)

Stay Étai Soporte ステー

WARNING

-Check vehicle or carrier base product instructions to confirm that the carrier/crossbar to which this product is to be installed has sufficient strength to support this product. If the carrier /crossbar does not have sufficient strength to support this product, do not install.

-Maintain a distance of 20"- 31"(50 -80 cm) or more between the front and rear carriers. If adjustment of the distance is possible, keep as much distance as possible in order to increase load stability.

-This product requires a width of 7 7/8" (200 mm) for installation. However, If more than one Slim Fork is used, the bicycles may interfere with eath other, depending on their size.

-Do not attach the product on the bars above the stays.

WARNING

20~31 inch/po/pulg (50cm~80cm)

The space between the front and rear carriers / crossbar must be between 20-31 inch.(50-80cm) Assume that neither knobs nor bolts are loose before driving.

Mount the bicycle attachment system so that the bicycle's handlebar doesn't protrude toward the side, exceeding the width of the vehicle.

Before driving the vehicle, always check the vehicle's overall height, including the bicycle loaded on the roof of your vehicle, and remind yourself to be aware of low-clearance parking garage tunnels and other structures

Always use the key lock to secure the carrier.

Be careful not to hit the bicycle with the vehicle's tailgate or trunk lid. In case your gear is accidentally hit by the tailgate or trunk lid, be sure to check the carrier's mounting condition.

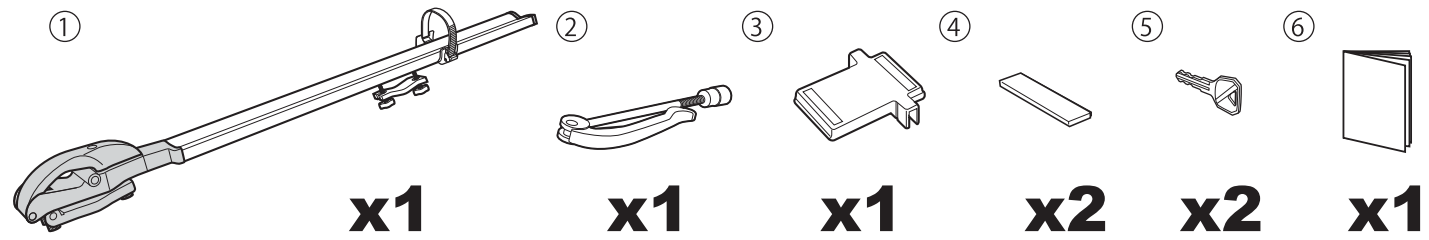
Do not load anything other than a bicycle or load more than one bicycle onto a single attachment system.

When loading a bicycle, do not use the gear casing or protective plastic packaging.

When driving with items loaded, observe the local speed limit. Reduce your driving speed in strong winds and bad road conditions.

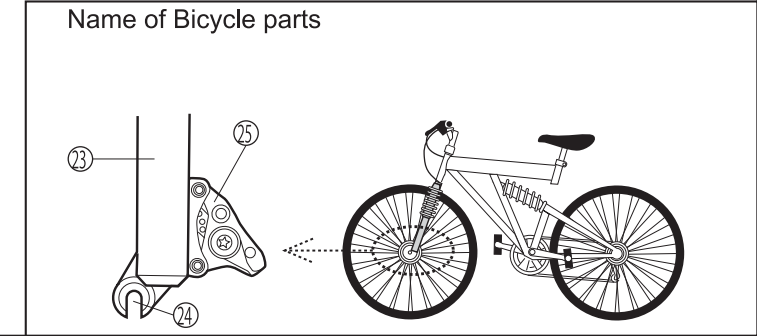
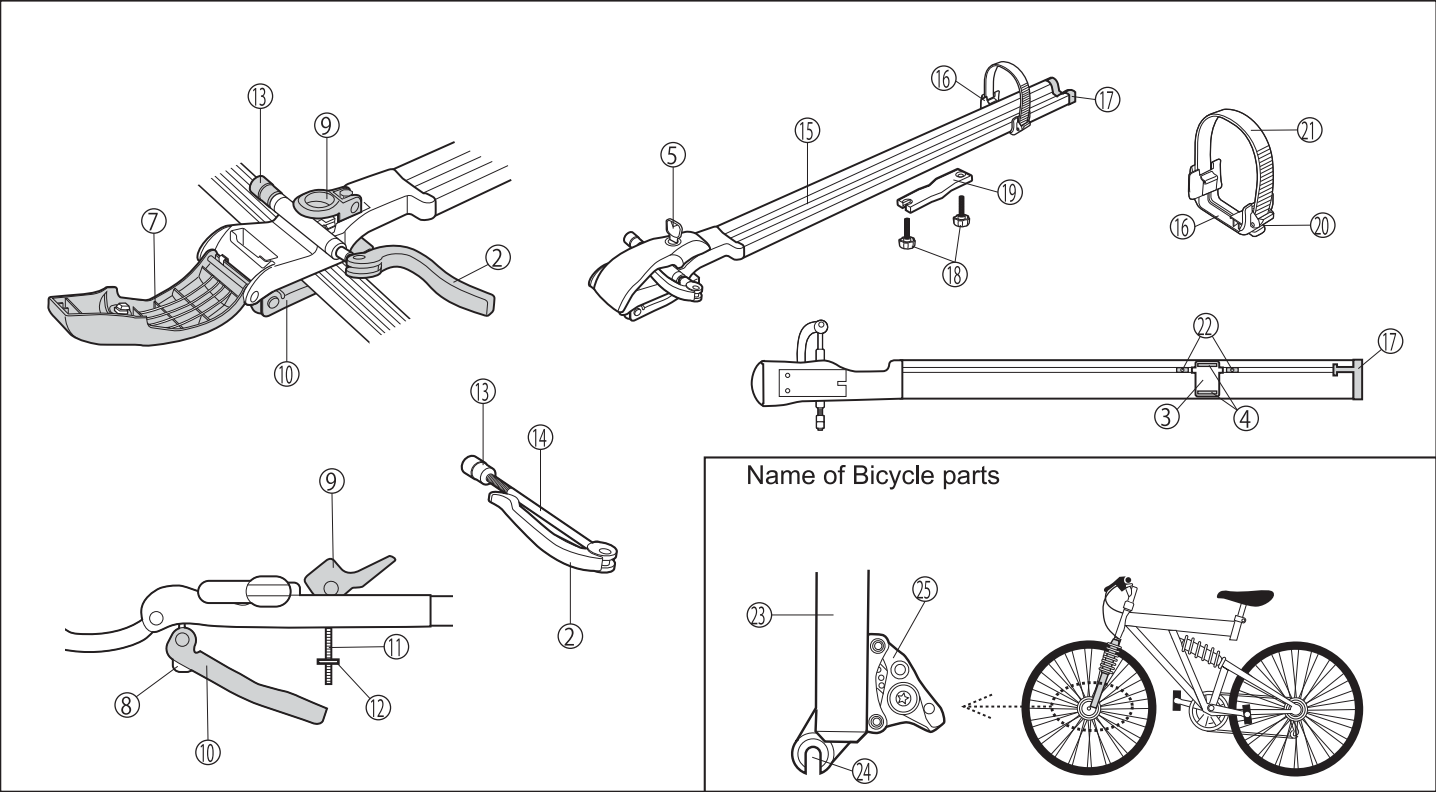
Always remove the carrier system before running your car through a car wash.

1 Content of Parts

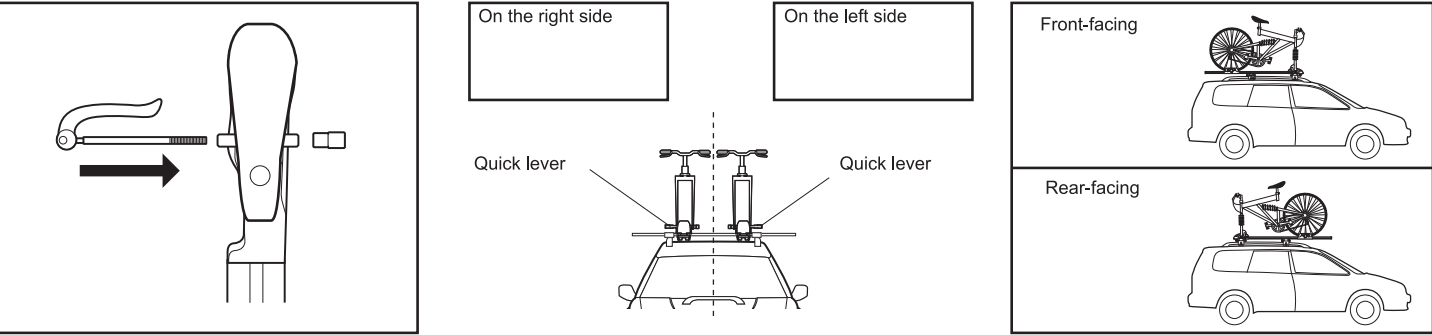


Name of Parts

NO.	Part
①	Main Body
②	Quick lever ASSY
③	Spacer
④	Rubber sheet
⑤	Key
⑥	Instruction Manual
⑦	Front cover
⑧	Adjustment knob
⑨	Lever
⑩	Plate
⑪	Lever bolt
⑫	Square nut
⑬	Adjuster
⑭	Quick shaft
⑮	Frame
⑯	Holder
⑰	End Cap
⑱	Knob Bolt
⑲	Lower Plate
⑳	Buckle
㉑	Wheel Belt
㉒	Nut Plate
㉓	Front Fork
㉔	Front Hub
㉕	Disk Brake Caliber

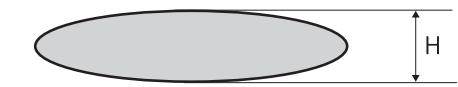


Preparation before Installation



Choose the position (right side or left side) and direction (mounting bike to front or back) of the bike carrier on the vehicle. Make sure installation position to attach Quick Lever ASSY.

When installing the cross bar

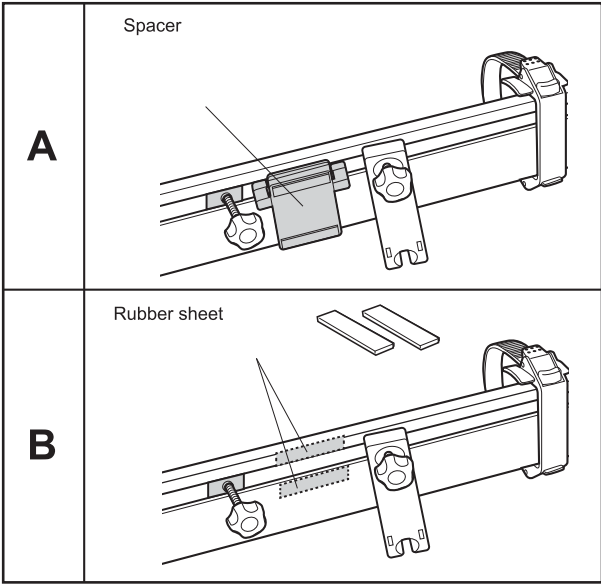


H: 5/8 - 7/8 inch / po / pulg ( 15 - 21 mm ) ——— **A**

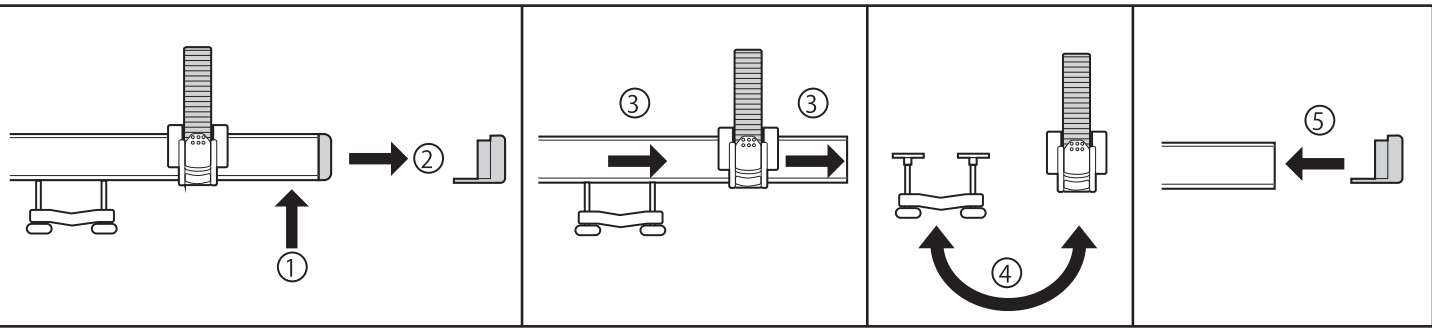
H: 7/8 - 1 1/8 inch / po / pulg ( 21 - 30 mm ) ——— **B**

H: 1 1/8 - 1 5/8 inch / po / pulg ( 30 - 40 mm ) ——— **A**  
Needs ISF725

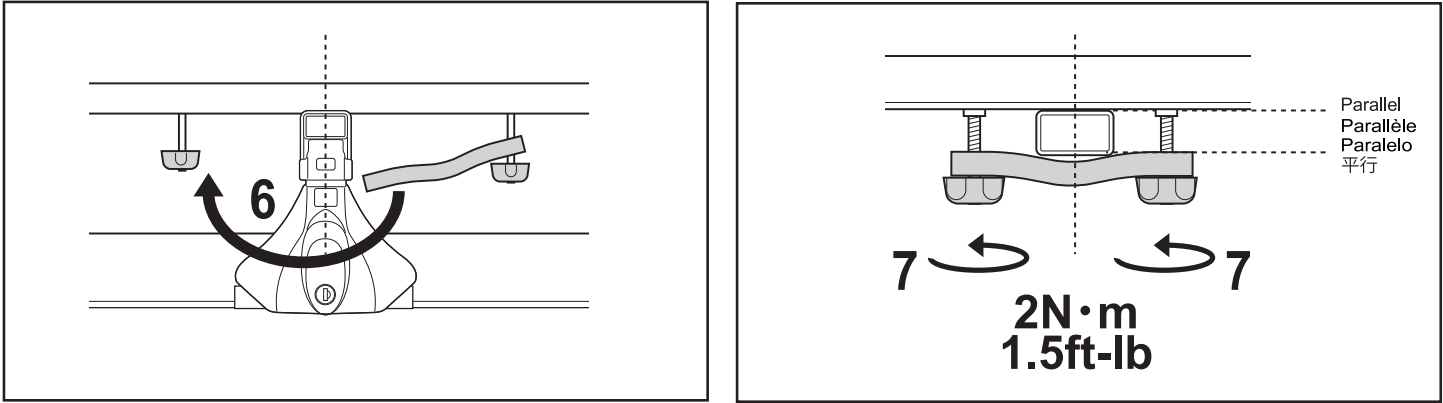
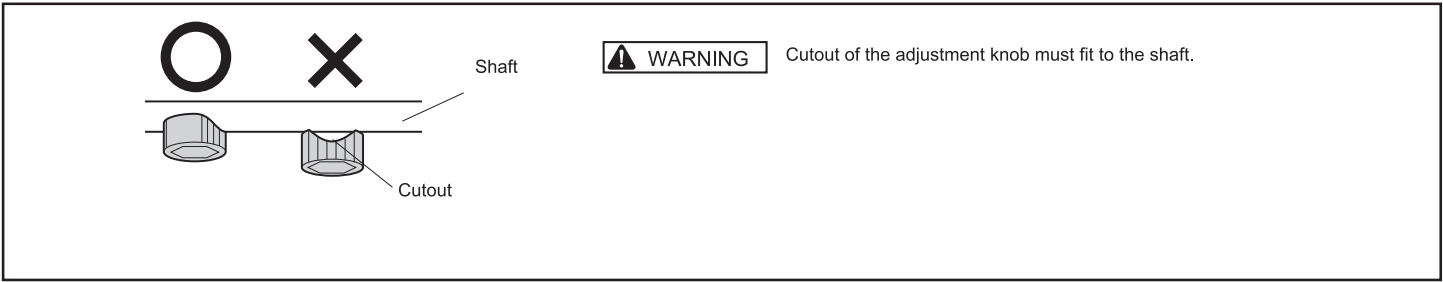
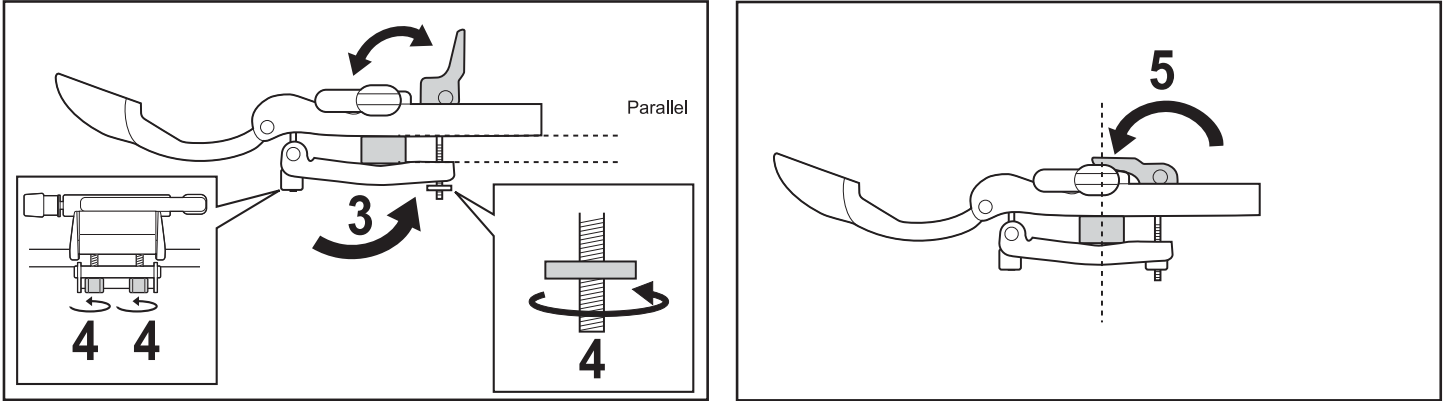
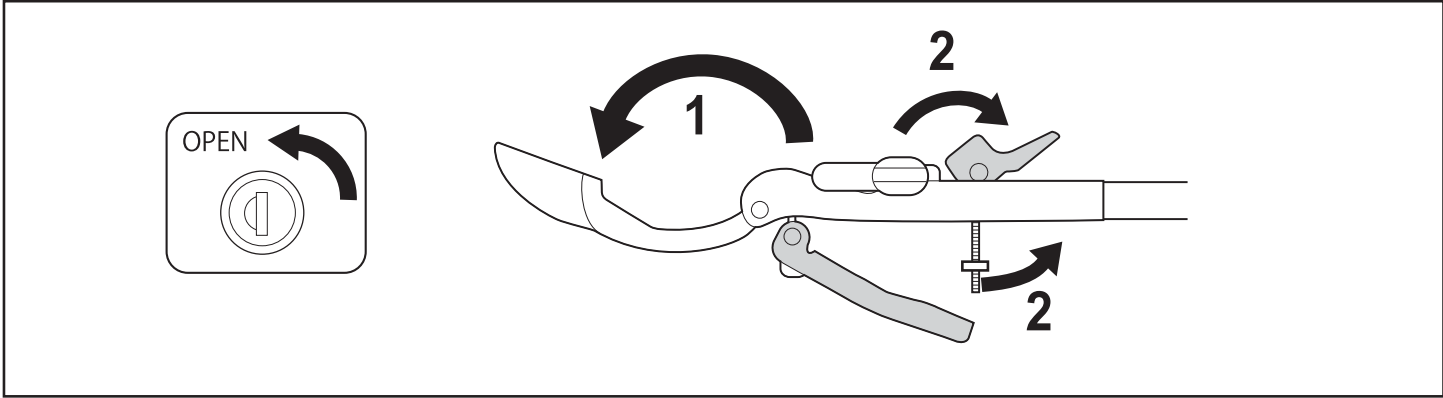
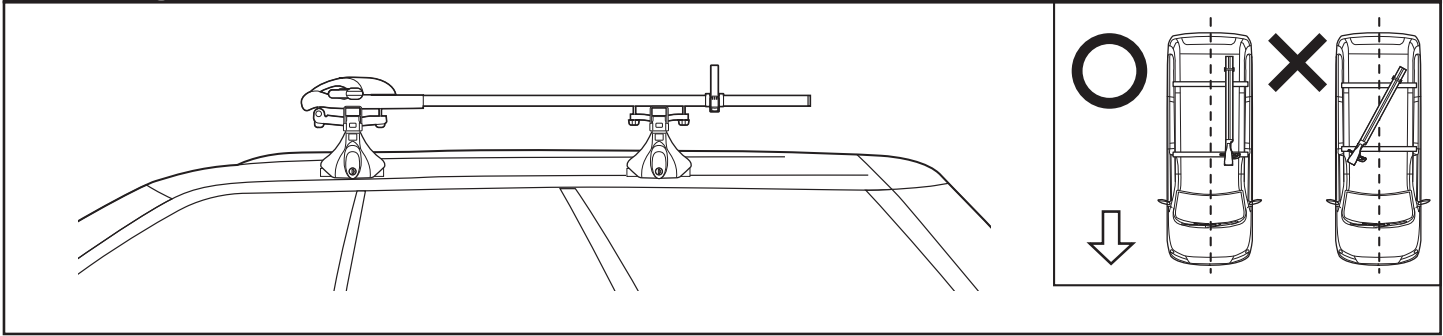
H: 1 5/8 - 2.0 inch / po / pulg ( 40 - 50 mm ) ——— **B**  
Needs ISF725



How to replacement of the holder



Installing

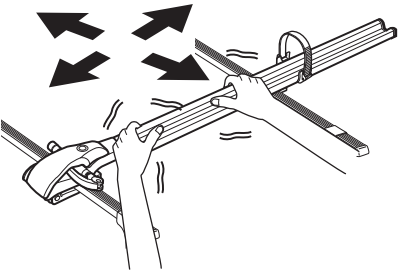


Installing

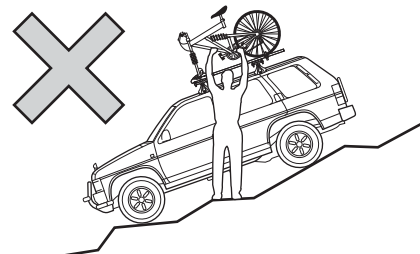
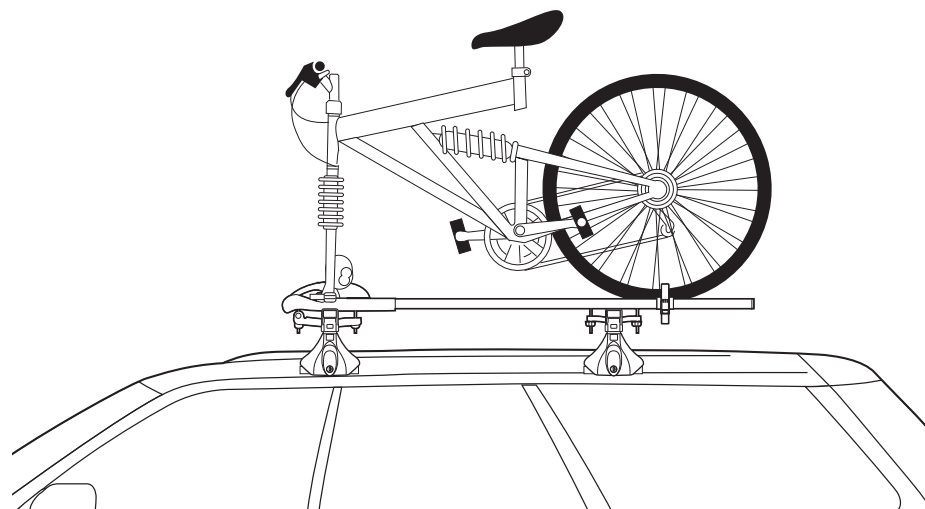
- 1 Insert the key to release the lock , then open the front cover.
- 2 Lift the front lever to remove the square nut from the plate.
- 3 Place the plate below the carrier / crossbar making sure that the plate is centered to the carrier / crossbar.  
Slide the square nut and bolt into the plate cutout.
- 4 Adjust the square nut and adjustment knobs according to the carrier/cross bars size. Height of Adjustment knobs must be same.
- 5 Hold down the lever to tighten. The plate and the main body must be placed parallel. If they are not parallel, readjust.
- 6 Slide the knob bolt to remove from the lower plate. Place the lower plate under the crossbar.
- 7 Make sure the center of both the lower plate and the crossbar are centered to each other.  
Assemble the knob bolt to the lower plate, then adjust them. Make sure the lower plate is parallel to the frame.  
Tighten the knob bolts to fix securely. If lower lever is too tight or loose, adjust tightening of the knob to fix securely.

【Check Installation

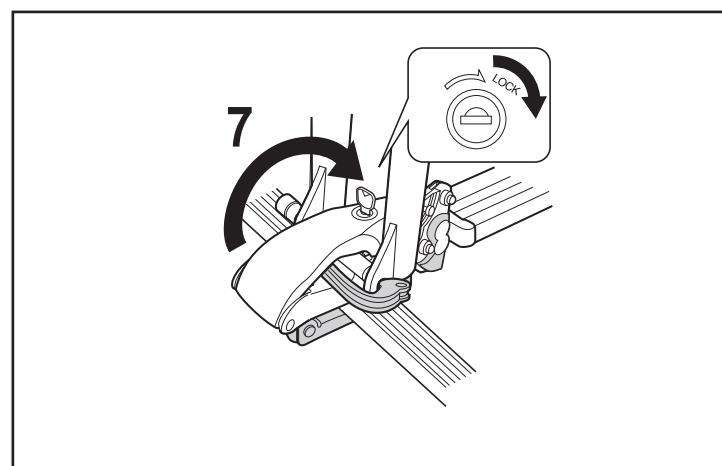
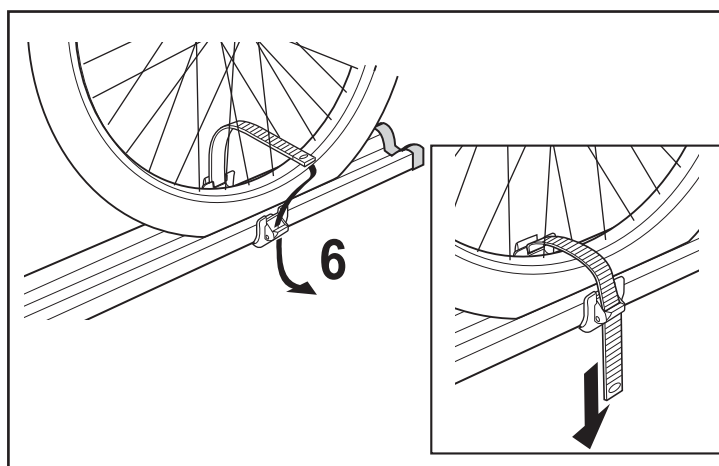
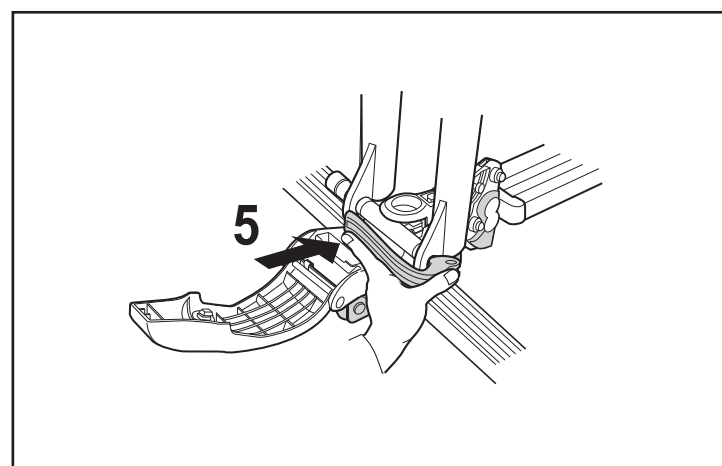
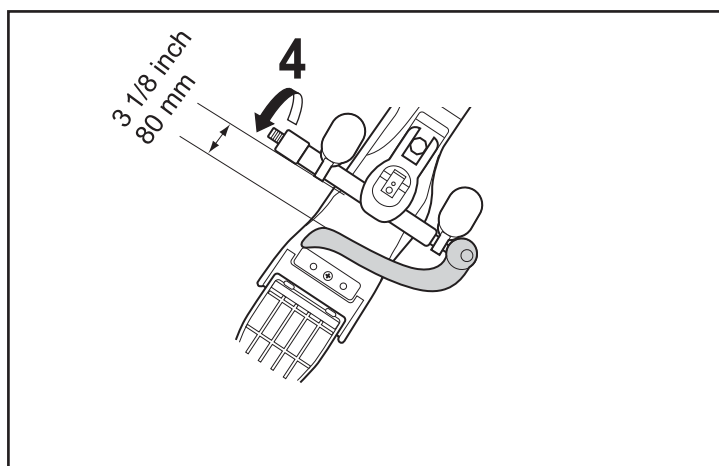
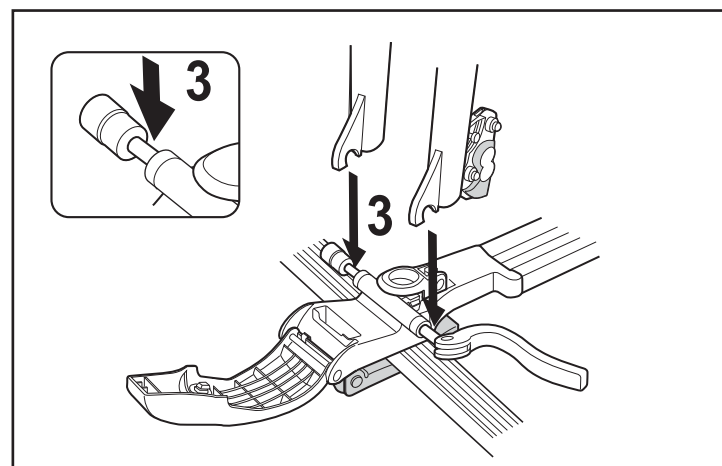
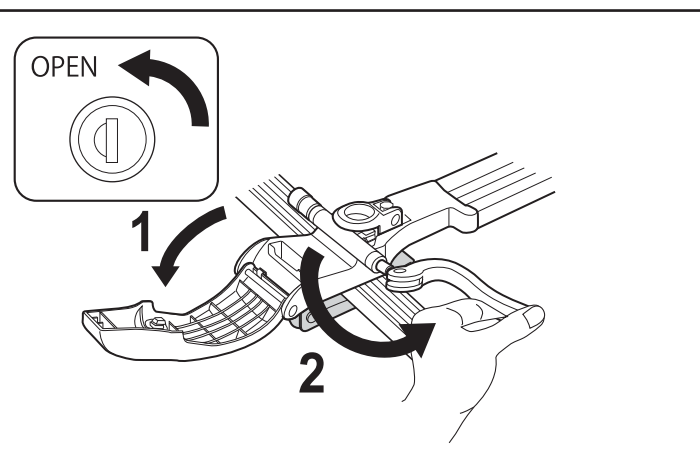
- Shake the carrier and equipment load in order to confirm that they are set securely.  
If there is any looseness, tighten the bolts and knobs again.
- Load equipment straight.
- The center of the each plate and the center of the base carrier must be on the same line.



## Loading



Make sure to load/take down bicycle on flat and stable ground.

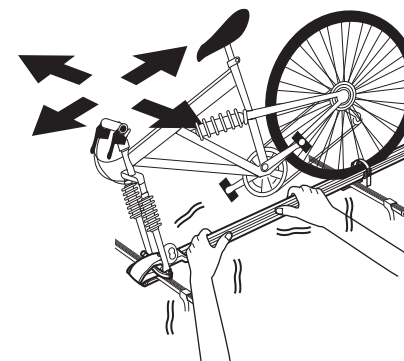


## Loading /

- 1 Open front cover.
- 2 Pull quick lever.
- 3 Place the edge (dropouts) of the front fork of the bicycle onto the quick shaft.
- 4 Close quick lever loosely, so that space between quick lever and stopper is about 3 1/8 inch ( 80 mm), then tighten adjuster to fix.
- 5 Close quick lever until Lever touches stopper. The adjuster cannot be tightened when the bicycle is affixed and tightened.
- 6 Move wheel belt to center of rear tire, then tighten tire with wheel belt.
- 7 Close front cover, then lock key.

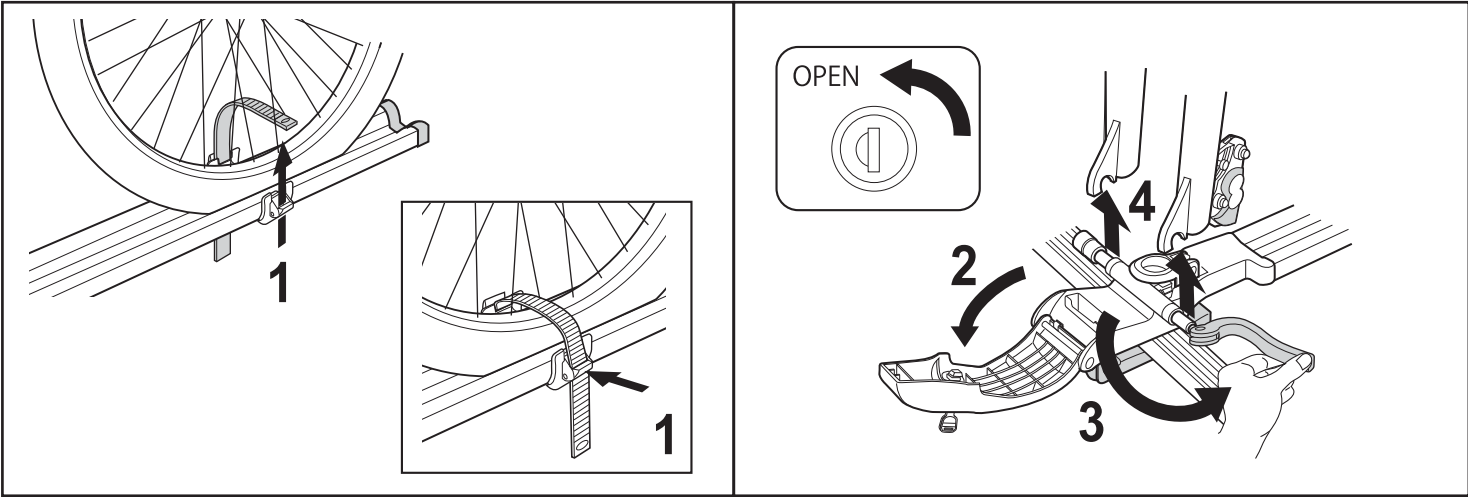
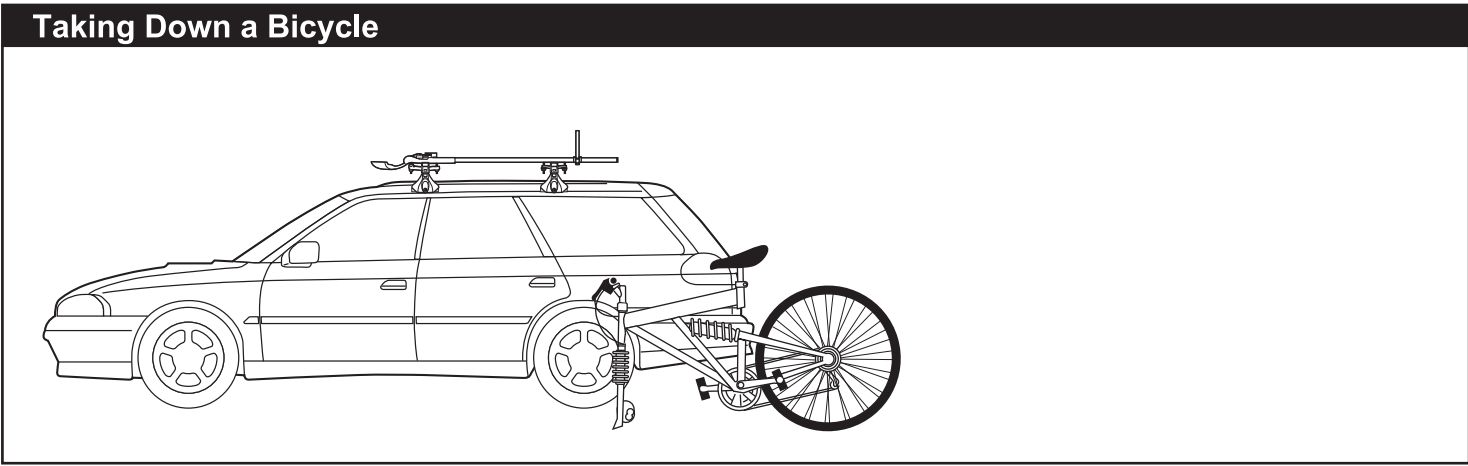
### [Check Installation

- Shake the carrier and equipment load in order to confirm that they are set securely.  
If there is any looseness, tighten the bolts and knobs again.



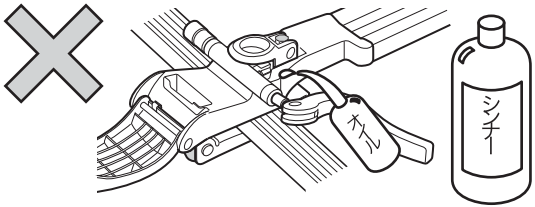


Taking Down a Bicycle



- 1 Remove Wheel Belt.
- 2 Open front cover.
- 3 Pull quick lever.
- 4 Hold bicycle securely, pick up bicycle vertically, and take down bicycle.

Daily Maintenance /

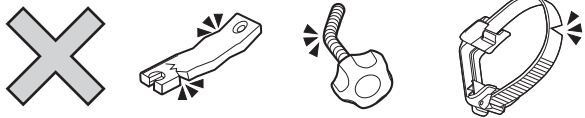


- 1 Wash off dirt and mud with water.
- 2 Wipe off dirt with a well wrung-out wet towel.
- 3 Allow it to dry in the shade.

CAUTION -DO NOT lubricate Key and Bolts. -DO NOT apply thinner and/or solvent as they may damage plastics.

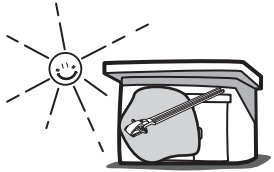
Care and storage

Inspecting the parts



Clean the parts, and inspect each of the parts for abnormalities. If you discover any bent or damaged parts, discontinue use immediately and replace the parts.

Storage



Store in a covered, dry location away from sunlight.