

# inno. IN FR Installation Instructions

Thank you for purchasing this INNO product.

- Please read through this manual thoroughly before use, and make sure that you follow all of the instructions carefully.
- After reading this instruction manual, store it in a safe place for future reference.
- Read the INNO common installation instructions (the accompanying sheet) as well.

## Warning

Parts or loaded items falling from the lock can cause serious accidents, involving passers by or other cars, which may lead to serious injury or death.

- Before using this product, check the vehicle compatibility table to make sure it is compatible with your vehicle.
- Before using this product, check the type of objects that can be loaded and maximum load weights according to the type of vehicle.
- Before driving, make sure that the knob is not loose
- Do not attempt to modify the carrier system.
- Always use the key lock to secure the carrier.

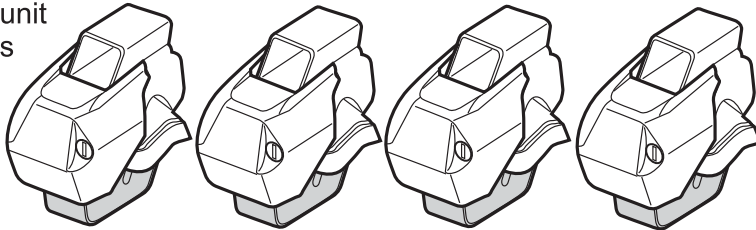
## Caution

There is a risk of injury, or damage to the lock, vehicle, or loaded items.

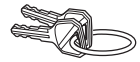
- Install the front and rear bars with a space between them greater than 20 inch (50cm).
- Always drive safely.
- Do not open the sunroof.
- Do not use automatic car washes.
- Load evenly.

## Product Contents

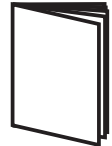
- ① Main unit  
4 units



- ② Key 2 keys



- ③ Instruction manual  
(this manual)

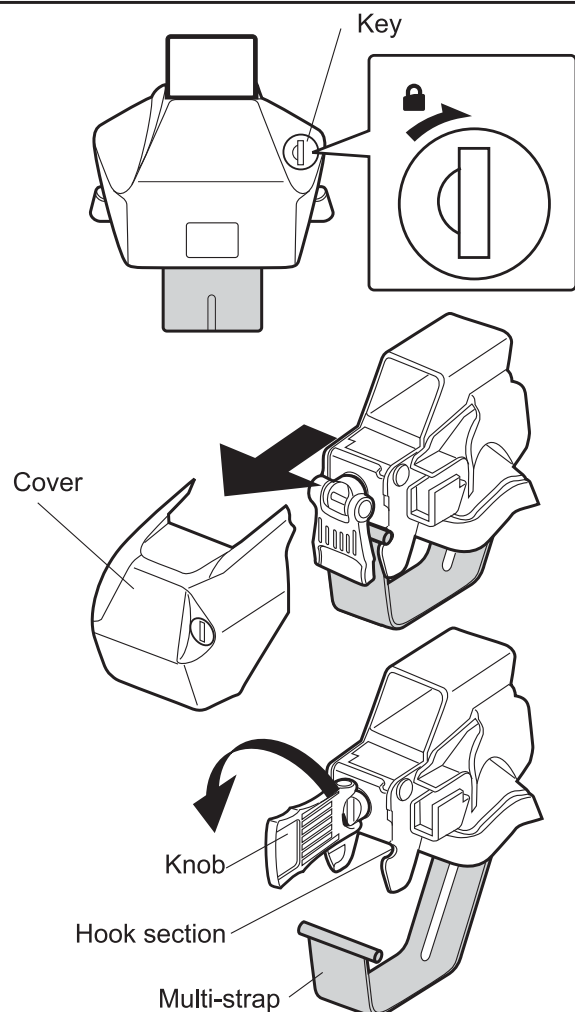


## Preparations Before Installation

- 1 Clean the roof rails.

- 2 Open the lock using the key, and pull the cover forwards to remove it.

- 3 Loosen the knob, and remove the multi-strap from the hook section.



## Installation Procedure

**4** Insert the bar into the main units so that the knob is on the outside. **(STEP1)**

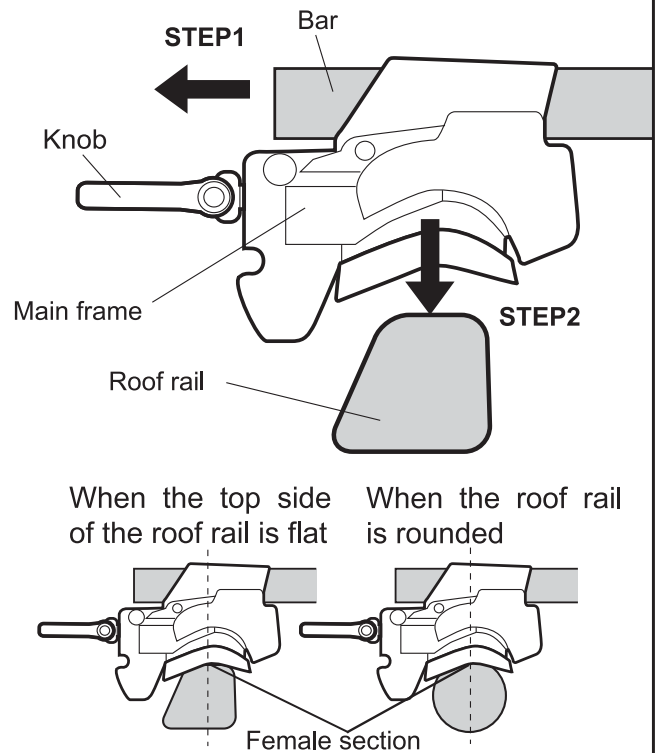
**5** Line up the female section of the main unit base section with the center of the roof rail upper section, and place it on the roof rail. **(STEP2)**

**⚠ Caution**

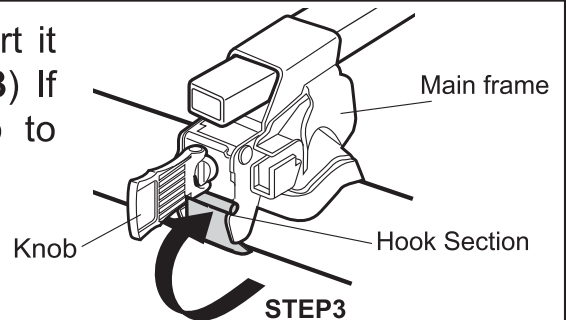
The space between the front and rear bars must be greater than 20 inch (50cm). Please make sure you follow instructions in the attachment instruction manual correctly.  
Load evenly.

**📖 Note**

The 8 grooves on the bar face upwards.



**6** Run the multi-strap under the roof rail and insert it into the upper hook of the main body. **(STEP 3)** If the multi-strap is too short, loosen the knob to extend the multi-strap and insert.



### Roof rail Information (If you are still unable to insert the multi-strap after extending it to its full length)

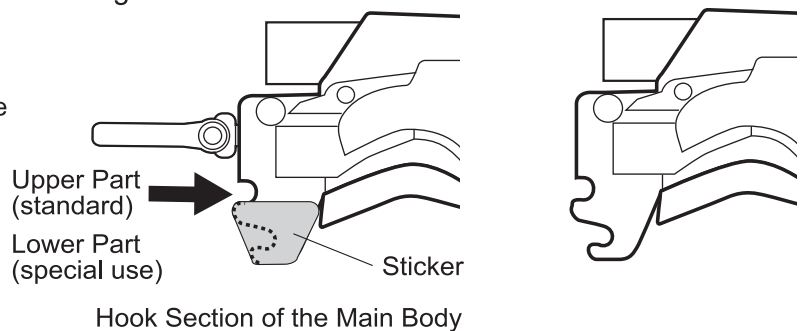
Insert the multi-strap into the lower hook after removing the cover sticker.

**⚠ Caution**

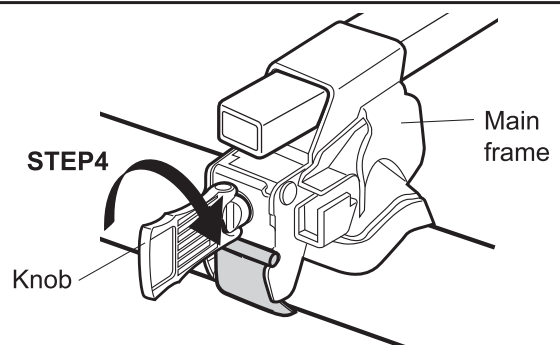
· Use the lower hook only when the roof rail is too thick for the multi-strap to reach around. Use of the lower hook for installation onto a standard roof rail might interfere with the tightening of the knob.

**📖 Reference**

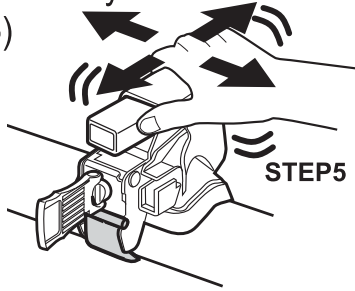
· See the illustration in these instructions for the procedure to remove the lower hook cover sticker.



**7** Thoroughly tighten the main unit knobs on both sides to fix the main unit in place. **(STEP4)**



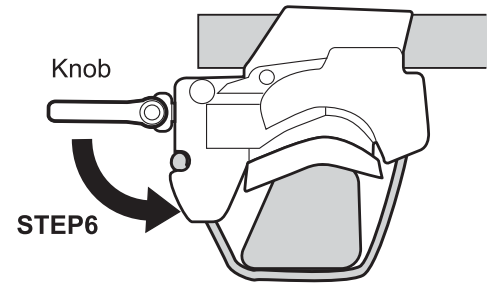
- 8** Pull the bar forwards and backwards, and left and right to check that it is installed correctly.  
(STEP 5)



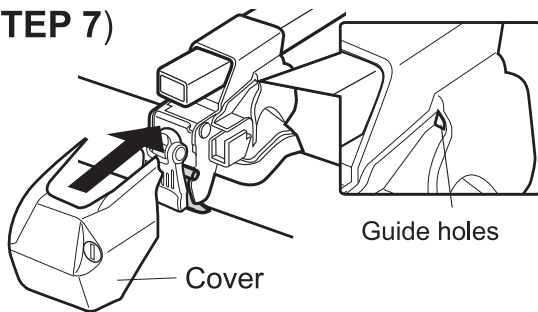
**Caution**

If any of the parts are loose, re-tighten them.

- 9** Tighten further until the knobs are level, then fold beneath the lower side.  
(STEP 6)



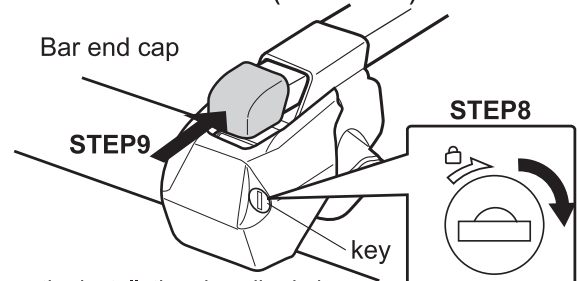
- 10** Insert the cover into the guide holes on the main unit to cover the unit.  
(STEP 7)



**Note**

The knob cannot be covered if it is not folded down correctly.

- 11** Use the key to lock the main unit.  
(STEP 8)
- 12** Insert the bar end caps into the ends of the basic bar.  
(STEP 9)



Perform the installation described above on both the front and rear bars.

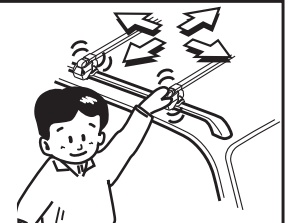
**Removal Procedure**

- 1 Unlock using the key, and remove the cover.
- 2 Loosen the knob, and remove the multi-strap from the hook section.
- 3 Remove the bar and left/right stays from the roof rail.
- 4 Remove the end cap, and remove the stay from the bar.

**Checks before driving**

**Warning**

Before driving, check front, rear, left and right stays and bars for looseness, and the knobs (4 locations) for looseness. If any of them are loose, re-tighten them.



**Daily Maintenance**

- Wash off dirt and mud with water.
- Wipe off dirt with a well wrung-out wet towel.
- Allow it to dry in the shade.

**Caution**

- Do not use solvents such as thinner etc.
- Do not lubricate screws or bolts.



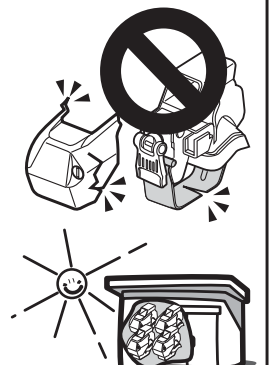
**Storing the Lock**

**Part inspection**

Clean the product, and inspect each of the parts for abnormalities. If you discover any deformed or damaged parts, discontinue use immediately and replace the parts.

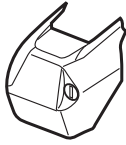
**Storage**

Store in a dry place indoors, out of direct sunlight.



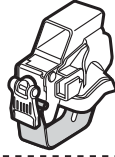
## Spare Part Information

The following genuine spare parts are available for this product. If you require spare parts, take the part to the dealer where you bought the carrier, or order the necessary part using the part name listed below.



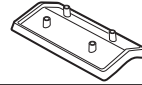
Cover (Including 2 keys)  
1 pack

The key number cannot  
be specified.



FR Stay Assembly  
(Including 2 keys)  
1 pack  
The key number cannot  
be specified.

Base (1 pack)



Key (1 pack)  
Please check the  
key number.



Instruction Manual  
1 Manual

