



Part number SES1836TT
 2008 Mitsubishi Lancer 2.0L
 4 cyl.

1- Axle back exhaust system
 1- Grommet hanger (#20089)
 2- m10 flange nuts and bolts (#17001)
 2- m8 x 16mm hex bolts (#6018)
 1- SES exhaust sticker
 1- Instruction



Note: The installation of this axle back exhaust system does require mechanical skills. Injen strongly recommends that this system be installed by a professional mechanic.

Start the installation by removing a portion of the exhaust system from the rear axle-back.



Figure 1

Line up the new plate hanger to the center of the rear axle and use the two m8 bolts.

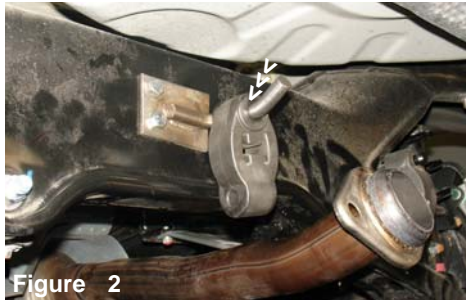


Figure 2

The hanger is installed and one of the unused grommets is re-hung on the hanger.

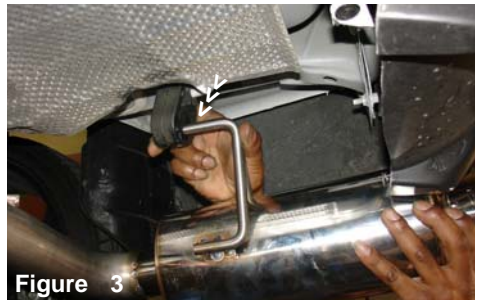


Figure 3

Raise the axle-back in place and insert the first hanger on the existing rear grommet.



Figure 4

Push the second hanger near the flange into the second grommet as shown above.



Figure 5

align the flange to the stock donut flange and use the stock spring loaded bolts and m10 nuts supplied.



Figure 6

Align the entire axle-back for best fit and tighten the nuts and bolts, keep tip away from the bumper.