



Part number SP1967
2006 Nissan Sentra 1.8L 4 cyl.

- 1- MR Tech cold air intake (CV)
- 1- **3" Injen filter** (#1011)
- 1- 2 1/2" straight hose (#3048)
- 1- 3" straight hose (#3044)
- 1- M6 vibra-mount (#6020)
- 1- M6 male/female vibra-mount (#6028)
- 2- m6 flange nuts (#6002)
- 3- fender washers (#6011)
- 1- m6 x 16mm hex bolt (#6005)
- 1- T-20 Torx bit (#6021)
- 2- Power-Bands (.312) .040 (#4003)
- 2- Power-Bands (.362) .048 (#4004)



Tools required:

- 1- 10mm socket
- 1- Ratchet
- 1- 8mm nut driver
- 1- electric die grinder
- 1- Pliers
- 1- screw driver

Note: The installation of this cold air intake does require mechanical skills. Removal of the front bumper requires loosening and removing several plastic plugs and screws that may be difficult. In addition to removing the bumper, you will also have to remove the air resonator box, battery and tray when beginning this installation.

This installation requires the bumper to be removed, grinding of the resonator opening will also be involved. Injen strongly recommends that this system be installed by a professional mechanic.

MR Technology, "The World's First Tuned Intake System!"

Optimum performance, Factory safe air/fuel ratio.

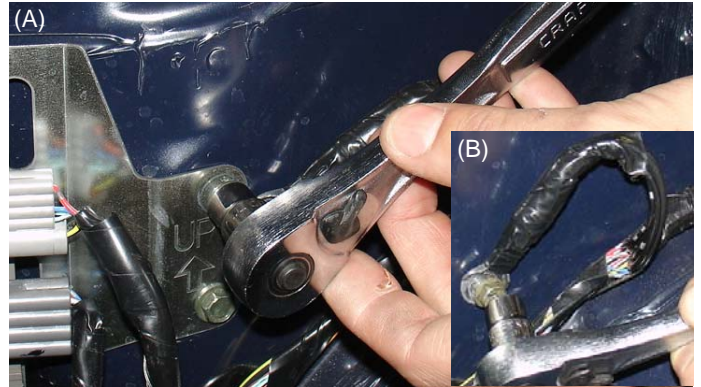


Converts into a Short Ram intake
Hydro-shield used Part# 1035

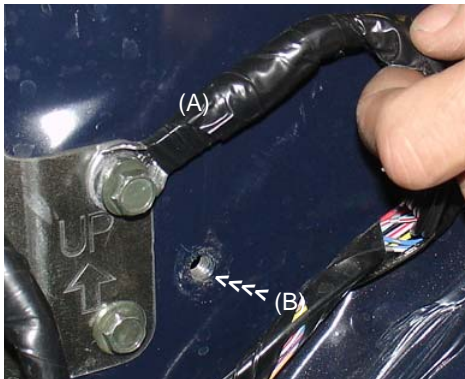




Loosen the clamp on the throttle body, remove the crankcase breather hose and remove the entire air intake box and air intake duct.



Remove the top m6 bolt from the plate that holds the harness clips in place (A). Remove the m6 bolt in order to relocate the ground wire(B). Once the bolt has been removed continue to relocate the ground wire to the harness plate (A).



The ground wire has been relocated to its new location and fastened with the stock m6 bolt (A). The vibra-mount will be located and screwed into the pre-tapped hole as shown above (B).



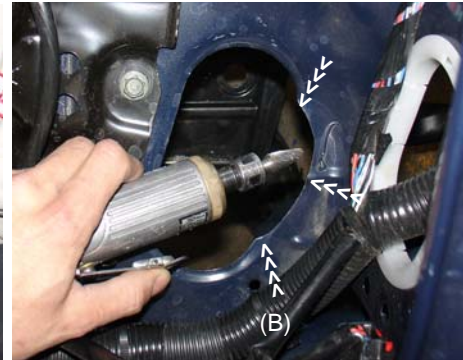
The vibra-mount has been screwed into the side wall of the strut tower mount. Turn the vibra-mount until the bottom butts up against the side wall.



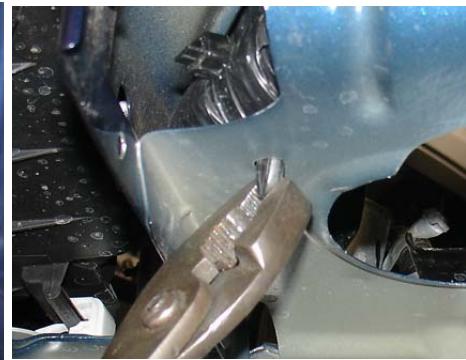
Remove any bolts from the air resonator box then continue to remove the air resonator box as shown above.



Disconnect the battery terminals from the battery, loosen the battery tie down and continue to remove the battery from the engine compartment.



Take an air powered or electric grinder and expand or grind out a section of the resonator opening. You will be removing about 3/4" from point (A) to point (B).



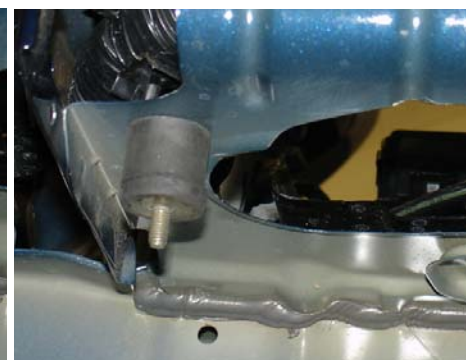
Take a pair of pliers and compress the plastic clip that holds the harness line in place. Compress and pull upward in order to remove the plastic clip.



Take the m6 x m12 bolt and washer. Insert the bolt into the hole that was occupied by the plastic clip.



The m6 x 12mm bolt is inserted and is now protruding through the sheet metal. A male/female vibra-mount is attached to the m6 12mm bolt as shown above.



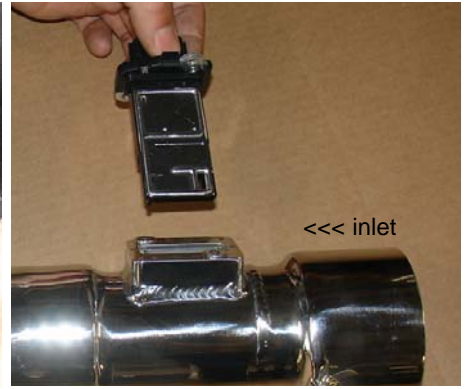
The male/female vibra-mount has been fully screwed into the 6mm bolt.



Slip the 2 1/2" straight hose over the throttle body and use two .312 power-bands as shown above. Tighten the clamp that is on the throttle body side.



Remove the two screws from the sensor pad (A) and carefully remove the air sensor from the sensor housing as shown above.



The air mass sensor is directional so the bolt pattern should match up to each other. Once direction has been determined continue to insert the sensor into the machined sensor adapter and reuse the screws.



Take the assembled air intake and press the top section into the throttle body hose as shown above. While the top section is pressed into the throttle body hose the intake bracket is aligned to the vibra-mount stud.



The air intake bracket is shown lined up with the vibra-mount stud and sitting flush on each other.



The m6 flange nut and fender washer is used to secure the intake to the vibra-mount stud. Do not over tighten the flange nut until the entire intake system has been installed and aligned.



Press the stock crankcase hose over the 5/8" intake port and use the stock clamp to secure the hose in place.



Take the harness clip and press it over the air sensor until you hear them snap in place. The snapping insures that you have good contact.



Short Ram installation: Take the filter and press it over the end of the primary intake. Once the intake is butted up against the filter stop continue to tighten the filter clamp.



The installation of the short ram intake system is now complete.



Installation of the cold air intake system: Press the 3" straight hose over the end of the primary intake. Use two .362 power-bands on the 3" hose and tighten the clamp on the intake for now.



Insert the the secondary intake into the bumper area. Pull the intake up and into the engine compartment so that it is aligned with the hose on the primary intake.



Once the secondary intake has been aligned to the primary intake continue to press the intake into the hose on the primary intake.



As the top section of the intake is pressed into the hose on the primary intake the intake bracket is lined up to the vibra-mount stud. Use the m6 flange nut and fender washer to secure the intake in place.



Once the intake has been secured to the vibra-mount stud, continue to press the filter over the end of the intake. Press filter over the end of the intake until it butts up against the filter stops then continue to tighten the filter neck clamp.



1. Upon completion of the installation, reconnect the negative battery terminal before you start the engine.
2. Align the entire intake system for the best possible fit. Once the intake has been properly fitted continue to tighten all nuts, bolts and clamps.
3. Periodically, recheck the alignment of the intake system and make sure there is proper clearance around and along the length of the intake. Failure to follow proper maintenance procedures may cause damage to the intake and will void the warranty.
4. Start the engine and listen carefully for any odd noises, rattles and/or air leaks prior to taking it for a test drive. If any problems arise go back and check the vacuum lines, hoses and clamps that maybe causing leaks or rattles and correct the problem.
5. Check the filter for excessive dirt build up. Clean or replace the filter with an original Injen filter. Congratulations! You have just completed the installation of the best intake system sold on the market. Enjoy the added power and performance of your new intake system.