



Warning: Manufactures attempting to duplicate Injen's patented process will now face legal action.

MR Technology Step down process:

- 1- Calibration Method for Air Intake Tracts for Internal Combustion Engines. Covered under Patent# 7,359,795
- 2- Calibration Device for Air Intake Tracts for Internal Combustion Engines. Published and patent pending
- 3- Calibration Method and Device for Air Intake Tracts having Air Fusion Inserts. Published and patent pending

**Part number SP1676
2013-16 Honda Accord
2.4L 4cyl.**

- 1- 1 pc. cold air intake equipped w/ MR Tech
- 1- 3" Super Nanofiber filter (#1014-BB)
- 1- 3" straight hose (#3044)
- 1- 2.75"-3.0" step hose (#3120)
- 1- 15mm hose @ 8"L (#3078)
- 3- Power Band 48 (#4004)
- 1- Power Band 40 (#4003)
- 3- m6 flange nuts (#6002)
- 3- Fender washers (#6010)
- 2- m6 vibra-mount (#6020)
- 1- 1/4" white nylon coupler (#8008)
- 1- Instruction (4 Pages)

Congratulations! You have just purchased the best engineered, dyno-proven cold air intake system available.

Please check the contents of this box immediately.

Please check the contents of this box immediately.

Note: This intake system was Dyno-tested with an Injen filter and Injen parts. The use of any other filter or part will void the warranty and CARB exemption number.

Note: The installation of this cold air intake does require mechanical skills. Removal of the front bumper requires loosening and removing several plastic plugs and screws that may be difficult. In addition to removing the bumper, you will also have to remove the air resonator box, battery and tray when beginning this installation. **Injen strongly recommends that this system be installed by a professional mechanic.**

MR Technology, "The World's First Tuned air Intake System!"

Factory safe air/fuel ratio's for Optimum performance Patent# 7,359,795
Now equipped with "Air Fusion" Patent pending

Note: The C.A.R.B Exempt sticker must be attached under the hood in a manner such that it is easily viewed by an emissions inspector.



Figure 1



Figure 2



Figure 3

Stock air box shown in this picture, disconnect battery before installation.

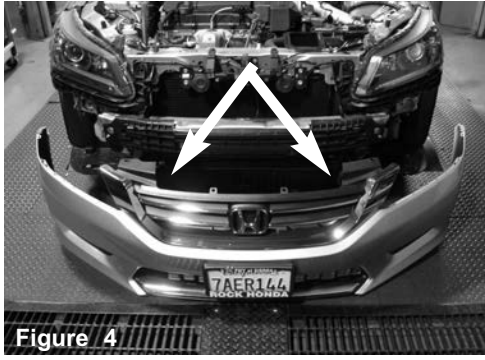


Figure 4

Front bumper cover needs to be removed from the vehicle for the factory resonator to be removed. Remove the plastic push-clips from top and bottom and remove side screws from the splash guard. Carefully pull back bumper cover. Disconnect Fog lights if equipped.



Figure 5

Disconnect the MAF sensor harness and pull the line away from the air box.

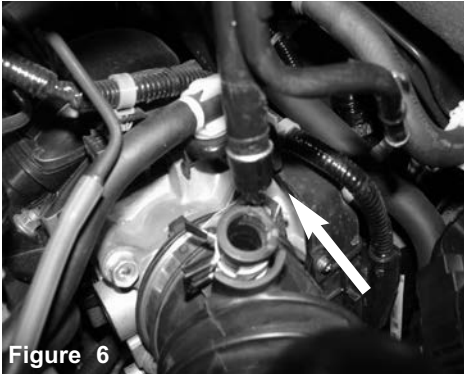


Figure 6

Pull the crank case line away from the intake tube

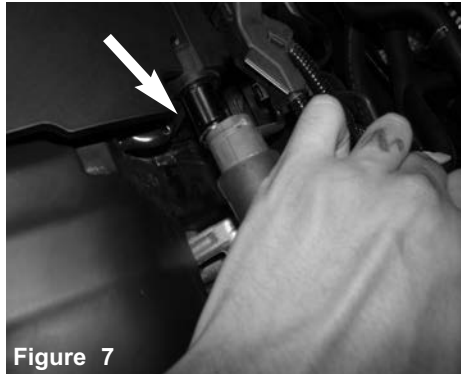


Figure 7

Pull the crank case line away from the engine fitting.

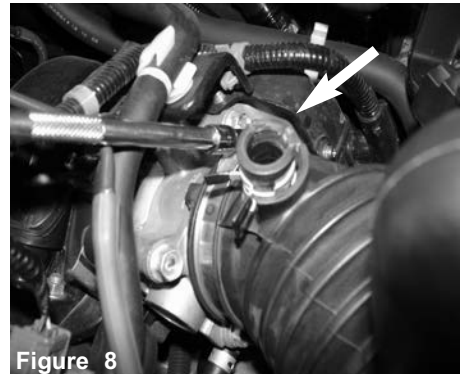


Figure 8

Loosen the clamp on the throttle body using 8mm nut driver.

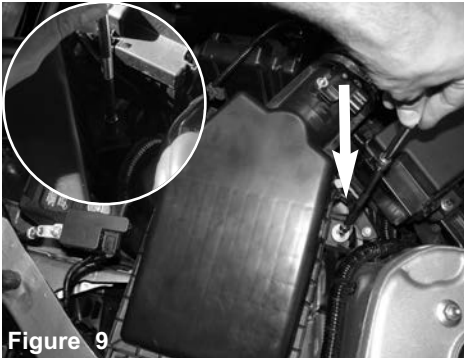


Figure 9

With 10mm socket and extension, loosen the 2 screws holding in the air box.

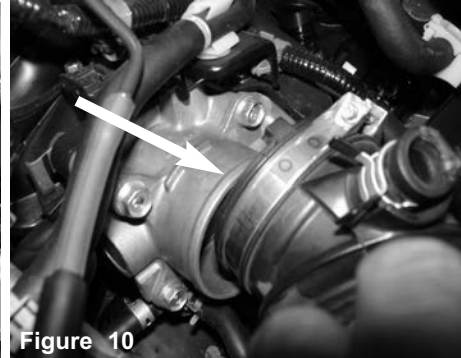


Figure 10

Pull back the intake tube from the throttle body.



Figure 11

Disconnect the harness that is attached to the base of the air box near throttle body. Now lift up and remove the air box from the vehicle.

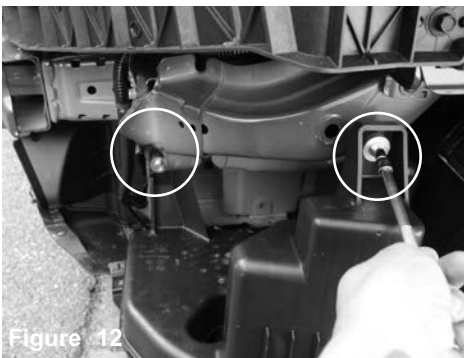


Figure 12

Loosen the 2 bolts holding in the resonator box.

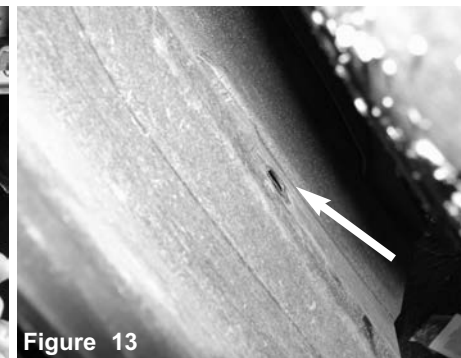


Figure 13

Locate the push clip on the splash guard connected to the resonator box and remove.



Figure 14

Remove the resonator from vehicle, this may require some force to push down and away from vehicle. Note: there is another attachment located under battery connected to the resonator, disconnect from resonator.



Figure 15

With clamps provided, install the 2-7/8" hose to the throttle body.

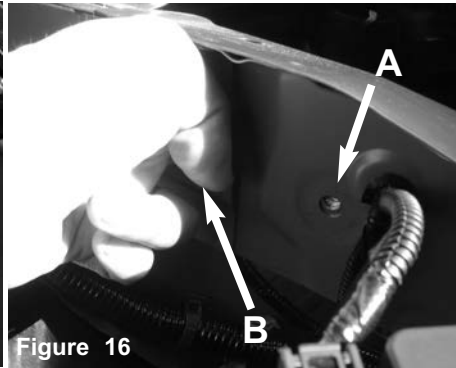


Figure 16

A) Locate the hole on frame next to battery behind headlight B) Now use larger hole to slide inside the washer and M6 nut and line up to hole(see figure 17 for photo of hole).

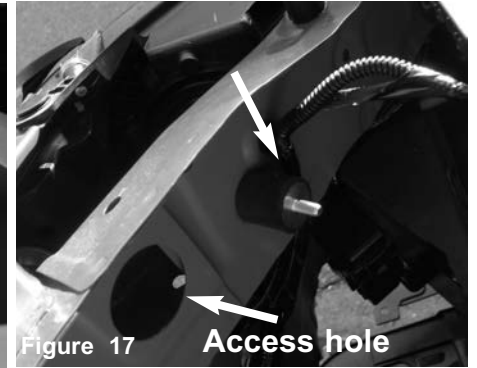


Figure 17

Access hole

Now install the provided M6 vibra mount. Secure and tighten.



Figure 18

Loosen the 2 screws holding in the MAF sensor using phillips screwdriver and remove the sensor. Save the screws for later install.

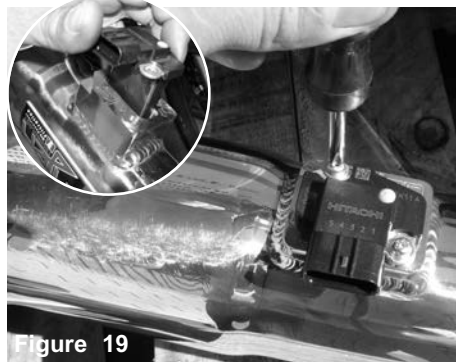


Figure 19

Now install the sensor into the intake tube, secure and tighten using factory screws from previous step.

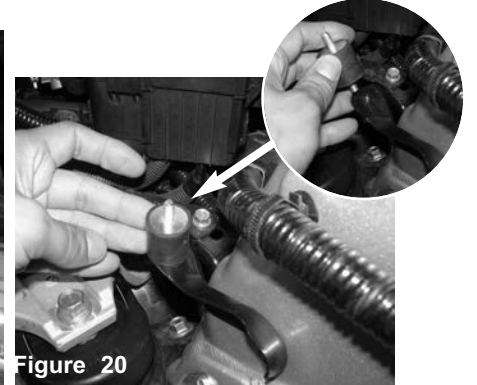


Figure 20

Now install the vibra mount to the bracket using original airbox location.

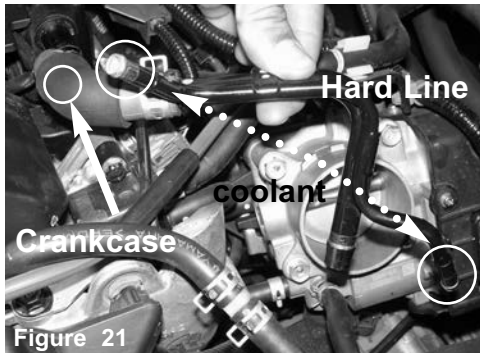


Figure 21

NOTE: Make sure vehicle is cool before performing this step. Remove the hard line/crankcase line from vehicle. Disconnect the crankcase side from the engine side. Remove both coolant hoses from the hard line.



Figure 22

Now secure the 2 coolant lines together using white nylon coupler. Secure using factory clamps.



Figure 23

Install the upper intake tube to vehicle and position the bracket to the vibramount. Secure and tighten using provided M6 nut and fender washer.

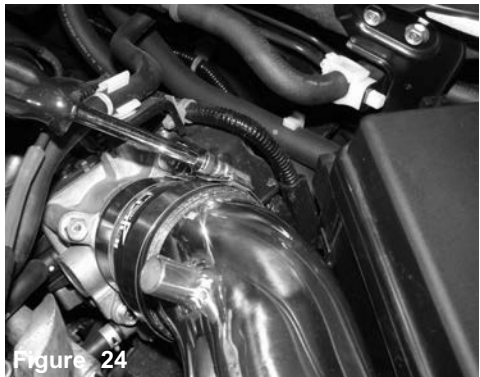


Figure 24

Tighten the clamp on throttle body using 8mm nut driver.



Figure 25

Install provided 15mm hose to the engine and intake tube fittings.



Figure 26

Connect the MAF sensor harness.

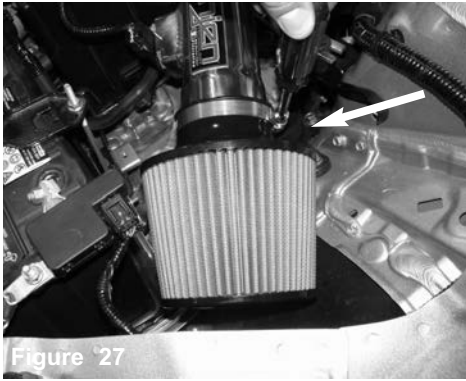


Figure 27
Install the filter to the upper intake tube and tighten using 8mm nut driver.



Figure 28
Above photo is the short ram configuration.

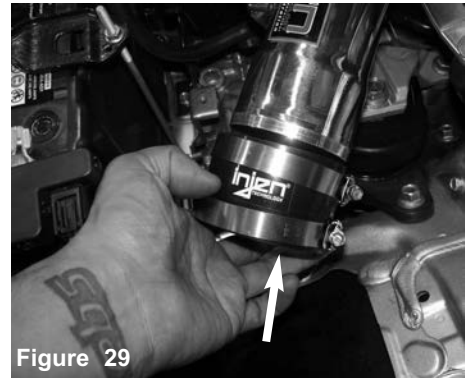


Figure 29
Remove the filter and install to the upper intake tube assembly.

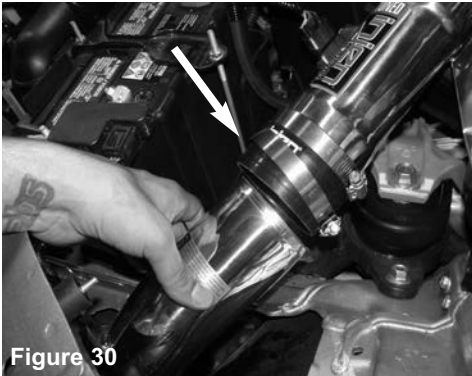


Figure 30
Now install the lower intake assembly into vehicle.

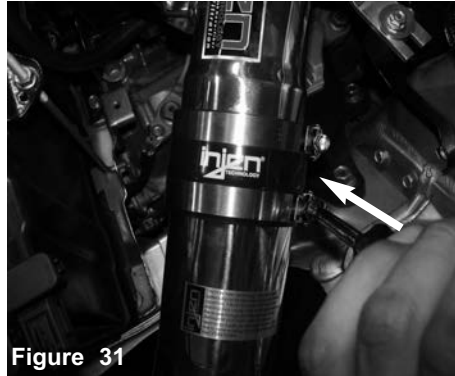


Figure 31
Secure and tighten the clamps on filter.



Figure 32
Secure the vibramount using provided m6 fender washer and nut. Install the filter to the lower intake assembly and tighten using 8mm nut driver.



Figure 33
Align the entire intake for best possible fit. Once you have aligned and made sure that the length of the intake is free from any moving parts, continue to tighten all nuts, bolts and clamps.



Figure 34
Congratulations! You have just completed the installation of this intake system. Periodically, check the alignment of the intake, normal wear and tear can cause nuts and bolts to come loose. **Note: Check clearance and adjust if needed! Failure to check the alignment and adjust the intake can cause damage that will void the warranty. Injen Technology is not responsible for any damages caused by/from improper installation.**

1. Upon completion of the installation, reconnect the negative battery terminal before you start the engine.
2. Align the entire intake system for the best possible fit. Once the intake has been properly fitted continue to tighten all nuts, bolts and clamps.
3. Periodically, recheck the alignment of the intake system and make sure there is proper clearance around and along the length of the intake. Failure to follow proper maintenance procedures may cause damage to the intake and will void the warranty.
4. Start the engine and listen carefully for any odd noises, rattles and/or air leaks prior to taking it for a test drive. If any problems arise go back and check the vacuum lines, hoses and clamps that maybe causing leaks or rattles and correct the problem.
5. Check the filter for excessive dirt build up. Clean or replace the filter with an original Injen filter.

Congratulations! You have just completed the installation of the best intake system sold on the market.

Enjoy the added power and performance of your new intake system.