

Part number SES2117
 2011 Scion tC
 2.5L 4 cyl.

1- Two piece axle back exhaust system

4- m10 hex nut (#6069)

2- 60mm oval metal gaskets (#6064)

4- m10 hex bolt (#6038)

1- 4 page instruction

Congratulations! You have just purchased the best engineered, dyno-proven exhaust system available.

Please check the contents of this box immediately.

Report any defective or missing parts to the Authorized Injen Technology dealer you purchased this product from.

Before installing any parts of this system, please read the instructions thoroughly. If you have any questions regarding installation please contact the dealer you purchased this product from.

Installation DOES require some mechanical skills. A qualified mechanic is always recommended.

*Do not attempt to install the intake system while the engine is hot. The installation may require removal of radiator fluid line that may be hot.

Injen Technology offers a limited lifetime warranty to the original purchaser against defects in materials and workmanship. Warranty claims must be handled through the dealer from which the item was purchased.

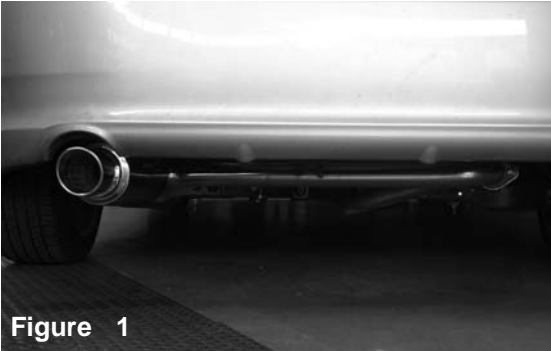


Figure 1

High flowing exhaust system.

Hardware contents in kit:



Figure 2

Two piece exhaust system.

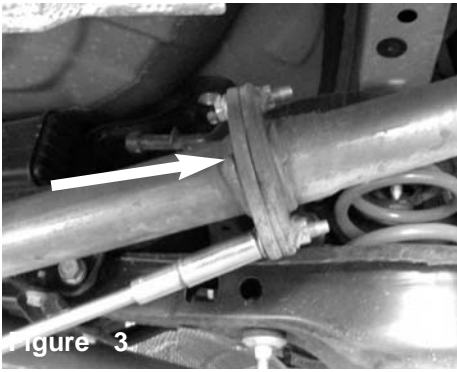


Figure 3
Loosen the 2 bolts holding in the axle back exhaust.

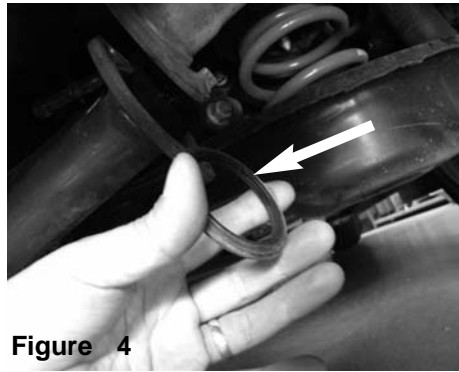


Figure 4
Remove the seal ring on the stock exhaust.

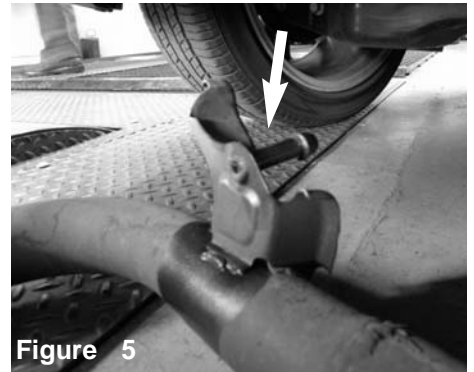


Figure 5
Pull back the rubber hanger.

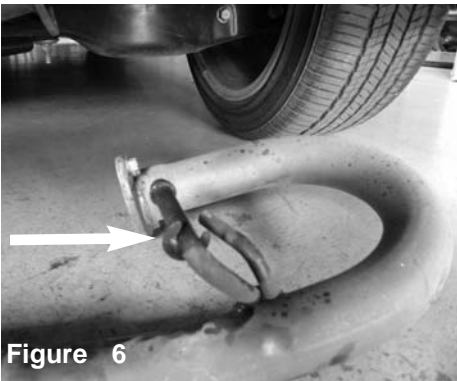


Figure 6
Loosen the 2nd hanger, and remove the exhaust.

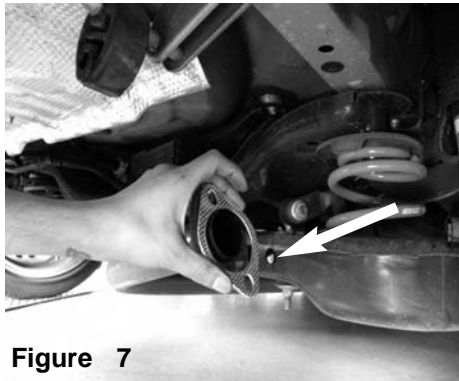


Figure 7
Install the provided gasket to the stock exhaust flange.

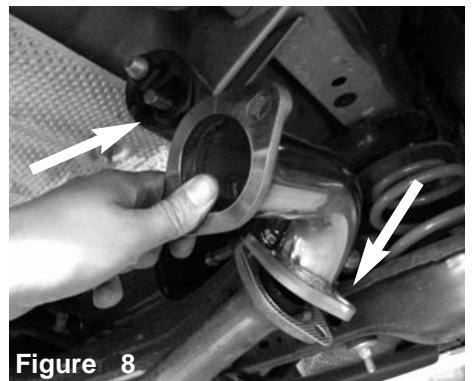


Figure 8
Install the the small 90 degree tube to the flange and position hanger to rubber hanger.

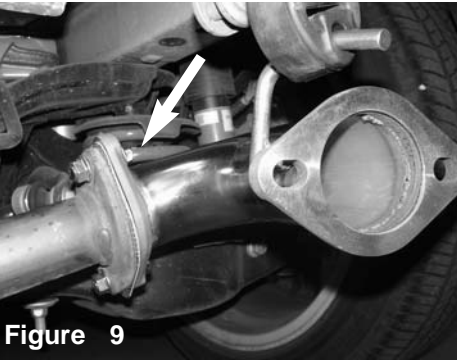


Figure 9
Install the bolts and secure, to flange. Do not tighten.



Figure 10
Install the exhaust sytem and position hanger to the rubber hanger.

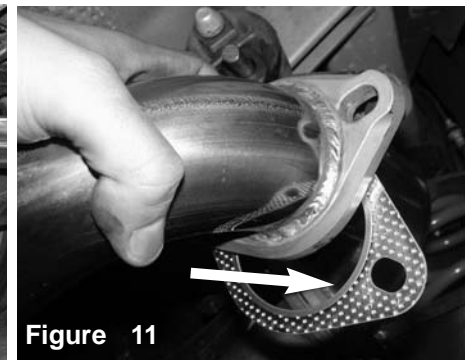


Figure 11
Attach the 2 flange's together and sandwich with the provided gasket.

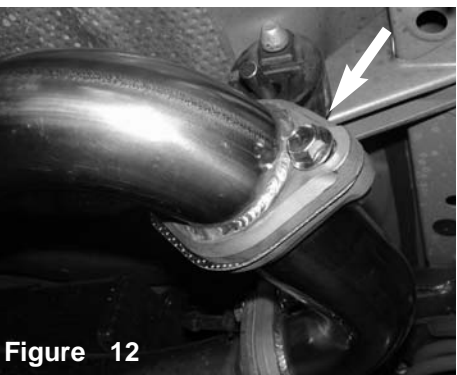


Figure 12
Secure using the 2 bolts and nuts.

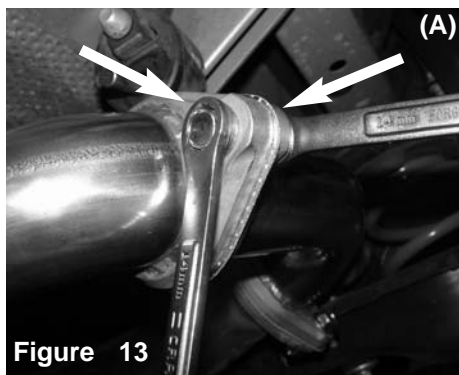


Figure 13
This next step will require a lot of positioning. Place tip high and tighten all bolts, exhaust will position naturally. Re-tighten and position if necessary.

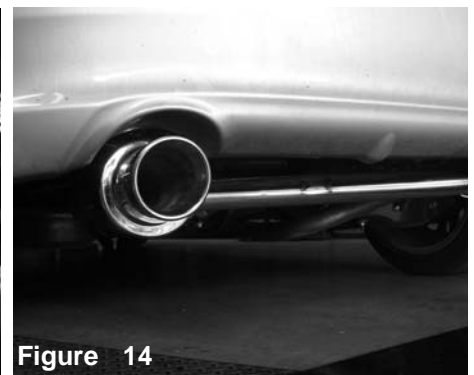


Figure 14
Your installtion is now complete. check for clearance and position for best possible fit.