



Part number RD1992
03-06 Infiniti G35 Sedan

- 1- 2 piece Injen intake system (CV)
- 1- **3 1/2" Injen filter (#1015)**
- 1- **3" Composite adapter (#14032)**
- 1- 3" Straight hose (#3044)
- 2- 3 1/8" Straight hose (#3054)
- 6- Power-Bands(.048)(.362) (#4004)
- 3- m6 Flange nuts (#6002)
- 2- Fender washers (#6011)
- 2- m6 Vibra-mounts (#6020)
- 1- 5 Page instruction

Note: A 3" filter must be used when converting your cold air intake into a short ram. (Part#1014)



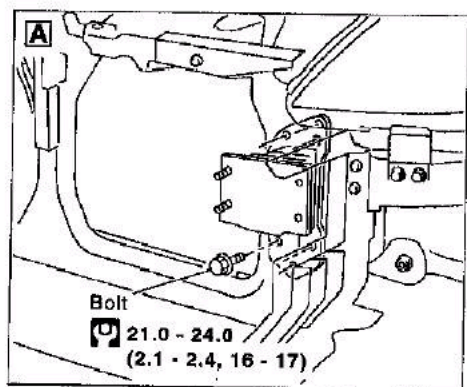
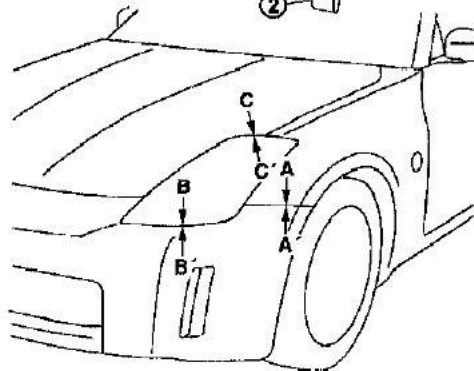
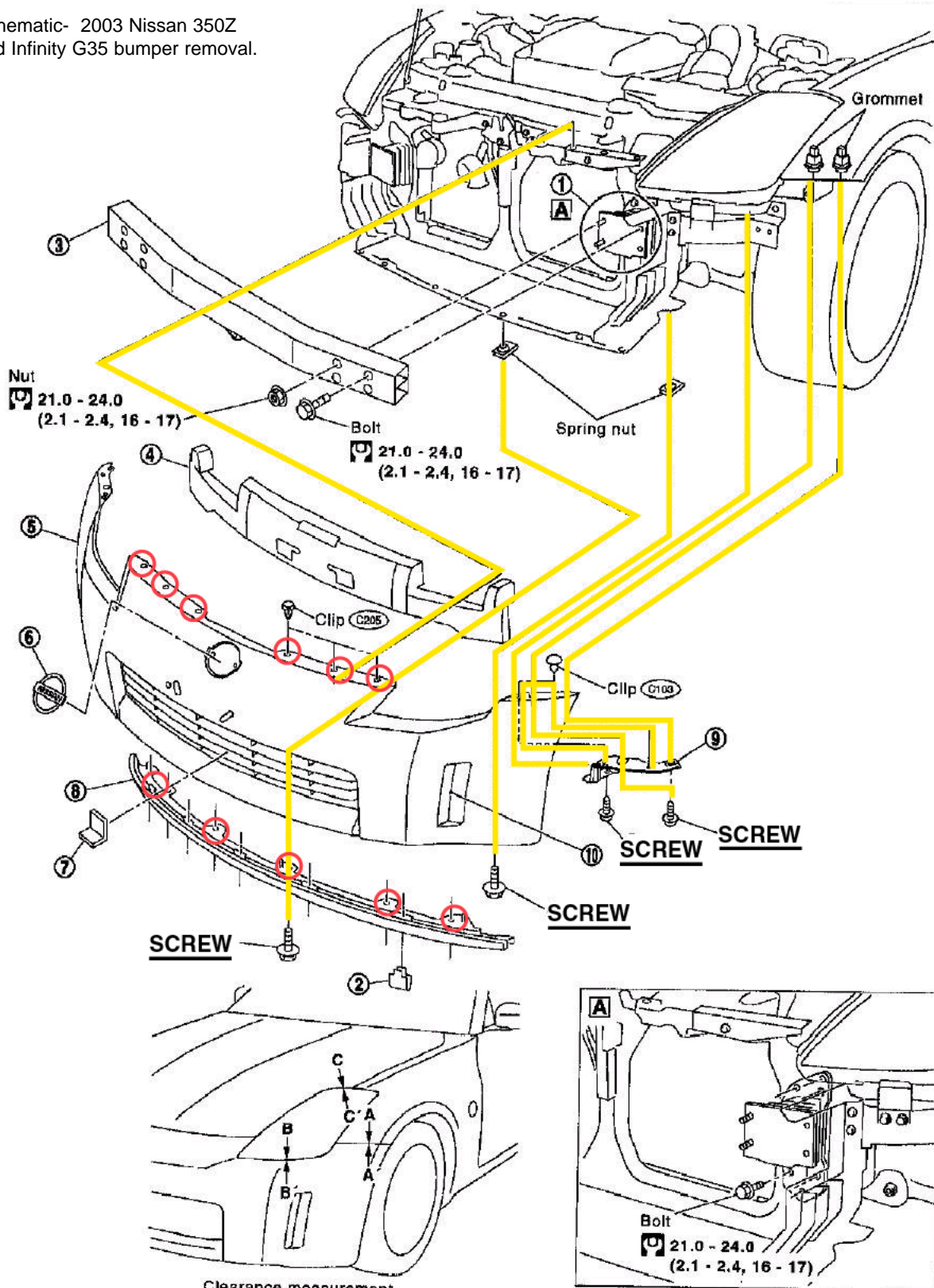
Figure 1

Now available, Hydro Shield by Injen
Part Number X-1034



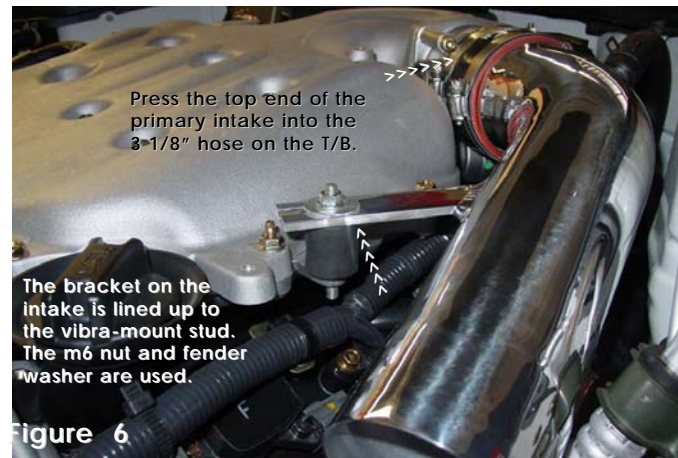
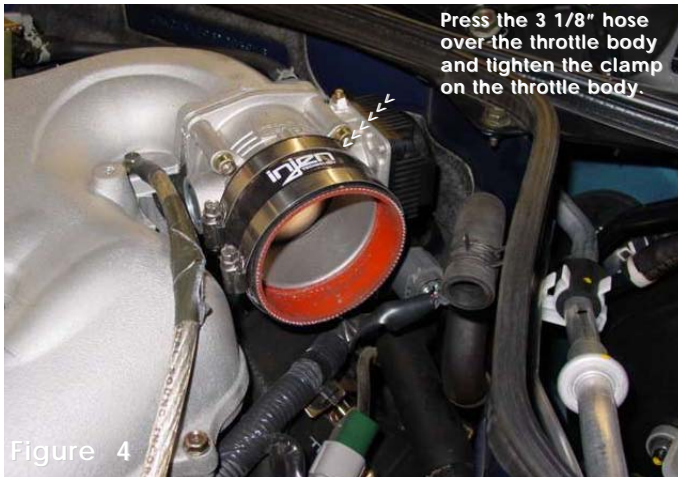
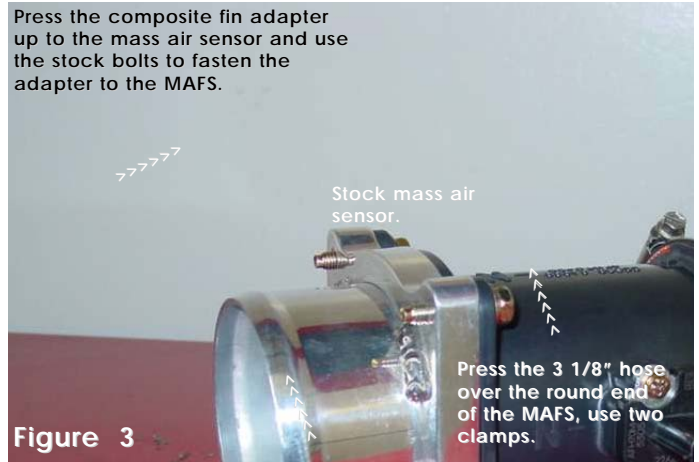
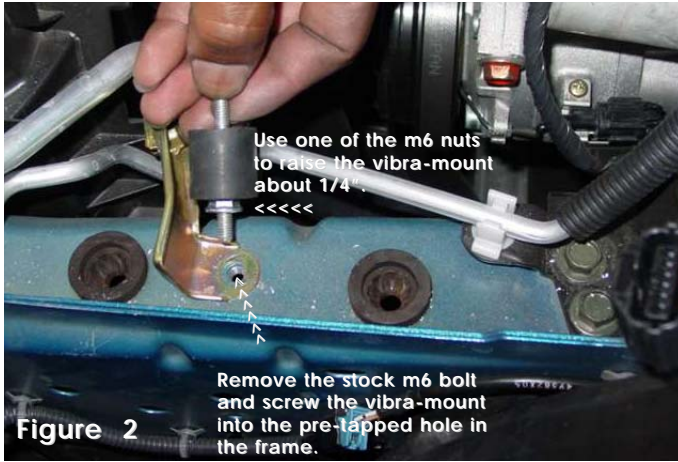
Hydro Shield Sold Separately

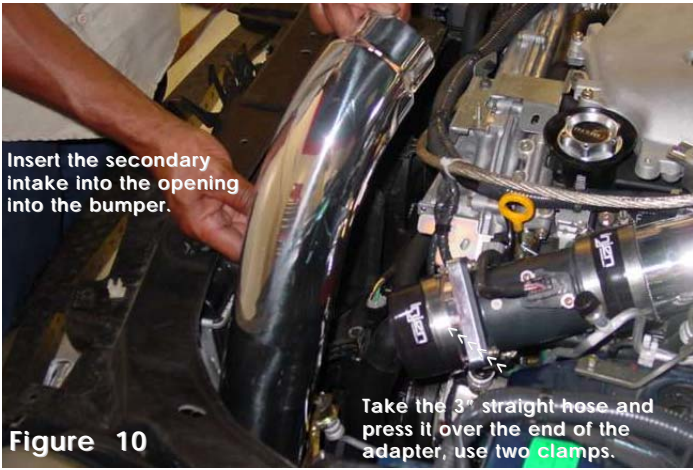
Schematic- 2003 Nissan 350Z
and Infinity G35 bumper removal.



Unit: mm (in)
 : N·m (kg-m, ft-lb)

Clearance measurement
between parts
A - A': 0 - 0.5 (0 - 0.020)
B - B': 5.9 - 8.9 (0.232 - 0.350)
C - C': 1.7 - 5.3 (0.067 - 0.209)

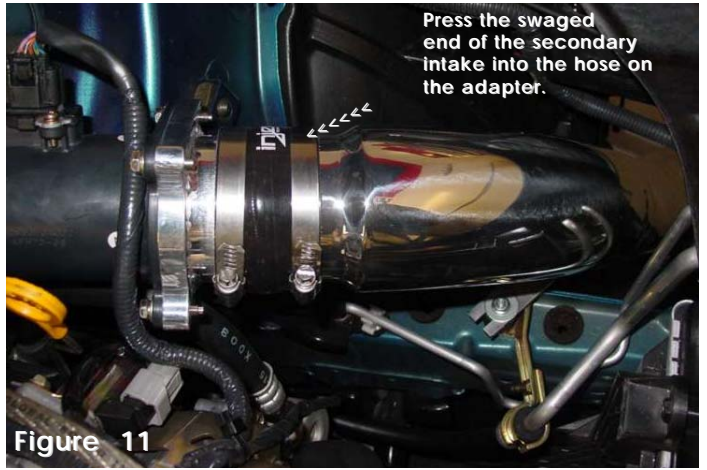




Insert the secondary intake into the opening into the bumper.

Take the 3" straight hose and press it over the end of the adapter, use two clamps.

Figure 10



Press the swaged end of the secondary intake into the hose on the adapter.

Figure 11



Line up the bracket to the vibra-mount stud and use the m6 nut and fender washer.

Figure 12



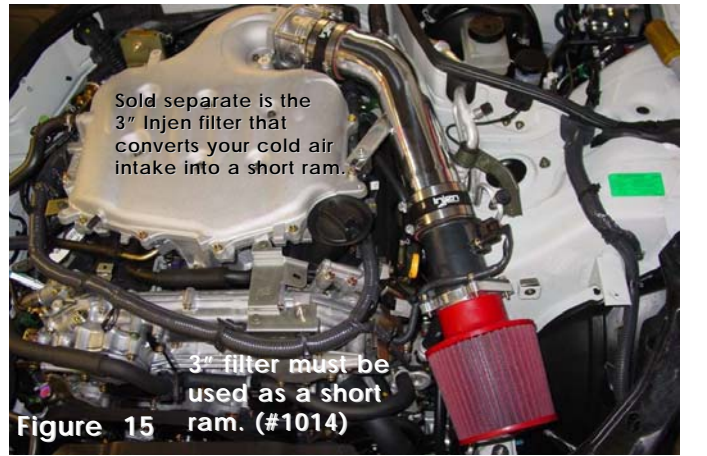
Be sure to reuse the foam insulator.

Figure 13



3 1/2" Injen filter pressed over the secondary intake.

Figure 14



Sold separate is the 3" Injen filter that converts your cold air intake into a short ram.

3" filter must be used as a short ram. (#1014)

Figure 15

Note: Disconnect the negative battery terminal before starting this installation.

1. Remove the stock air intake box and air intake duct leading to the throttle body. Disconnect the stock vacuum line by the fire wall side and remove the mass air flow sensor from the air box. This installation will also require the removal of the front bumper for proper aligning of the secondary air intake. (See diagram A)
If the car is to be put on a lift you may also remove front splash guard under the car in order to install the cold air intake instead of removing the front bumper.
2. Once the stock air intake box is removed you will see an exposed bracket holding the air conditioning hard plumbing in place. Remove the m6 bolt and position the vibra-mount in the same location. There should be an m6 nut screwed into one end of the vibra-mount stud until it bottoms out this will allow clearance over the plumbing. (See fig. 2)
3. **Assembling the mass air flow sensor:** The composite fin adapter will butt up against the mass air flow sensor and fastened with the stock m6 bolts removed from the stock air box. Press one of the 3 1/8" straight hose over the round end of the mass air flow sensor and use two clamps, Tighten the clamp on the air sensor at this point. (See fig. 3)
4. Take the remaining 3 1/8" straight hose and press it over the throttle body and use two clamps, tighten the clamp on the throttle body only. (See fig. 4)
5. Take the remaining vibra-mount and screw it into the pre-tapped hole located to the side of the intake manifold cover. (See fig. 5)
6. Take the primary intake and press the end with the nipple into the hose on the throttle body, semi-tighten the clamp on the throttle body at this point. At the same time you will want to line up the intake bracket to the vibra-mount stud and use the m6 nut and fender washer to secure the intake in place. (See fig. 6)
7. Take the assembled air flow sensor and press the hose end over the end of the primary intake. Align the intake and mass air flow sensor and semi-tighten the clamp. It is good practice to reconnect the harness clip to the mass air sensor at this point. (See fig. 7)
8. Take the 3" straight hose and press it over the round end on the adapter, again use two clamps but only tighten the clamp on the adapter at this point. (See fig. 10)
9. Take the secondary intake and insert the 3 1/2" end into the cavity between the head lamp and fender wall and into the bumper area. (See fig. 10)
10. Press the swaged end of the intake into the 3" straight hose on the adapter. Align the bracket on the intake to the vibra-mount stud and use the m6 nut and fender washer to secure the intake in place. Once the intake has been aligned semi-tighten the clamp on the 3" hose and the m6 nut on the vibra-mount. (See figs. 11, 12 and 13)
11. Take the stock vacuum line at the firewall and press it into the 5/8" nipple on the primary intake. (See fig. 8)
12. The plastic guard will remain in place to deflect large volume of air but the formed foam piece will be removed from the bumper. (See figs. 9 and 13)
13. Press the 3 1/2" filter over the end of the secondary intake and tighten the clamp on the filter. (See fig. 14) **Note: We recommend you use only Injen filters when replacing the original filter element. You can now purchase it on line at "injenonline.com"**
14. Once proper clearance has been made throughout the length of the intake, continue to tighten all nuts, bolts and clamps. (See figs. 1 and 15)
15. Place the bumper back to its original position. Follow diagram (A) and do the reverse of what you did when the bumper was removed.
16. Remove all tools and rags from the engine compartment and reconnect the negative battery terminal prior to starting the engine.
17. Congratulations! You have just completed the installation.