



Part number PF2055
 1999-04 Toyota
 Tacoma/4Runner V6 3.4L
 2004 models will not be CARB exempt and
 cannot be used on California hwy's.

1- MR Tech tuned air intake	(SR)
1- 3 1/2" Injen filter w/inv top	(#1021)
1- 2 3/4" straight hose	(#3043)
1- 19" -10mm vacuum hose	(#3076)
1- 27" -6mm vacuum hose	(#3087)
2- Power-bands .312 .040	(#4003)
1- m6 vibra-mount	(#6020)
2- m6 flange nut	(#6002)
2- fender washer	(#6011)
1- instruction	



Tools required:

1. Phillips screwdriver
2. Ratchet
3. 12mm socket
4. 10mm socket
5. 8mm nut driver

Note: The installation of this cold air intake does require mechanical skills. Removal of the front bumper requires loosening and removing several plastic plugs and screws that may be difficult. In addition to removing the bumper, you will also have to remove the air resonator box, battery and tray when beginning this installation. **Injen strongly recommends that this system be installed by a professional mechanic.**

MR Technology, "The World's First Tuned Intake System!"

Optimum performance, Factory safe air/fuel ratio.

Patent Pending



"An air intake evolution"

Prior to starting this installation, disconnect the negative battery terminal.



Disconnect the stock 6mm vacuum line connected to the small intake manifold port. This line will be replaced with the 27" 6mm vacuum hose.



Disconnect the stock 8mm breather hose connected to the air intake box port. This line will be reused and connected to the first 1/2" port nearest to the filter.



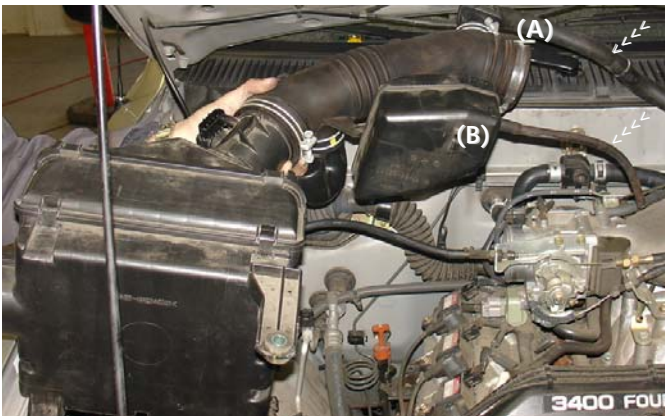
Remove the 6mm bolt by the cruise control box in order to remove the air intake box.



Remove the 6mm bolt located on the cross member. This will allow you to remove the entire air intake box.



Disconnect the harness clip connected to the air mass sensor.



Remove the entire stock air intake box and air intake duct. Disconnect the large 10mm hose by the firewall (A). The small 6mm hose connected to the intake resonator will also come out intact (B).



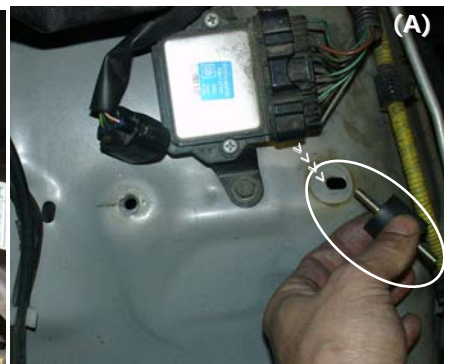
Once you have removed the stock vacuum at the intake port replace it with the 19" 10mm vacuum hose (A).



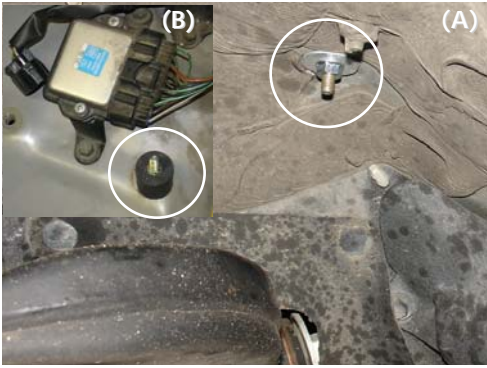
Press the 2 3/4" straight hose over the throttle body, place two .312 bands on the hose and tighten the band on the throttle body side (A).



Press the 27" 6mm vacuum hose over the small intake port as shown above. This line will connect to the 3/8" center port nearest to the throttle body.



Insert vibra-mount into the hole near the cruise control box. The hole is not tapped so a washer and m6 nut will be used underneath.



Once the vibra-mount has been inserted into the hole use the m6 flange nut and washer to hold the vibra-mount from underneath the wheel well(A). The vibra-mount should be firmly in place next to the cruise control box (B).



Unscrew the stock screws and remove the mass air flow sensor from the air intake box (A). Slowly, insert the mass air flow sensor into the machined MAF sensor flange as shown above (B).



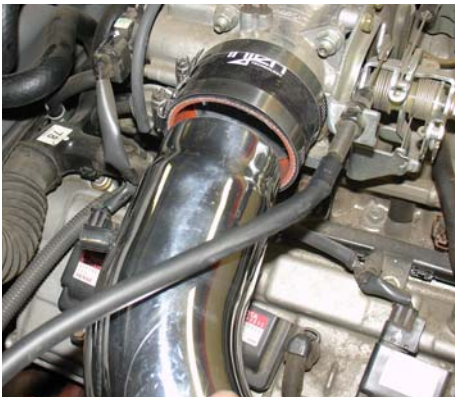
Without pinching the O-ring on the MAF sensor, press the sensor into the flange adapter and use the stock screws to firmly attach the MAF sensor.



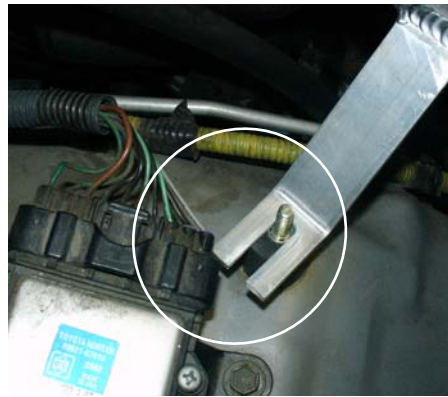
Press the 3 1/2" filter neck over the intake as shown above. Once the filter has been properly placed continue to tighten the filter neck clamp.



Lower the entire intake assembly into the engine compartment and press the top end into the 2 3/4" straight hose.



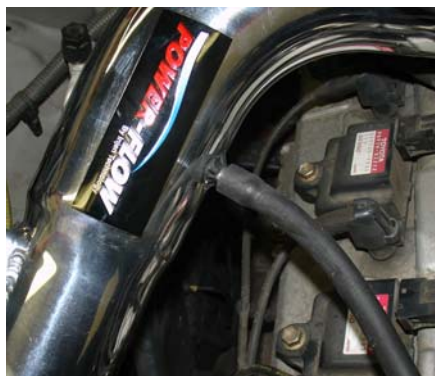
Gently, Press the top intake into the throttle body hose, while aligning the intake bracket to the vibra-mount stud.



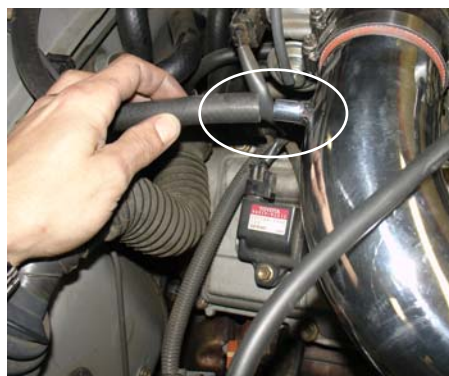
The bracket is lined up the vibra-mount stud.



The m6 flange nut and fender washer are used to secure the intake bracket to the vibra-mount stud.



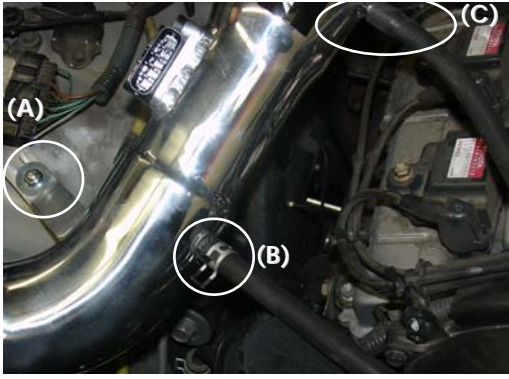
Press the 27" 6mm vacuum hose over the the 3/8" vacuum hose coming from the small intake manifold port.



Press the 19" 10mm hose coming from the crank case port over the the 1/2" intake port.



Take the stock 8mm breather hose connected at the crank case port and press it over the 1/2" intake port. Use the stock clamp to secure the hose in place.



The intake bracket is secured with the m6 nut and washer (A). The stock 8mm hose from the crank case is also secured with the clamp (B) and the 6mm Injen hose is also installed (C).



The harness clip is reconnected to the MAF sensor. Press the clip over the sensor until you here it snap in place.



Congratulations! The intake is now install and the Injen vacuum lines have been installed.

1. Upon completion of the installation, reconnect the negative battery terminal before you start the engine.
2. Align the entire intake system for the best possible fit. Once the intake has been properly fitted continue to tighten all nuts, bolts and clamps.
3. Periodically, recheck the alignment of the intake system and make sure there is proper clearance around and along the length of the intake. Failure to follow proper maintenance procedures may cause damage to the intake and will void the warranty.
4. Start the engine and listen carefully for any odd noises, rattles and/or air leaks prior to taking it for a test drive. If any problems arise go back and check the vacuum lines, hoses and clamps that maybe causing leaks or rattles and correct the problem.
5. Check the filter for excessive dirt build up. Clean or replace the filter with an original Injen filter. Congratulations! You have just completed the installation of the best intake system sold on the market. Enjoy the added power and performance of your new intake system.

Injen Research & Development

Horsepower gains may vary from car to car and state to state. On this particular day, the base run on the Element was 126.3 horsepower and 122.4 ft./lbs of torque.

