



**PRODUCT DISCLAIMER AND LIABILITY WAIVER:**

**THIS PRODUCT IS DESIGNED FOR OFF-ROAD or COMPETITION USE ONLY.**

Due to the removal of the factory air box assembly, which contains a Non-removable Hydro-Carbon Element. Any aftermarket intake system that removes the factory air box assembly are to be used for off-road use only. Please keep all OEM intake system components for future use.

- Part number PF2011**  
**2012 Toyota Tacoma**  
**2.7L 4cyl. NOT CARB LEGAL**
- 1- MR Tech Power-flow Intake system
  - 1- Filter 3 web/nano fiber dry filter (#1014)
  - 1- 2-3/4 straight hose (#3043)
  - 1- Heat shield HS5000 (#11011)
  - 3- Composite clamps (#4010)
  - 3- 5/16 Bolts(heat shield) (#6019)
  - 1- 9 long- 4mm hose (#3104)
  - 2- Power-Band (.040) (#4003)
  - 1- 8mm male Vibra- mount (#6062)
  - 1- 8mm flange nut (#6017)
  - 1- small washer (#6011)
  - 2- 4mm button head screw (#6047)
  - 1- 5 page instruction
- Use only Injen replacement parts**

**Congratulations! You have just purchased the best engineered, dyno-proven Power-Flow air intake system available.**

**Please check the contents of this box immediately.**

Report any defective or missing parts to the Authorized Injen Technology dealer you purchased this product from. Before installing any parts of this system, please read the instructions thoroughly. If you have any questions regarding installation please contact the dealer you purchased this product from. Installation DOES require some mechanical skills. A qualified mechanic is always recommended.

\*Do not attempt to install the intake system while the engine is hot. The installation may require removal of radiator fluid line that may be hot.

Injen Technology offers a limited lifetime warranty to the original purchaser against defects in materials and workmanship. Warranty claims must be handled through the dealer from which the item was purchased.

**Please check the contents of this box immediately.**

**Note: This intake system was Dyno-tested with an Injen filter and Injen parts. The use of any other filter or part will void the warranty and CARB exemption number.**



Note: The installation of this cold air intake does require mechanical skills. Removal of the front bumper requires loosening and removing several plastic plugs and screws that may be difficult. It is recommended that this system be installed by a professional mechanic. Be sure to disconnect the negative terminal before proceeding.

**Congratulations! You have just purchased the worlds first tuned intake system.**

**MR Technology, Leading the way!** Patent pending

**POWER-FLOW: An air intake evolution**

**Power-Flow contents:**



Figure 1





Figure 2  
Complete stock intake shown.



Figure 3  
Disconnect the MAF sensor harness. Pull all lines away from the stock air box system.



Figure 4  
Pull back the vacuum line from the actuator. Leave connected to box so you will not lose this piece.



Figure 5  
With 10mm wrench, loosen the 2 screws holding in the vacuum sensor. **Note : this is not a part of the intake system nor will be used with Injen set up.**



Figure 6  
Remove crank case line from stock intake system.



Figure 7  
With 10mm socket and ratchet, loosen the 3 screws holding in the upper part of the factory air box.

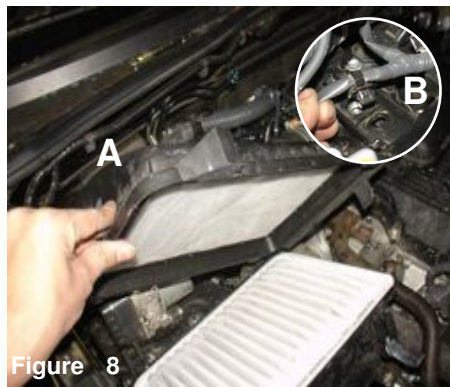


Figure 8  
A) Un-clip air box and lift up the whole stock intake sytem out of vehicle. B) Carefully remove lines attached.



Figure 9  
Complete upper stock intake system out of vehicle.



Figure 10  
Loosen the 3 bolts holding in the bottom half of the air box. Remove the bottom half of the air box.



Figure 11  
From step 5, place the vacuum sensor to the factory mounting point from step 7 closes to the firewall.

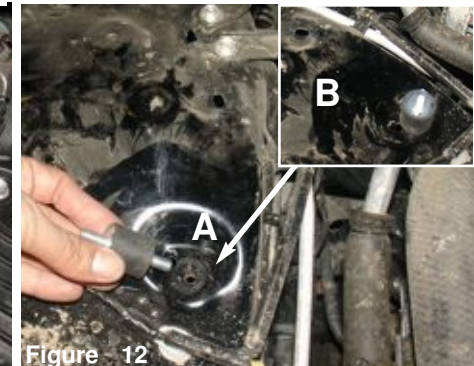


Figure 12  
A) Install the m8 vibra mount to the B) Remove screw.

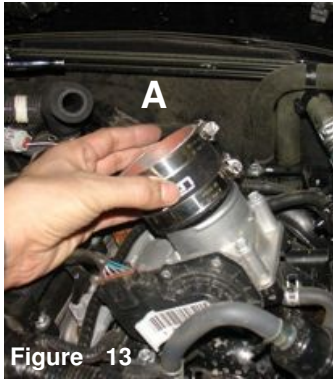


Figure 13

A) Install the straight hose with clamps provided to the throttle body.  
 B) Tighten the clamp on the throttle body only using 8mm nut driver.

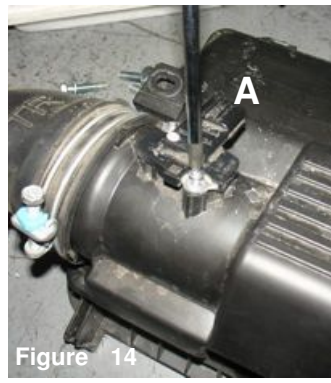
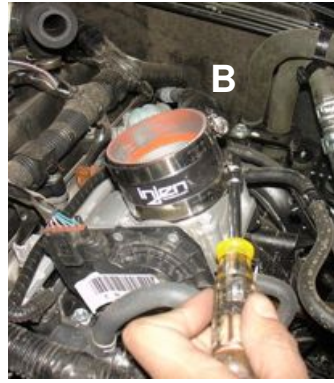


Figure 14

A) Loosen the 2 screws holding in MAF sensor using phillips screw driver.  
 B) Remove MAF sensor from air box.

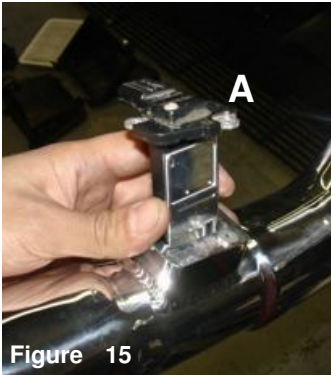


Figure 15

A) Install MAF sensor to new intake tube.  
 B) Secure MAF sensor using M4 button head screws tighten using 2.5mm allen key.

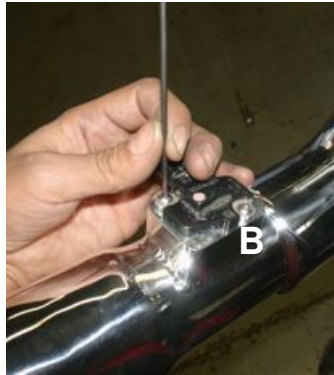


Figure 16

Install the intake into the vehicle and position.

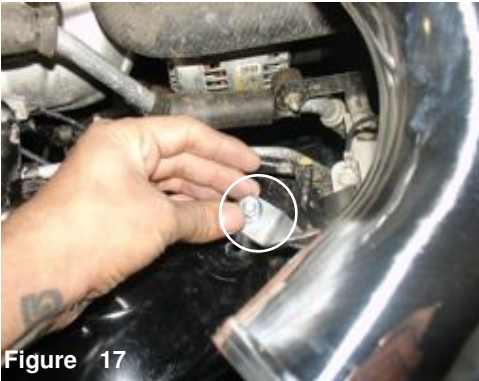


Figure 17

Secure the bracket to the vibra mount using fender washer and m6 nut.



Figure 18

Position for the best fit and tighten using 8mm nut driver.



Figure 19

Tighten the nut using 13mm socket and ratchet. Re-connect MAF sensor

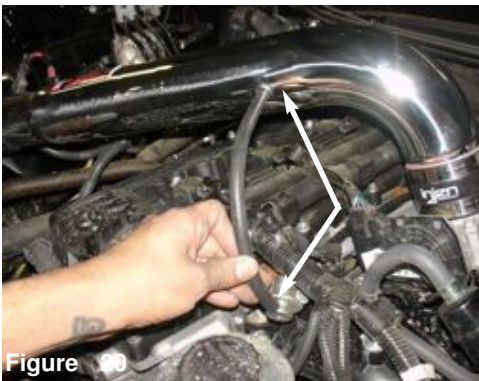


Figure 20

Now with provided 4mm hose, install and secure to the fitting and to the vacuum valve.



Figure 21

Now secure the crank case line to the fitting to the intake tube.

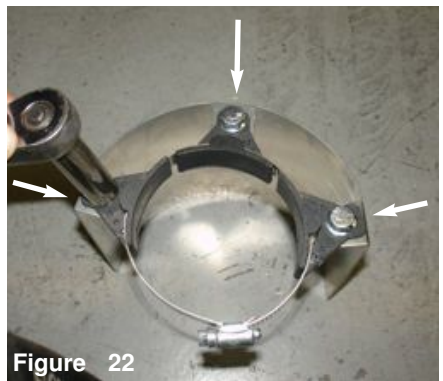


Figure 22

Now attach the filter clamps to the heat shield. Secure using the 3 5/16 bolts. Place clamp between the filter clamps.



**Figure 24**

Slide the filter so the clamps are secured on the neck.



**Figure 25**

Install the filter assembly into the vehicle and position to the intake tube.



**Figure 26**

Position for the best fit, make sure there is clearance and the shield is not touching anything. Tighten using 8mm nut driver.



**Figure 30**

Check and tighten all components and clamps if needed. Re-connect battery terminals. Make sure any adjustments need to be made.



**Figure 31**

Congratulations! You have just completed the installation of this intake system. Periodically, we recommend that you check the fitment of the intake for any shifting of the intake that may cause rattling or rubbing.

1. Upon completion of the installation, reconnect the negative battery terminal before you start the engine.
2. Align the entire intake system for the best possible fit. Once the intake has been properly fitted continue to tighten all nuts, bolts and clamps.
3. Periodically, recheck the alignment of the intake system and make sure there is proper clearance around and along the length of the intake. Failure to follow proper maintenance procedures may cause damage to the intake and will void the warranty.
4. Start the engine and listen carefully for any odd noises, rattles and/or air leaks prior to taking it for a test drive. If any problems arise go back and check the vacuum lines, hoses and clamps that maybe causing leaks or rattles and correct the problem.
5. Check the filter for excessive dirt build up. Clean or replace the filter with an original Injen filter. Congratulations! You have just completed the installation of the best intake system sold on the market. Enjoy the added power and performance of your new intake system.