



**Part number PF1994  
2003-07 Nissan Murano  
3.5L V6 All**

- |                           |                |
|---------------------------|----------------|
| 1- 2 pc cold air intake   |                |
| <b>1- 3" Injen filter</b> | <b>(#1014)</b> |
| 1- 3" straight hose       | (#3044)        |
| 1- 3 1/8" straight hose   | (#3054)        |
| 1- 16" 15mm vac. line     | (#3077)        |
| 4- Power-Band .048(.362)  | (#4004)        |
| 3- M6 flange nuts         | (#6002)        |
| 2- Fender washers         | (#6010)        |
| 2- M6 Vibra-mounts        | (#6020)        |
| 1- instruction (4 pages)  |                |



Note: The installation of this cold air intake does require mechanical skills. Removal of the front bumper requires loosening and removing several plastic plugs and screws that may be difficult. It is recommended that this system be installed by a professional mechanic. Be sure to disconnect the negative terminal before proceeding.

**Congratulations! You have just purchased the worlds first tuned intake system.**

**MR Technology, Leading the way!**





Fig. R1

## OEM Intake Removal

- 1) Loosen 4 bolts to remove the engine cover (Fig.R1)
- 2) Loosen 3 bolts to remove front air scoop (Fig.R2, A)
- 3) Loosen hose clamp on throttle body (Fig. R2, B)
- 4) Remove hose running from the crankcase (Fig. R2, C)
- 5) Un-plug Mass Air Flow Sensor (Fig. R2, D)
- 6) Remove Bolt near the driver side fender connecting the air box to the chassis (Fig. R2, E)
- 7) The Intake and upper air box can now be removed in one piece.
- 8) The lower air box can then be removed by removing the two bolts in the fender well. (Fig. R2, F)

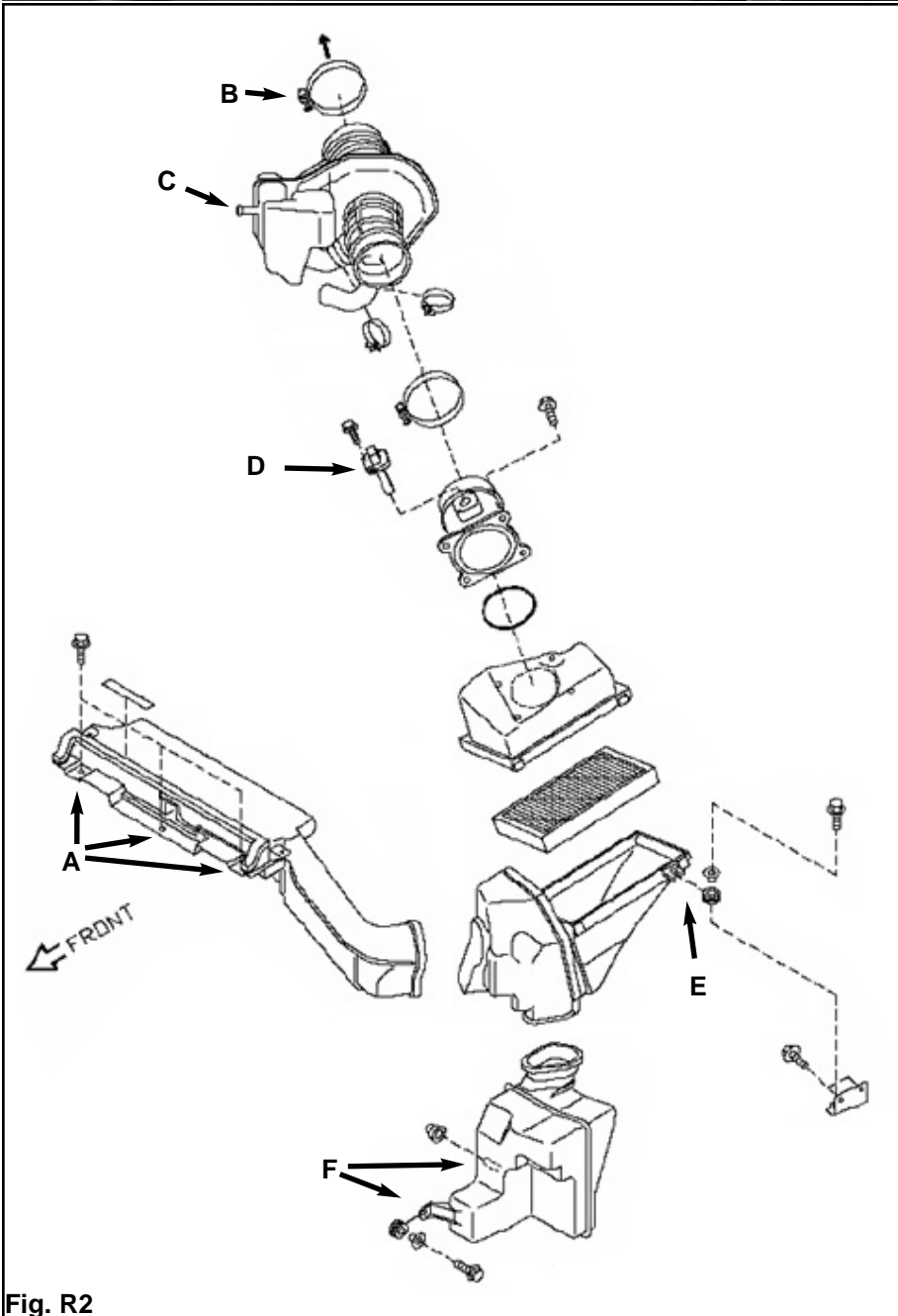


Fig. R2



**Figure 2**

Press the 3/8" straight hose over the throttle body and use two clamps, tighten the clamp on the throttle body at this point (A).



**Figure 3**

Take the primary intake and press the swaged end into the hose on the throttle body (A). Semi-tighten the clamp on the intake at this time.



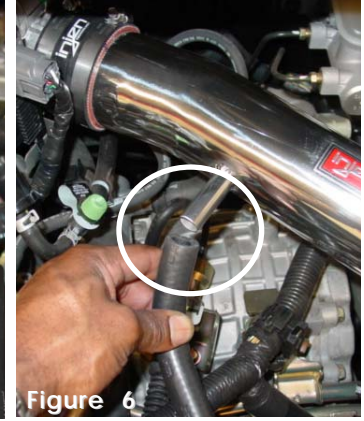
**Figure 4**

In order to prevent hydro-locking on rainy days, we strongly recommend you place the filter on the primary end of the intake. The cold air intake can be converted into a shortram whenever necessary for a little peace of mind.



**Figure 5**

Press one end of the 16"-15mm breather hose over the port located on crankcase.



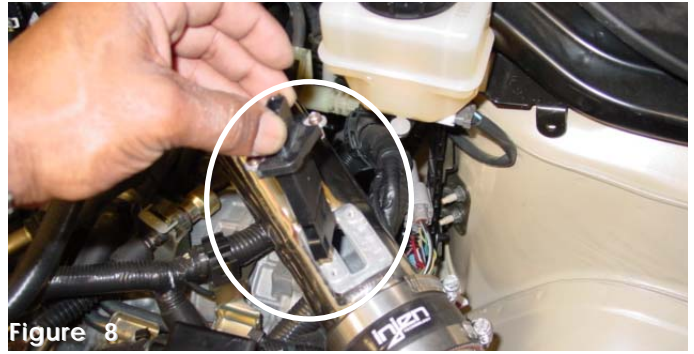
**Figure 6**

Press the remaining end on the breather over the long port on the intake.



**Figure 7**

Installation of the secondary intake: Press the remaining 3" straight hose over the end of the primary intake and use two clamps, tighten the clamp on the intake side.



**Figure 8**

Remove the stock mass air flow sensor from the stock intake box and press it into the machined adapter located on the intake.



**Figure 9**

Press the harness clip over the mass air flow sensor until you hear it snap in place.



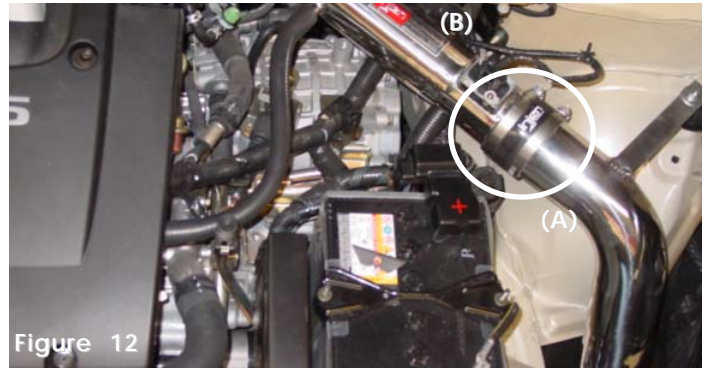
**Figure 10**

Installation of the vibra-mount: Screw the m6 vibra-mount into the brace located on the driver side fender well. Screw the vibra-mount in until it bottoms out.



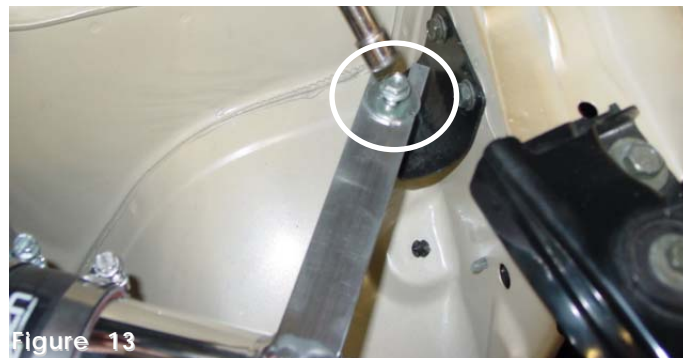
**Figure 11**

Take the secondary intake and insert it into the resonator opening. Begin to align the secondary intake to the primary intake.



**Figure 12**

Press the top end of the secondary intake (A) into the hose located on the primary intake side (B)



**Figure 13**

Line up the bracket on the intake to the vibra-mount stud. Use the m6 flange nut and fender washer to hold the entire intake in place.



**Figure 14**

Press the filter over the end of the secondary intake and tighten the clamp located on the filter neck.



**Figure 15**

Here is another view of the cold air intake being converted into a shortram.



**Figure 16**

Top shot of the cold air intake installed.

1. Once the installation is complete, reconnect the negative battery terminal before you start the engine.
2. Align the entire intake system for the best possible fit. Once the intake has been properly fitted continue to tighten all nuts, bolts and clamps.
3. Periodically, recheck the alignment of the intake system and make sure there is proper clearance around and along the length of the intake. Failure to follow proper maintenance procedures may cause damage to the intake and will void the warranty.
4. Start the engine and listen carefully for any odd noises, rattles and/or air leaks prior to taking it for a test drive. If any problems arise go back and check the vacuum lines, hoses and clamps that maybe causing leaks or rattles and correct the problem.
5. Check the filter for excessive dirt build up. Clean or replace the filter with an original Injen filter. Congratulations! You have just completed the installation of the best intake system sold on the market.
6. Enjoy the added power and performance of your new intake system.