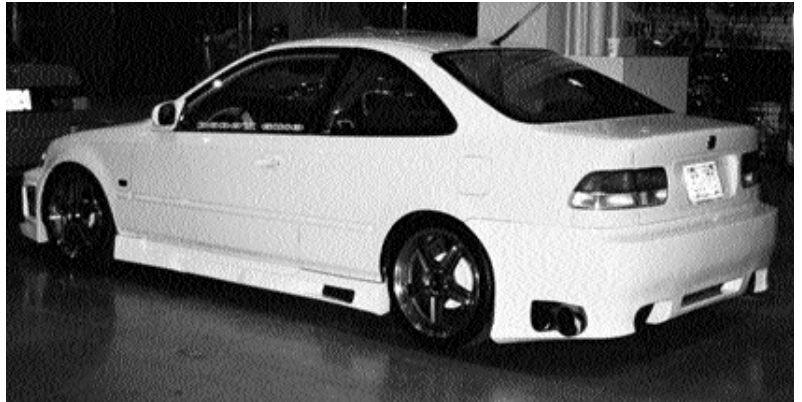


# injen



**Part Number IS1550  
1996-98 Honda Civic Ex, Hx**

Contents Included:

- 1- Intake system (SR)
- 1- **3" Injen filter (#1014)**
- 1- 2.5"X3" Step hose (#3009)
- 1- 10" 10mm Vacuum hose (#3220)
- 1- Temp sensor grommet (#6014)
- 1- Power-Band (.040)(.312) (#4003)
- 1- Power-Band (.048)(.362) (#4004)
- 1- m6 Flange nut (#6002)
- 1- Fender washer (#6010)
- 1- m6 Vibra-mount (#6020)
- 1- 3 Page instruction

**Congratulations! You have just purchased the best engineered, dyno-proven, intake system available.**

Please check the contents of this box immediately.

Report any defective or missing parts to the Authorized Injen Technology dealer you purchased this product from.

Before Installing any parts of this system, please read the instructions thoroughly. If you have any questions regarding installation please contact the dealer you purchased this product from.

Installation DOES require some mechanical skills. A qualified mechanic is always recommended.

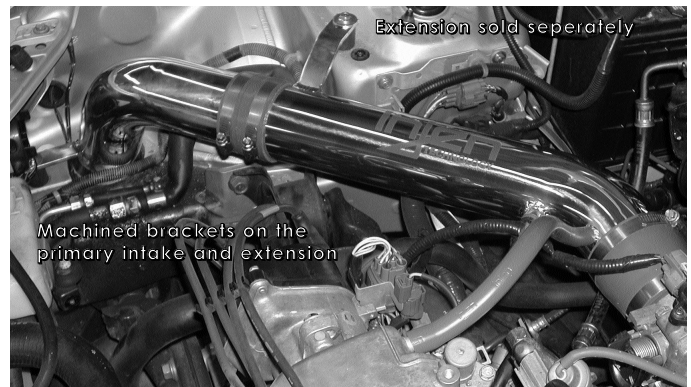
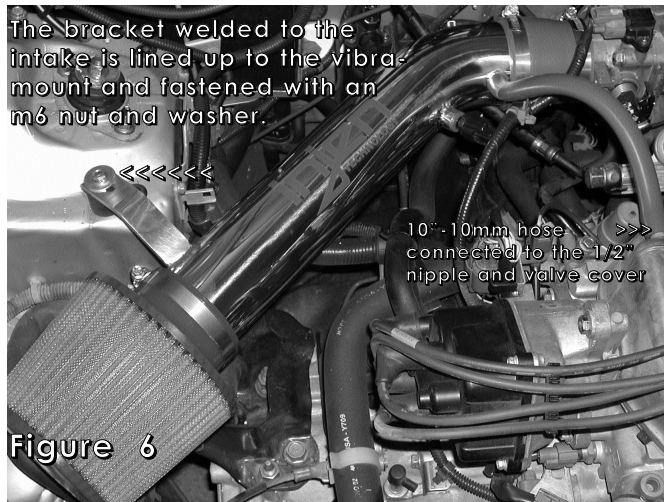
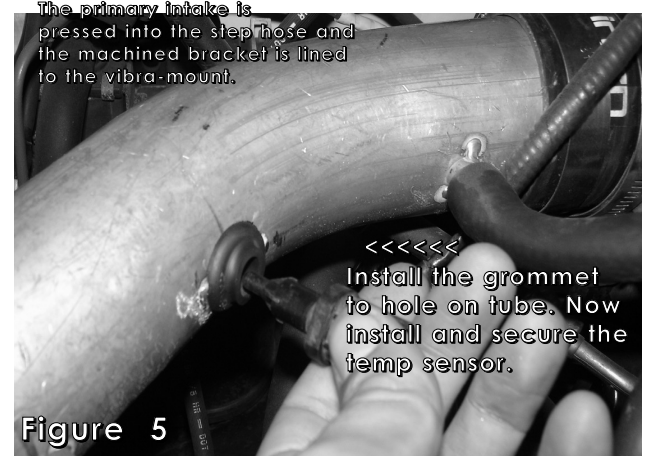
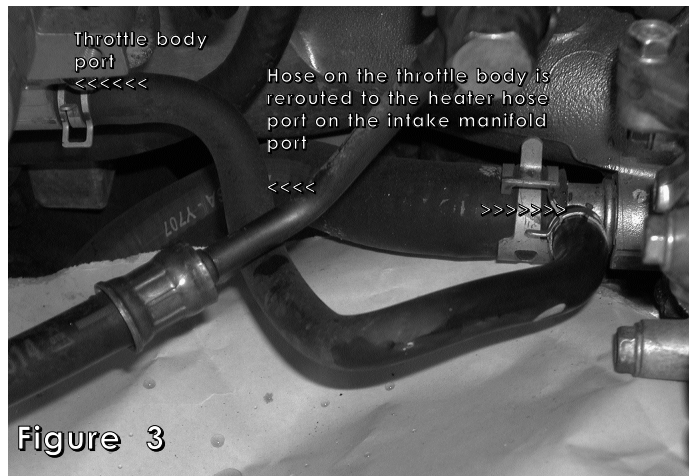
\*Do not attempt to install the intake system while the engine is hot.

The installation may require removal of radiator fluid line that may be hot.

Injen Technology offers a limited lifetime warranty to the original purchaser against defects in materials and workmanship. Warranty claims must be handled through the dealer from which the item was purchased.



Figure 1



**Note: Disconnect the battery terminals before starting this installation.**

1. Remove the air intake box and the air intake duct leading to the throttle body. Remove the air temperature sensor from the box and vacuum lines.
2. Place the 2 1/2" side of the step hose onto the throttle body and use two clamps. Tighten the clamp on the throttle body at this point. See fig. 4

**Warning! The car must be completely cold before removing any lines.**

3. Remove the PCV pipe and heater hose line on the intake manifold and reroute the stock bypass hose on the throttle body to the heater hose port on the intake manifold. See figs. 2 and 3
4. Screw the vibra-mount on the strut tower top as seen in figure 4
5. Install the grommet to the hole on intake tube. See fig. 5
6. Press the nipple end of the intake into the step hose on the throttle body and align the machined bracket on the intake to the vibra-mount stud use the m6 nut and washer. See fig. 6
7. Take the 3" Injen filter and place it over the end of the intake and tighten the clamp on the filter. See fig. 6
8. Install and secure the temperature sensor into the grommet. See fig. 5
9. Press one end of the 10"-10mm breather hose onto the valve cover port. The other end will go onto the 1/2" nipple of the intake. See figs. 1 and 6
10. Align the entire intake for best fit and clearance then continue to tighten all nuts, bolts and clamps. See fig. 1
11. Again, Check for clearance on the intake and reconnect the battery terminals.
12. Remove all tools and rags from the engine compartment before starting the engine. Congratulations! you have just completed this installation.